

車載用ディスクリート・パワーIC

各種ECUの小型、大電流、高放熱対応に貢献



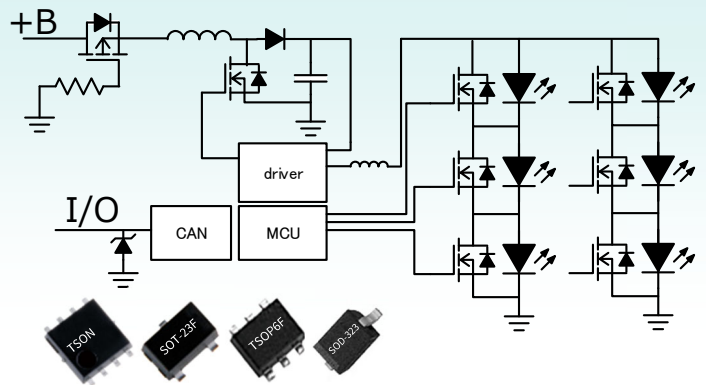
くるまの様々なニーズに対応した幅広いラインアップを用意しています。
微細プロセスとパッケージ技術でECUの小型化に貢献します。

POINT 1

小型

LEDヘッドライトECU用Kit (MOSFET、TVS diode)

- **MOSFET**
小型、且つ高放熱を実現。更に低オン抵抗による自己発熱を抑制
- **TVS diode**
システムの信頼性を向上

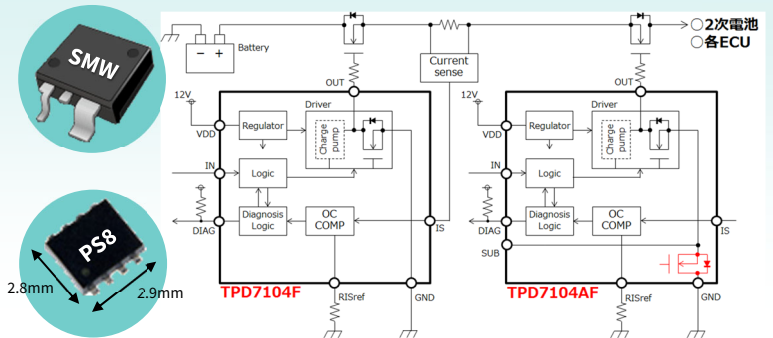


POINT 2

大電流

半導体リレー用Kit (1ch gate driver IC + MOSFET)

- **Gate driver**
外付部品無でのゲート駆動可能
部品点数削減に貢献
- **MOSFET**
業界トップクラスの超低抵抗

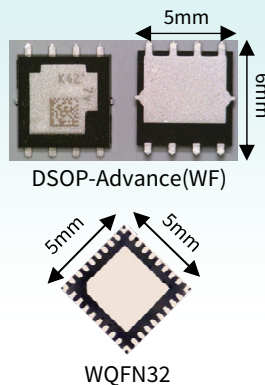


POINT 3

高放熱

ブラシレスモータ制御用Kit (B6-bridge driver IC + MOSFET)

- **B6-bridge driver IC**
小型パッケージ(5x5mm)
保護機能内蔵(短絡、天絡、地絡)
- **MOSFET**
両面放熱で高放熱を実現



評価ボードを準備

●ご連絡先

東芝デバイス&ストレージ株式会社
ディスクリート応用技術センター車載・産業応用技術部

Tel:044-549-8375 <https://toshiba.semicon-storage.com/jp/contact.html>

製品関連情報はこちら



Automotive Discrete - Power IC

Small size, High current, High heat dissipation

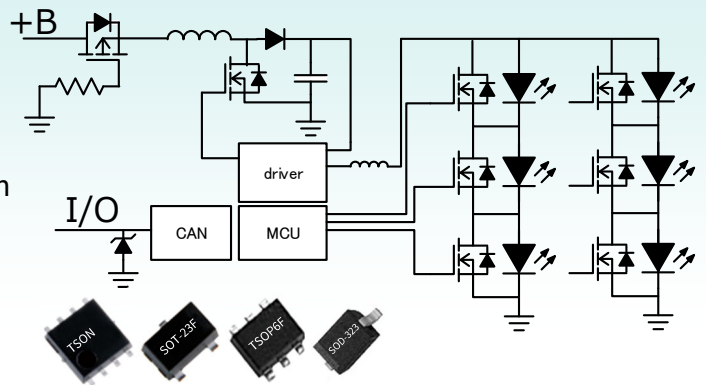


A wide range of power discrete and ICs are lined up to support various needs in automotive applications. Advance wafer process and package technology contribute to the miniaturization of ECU

POINT 1

Kit for LED head light ECU

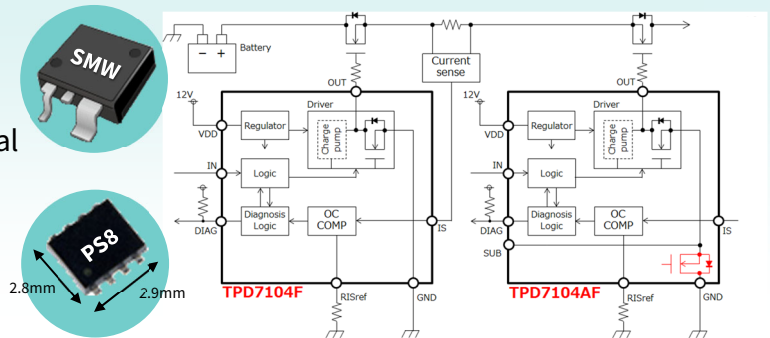
- **MOSFET**
Compact and high heat dissipation. Furthermore, self heat generation suppression by low $R_{ds(ON)}$.
- **TVS diode**
Improving reliability of systems



POINT 2

Kit for semiconductor relay

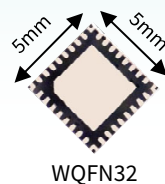
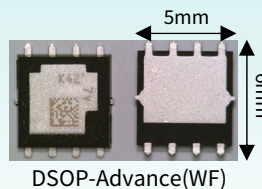
- **1ch gate driver**
A gate driver does not need any external components to drive a MOSFET.
- **MOSFET**
Top-class ultra low $R_{ds(ON)}$



POINT 3

Kit for Brushless motor application

- **B6-bridge driver IC**
Small package (5x5mm)
Various protection feature built-in
- **MOSFET**
Double-side cooling package realizes high heat conduction.



contact

Toshiba Electronic Devices & Storage Corporation
Automotive & Industrial Application Engineering Dept.,
Discrete Semiconductor Application Engineering Center
Tel : 044-549-8375 <https://toshiba.semicon-storage.com/jp/contact.html>

Product information
Access from here

