

TOSHIBA

Basic Knowledge of Discrete Semiconductor Device

Chapter IV

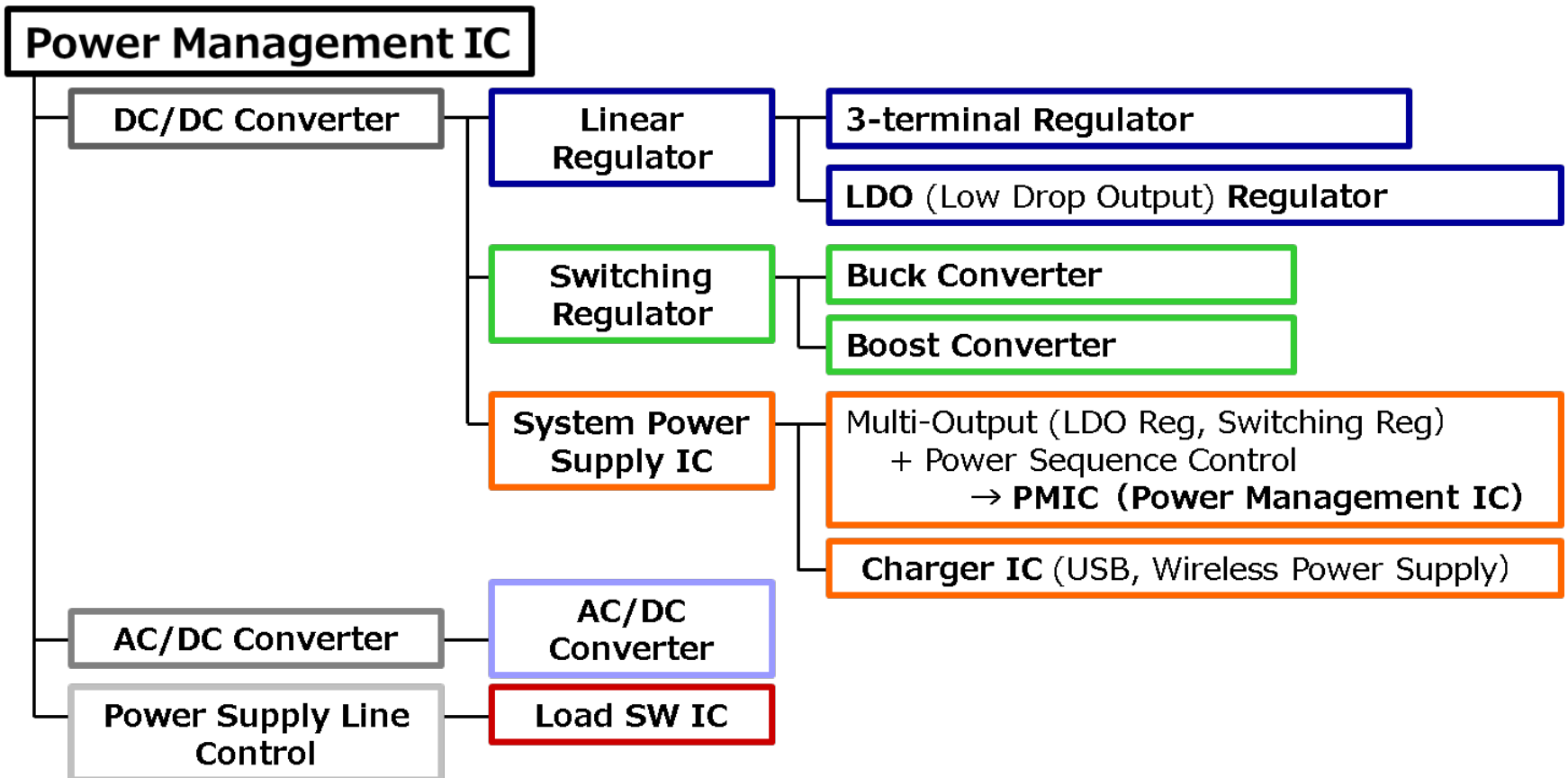
Local Power Supply ICs

February 2022

Toshiba Electronic Devices & Storage Corporation

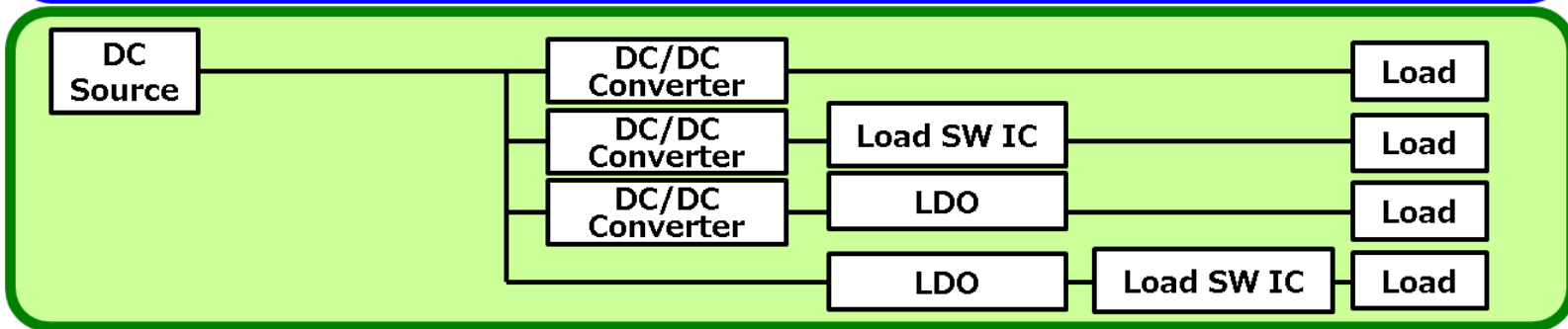
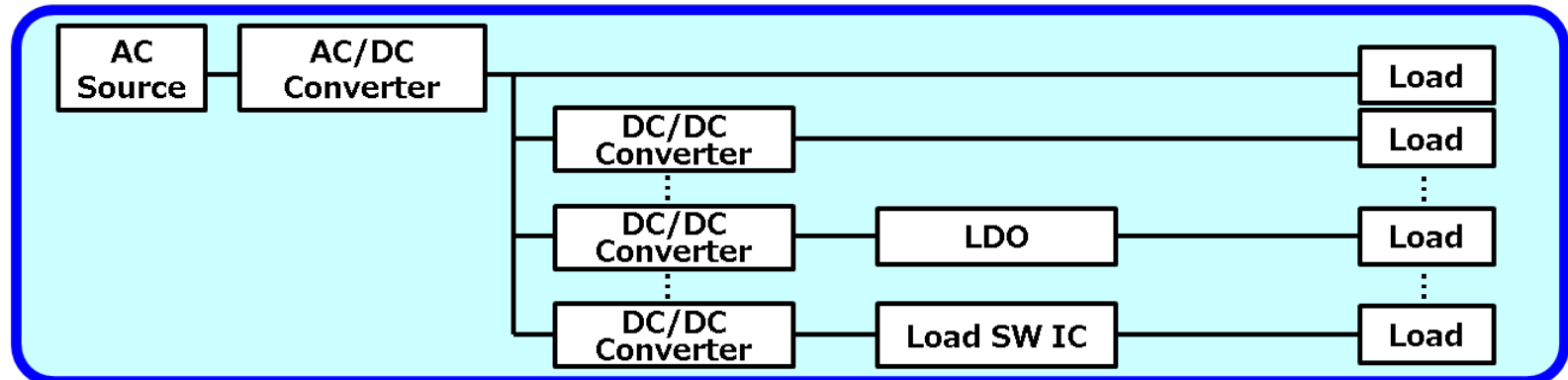
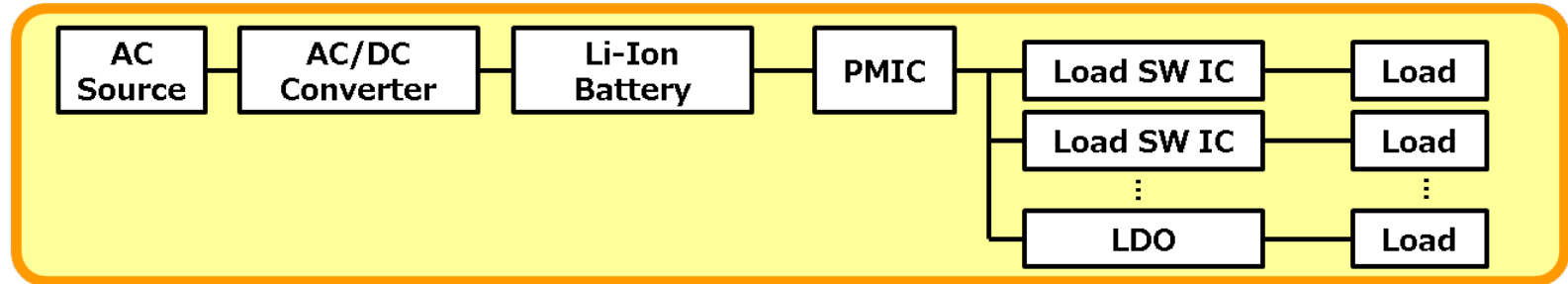
Power Management IC

Power management is a function to manage power supply to support multi-functionalization of equipment and power saving. This IC is called a power management IC.
In addition to a simple linear regulator IC, a switching regulator IC, and a multifunctional system power supply IC, the power management IC includes a load switch IC that stops power supply to the load during standby and controls the power supply sequence.



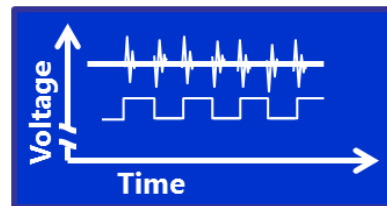
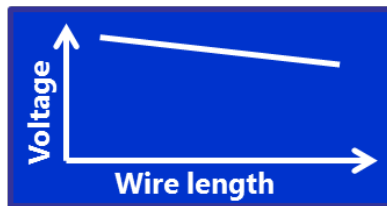
Example of Power Line Structure in a System

Various kinds of power management ICs are used for the power supply in the equipment according to the specification required by the system.



Why POL Supply ICs Are Wanted

High-precision and low-noise power supply is required owing to low voltage and multi-functionalization of the LSI used. Meanwhile, because of long wiring in the circuit board, voltage drop and power supply noise due to crosstalk have become problems. For this application, the POL (Point of Load) power supply IC that generates and supplies voltage near the load end (near the circuit block to be used) is attracting attention.

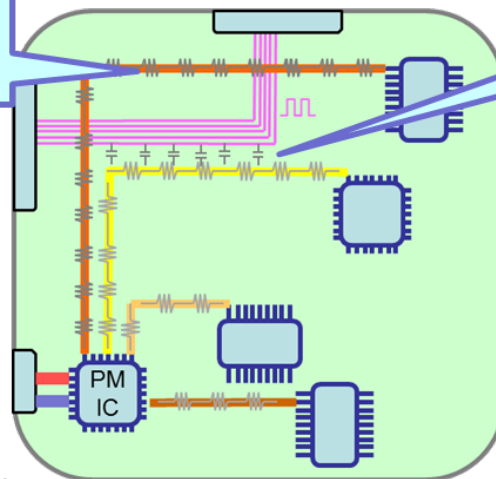


By placing the POL power supply IC close to the LSI to be used, it is possible to supply high-precision and low-noise power supply.

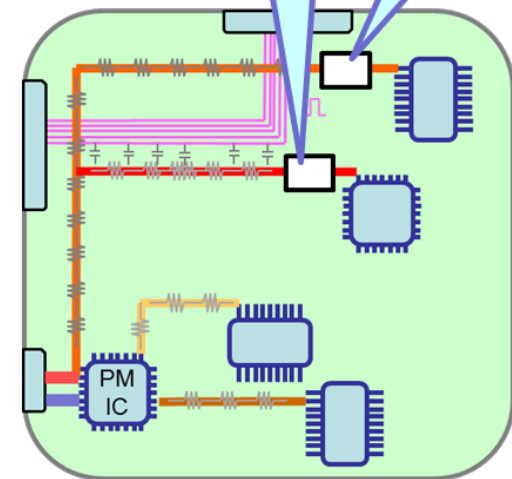
Voltage drop due to wiring resistance

Crosstalk due to wiring capacitance

When configured with only PMIC, the system may malfunction because of voltage drop and noise.



POL power supply IC



In long wiring portions or for circuits susceptible to noise, local power supply ICs are arranged near the LSIs.

Power supply image on product board

Types of Local Power Supply ICs

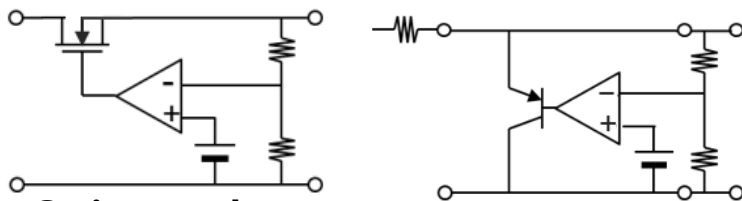
There are two types of local power supply ICs: (1) linear type and (2) switching type. The circuit designer can maximize the performance of the equipment by appropriately selecting these power ICs and placing them in the appropriate place.

Linear type

Linear type includes a series regulator (typically LDO and 3-terminal regulator) and a shunt regulator. A low-noise, high-precision, local power supply can be easily and inexpensively produced with few external parts. However, losses are high (inefficient) and only step-down type can be used. In particular, shunt regulators are inefficient and tend not to be used nowadays.

Switching type

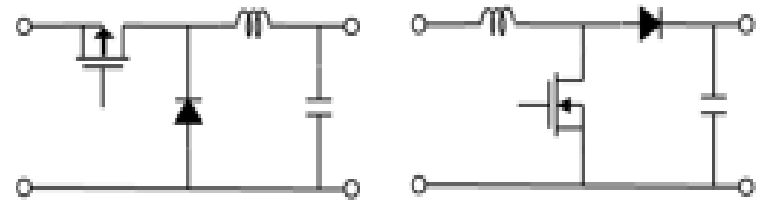
It is often called a DC/DC converter. Depending on the circuit configuration, either boost type or buck type can be used. Although the loss is low (high efficiency), external parts such as coil are necessary, and the circuit size becomes large and expensive. The input DC voltage is switched (~ 1 MHz) to create a rectangular wave, and this rectangular wave is smoothed and converted to the desired DC voltage. Although the variety of ICs offered by our company is limited, we offer a wide variety of MOSFETs for use in DC/DC converter applications.



Series regulator

Shunt regulator

Linear type



Buck

Boost

Switching type

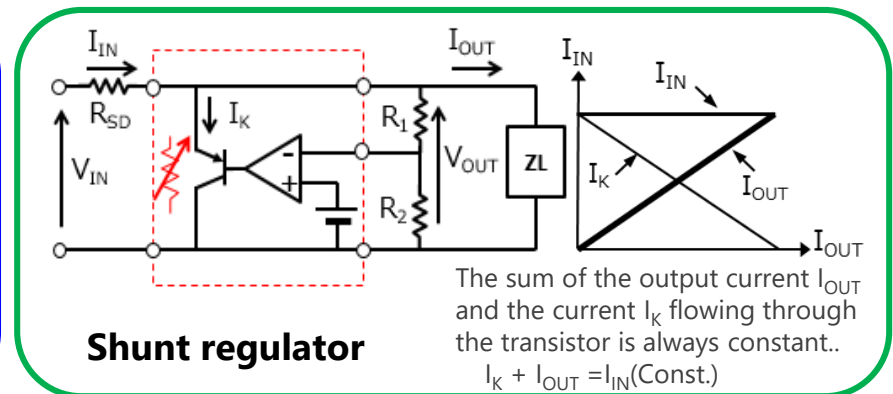
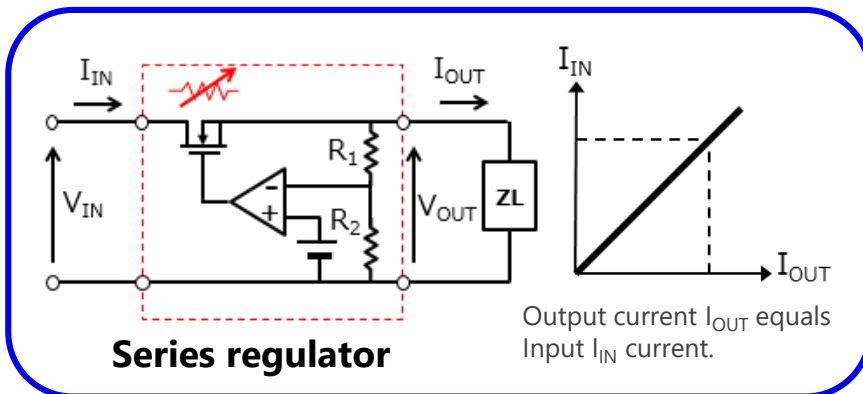
Operation of Linear Regulators

Series regulators

External parts are unnecessary as shown in the lower left figure. (Input/Output capacitors are necessary.) The MOSFET operates as a variable resistor so that the output voltage becomes constant voltage. The potential difference $(V_{IN} - V_{OUT}) \times$ input current (I_{IN}) between the drain and source of the MOSFET is a loss. For example, if the input is 5 V and the output is 3 V, the efficiency is 60%. It is used as a power supply for circuits requiring low noise and output voltage accuracy.

Shunt regulators

The area surrounded by the dotted line shown in the lower right figure is the IC. It needs three external resistors. The built-in transistor operates as a variable resistor so that $I_K + I_{OUT} = I_{IN} = \text{constant}$. As a result, the voltage generated at R_{SD} becomes constant and the output voltage is made constant voltage. But in addition to the output current, a cathode current flowing through the transistor is required. Also, there is a voltage drop at the input-side resistor R_{SD} , which reduces the efficiency. It is used for low-current (~ 20 mA) applications such as switching power supply reference voltage and switching power supply photocoupler driver.



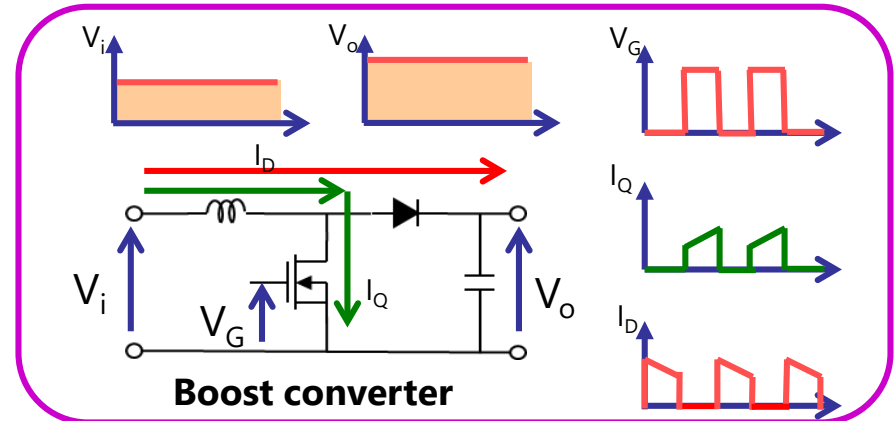
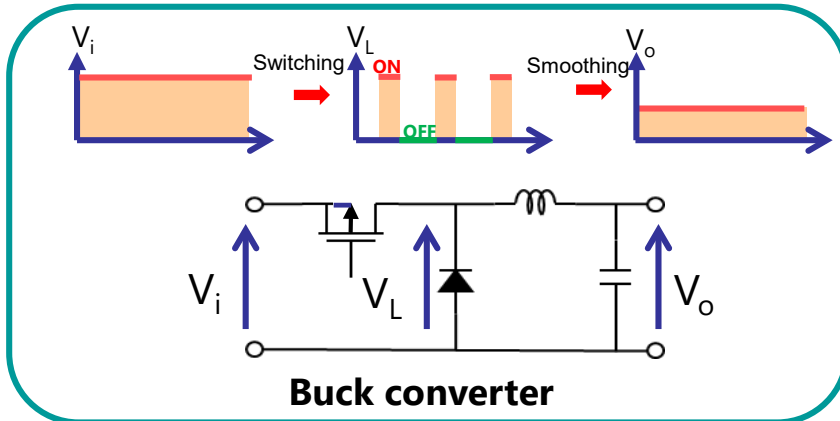
Operation of Switching Regulators

Buck converter

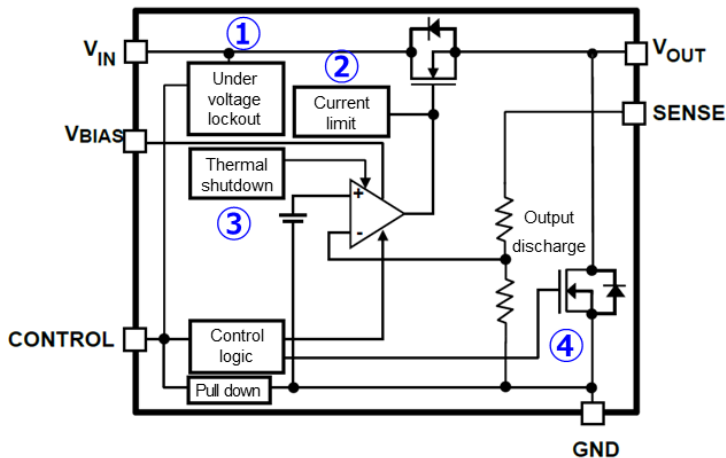
The figure below on the left shows the operation image. A rectangular wave is created by MOSFET repeating ON/OFF. This wave is applied to the coil. A desired DC voltage can be obtained by smoothing (averaging) this rectangular wave. The output voltage value is determined by the duty ratio of the rectangular wave.

Boost converter

As the figure below on the right shows, when the MOSFET is ON, current of the coil mainly flows through the MOSFET. At this time, energy is accumulated in the coil. The coil operates so as to release the accumulated energy and suppress the change of the current. When the MOSFET turns OFF, the current flowing through the coil will lose the path up to now. However, due to the property of continuing the current of the coil, the current flows through the diode and the capacitor is charged. This causes voltage exceeding the input voltage to be generated.



Functions of LDO

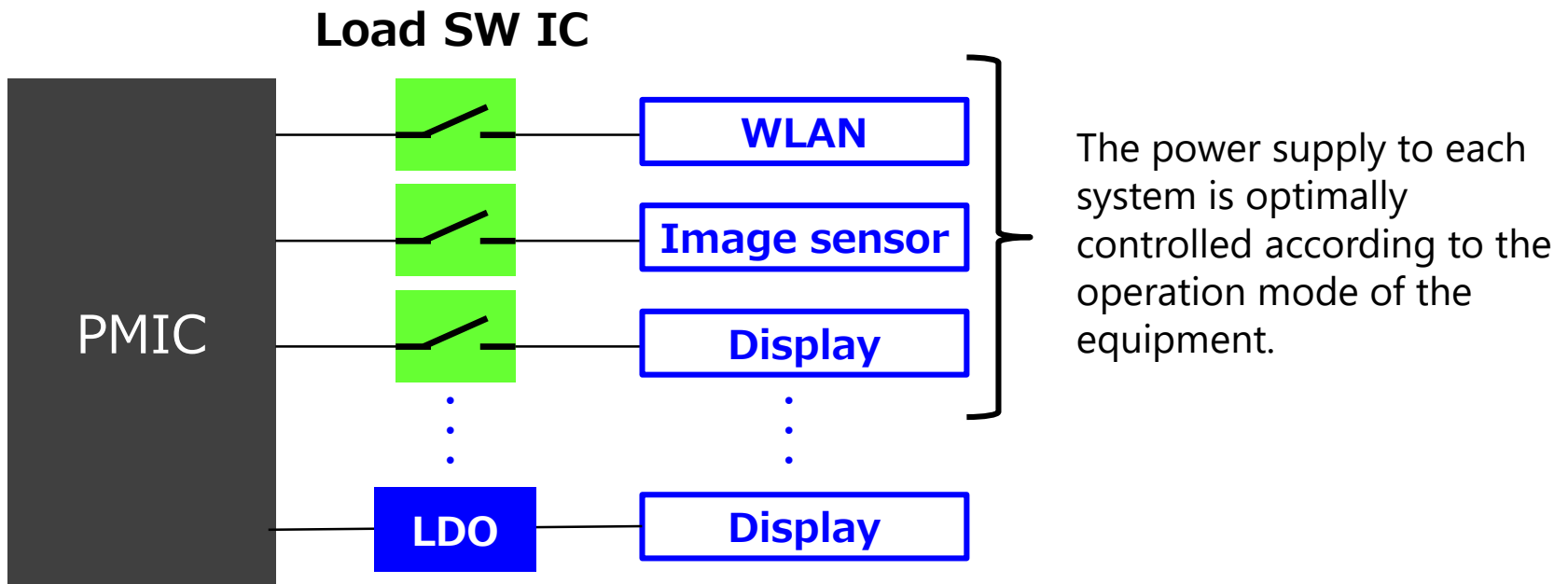


LDO block diagram

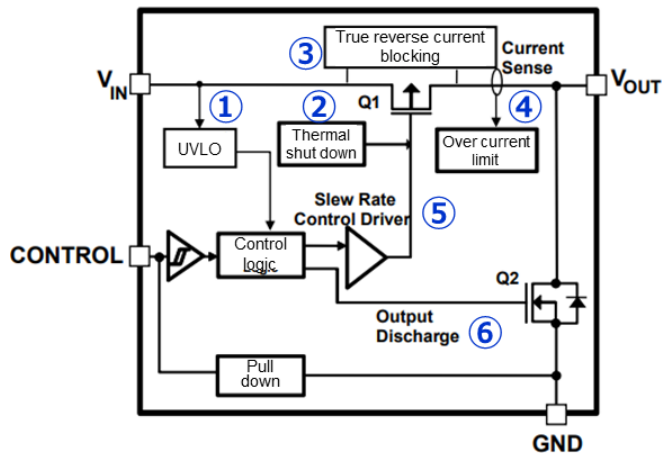
- 1. Under voltage lock out (UVLO):** This function places the IC in the standby state when the input voltage drops below the specified input voltage so that the internal circuit becomes unstable, and malfunction does not occur.
- 2. Current limit:** This function protects against degradation and destruction due to heat generation of the device itself when the output terminal V_{OUT} goes into an unintentional short mode state. There are two types of overcurrent protection: the foldback type that simultaneously reduces the output current and output voltage, and the current limiter type that reduces the output voltage while keeping the output current constant.
- 3. Thermal shut down (TSD):** It is a circuit to prevent deterioration and destruction of the device because of remarkable ambient temperature rise, heat generation of the device itself due to unintentional high current load etc. When the specified temperature is detected by the internal temperature detection circuit, the output transistor is turned off.
- 4. Output discharge:** When the output transistor is turned off, the terminal voltage of V_{OUT} may remain for a certain time depending on the load capacitance connected to the output terminal. This circuit rapidly discharges the charge accumulated on the load side and drops the V_{OUT} terminal voltage to near the IC GND .

Load Switch IC

The load switch IC is connected between the power supply and the load (IC or LSI). It is a power management IC that reduces power consumption by controlling on/off of power supply lines supplied to ICs and LSIs depending on the operating mode of the system. A similar switch can be configured with a mechanical relay or a discrete (MOSFET), but the load switch IC has low power consumption and various protection functions built in, so that improvement of system reliability can be expected.



Functions of Load Switch IC



**Load SW IC
block diagram**

- 1. Under voltage lock out (UVLO):** This function places the IC in the standby state when the input voltage drops below the specified input voltage so that the internal circuit becomes unstable, and malfunction does not occur.
- 2. Thermal shut down (TSD):** It is a circuit to prevent deterioration and destruction of the device because of remarkable ambient temperature rise, heat generation of the device itself due to unintentional high current load etc. When the specified temperature is detected by the internal temperature detection circuit, the output transistor is turned off.
- 3. True reverse current blocking:** When input voltage V_{IN} becomes higher than output voltage V_{OUT} , current flows back from V_{OUT} pin to V_{IN} pin. This function prevents reverse flow and protects the power supply etc. connected to the V_{IN} terminal from deterioration and destruction.
- 4. Over current limit:** When the output terminal V_{OUT} becomes unintentionally shorted, it protects against deterioration and destruction due to the heat generation of the device itself.
- 5. Slew rate control driver:** This circuit suppresses inrush current generated during switching transient.
- 6. Output discharge:** In a general load switch circuit, when the output transistor is turned off, the terminal voltage of V_{OUT} may remain for a certain time depending on the load capacitance connected to the output terminal. This circuit rapidly discharges the charge accumulated on the load side and drops the V_{OUT} terminal voltage to near the IC GND.

RESTRICTIONS ON PRODUCT USE

Toshiba Corporation and its subsidiaries and affiliates are collectively referred to as "TOSHIBA". Hardware, software and systems described in this document are collectively referred to as "Product".

- TOSHIBA reserves the right to make changes to the information in this document and related Product without notice.
- This document and any information herein may not be reproduced without prior written permission from TOSHIBA. Even with TOSHIBA's written permission, reproduction is permissible only if reproduction is without alteration/omission.
- Though TOSHIBA works continually to improve Product's quality and reliability, Product can malfunction or fail. Customers are responsible for complying with safety standards and for providing adequate designs and safeguards for their hardware, software and systems which minimize risk and avoid situations in which a malfunction or failure of Product could cause loss of human life, bodily injury or damage to property, including data loss or corruption. Before customers use the Product, create designs including the Product, or incorporate the Product into their own applications, customers must also refer to and comply with (a) the latest versions of all relevant TOSHIBA information, including without limitation, this document, the specifications, the data sheets and application notes for Product and the precautions and conditions set forth in the "TOSHIBA Semiconductor Reliability Handbook" and (b) the instructions for the application with which the Product will be used with or for. Customers are solely responsible for all aspects of their own product design or applications, including but not limited to (a) determining the appropriateness of the use of this Product in such design or applications; (b) evaluating and determining the applicability of any information contained in this document, or in charts, diagrams, programs, algorithms, sample application circuits, or any other referenced documents; and (c) validating all operating parameters for such designs and applications. **TOSHIBA ASSUMES NO LIABILITY FOR CUSTOMERS' PRODUCT DESIGN OR APPLICATIONS.**
- PRODUCT IS NEITHER INTENDED NOR WARRANTED FOR USE IN EQUIPMENTS OR SYSTEMS THAT REQUIRE EXTRAORDINARILY HIGH LEVELS OF QUALITY AND/OR RELIABILITY, AND/OR A MALFUNCTION OR FAILURE OF WHICH MAY CAUSE LOSS OF HUMAN LIFE, BODILY INJURY, SERIOUS PROPERTY DAMAGE AND/OR SERIOUS PUBLIC IMPACT ("UNINTENDED USE").** Except for specific applications as expressly stated in this document, Unintended Use includes, without limitation, equipment used in nuclear facilities, equipment used in the aerospace industry, lifesaving and/or life supporting medical equipment, equipment used for automobiles, trains, ships and other transportation, traffic signaling equipment, equipment used to control combustions or explosions, safety devices, elevators and escalators, and devices related to power plant. **IF YOU USE PRODUCT FOR UNINTENDED USE, TOSHIBA ASSUMES NO LIABILITY FOR PRODUCT.** For details, please contact your TOSHIBA sales representative or contact us via our website.
- Do not disassemble, analyze, reverse-engineer, alter, modify, translate or copy Product, whether in whole or in part.
- Product shall not be used for or incorporated into any products or systems whose manufacture, use, or sale is prohibited under any applicable laws or regulations.
- The information contained herein is presented only as guidance for Product use. No responsibility is assumed by TOSHIBA for any infringement of patents or any other intellectual property rights of third parties that may result from the use of Product. No license to any intellectual property right is granted by this document, whether express or implied, by estoppel or otherwise.
- ABSENT A WRITTEN SIGNED AGREEMENT, EXCEPT AS PROVIDED IN THE RELEVANT TERMS AND CONDITIONS OF SALE FOR PRODUCT, AND TO THE MAXIMUM EXTENT ALLOWABLE BY LAW, TOSHIBA (1) ASSUMES NO LIABILITY WHATSOEVER, INCLUDING WITHOUT LIMITATION, INDIRECT, CONSEQUENTIAL, SPECIAL, OR INCIDENTAL DAMAGES OR LOSS, INCLUDING WITHOUT LIMITATION, LOSS OF PROFITS, LOSS OF OPPORTUNITIES, BUSINESS INTERRUPTION AND LOSS OF DATA, AND (2) DISCLAIMS ANY AND ALL EXPRESS OR IMPLIED WARRANTIES AND CONDITIONS RELATED TO SALE, USE OF PRODUCT, OR INFORMATION, INCLUDING WARRANTIES OR CONDITIONS OF MERCHANTABILITY, FITNESS FOR A PARTICULAR PURPOSE, ACCURACY OF INFORMATION, OR NONINFRINGEMENT.**
- Do not use or otherwise make available Product or related software or technology for any military purposes, including without limitation, for the design, development, use, stockpiling or manufacturing of nuclear, chemical, or biological weapons or missile technology products (mass destruction weapons). Product and related software and technology may be controlled under the applicable export laws and regulations including, without limitation, the Japanese Foreign Exchange and Foreign Trade Law and the U.S. Export Administration Regulations. Export and re-export of Product or related software or technology are strictly prohibited except in compliance with all applicable export laws and regulations.
- Please contact your TOSHIBA sales representative for details as to environmental matters such as the RoHS compatibility of Product. Please use Product in compliance with all applicable laws and regulations that regulate the inclusion or use of controlled substances, including without limitation, the EU RoHS Directive. **TOSHIBA ASSUMES NO LIABILITY FOR DAMAGES OR LOSSES OCCURRING AS A RESULT OF NONCOMPLIANCE WITH APPLICABLE LAWS AND REGULATIONS.**

TOSHIBA