

500 W Server Power Supply

Reference Guide

RD049-RGUIDE-01

TOSHIBA ELECTRONIC DEVICES & STORAGE CORPORATION

Contents

1. Introduction	3
2. Specifications	3
2.1. Power Supply Specifications	3
2.2. Outline	4
2.3. Block Diagram	5
2.4. Component Arrangement	6
2.5. PCB Pattern	8
3. Operating Procedure	10
3.1. Connection with External Equipment	10
3.2. Power-Up and Power-Off Procedures	11
3.3. Precautions for Evaluation (Electric Shock, Burn Injury, etc.)	11
4. Performance	13
4.1. Efficiency	13

1. Introduction

This reference guide describes the specifications, usage, and various characteristics of the 500 W server power supply (this power supply). This power supply can provide 500 W of power at the outgoing DC 12 V. Input AC power (90 V to 264 V) and output DC 12 V through CCM PFC circuitry and isolated half-bridge LLC circuitry. N+1 redundant operation can be performed with ORing circuitry of the output section. Since small components are selected, they can be applied to a variety of sizes and applications, including general-purpose 1U server power supplies. Our power MOSFET, which enables high-speed switching, are used for switching elements, realizing high-efficiency.

2. Specifications

2.1. Power Supply Specifications

Table 2.1 shows the input and output specification of this power supply.

Table 2.1 500 W Server Power Supply Specification

Parameter	Condition	Min	Typ.	Max	Unit
Input Characteristics					
AC input voltage (rms)		90		264	V
AC input frequency		47		63	Hz
CCM PFC circuit output characteristics (internal characteristics)					
Output voltage			390		V
Switching frequency			78		kHz
Output characteristics (LLC circuit)					
Output voltage		11.4	12.0	12.6	V
Output current				42	A
Maximum output power				500	W
Output ripple voltage	Ta = 25 °C			200	mV

2.2. Outline

Fig. 2.1 shows this power supply.



Fig. 2.1 500 W Server Power Supply

Outline size : 240 mm x 135 mm x 40 mm

2.3. Block Diagram

Fig. 2.2 shows a simplified block diagram to understand the function and operation of this power supply. Fig. 2.2 Refer to RD049-SCHEMATIC-01 for actual schematics and to RD049-BOM-01_E for bill of materials.

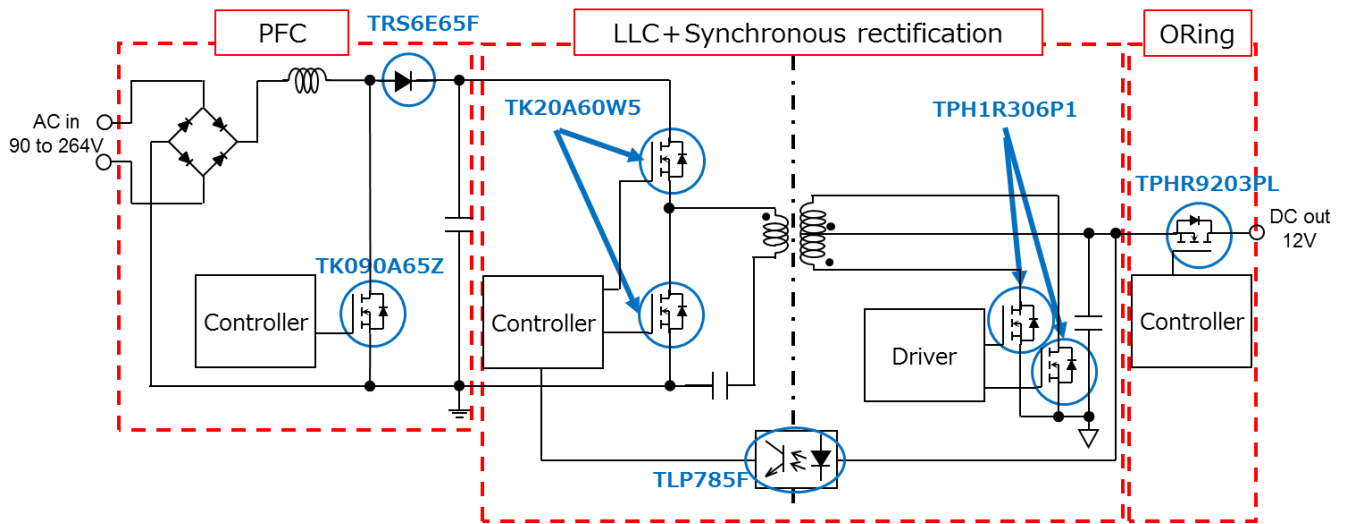


Fig. 2.2 Block Diagram

2.4. Component Arrangement

Fig. 2.3 shows the components layout on the PCB (top side).

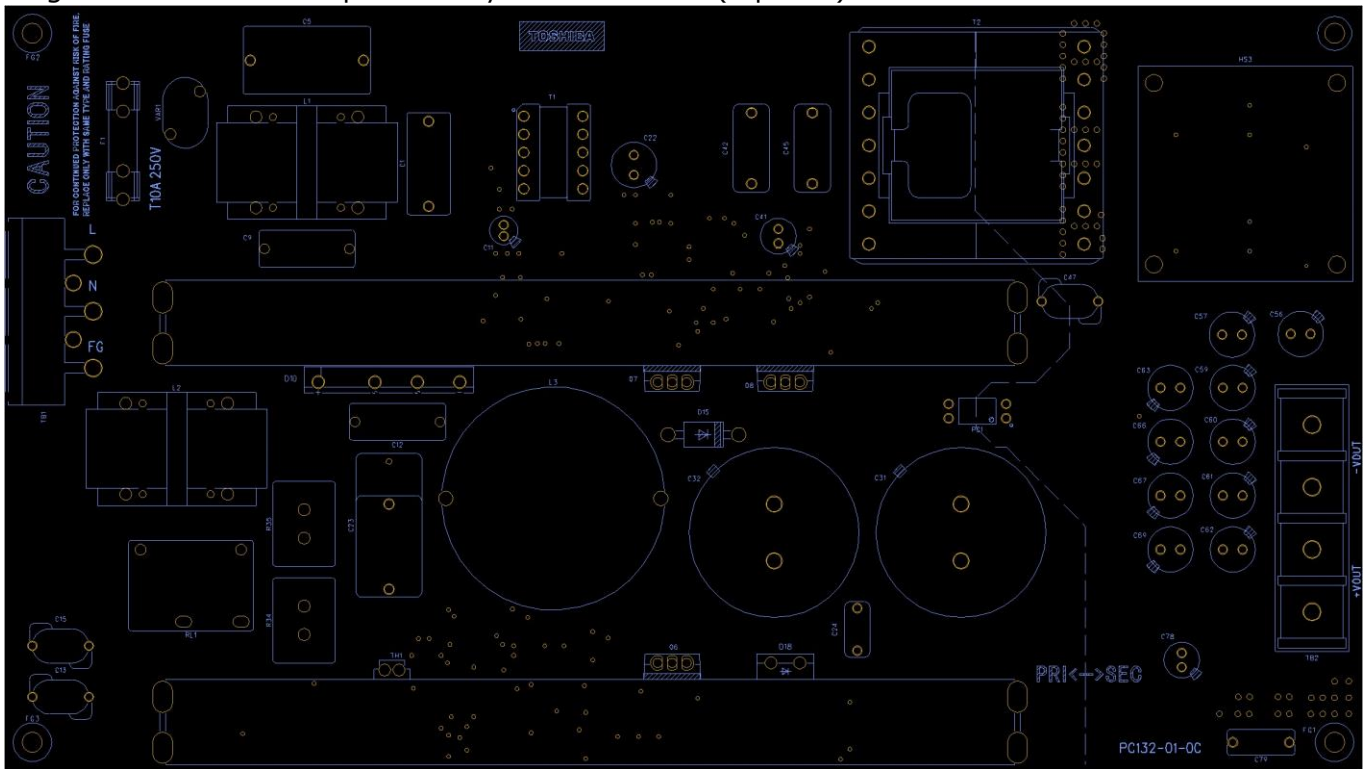


Fig. 2.3 Components Layout on the PCB (top side)

Fig. 2.4 shows the components layout on the PCB (back side).

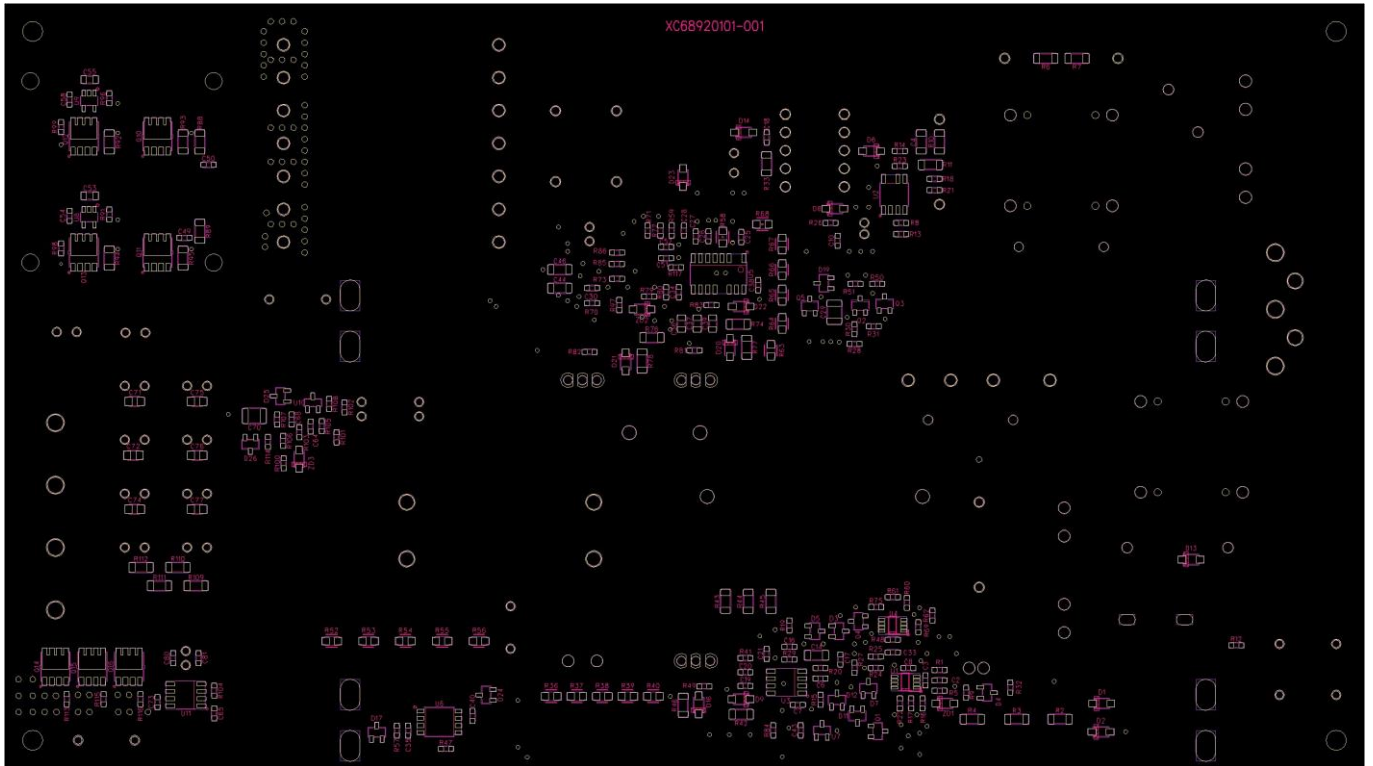


Fig. 2.4 Components Layout on the PCB (back side)

2.5. PCB Pattern

Fig. 2.5 shows Layer1 of the PCB.

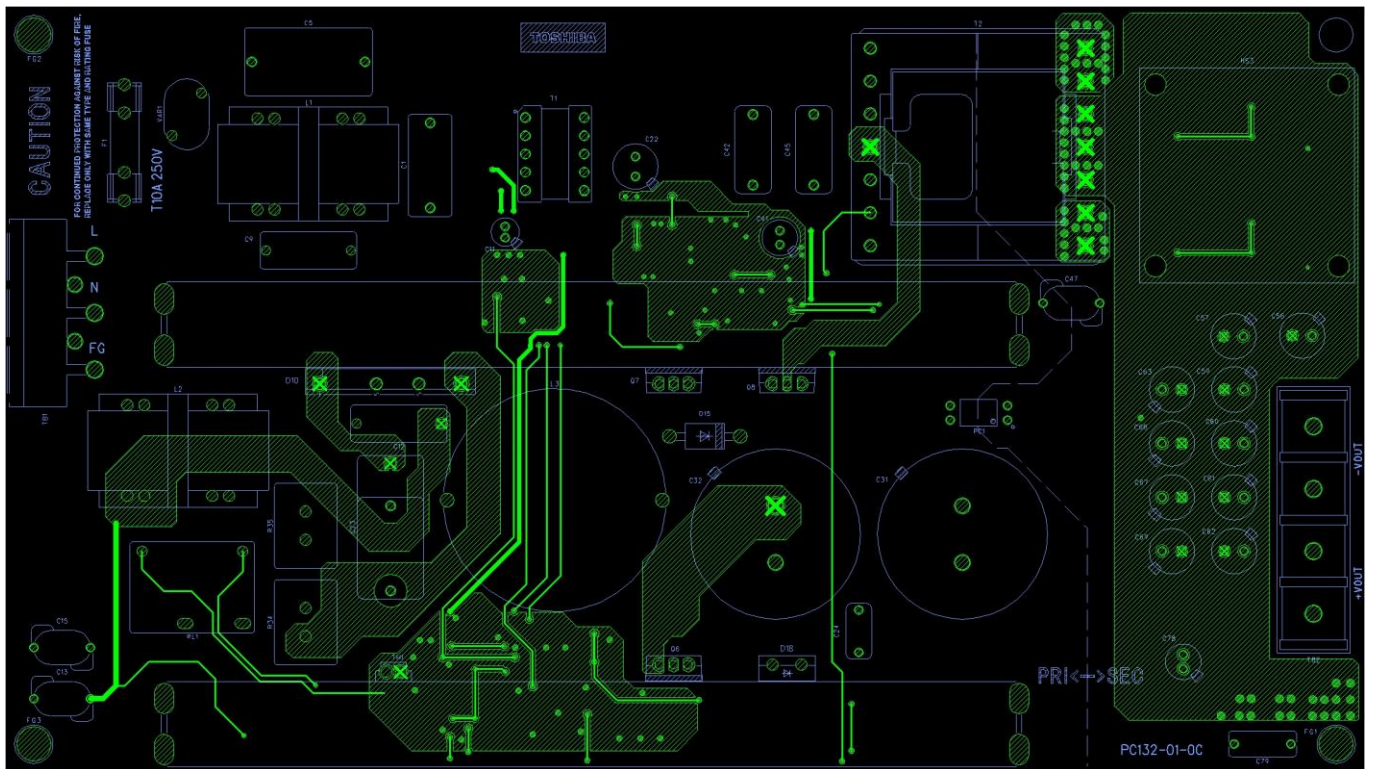


Fig. 2.5 Layer1

Fig. 2.6 shows Layer2 of the PCB.

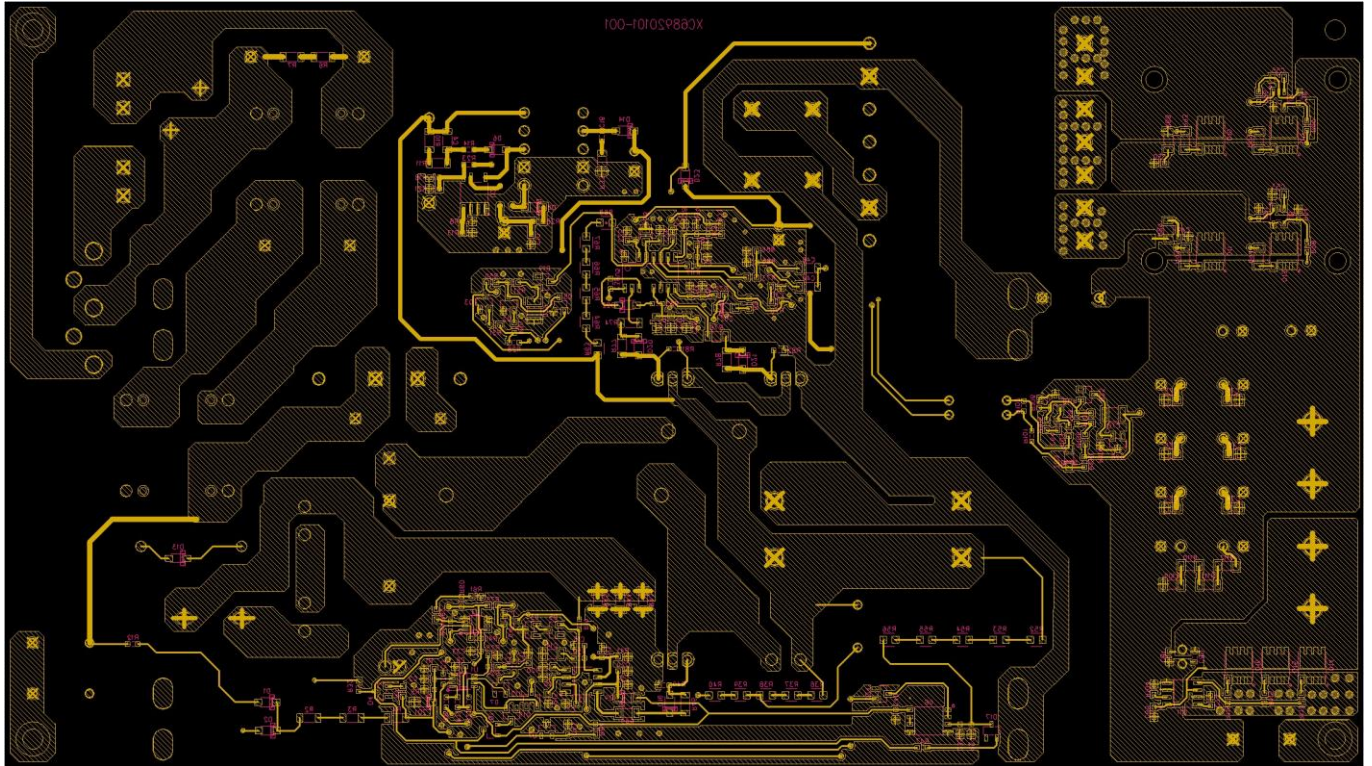


Fig. 2.6 Layer2

3. Operating Procedure

This section describes the operating procedure of this power supply.

3.1. Connection with External Equipment

Fig. 3.1 shows the connections of this power supply with external equipment. Red rectangles indicate terminals connected to an external power supply. Connect an AC stabilized power supply to the Input (Live) and Input (Neutral) terminals. Choose appropriate power supplies, cables, lead wires, and connectors that meet the Power Supply Specifications shown on the Table 2.1. Blue rectangles indicate 12 V output terminals. Connect a load unit to the Output (+) and Output (-) terminals. Chose appropriate load units, cables, and connectors that meet the Power Supply Specifications shown on the Table 2.1.

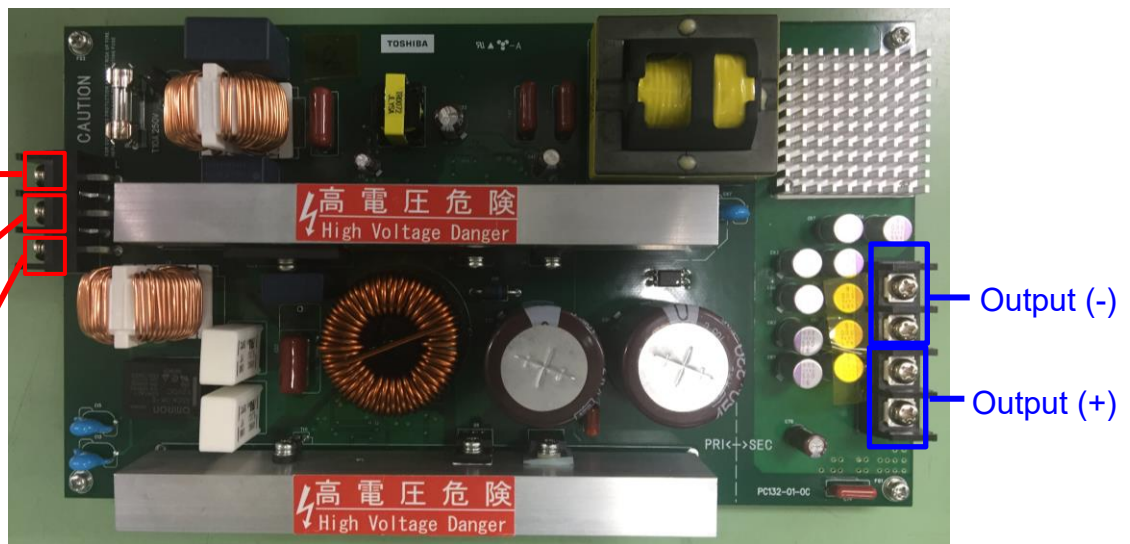


Fig. 3.1 Terminals for External Equipment

3.2. Power-Up and Power-Off Procedures

Make sure all of the following terminal voltages are 0 V, before power-up.
Input (+) terminal, Input (-) terminal, Output (+) terminal, and Output (-) terminal

[Power-Up Procedure]

Turn on the AC stabilized power supply

[Power-Off Procedure]

Turn off the AC stabilized power supply

3.3. Precautions for Evaluation (Electric Shock, Burn Injury, etc.)

You can receive an electric shock if you touch the primary side while AC stabilized power is being applied to this power supply. Don't touch any portion on the primary side while the AC power is being applied to this power supply. Fig. 3.2 shows the boundary between the primary and secondary sides. Be very careful when measuring the waveform. You can also receive an electric shock even after power-off because electric charge remains in some capacitors. Make sure that the voltage at each portion of the PCB is low enough before you touch it.

In addition, semiconductor devices, transformers, and other components on the PCB can heat up while this power supply is on. The portions highlighted by red dashed lines in Fig. 3.3 dissipate much heat. Don't touch these areas while the power supply is on, as there is a risk of burns.

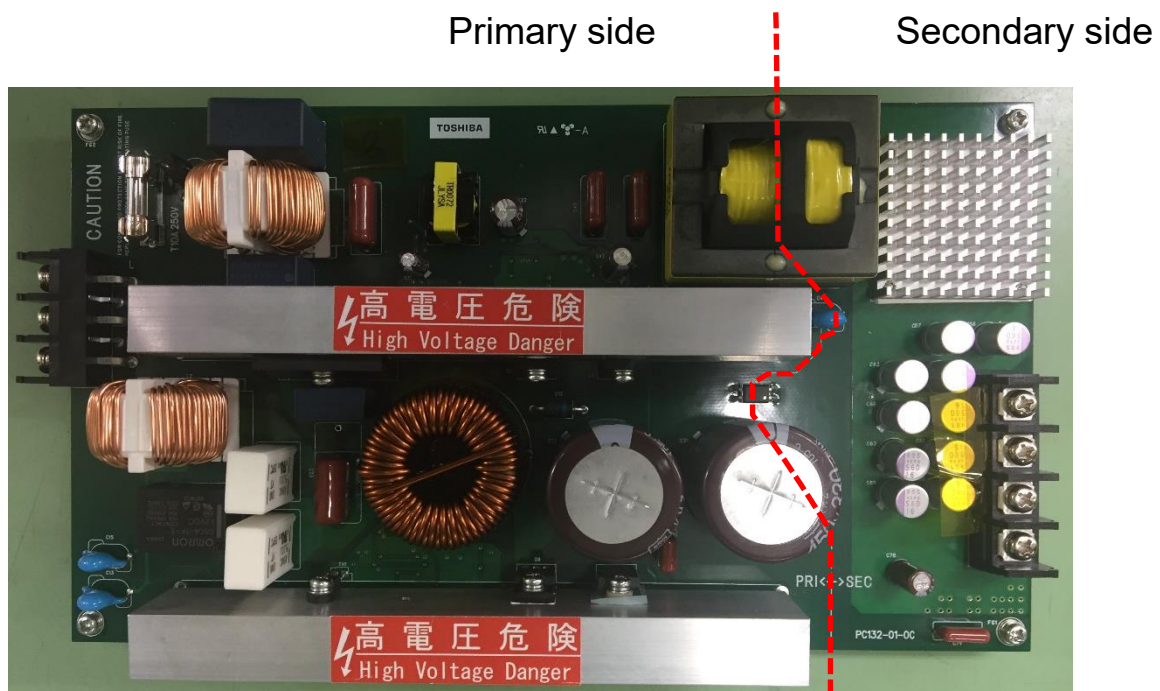


Fig. 3.2 Primary Side Area / Secondary Side

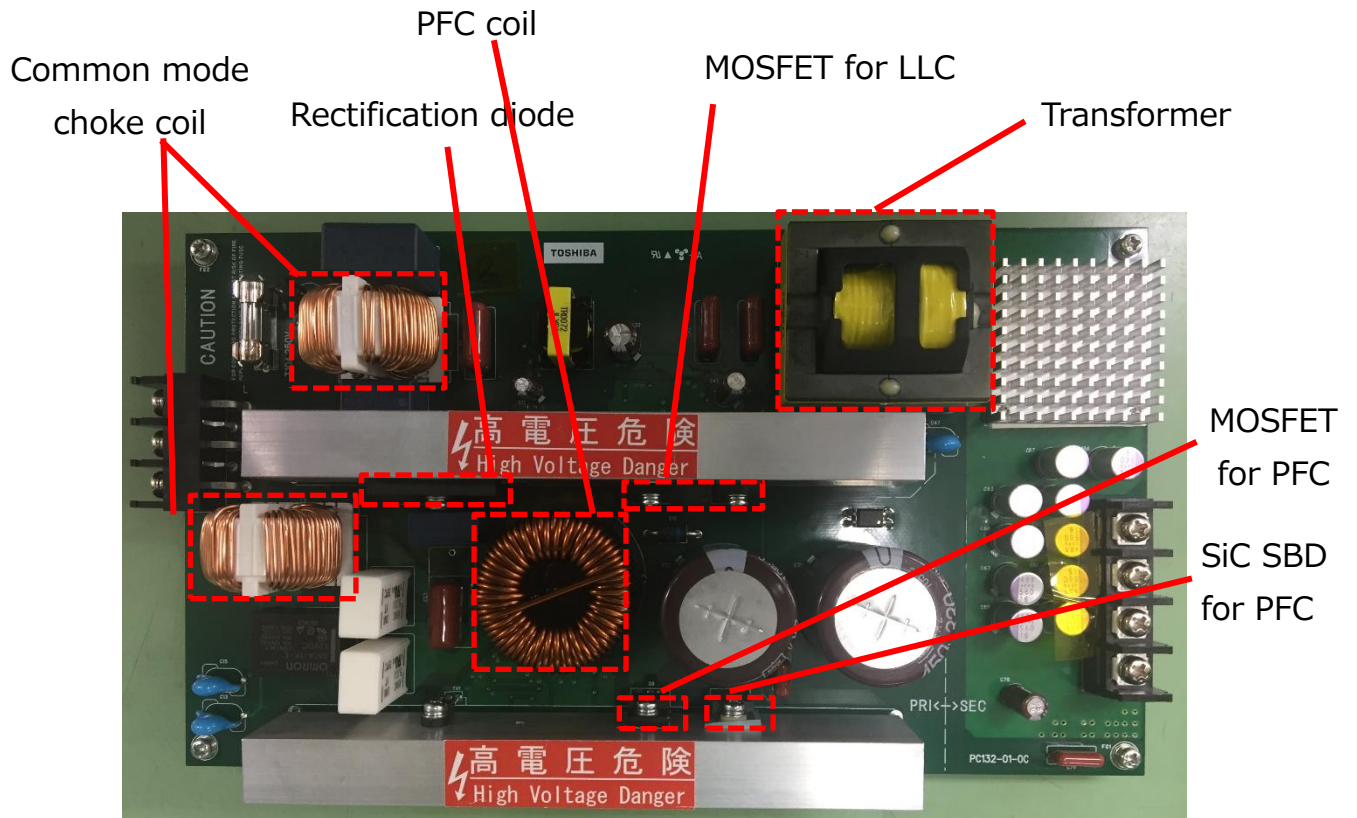


Fig. 3.3 Components Subject to High Temperature

4. Performance

This section describes the efficiency of this power supply.

4.1. Efficiency

Fig. 4.1 shows the power supply efficiency measurement results of this power supply. The output voltage of the AC stabilized power supply is set to 115 V or 230 V for measurement. The efficiency at the 100 % load is 91.3 % for 115 V input and 93.1 % for 230V input, achieving high efficiency. This power supply is equipped with ORing circuitry in the output section. When ORing circuitry is deleted, the power supply efficiency of this power supply will be improved.

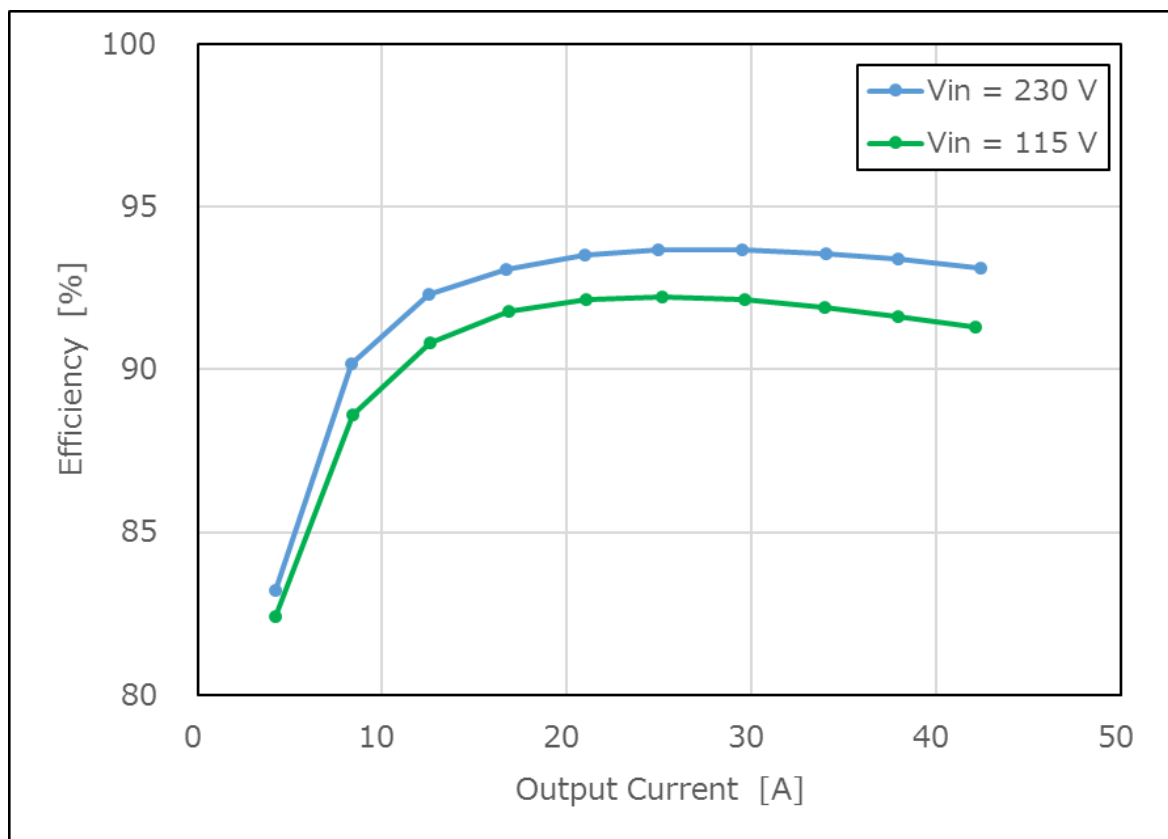


Fig. 4.1 Efficiency Result (Vin = 115 V, Vin = 230 V)

For reference, Fig. 4.2 to Fig. 4.5 show the measured power-efficiency of this power supply and the standard of 80 PLUS. The 80 PLUS standards in the chart are as of November 2020. The specification value may be updated. Please check it every time. This power supply is not certified for 80 PLUS. It is necessary to measure the power supply efficiency using the equipment that will be the final product and acquire the certification.

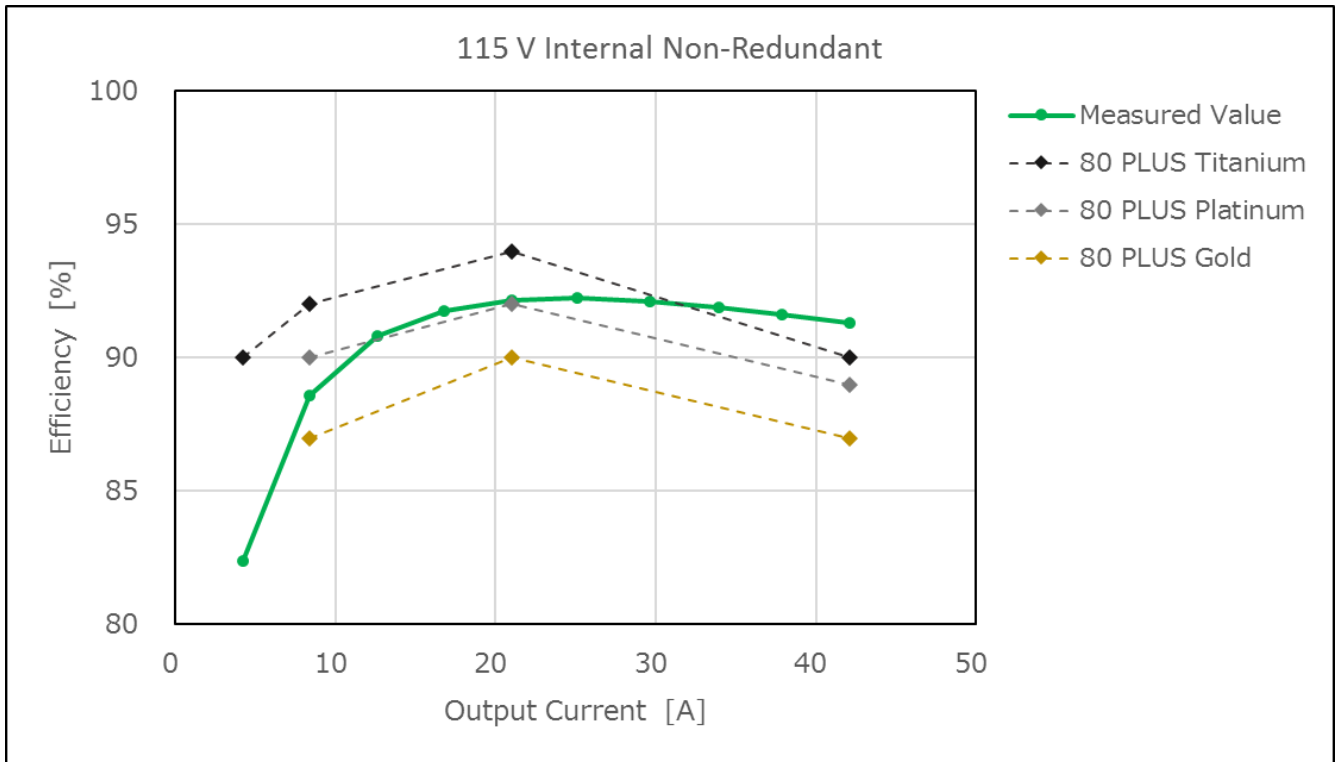


Fig. 4.2 Efficiency Result (80 PLUS : 115 V Internal Non-Redundant)

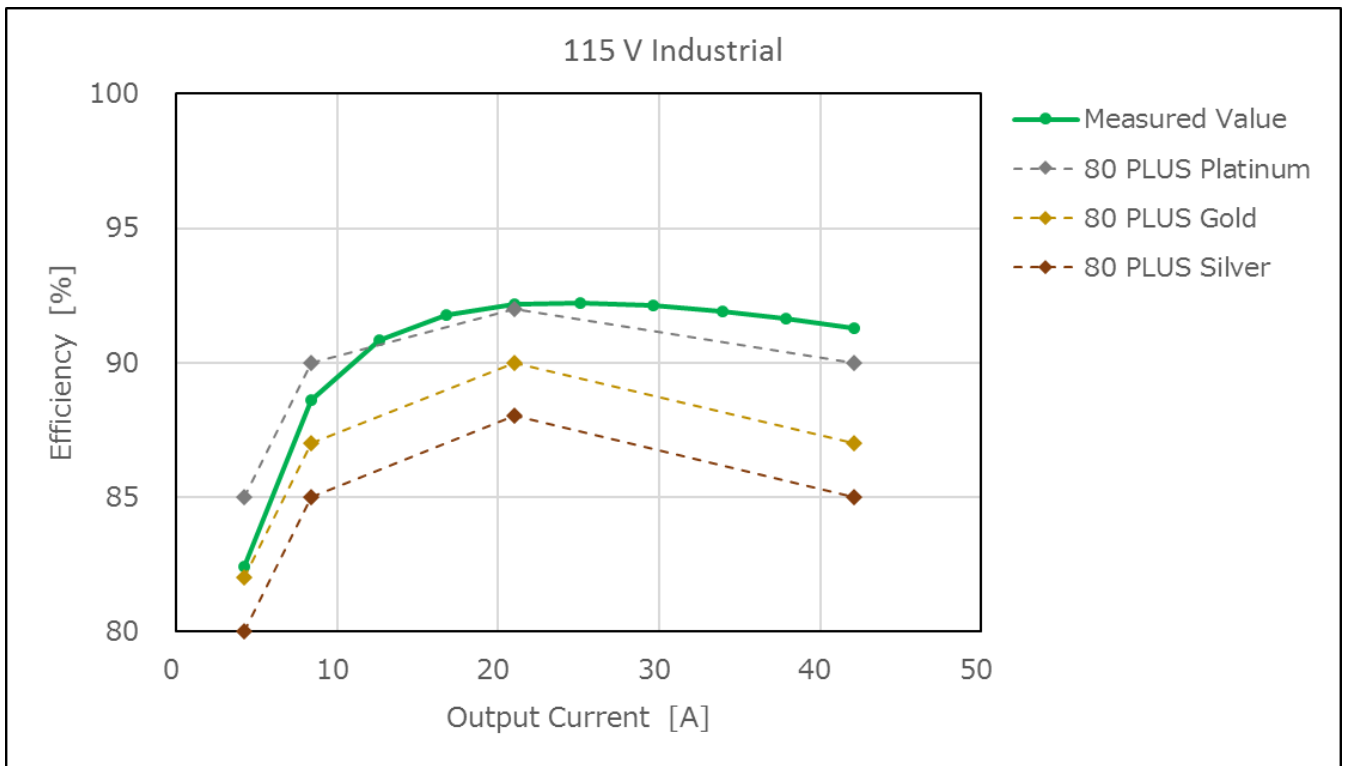


Fig. 4.3 Efficiency Result (80 PLUS : 115 V Industrial)

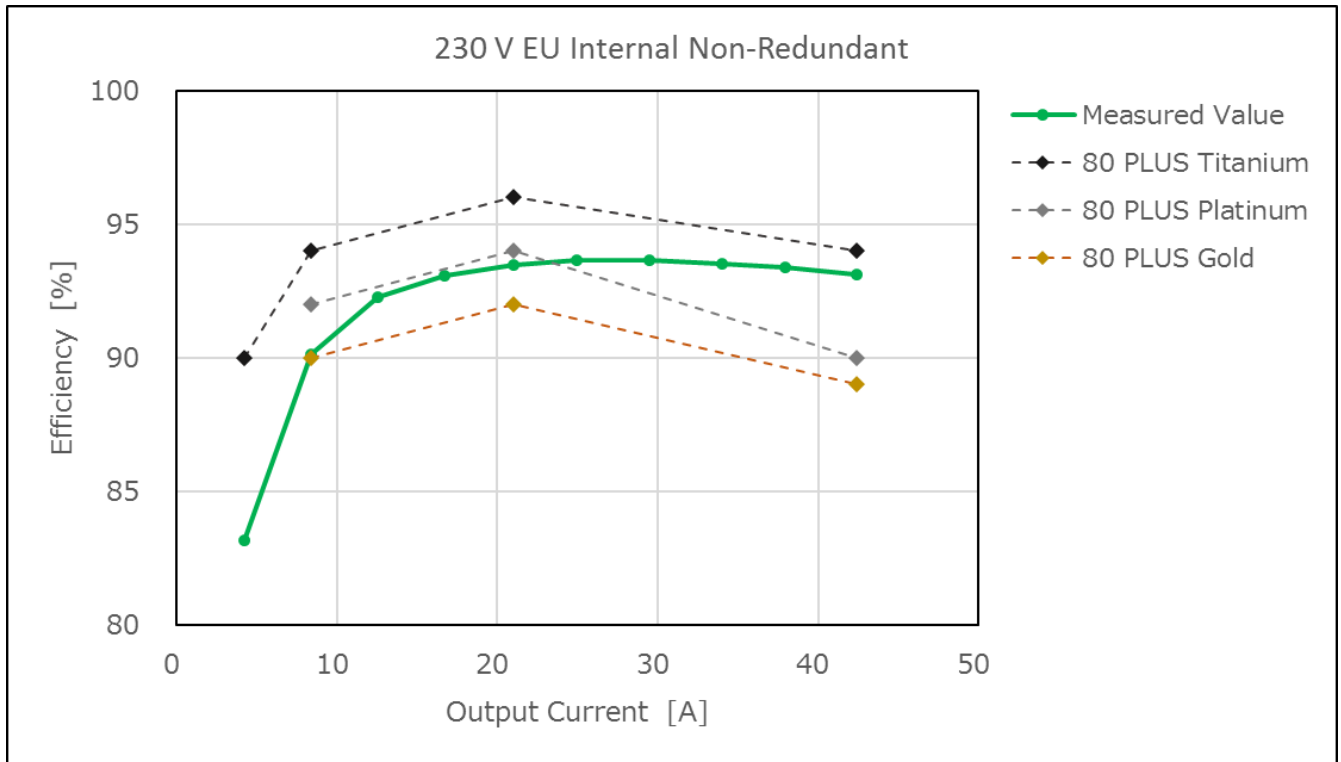


Fig. 4.4 Efficiency Result (80 PLUS : 230 V EU Internal Non-Redundant)

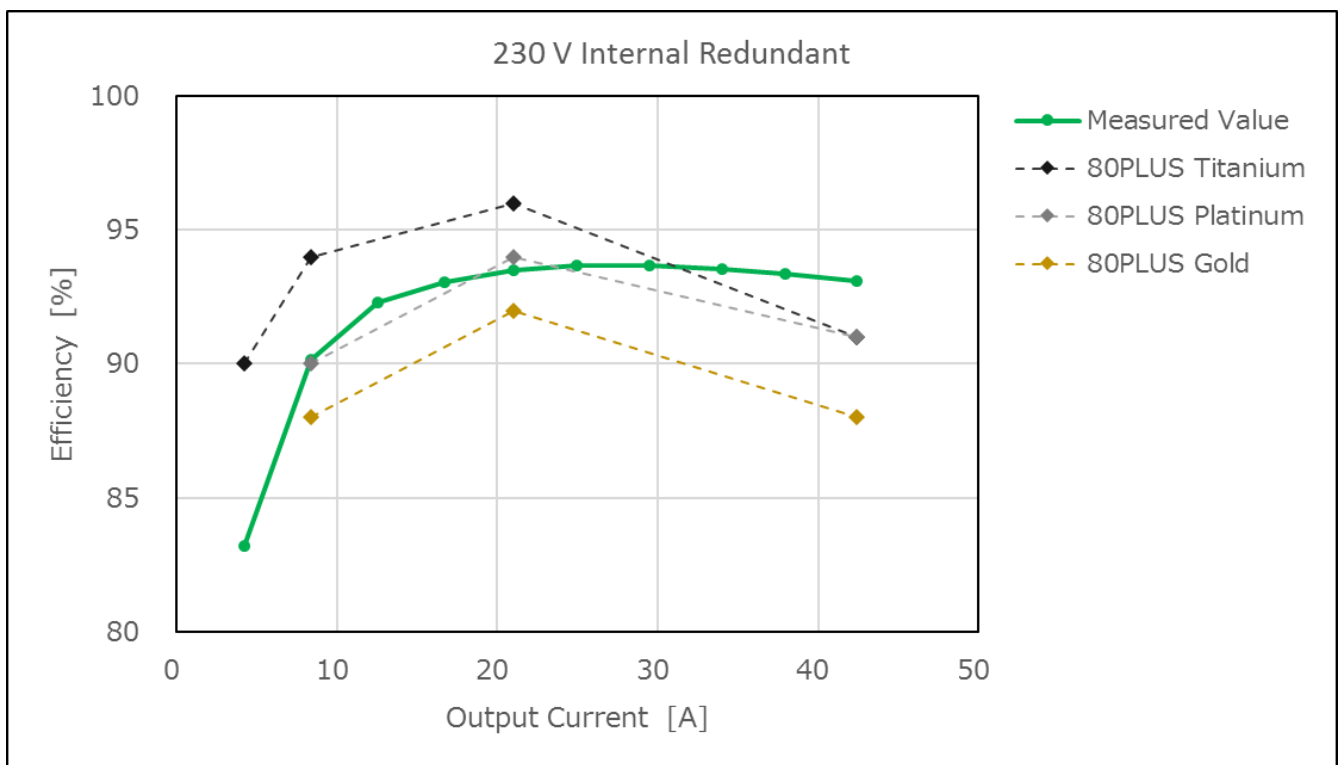


Fig. 4.5 Efficiency Result (80 PLUS : 230 V Internal Redundant)

Terms of Use

This terms of use is made between Toshiba Electronic Devices and Storage Corporation ("We") and customers who use documents and data that are consulted to design electronics applications on which our semiconductor devices are mounted ("this Reference Design"). Customers shall comply with this terms of use. Please note that it is assumed that customers agree to any and all this terms of use if customers download this Reference Design. We may, at its sole and exclusive discretion, change, alter, modify, add, and/or remove any part of this terms of use at any time without any prior notice. We may terminate this terms of use at any time and for any reason. Upon termination of this terms of use, customers shall destroy this Reference Design. In the event of any breach thereof by customers, customers shall destroy this Reference Design, and furnish us a written confirmation to prove such destruction.

1. Restrictions on usage

1. This Reference Design is provided solely as reference data for designing electronics applications. Customers shall not use this Reference Design for any other purpose, including without limitation, verification of reliability.
2. This Reference Design is for customer's own use and not for sale, lease or other transfer.
3. Customers shall not use this Reference Design for evaluation in high or low temperature, high humidity, or high electromagnetic environments.
4. This Reference Design shall not be used for or incorporated into any products or systems whose manufacture, use, or sale is prohibited under any applicable laws or regulations.

2. Limitations

1. We reserve the right to make changes to this Reference Design without notice.
2. This Reference Design should be treated as a reference only. We are not responsible for any incorrect or incomplete data and information.
3. Semiconductor devices can malfunction or fail. When designing electronics applications by referring to this Reference Design, customers are responsible for complying with safety standards and for providing adequate designs and safeguards for their hardware, software and systems which minimize risk and avoid situations in which a malfunction or failure of semiconductor devices could cause loss of human life, bodily injury or damage to property, including data loss or corruption. Customers must also refer to and comply with the latest versions of all relevant our information, including without limitation, specifications, data sheets and application notes for semiconductor devices, as well as the precautions and conditions set forth in the "Semiconductor Reliability Handbook".
4. When designing electronics applications by referring to this Reference Design, customers must evaluate the whole system adequately. Customers are solely responsible for all aspects of their own product design or applications. WE ASSUME NO LIABILITY FOR CUSTOMERS' PRODUCT DESIGN OR APPLICATIONS.
5. No responsibility is assumed by us for any infringement of patents or any other intellectual property rights of third parties that may result from the use of this Reference Design. No license to any intellectual property right is granted by this terms of use, whether express or implied, by estoppel or otherwise.
6. THIS REFERENCE DESIGN IS PROVIDED "AS IS". WE (a) ASSUME NO LIABILITY WHATSOEVER, INCLUDING WITHOUT LIMITATION, INDIRECT, CONSEQUENTIAL, SPECIAL, OR INCIDENTAL DAMAGES OR LOSS, INCLUDING WITHOUT LIMITATION, LOSS OF PROFITS, LOSS OF OPPORTUNITIES, BUSINESS INTERRUPTION AND LOSS OF DATA, AND (b) DISCLAIM ANY AND ALL EXPRESS OR IMPLIED WARRANTIES AND CONDITIONS RELATED TO THIS REFERENCE DESIGN, INCLUDING WARRANTIES OR CONDITIONS OF MERCHANTABILITY, FITNESS FOR A PARTICULAR PURPOSE, ACCURACY OF INFORMATION, OR NONINFRINGEMENT.

3. Export Control

Customers shall not use or otherwise make available this Reference Design for any military purposes, including without limitation, for the design, development, use, stockpiling or manufacturing of nuclear, chemical, or biological weapons or missile technology products (mass destruction weapons). This Reference Design may be controlled under the applicable export laws and regulations including, without limitation, the Japanese Foreign Exchange and Foreign Trade Law and the U.S. Export Administration Regulations. Export and re-export of this Reference Design are strictly prohibited except in compliance with all applicable export laws and regulations.

4. Governing Laws

This terms of use shall be governed and construed by laws of Japan.