

Application Note

CRC

Arm and Keil are registered trademarks of Arm Limited (or its subsidiaries) in the US and/or elsewhere.

All other company names, product names, and service names mentioned herein may be trademarks of their respective companies.

Table of Contents

Table of Contents.....2

1. Preface3

2. Technical Term3

3. Reference Document3

4. Target Sample Program4

5. Configuration Diagram4

6. Sample Program:CRC5

 6.1. Outlines of Operation..... 5

 6.2. Function to Use..... 5

 6.3. Interrupt to Use 5

 6.4. Configuration..... 5

 6.5. Example of Terminal Emulator Output 6

 6.5.1. Normal Operation6

 6.5.2. Case of Error Occurrence6

7. Activity diagram.....7

 7.1. main 7

 7.2. Interrupt..... 9

8. Revision History 10

RESTRICTIONS ON PRODUCT USE 11

1. Preface

This application note describes the sample software for Cyclic Redundancy Check (CRC).
This document helps the user check operation of a product under development and develop its program.

2. Technical Term

Term/Abbreviation	Definition
BSP	Board Support Package
CG	Clock Control and Operation Mode
CRC	Cyclic Redundancy Check
UART	Universal Asynchronous Receiver Transmitter

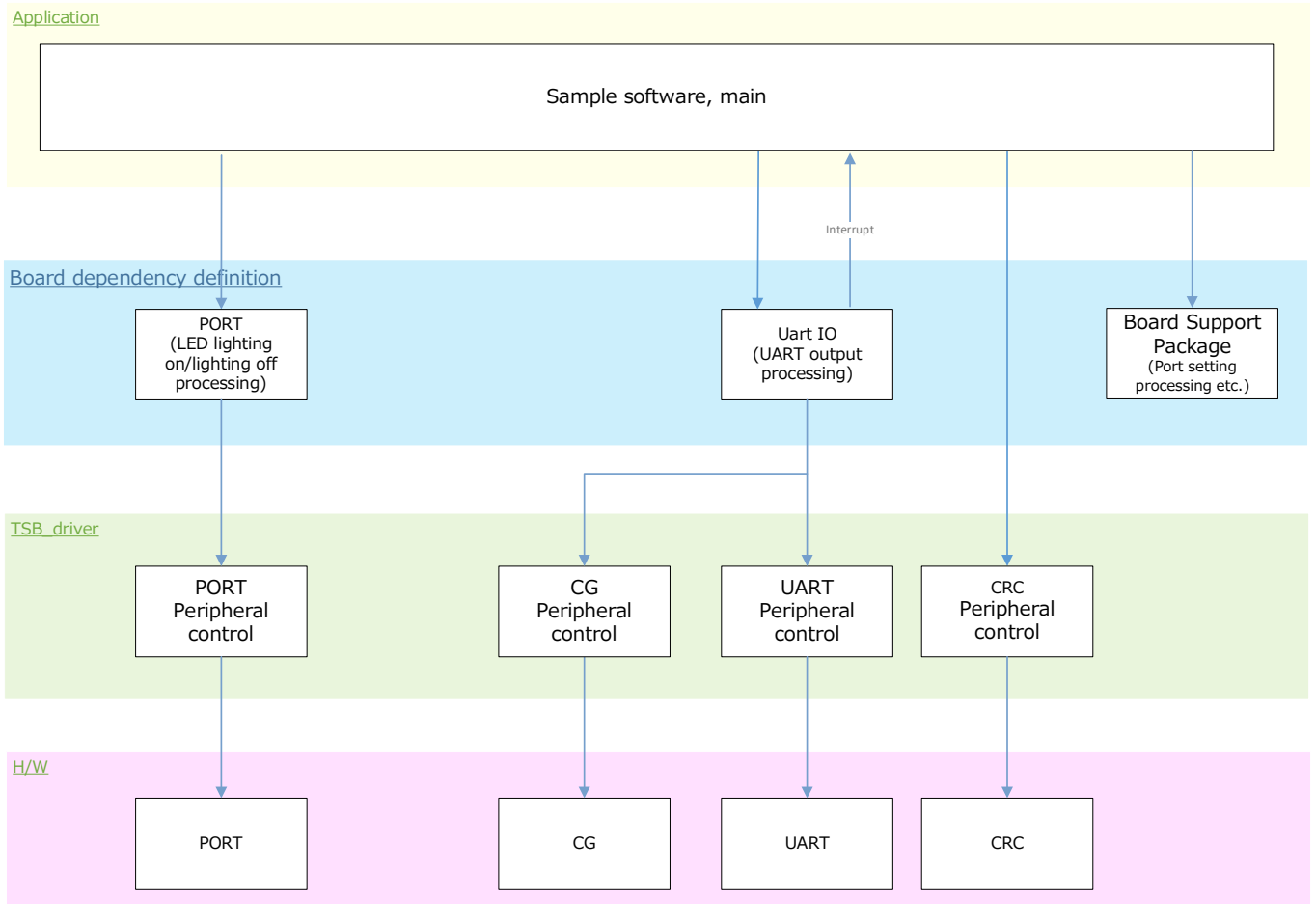
3. Reference Document

Document	Notes
Data sheet	Refer to the data sheet of MCU to be used.
Reference manual	Refer to the reference manual of each IP to be used.
Application note MCU User Guide	Refer to the MCU user guide to be used.

4. Target Sample Program

Sample Program	Outline
CRC	Sample program of CRC calculation function

5. Configuration Diagram



6. Sample Program: CRC

Using the calculation function of the CRC function, CRC calculation is performed for the data in the specified memory range, and the result is displayed by turning the LED on and off. This sample software that outputs the specified memory range and CRC calculation results to the terminal emulator.

6.1. Outlines of Operation

CRC calculation is performed by continuous input for the data in the specified memory range. Check the CRC calculation result, and if the result is normal, turn on BSP_LED_1. In case of abnormality, BSP_LED_2 lights up.

6.2. Function to Use

The functions to use are as follows:
For the Port assignment of each BSP channel, refer to the MCU user guide.

IP	Channel	Objective
UART	BSP_UART_1	Communication with the terminal emulator
PORT(LED)	BSP_LED_1	For operation check
	BSP_LED_2	For operation check

6.3. Interrupt to Use

Interrupt	Outlines
(Note1)	UART Transmission interrupt
(Note2)	UART Error interrupt

Note1: For SBK-M471, "INTSC0TX".
Note2: For SBK-M471, "INTSC0ERR".

6.4. Configuration

"main.c" configuration setting.

Configuration	Soft Definition	Current Value (Defaults)	Description
MEMORY_TOP	CRC_MEMORY CRC_RAM	CRC_MEMORY	CRC_MEMORY and CRC_RAM can be specified. (For CRC_MEMORY, the FLASH ROM address is specified as MEMORY_TOP, and for CRC_RAM, the RAM address is specified as MEMORY_TOP.)
MEMORY_SIZE	MEMORY_SIZE	9	Memory size (Unit: byte)
CRC data format	CRC16 CRC32	CRC16	Switching CRC16 and CRC32

6.5. Example of Terminal Emulator Output

6.5.1. Normal Operation

Outputs the CRC calculation result.

```
START = 0x00000E03
```

```
END   = 0x00000E0B
```

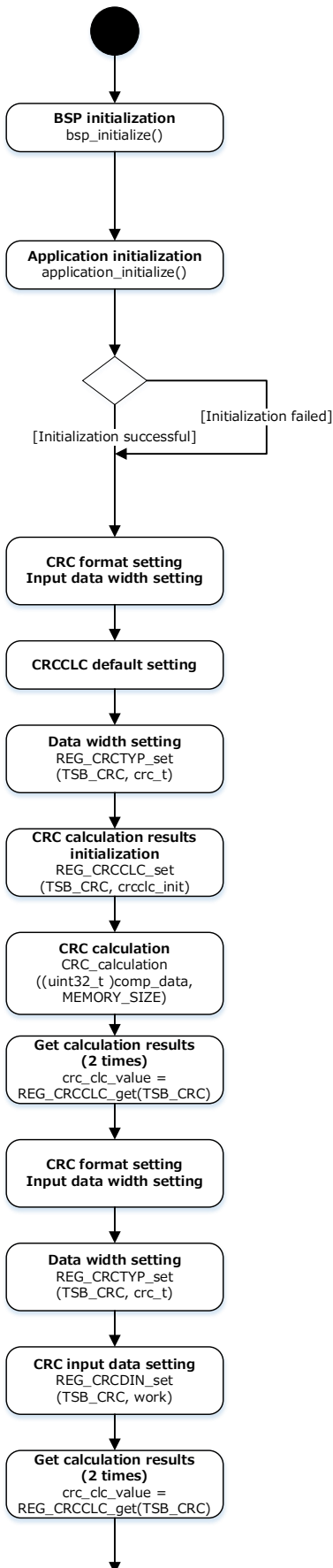
```
CRC   = 0x000029B1
```

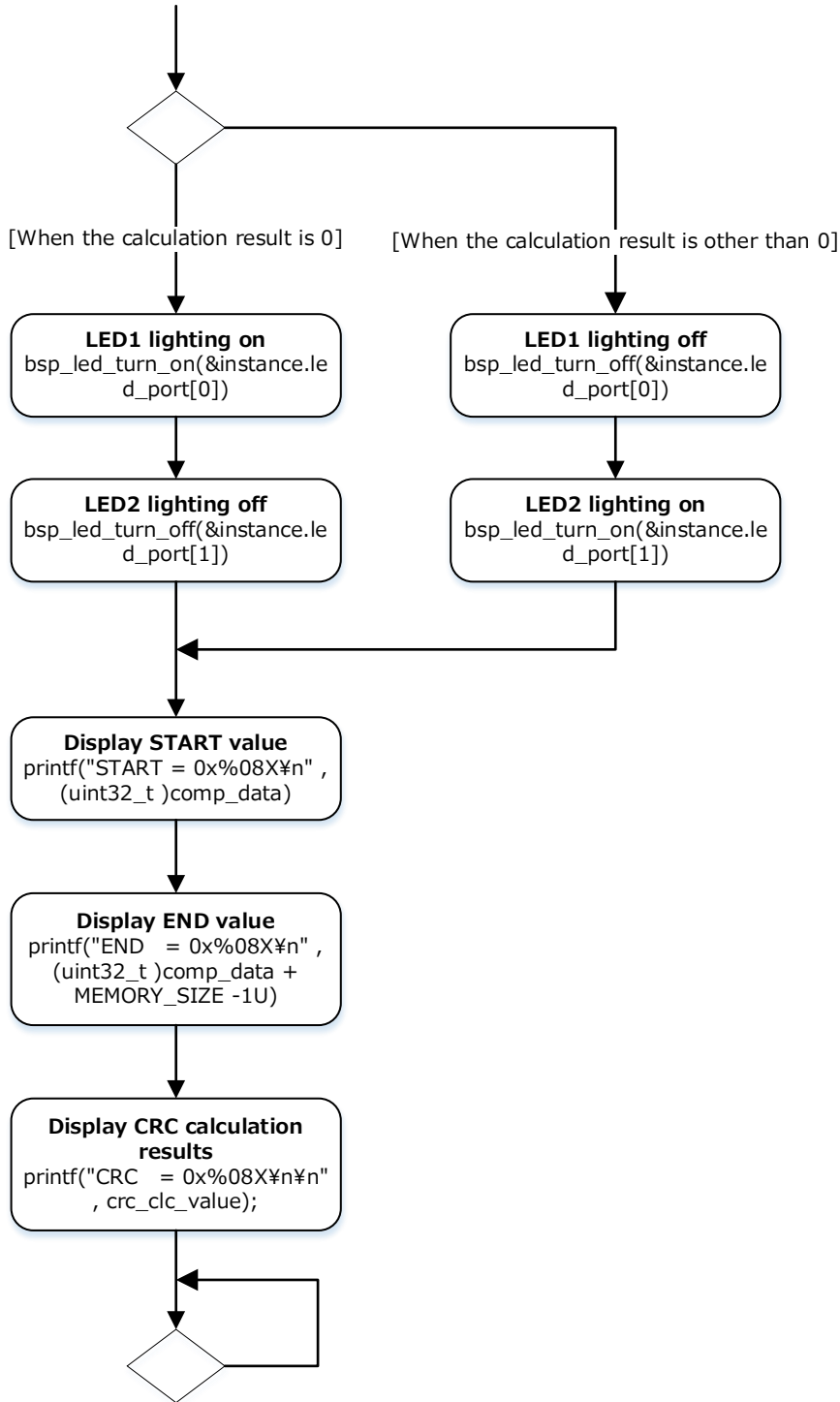
6.5.2. Case of Error Occurrence

Nothing.

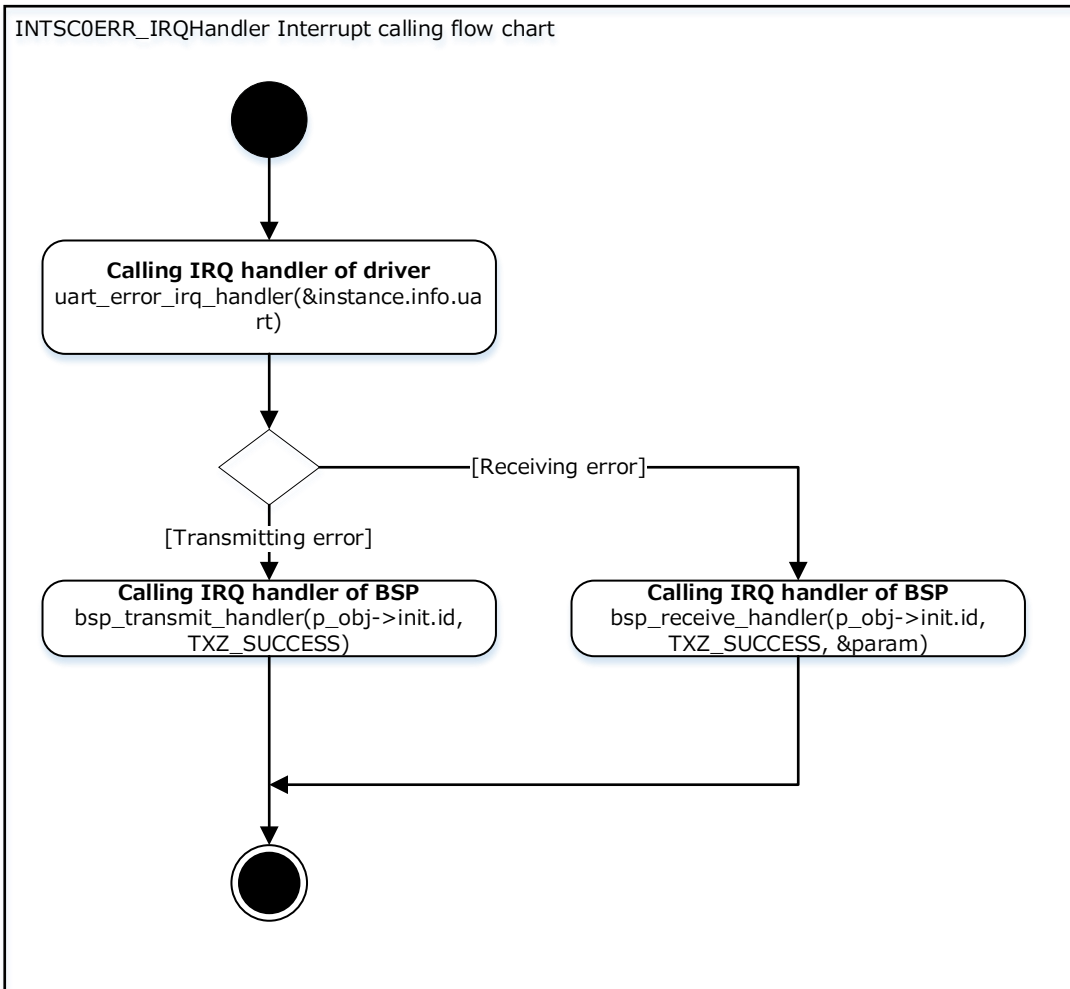
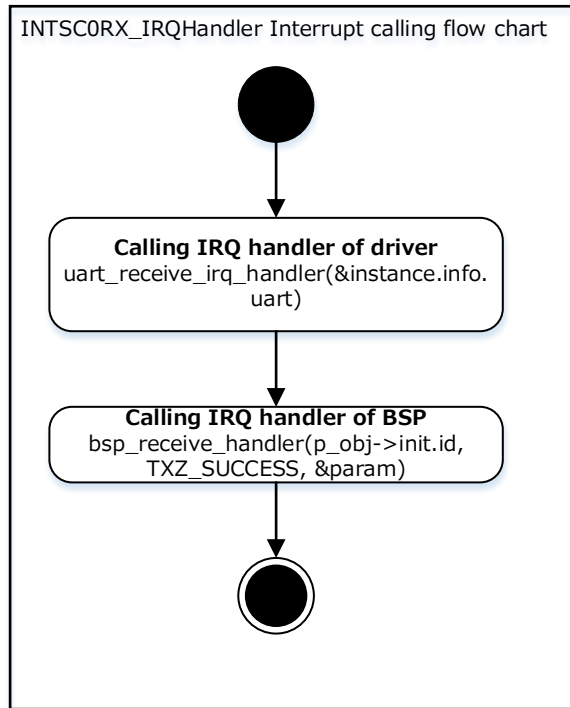
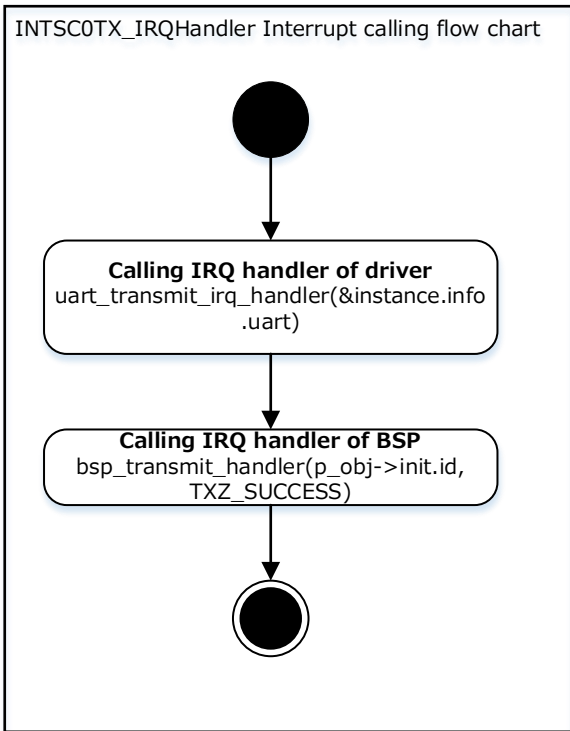
7. Activity diagram

7.1. main





7.2. Interrupt



8. Revision History

Revision	Date	Description
1.0	2025-01-20	First release

RESTRICTIONS ON PRODUCT USE

Toshiba Corporation and its subsidiaries and affiliates are collectively referred to as "TOSHIBA". Hardware, software and systems described in this document are collectively referred to as "Product".

- TOSHIBA reserves the right to make changes to the information in this document and related Product without notice.
- This document and any information herein may not be reproduced without prior written permission from TOSHIBA. Even with TOSHIBA's written permission, reproduction is permissible only if reproduction is without alteration/omission.
- Though TOSHIBA works continually to improve Product's quality and reliability, Product can malfunction or fail. Customers are responsible for complying with safety standards and for providing adequate designs and safeguards for their hardware, software and systems which minimize risk and avoid situations in which a malfunction or failure of Product could cause loss of human life, bodily injury or damage to property, including data loss or corruption. Before customers use the Product, create designs including the Product, or incorporate the Product into their own applications, customers must also refer to and comply with (a) the latest versions of all relevant TOSHIBA information, including without limitation, this document, the specifications, the data sheets and application notes for Product and the precautions and conditions set forth in the "TOSHIBA Semiconductor Reliability Handbook" and (b) the instructions for the application with which the Product will be used with or for. Customers are solely responsible for all aspects of their own product design or applications, including but not limited to (a) determining the appropriateness of the use of this Product in such design or applications; (b) evaluating and determining the applicability of any information contained in this document, or in charts, diagrams, programs, algorithms, sample application circuits, or any other referenced documents; and (c) validating all operating parameters for such designs and applications. **TOSHIBA ASSUMES NO LIABILITY FOR CUSTOMERS' PRODUCT DESIGN OR APPLICATIONS.**
- **PRODUCT IS NEITHER INTENDED NOR WARRANTED FOR USE IN EQUIPMENTS OR SYSTEMS THAT REQUIRE EXTRAORDINARILY HIGH LEVELS OF QUALITY AND/OR RELIABILITY, AND/OR A MALFUNCTION OR FAILURE OF WHICH MAY CAUSE LOSS OF HUMAN LIFE, BODILY INJURY, SERIOUS PROPERTY DAMAGE AND/OR SERIOUS PUBLIC IMPACT ("UNINTENDED USE").** Except for specific applications as expressly stated in this document, Unintended Use includes, without limitation, equipment used in nuclear facilities, equipment used in the aerospace industry, lifesaving and/or life supporting medical equipment, equipment used for automobiles, trains, ships and other transportation, traffic signaling equipment, equipment used to control combustions or explosions, safety devices, elevators and escalators, and devices related to power plant. **IF YOU USE PRODUCT FOR UNINTENDED USE, TOSHIBA ASSUMES NO LIABILITY FOR PRODUCT.** For details, please contact your TOSHIBA sales representative or contact us via our website.
- Do not disassemble, analyze, reverse-engineer, alter, modify, translate or copy Product, whether in whole or in part.
- Product shall not be used for or incorporated into any products or systems whose manufacture, use, or sale is prohibited under any applicable laws or regulations.
- The information contained herein is presented only as guidance for Product use. No responsibility is assumed by TOSHIBA for any infringement of patents or any other intellectual property rights of third parties that may result from the use of Product. No license to any intellectual property right is granted by this document, whether express or implied, by estoppel or otherwise.
- **ABSENT A WRITTEN SIGNED AGREEMENT, EXCEPT AS PROVIDED IN THE RELEVANT TERMS AND CONDITIONS OF SALE FOR PRODUCT, AND TO THE MAXIMUM EXTENT ALLOWABLE BY LAW, TOSHIBA (1) ASSUMES NO LIABILITY WHATSOEVER, INCLUDING WITHOUT LIMITATION, INDIRECT, CONSEQUENTIAL, SPECIAL, OR INCIDENTAL DAMAGES OR LOSS, INCLUDING WITHOUT LIMITATION, LOSS OF PROFITS, LOSS OF OPPORTUNITIES, BUSINESS INTERRUPTION AND LOSS OF DATA, AND (2) DISCLAIMS ANY AND ALL EXPRESS OR IMPLIED WARRANTIES AND CONDITIONS RELATED TO SALE, USE OF PRODUCT, OR INFORMATION, INCLUDING WARRANTIES OR CONDITIONS OF MERCHANTABILITY, FITNESS FOR A PARTICULAR PURPOSE, ACCURACY OF INFORMATION, OR NONINFRINGEMENT.**
- Do not use or otherwise make available Product or related software or technology for any military purposes, including without limitation, for the design, development, use, stockpiling or manufacturing of nuclear, chemical, or biological weapons or missile technology products (mass destruction weapons). Product and related software and technology may be controlled under the applicable export laws and regulations including, without limitation, the Japanese Foreign Exchange and Foreign Trade Law and the U.S. Export Administration Regulations. Export and re-export of Product or related software or technology are strictly prohibited except in compliance with all applicable export laws and regulations.
- Please contact your TOSHIBA sales representative for details as to environmental matters such as the RoHS compatibility of Product. Please use Product in compliance with all applicable laws and regulations that regulate the inclusion or use of controlled substances, including without limitation, the EU RoHS Directive. **TOSHIBA ASSUMES NO LIABILITY FOR DAMAGES OR LOSSES OCCURRING AS A RESULT OF NONCOMPLIANCE WITH APPLICABLE LAWS AND REGULATIONS.**

Toshiba Electronic Devices & Storage Corporation

<https://toshiba.semicon-storage.com/>