

10kW 3-Phase AC 400V Input PFC Converter

Reference Guide

RD263-RGUIDE-02

Toshiba Electronic Devices & Storage Corporation

Table of Contents

1. Introduction.....	3
2. Appearance and Specifications	4
2.1. Specifications	4
2.2. Block Diagram	4
2.3. Appearance.....	5
2.4. PCB Component Layout.....	6
3. Schematic, Bill of Materials, and PCB Pattern Diagram .	8
3.1. Schematic.....	8
3.2. Bill of Materials	8
3.3. PCB Pattern Diagram	8
4. Operating Procedure	12
4.1. Wiring Connection.....	12
4.2. Connecting to an External Device	12
4.3. Start and Stop Procedures	13
4.4. Evaluation Precautions (Electric Shock, Burn Injury, etc.)	13
5. Power Characteristics	14
5.1. Efficiency	14

1. Introduction

This reference guide describes the specifications, usage, and characteristics of the 10kW 3-Phase AC 400V Input PFC Power Supply (hereafter referred to as “this design”).

This design can provide 10kW at the output DC 750V. 3-phase AC power supply (312V to 528V) is input, and DC 750 V is output in a 3-phase totem pole configuration employing a 1200V SiC MOSFET. It can be applied to various industrial equipment with 3-phase AC power input, such as charging stations for electric vehicles.

The PFC stage uses our latest 1200V SiC MOSFET [TW060N120C](#), which contributes to low power loss. The [TLP5214A](#) gate driver photocoupler is used for isolated gate driving of the MOSFETs, and the [TLP7920](#) isolation amplifier is used for isolated sensing of the input and output voltages.

2. Appearance and Specifications

2.1. Specifications

Table 2.1 lists the input and output characteristics of this design.

Table 2.1 10kW 3-Phase AC 400V Input PFC Power Supply Specifications

Parameters	Conditions	Minimum	Typical	Maximum	Unit
Input Characteristics					
AC input voltage (line-to-line rms)		312		528	V
AC Input frequency		49.8		60.3	Hz
AC input current (rms)				19.3	A
Output Characteristics					
Output voltage		742	750	758	V
Output current				13.5	A
Output power				10000	W
Switching frequency			50		kHz

2.2. Block Diagram

Fig. 2.1 shows a block diagram to understand the function.

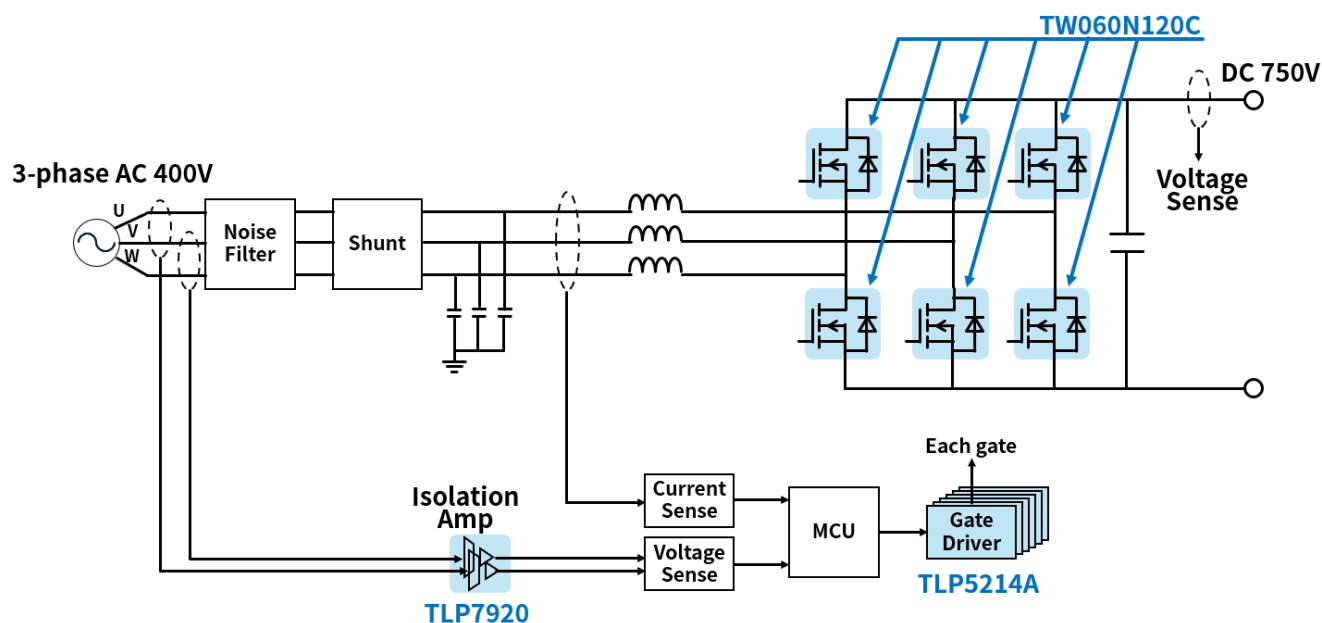


Fig. 2.1 Block Diagram

2.3. Appearance

Fig. 2.2 shows the appearance of this design.

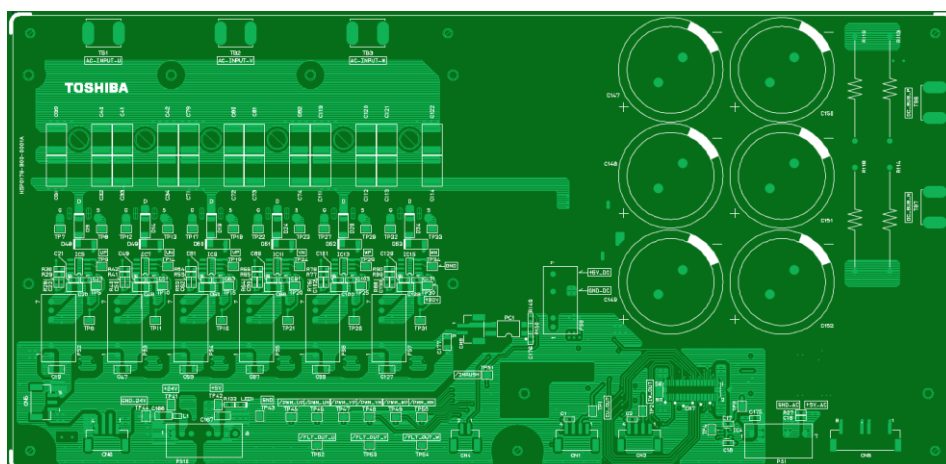


Fig. 2.2 External View of This Design

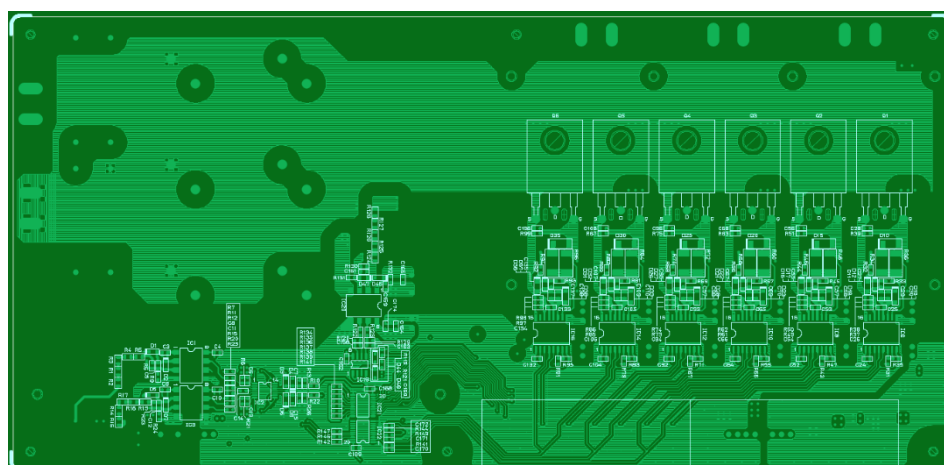
External Dimensions : 750mm x 450mm x 190mm

2.4. PCB Component Layout

Fig. 2.3 shows the component layout of the main circuit board, Fig. 2.4 shows the component layout of the control board.



<Front>



<Back>

Fig. 2.3 Component Layout of Main Circuit Board



Fig. 2.4 Component Layout of Control Board

3. Schematic, Bill of Materials, and PCB Pattern Diagram

3.1. Schematic

Refer to following files:

Main circuit board: RD263-SCHEMATIC1-xx.pdf

Control board: RD044-SCHEMATIC2-xx.pdf

(xx is the revision number.)

3.2. Bill of Materials

Refer to following files:

Main circuit board: RD263-BOM1-xx.pdf

Control board: RD044-BOM2-xx.pdf

(xx is the revision number.)

3.3. PCB Pattern Diagram

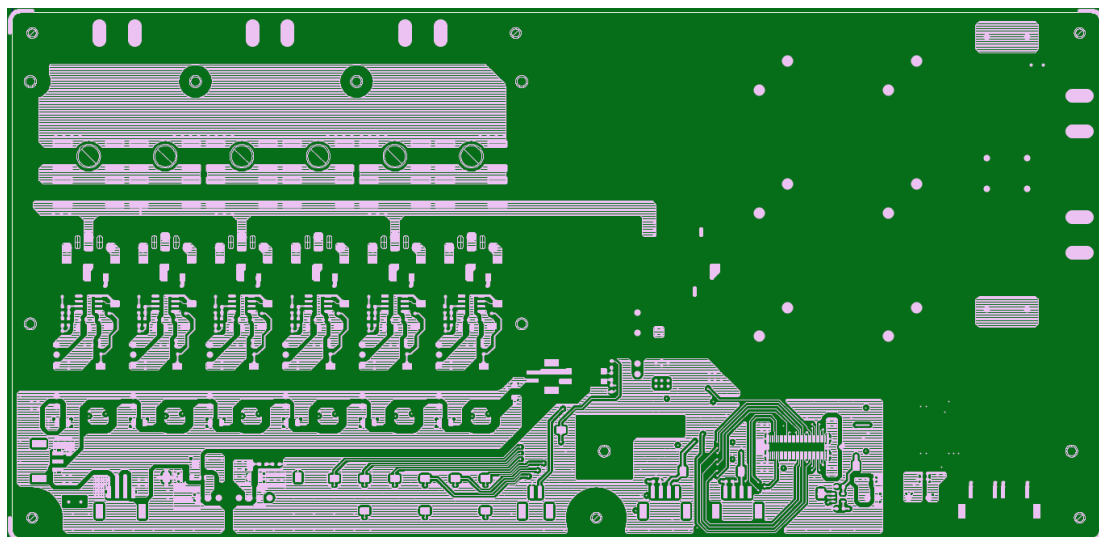
Fig. 3.1 shows PCB pattern diagram of the main circuit board, Fig. 3.2 shows PCB pattern diagram of the control board.

Refer to following files:

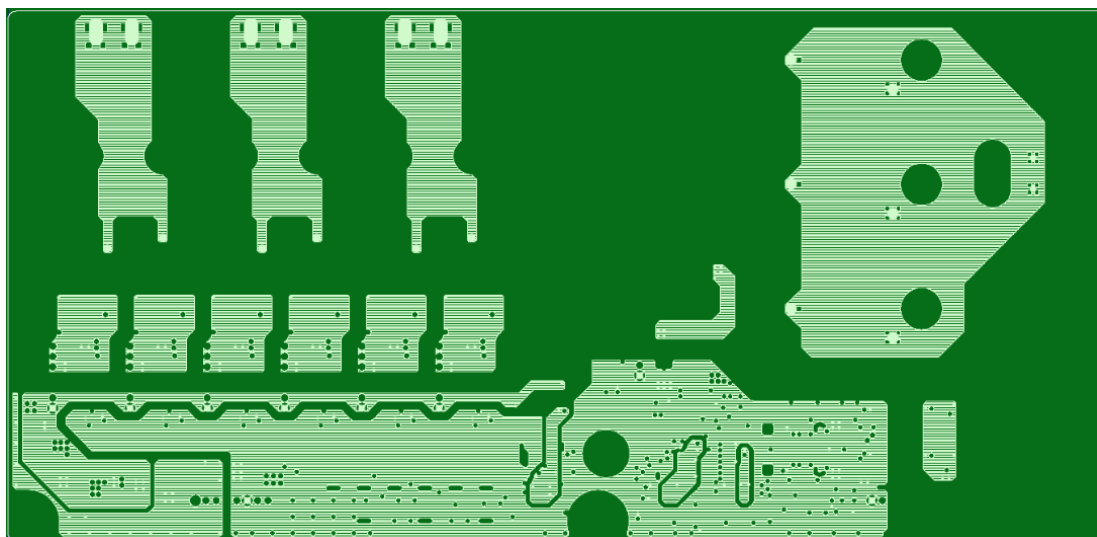
Main circuit board: RD263-LAYER1-xx.pdf

Control board: RD044-LAYER2-xx.pdf

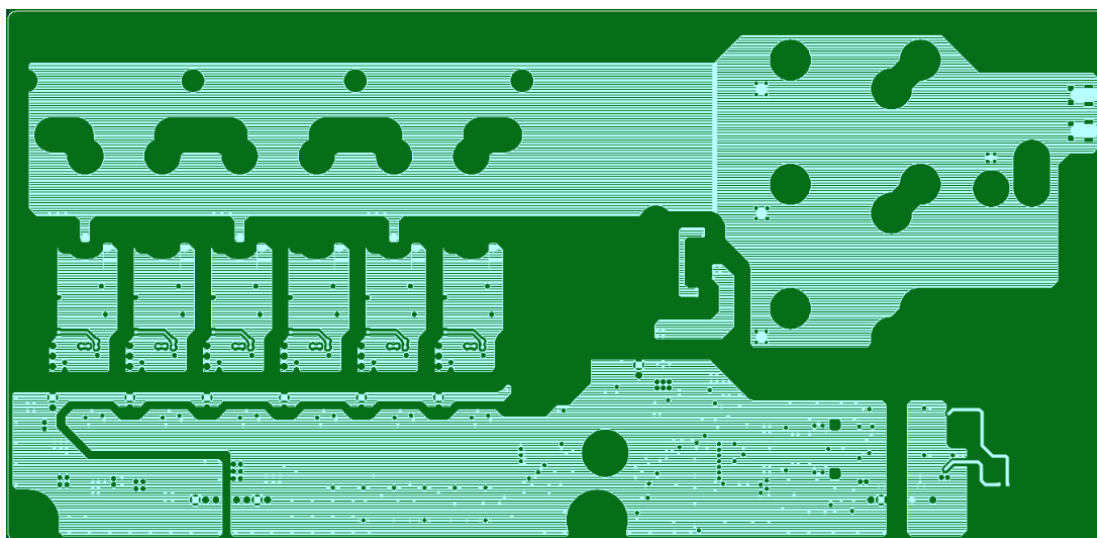
(xx is the revision number.)



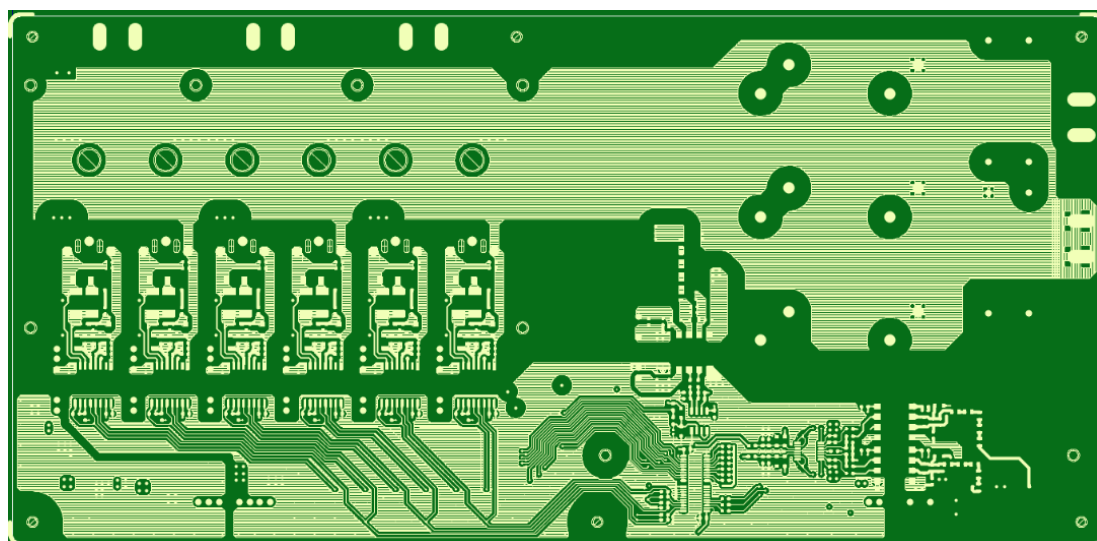
<Layer1, Front>



<Layer2>

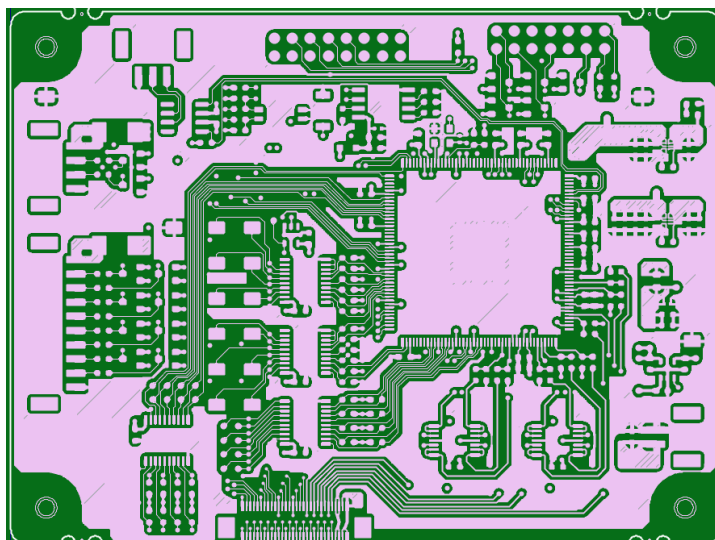


<Layer3>

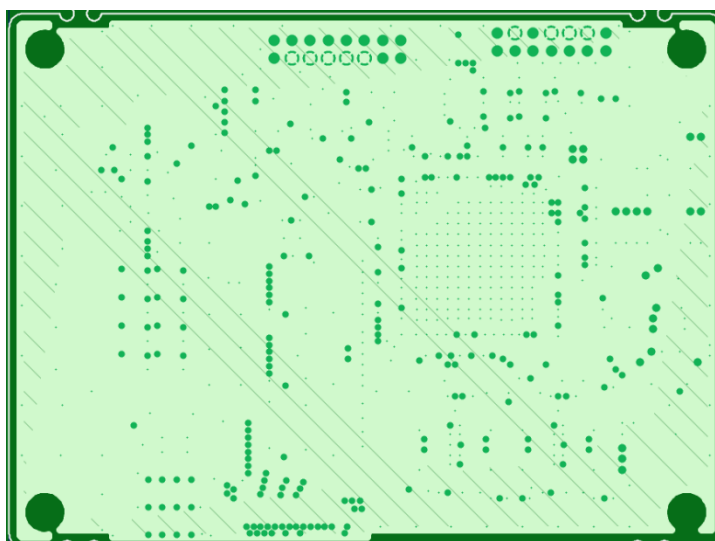


<Layer4, Back>

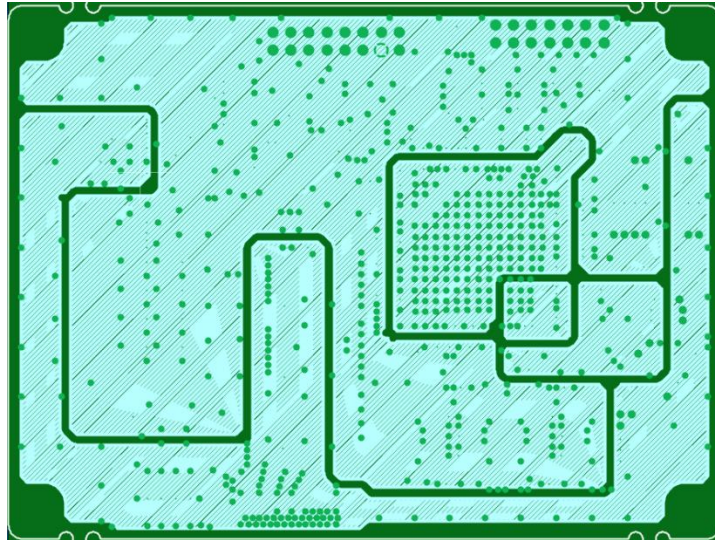
Fig. 3.1 Main Circuit Board Pattern Diagram



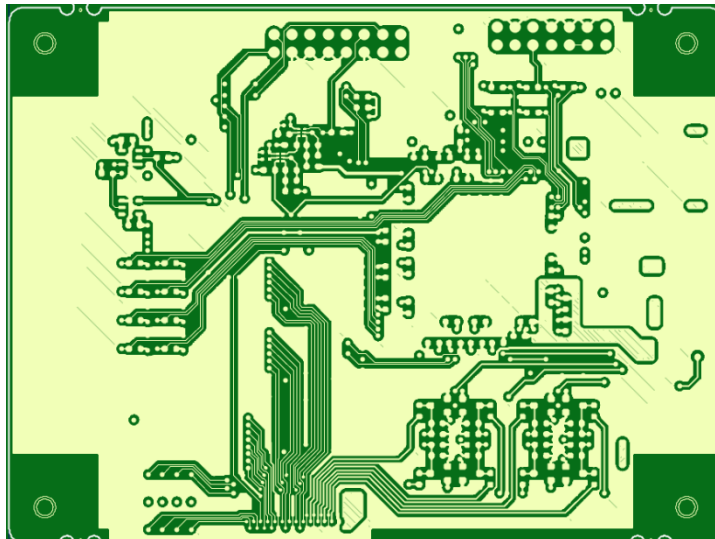
<Layer1, Front>



<Layer2>



<Layer3>



<Layer4, Back>

Fig. 3.2 Control Board Pattern Diagram

4. Operating Procedure

4.1. Wiring Connection

Prepare the wiring connections for each part of the power supply according to the connection diagram shown in Fig. 4.1.

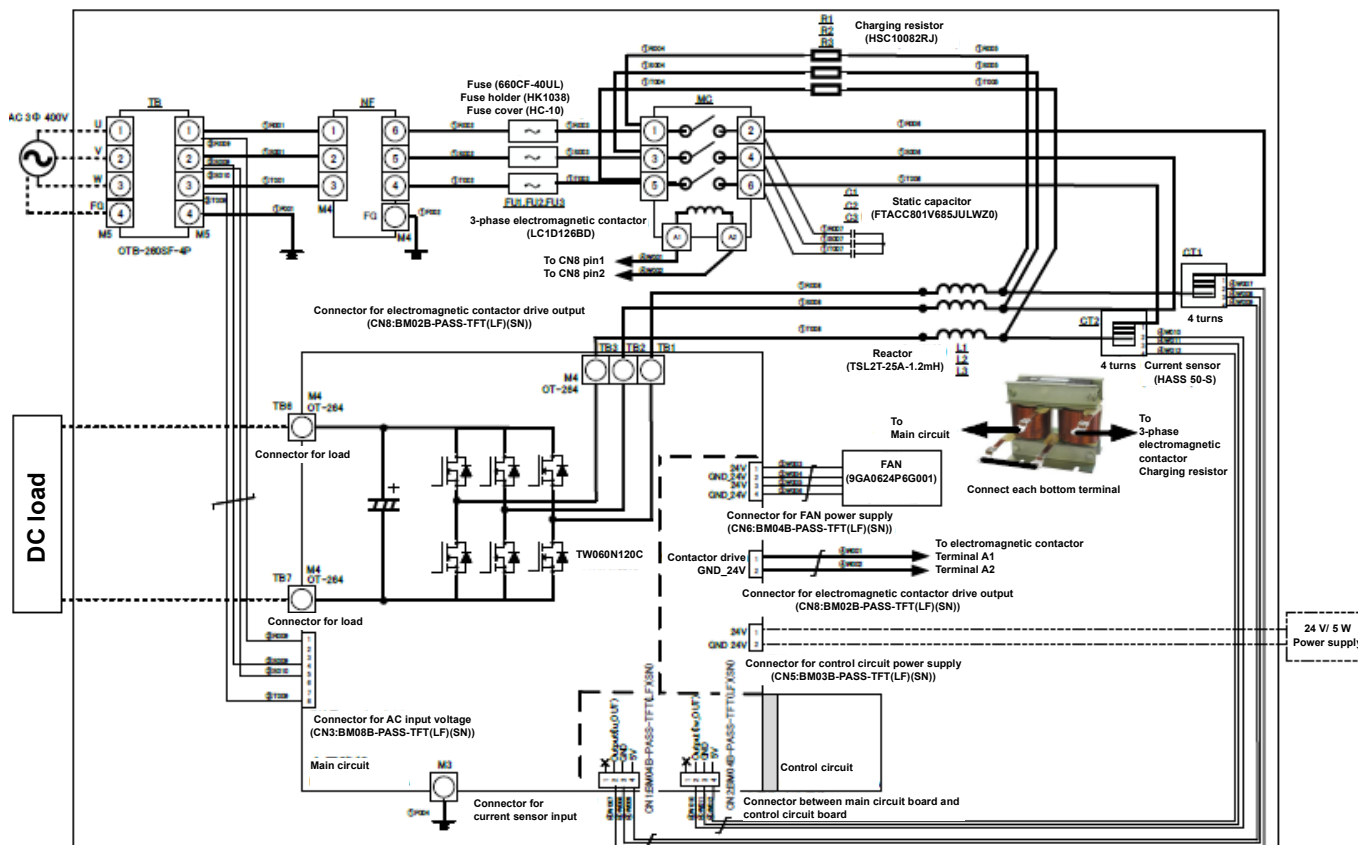


Fig. 4.1 Wiring Connection Diagram

4.2. Connecting to an External Device

Connect a stabilized power supply that outputs 3-phase AC to the input terminal of this design and a load unit to the output terminal. Also, connect the 24V power supply for the control circuit to the control board.

4.3. Start and Stop Procedures

Before starting the power supply, check that the input and output pin voltages are all 0V.

[Power-up Procedure]

1. Turn on the 24V power supply for the control circuit.
2. Turn on the stabilized power supply.

[Power-off Procedure]

1. Shut down the stabilized power supply.
2. Stop the 24V power supply for the control circuit.

4.4. Evaluation Precautions (Electric Shock, Burn Injury, etc.)

Be careful of electric shock when connecting a stabilized power supply. Do not touch each part of the power supply directly while the power is on. Be very careful when observing the waveform. Even after this power supply is stopped, there is a risk of electric shock due to the remained charge of various capacitors. Confirm that the voltage of each part has decreased sufficiently before touching the board.

In addition, the semiconductor or inductor of this power supply generates heat according to the load current. Do not touch each part of the power supply while the power supply is in operation, as there is a risk of burns.

5. Power Characteristics

The power supply efficiency measurement results of this design are described below.

5.1. Efficiency

Showing this power supply efficiency evaluation result with stabilized power supply output of 400V / 440V / 480V.

Fig. 5.1 shows the power supply efficiency measurement results of this design. The output voltage of the AC stabilized power supply is set to 400V and measured. The efficiency is as high as 97.9% when the load power is 100%.

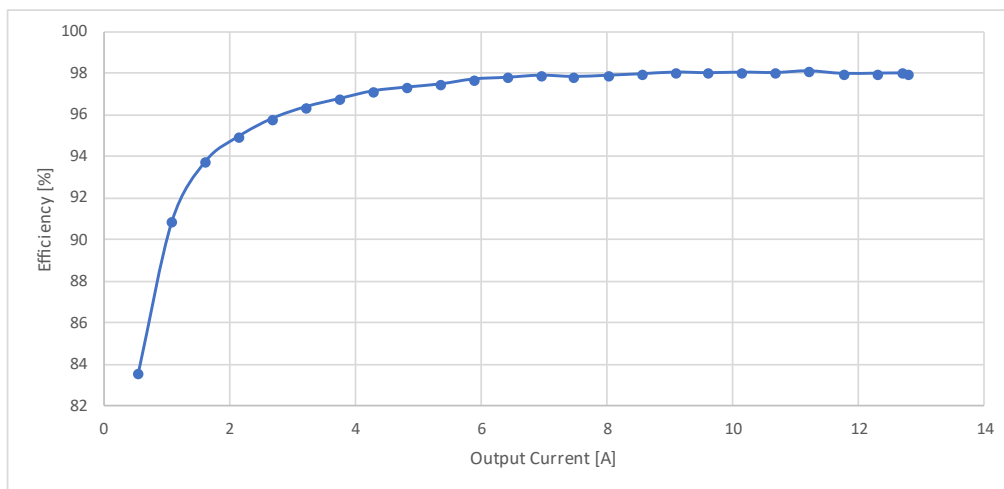


Fig. 5.1 Efficiency Measurement Results ($V_{in} = 400V$)

Fig. 5.2 shows the output voltage of the AC stabilized power supply is set to 440V and measured. The efficiency is as high as 98.3% when the load power is 100%.

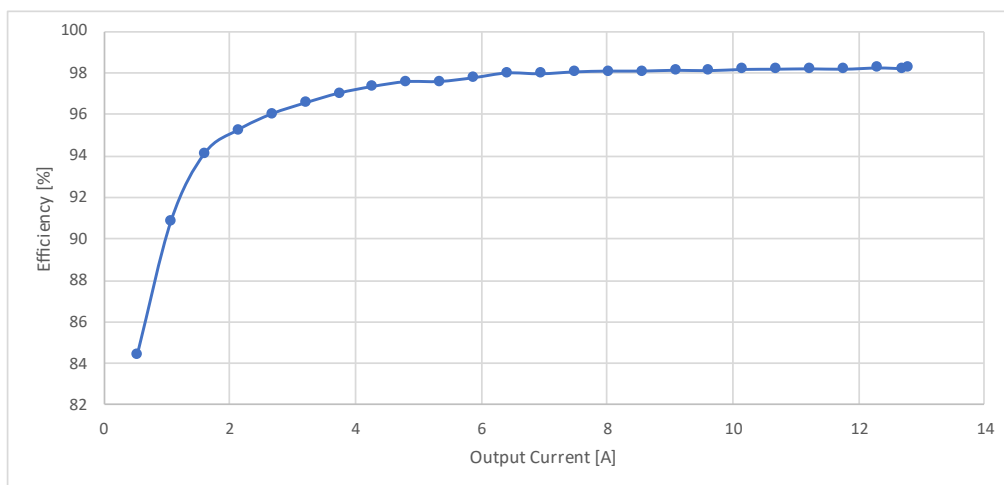


Fig. 5.2 Efficiency Measurement Results ($V_{in} = 440V$)

Fig. 5.3 shows the output voltage of the AC stabilized power supply is set to 480V and measured. The efficiency is as high as 98.4% when the load power is 100%.

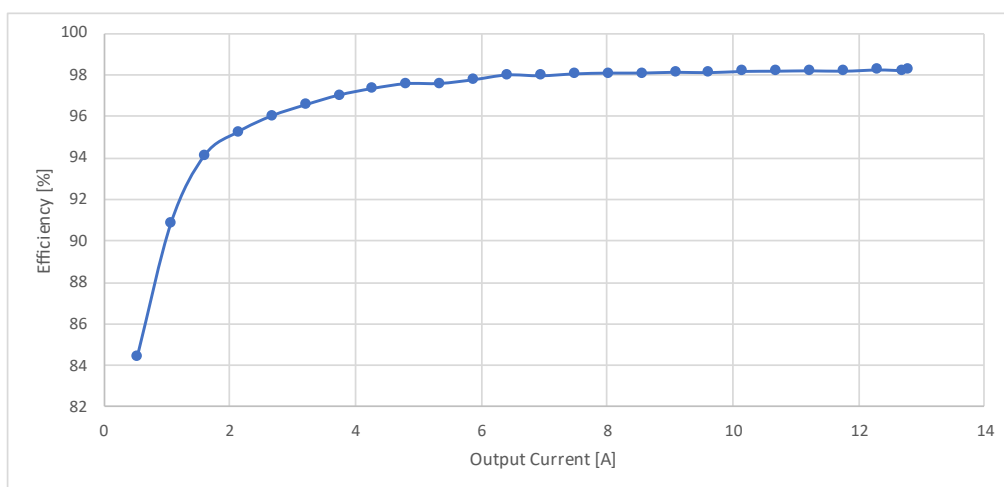


Fig. 5.3 Efficiency Measurement Results ($V_{in} = 480V$)

Terms of Use

This terms of use is made between Toshiba Electronic Devices and Storage Corporation ("We") and Customer who downloads or uses this Reference Design. Customer shall comply with this terms of use. This Reference Design means all documents and data in order to design electronics applications on which our semiconductor device is embedded.

Section 1. Restrictions on usage

1. This Reference Design is provided solely as reference data for designing electronics applications. Customer shall not use this Reference Design for any other purpose, including without limitation, verification of reliability.
2. Customer shall not use this Reference Design for sale, lease or other transfer.
3. Customer shall not use this Reference Design for evaluation in high or low temperature, high humidity, or high electromagnetic environments.
4. This Reference Design shall not be used for or incorporated into any product or system whose manufacture, use, or sale is prohibited under any applicable laws or regulations.

Section 2. Limitations

1. We reserve the right to make changes to this Reference Design without notice.
2. This Reference Design should be treated as a reference only. WE ARE NOT RESPONSIBLE FOR ANY INCORRECT OR INCOMPLETE DATA AND INFORMATION.
3. Semiconductor devices can malfunction or fail. When designing electronics applications by referring to this Reference Design, Customer is responsible for complying with safety standards and for providing adequate designs and safeguards for their hardware, software and systems which minimize risk and avoid situations in which a malfunction or failure of semiconductor devices could cause loss of human life, bodily injury or damage to property, including data loss or corruption. Customer must also refer to and comply with the latest versions of all relevant our information, including without limitation, specifications, data sheets and application notes for semiconductor devices, as well as the precautions and conditions set forth in the "Semiconductor Reliability Handbook".
4. Designing electronics applications by referring to this Reference Design, Customer must evaluate the whole system sufficiently. Customer is solely responsible for applying this Reference Design to Customer's own product design or applications. WE ASSUME NO LIABILITY FOR CUSTOMER'S PRODUCT DESIGN OR APPLICATIONS.
5. WE SHALL NOT BE RESPONSIBLE FOR ANY INFRINGEMENT OF PATENTS OR ANY OTHER INTELLECTUAL PROPERTY RIGHTS OF THIRD PARTIES THAT MAY RESULT FROM THE USE OF THIS REFERENCE DESIGN. NO LICENSE TO ANY INTELLECTUAL PROPERTY RIGHT IS GRANTED BY THIS TERMS OF USE, WHETHER EXPRESS OR IMPLIED, BY ESTOPPEL OR OTHERWISE.
6. THIS REFERENCE DESIGN IS PROVIDED "AS IS". WE (a) ASSUME NO LIABILITY WHATSOEVER, INCLUDING WITHOUT LIMITATION, INDIRECT, CONSEQUENTIAL, SPECIAL, OR INCIDENTAL DAMAGES OR LOSS, INCLUDING WITHOUT LIMITATION, LOSS OF PROFITS, LOSS OF OPPORTUNITIES, BUSINESS INTERRUPTION AND LOSS OF DATA, AND (b) DISCLAIM ANY AND ALL EXPRESS OR IMPLIED WARRANTIES AND CONDITIONS RELATED TO THIS REFERENCE DESIGN, INCLUDING WITHOUT LIMITATION, WARRANTIES OR CONDITIONS OF FUNCTION AND WORKING, WARRANTIES OF MERCHANTABILITY, FITNESS FOR A PARTICULAR PURPOSE, ACCURACY OF INFORMATION, OR NONINFRINGEMENT.

Section 3. Terms and Termination

It is assumed that Customer agrees to any and all this terms of use if Customer downloads or uses this Reference Design. We may, at its sole and exclusive discretion, change, alter, modify, add, and/or remove any part of this terms of use at any time without any prior notice. We may terminate this terms of use at any time and without any cause. Upon termination of this terms of use, Customer shall eliminate this Reference Design. Furthermore, upon our request, Customer shall submit to us a written confirmation to prove elimination of this Reference Design.

Section 4. Export Control

Customer shall not use or otherwise make available this Reference Design for any military purposes, including without limitation, for the design, development, use, stockpiling or manufacturing of nuclear, chemical, or biological weapons or missile technology products (mass destruction weapons). This Reference Design may be controlled under the applicable export laws and regulations including, without limitation, the Japanese Foreign Exchange and Foreign Trade Act and the U.S. Export Administration Regulations. Export and re-export of this Reference Design is strictly prohibited except in compliance with all applicable export laws and regulations.

Section 5. Governing Laws

This terms of use shall be governed and construed by laws of Japan, without reference to conflict of law principle.

Section 6. Jurisdiction

Unless otherwise specified, Tokyo District Court in Tokyo, Japan shall be exclusively the court of first jurisdiction for all disputes under this terms of use.