

Application Note

TSPI_TARGET_RECEIVE

Arm and Keil are registered trademarks of Arm Limited (or its subsidiaries) in the US and/or elsewhere.

All other company names, product names, and service names mentioned herein may be trademarks of their respective companies.

Table of Contents

Table of Contents.....2

1. Preface3

2. Technical Term3

3. Reference Document3

4. Target Sample Program4

5. Configuration Diagram4

6. Sample Program: TSPI_TARGET_RECEIVE.....5

 6.1. Outlines of Operation..... 5

 6.2. Function to Use..... 5

 6.3. Interrupt to Use 5

 6.4. Configuration..... 6

 6.5. Example of Terminal Emulator Output 6

 6.6. DMAC Communication Setting 6

7. Activity diagram..... 7

 7.1. main 7

 7.2. Interrupt..... 11

8. Revision History 13

RESTRICTIONS ON PRODUCT USE 14

1. Preface

This application note describes the sample software TSPI_TARGET_RECEIVE using Serial Peripheral Interface (TSPI).

This document helps the user check operation of a product under development and develop its program.

2. Technical Term

Term/Abbreviation	Definition
BSP	Board Support Package
CG	Clock Control and Operation Mode
CRC	Cyclic Redundancy Check
DMA	Direct Memory Access Controller
Timer	T32A:32-bit Timer Event Counter
TSPI	Serial Peripheral Interface

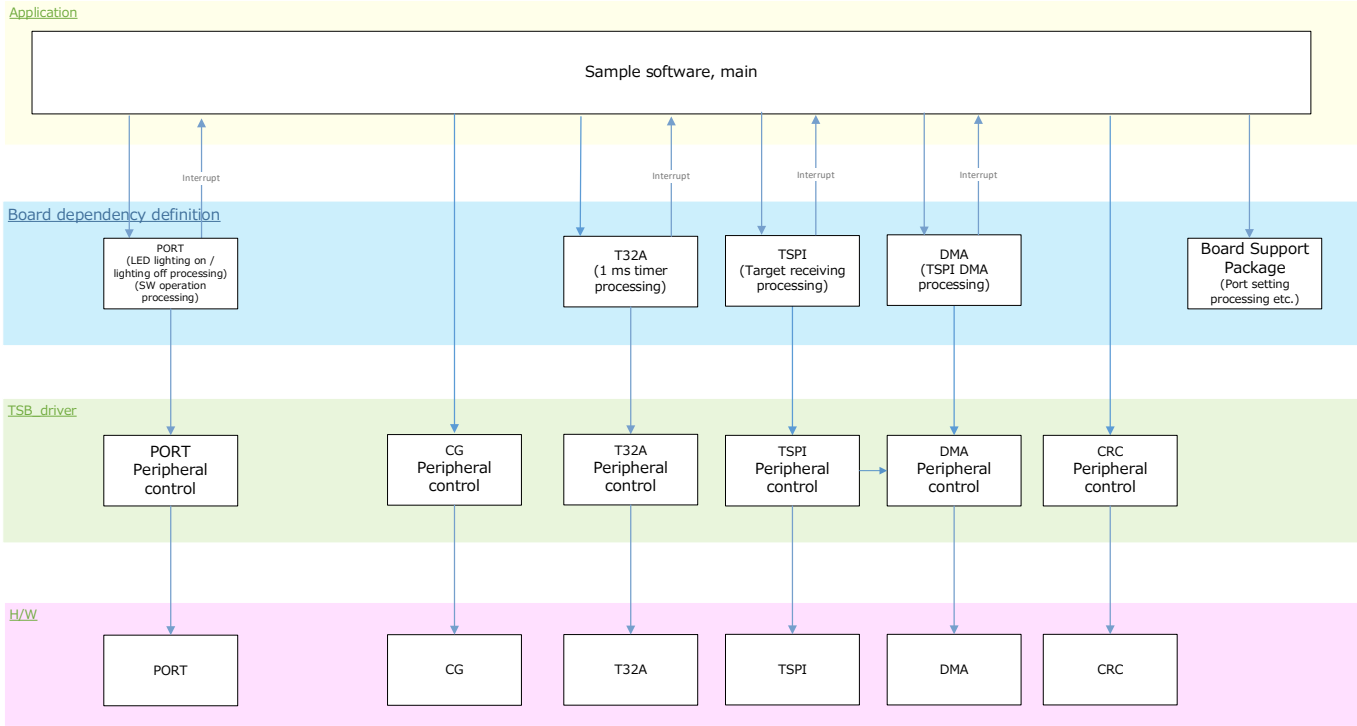
3. Reference Document

Document	Notes
Data sheet	Refer to the data sheet of MCU to be used.
Reference manual	Refer to the reference manual of each IP to be used.
Application note MCU User Guide	Refer to the MCU user guide to be used.

4. Target Sample Program

Sample Program	Outline
TSPI_TARGET_RECEIVE	Sample program of SPI function (Target Receive)

5. Configuration Diagram



6. Sample Program: TSPI_TARGET_RECEIVE

This sample software that uses the Target receive processing function of the SPI communication function to enter the reception waiting state when the switch is pressed, and switches the LED turn on / turn off each time data receive is completed.

6.1. Outlines of Operation

Turns off BSP_LED_2, BSP_LED_3, and BSP_LED_4.

When BSP_PSW_1 is pressed, BSP_LED_3 and BSP_LED_4 are turned off and data for the data size is received. The data that exceeds the data size will be discarded.

Switches the lighting status (turn on / turn off) of BSP_LED_2.

When SPI read error occurs, BSP_LED_3 is turn on.

When the CRC value of the received data and the calculated CRC value do not match, BSP_LED_4 is turn on.

6.2. Function to Use

The functions to use are as follows:

For the Port assignment of each BSP channel, refer to the MCU user guide.

IP	Channel	Objective
TSPI	BSP_TSPI_1	SPI communication
T32A	BSP_T32A_TIMER_1	Interval timer
PORT (Push-Switch)	BSP_PSW_1	Event trigger
PORT (LED)	BSP_LED_2	For operation check
	BSP_LED_3	For operation check
	BSP_LED_4	For operation check

6.3. Interrupt to Use

Interrupt	Outlines
(Note1)	T32A Timer A Timer counter increment every 1ms
(Note2)	SPI receive interrupt
(Note3)	SPI error interrupt
INTDMAATC	DMA transmit end interrupt
INTDMAAERR	DMA error interrupt

Note1: For SBK-M471 and AdBun-M3HQA, "INTT32A00AC"

Note2: For SBK-M471, "INTSC0RX"

For AdBun-M3HQA, "INTT1RX"

Note3: For SBK-M471, "INTSC0ERR"

Fore AdBun-M3HQA, "INTT1ERR"

6.4. Configuration

Configuration setting.

Configuration	Soft Definition Name	Current Value (Defaults)	Description
Data size	BSP_DATA_LENGTH	12	Data size (unit: byte) Compilation switch (Note1): Be switched by the BSP_CHK_CODE setting.
Check CODE	BSP_CHK_CODE	BSP_CHK_CODE_CRC16 6	BSP_CHK_CODE_CRC16 and BSP_CHK_CODE_CRC32 can be switched
Communication Control	BSP_REQUEST_MODE	BSP_FIFO_MODE	BSP_FIFO_MODE and BSP_DMA_MODE can be switched.
Send Fill Level Setting	BSP_RX_FILL_LEVEL	4	Set to RIL in TSPIxCR2

Note1: When BSP_CHK_CODE_CRC16, 12byte.
When BSP_CHK_CODE_CRC32, 14byte.

6.5. Example of Terminal Emulator Output

Nothing.

6.6. DMAC Communication Setting

Startup Factors and Transfer Mode

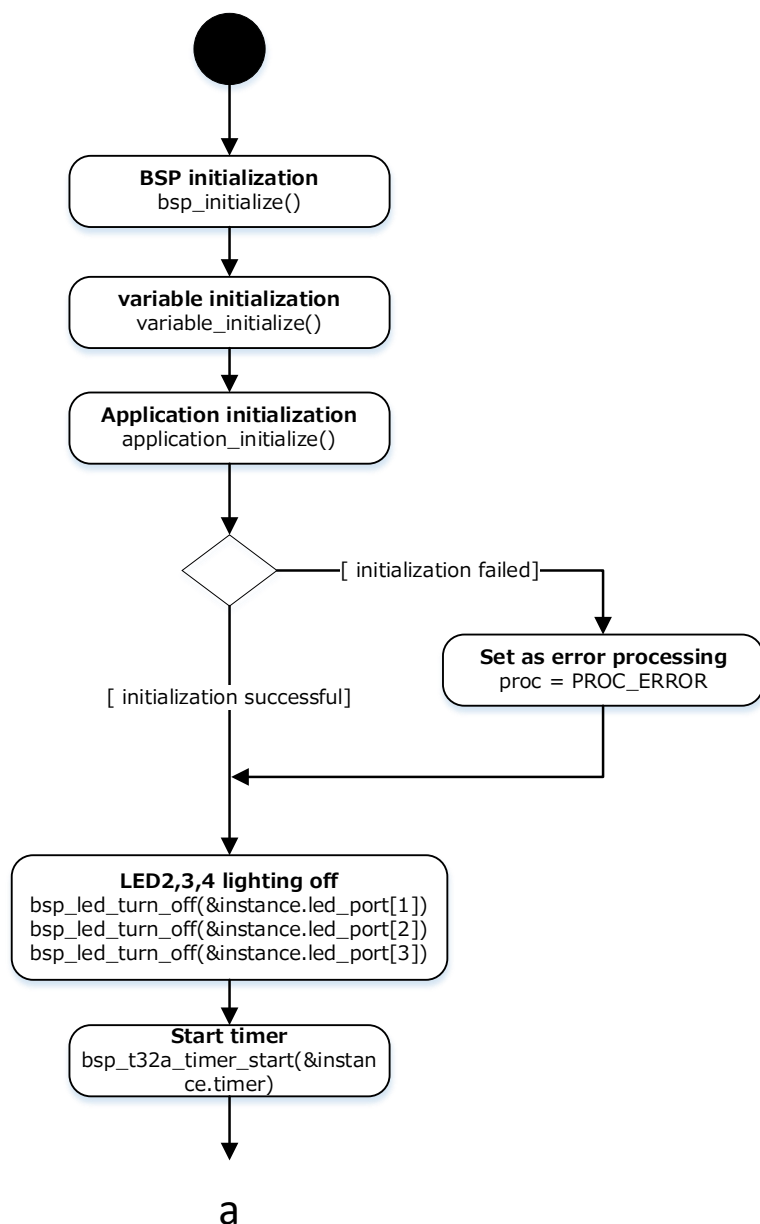
Configuration	Description
Startup Factors	DMA Request from TSPI Driver (Request Based on FIFO level)
Transfer Mode	Singel Transfer/Unit Normal Transfer

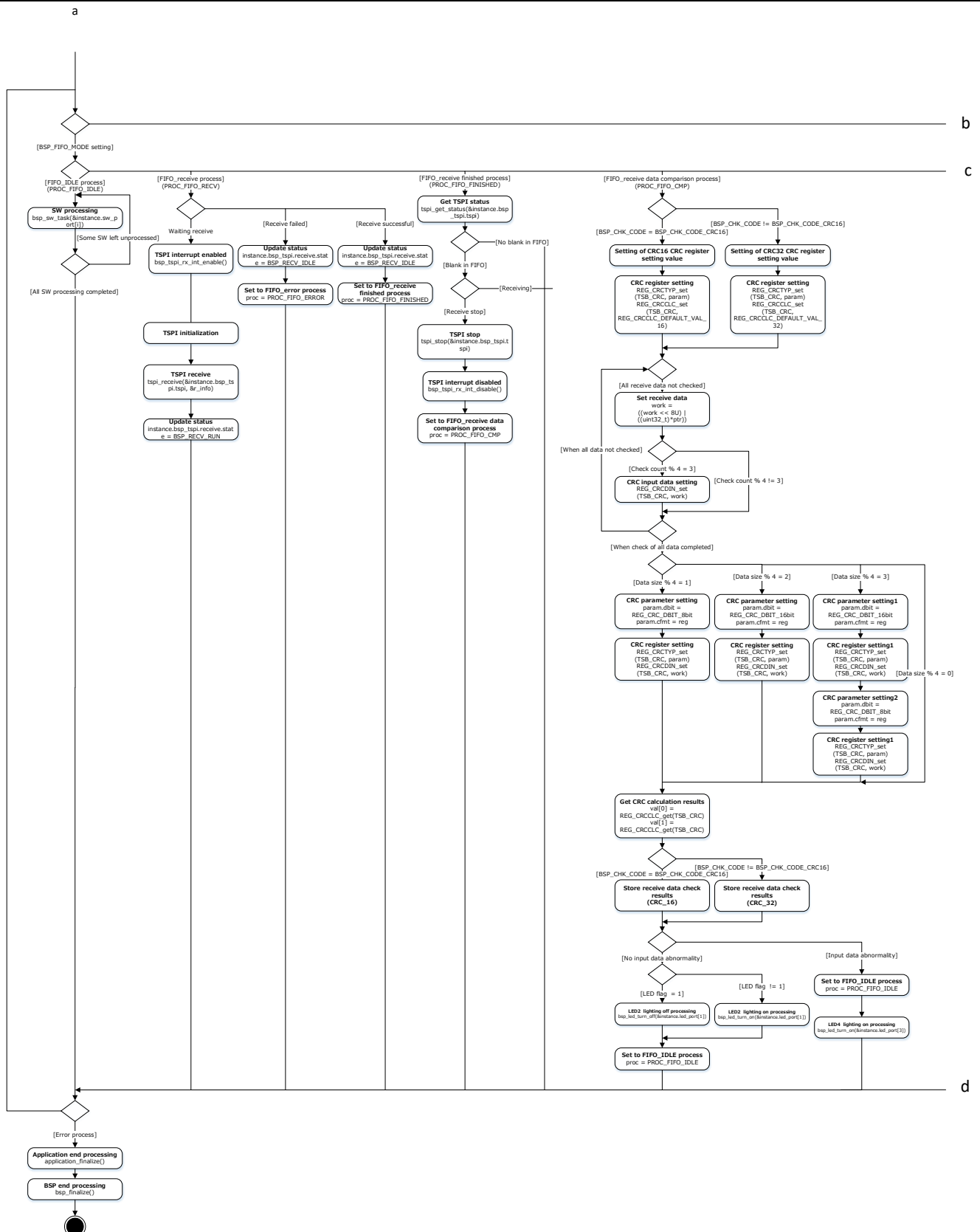
Channel Control Data: Transfer Mode Setting [DMACHnICfg]

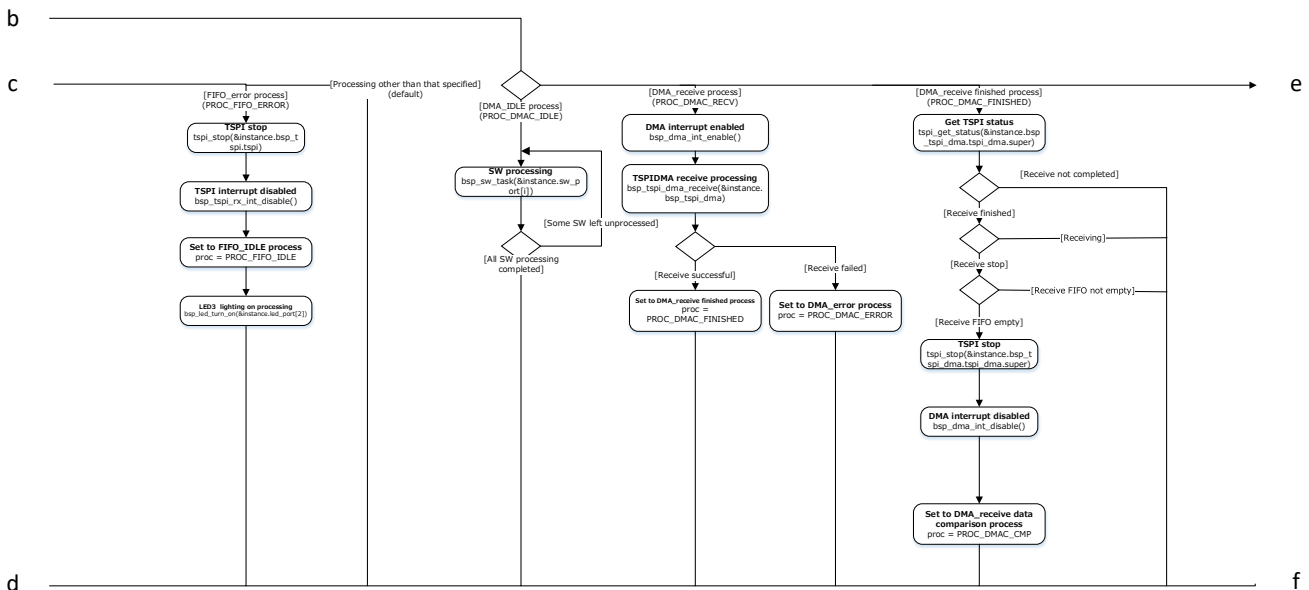
Configuration	Description
Destination Address Increment	00: [1byte]
Destination Data Size	00: [1byte]
Source Address Increment	11: [No increment]
Source Data Size	00: [1byte]
Arbitration	0000: [After 1 Rotation Transfer]
Transfer Count	0x00B: [12times (BSP_DATA_LENGTH)]
Singel Transfer Setting	0: [Not used because it is not a chain transfer]
Transfer Mode	001: [Unit Normal Transfer]

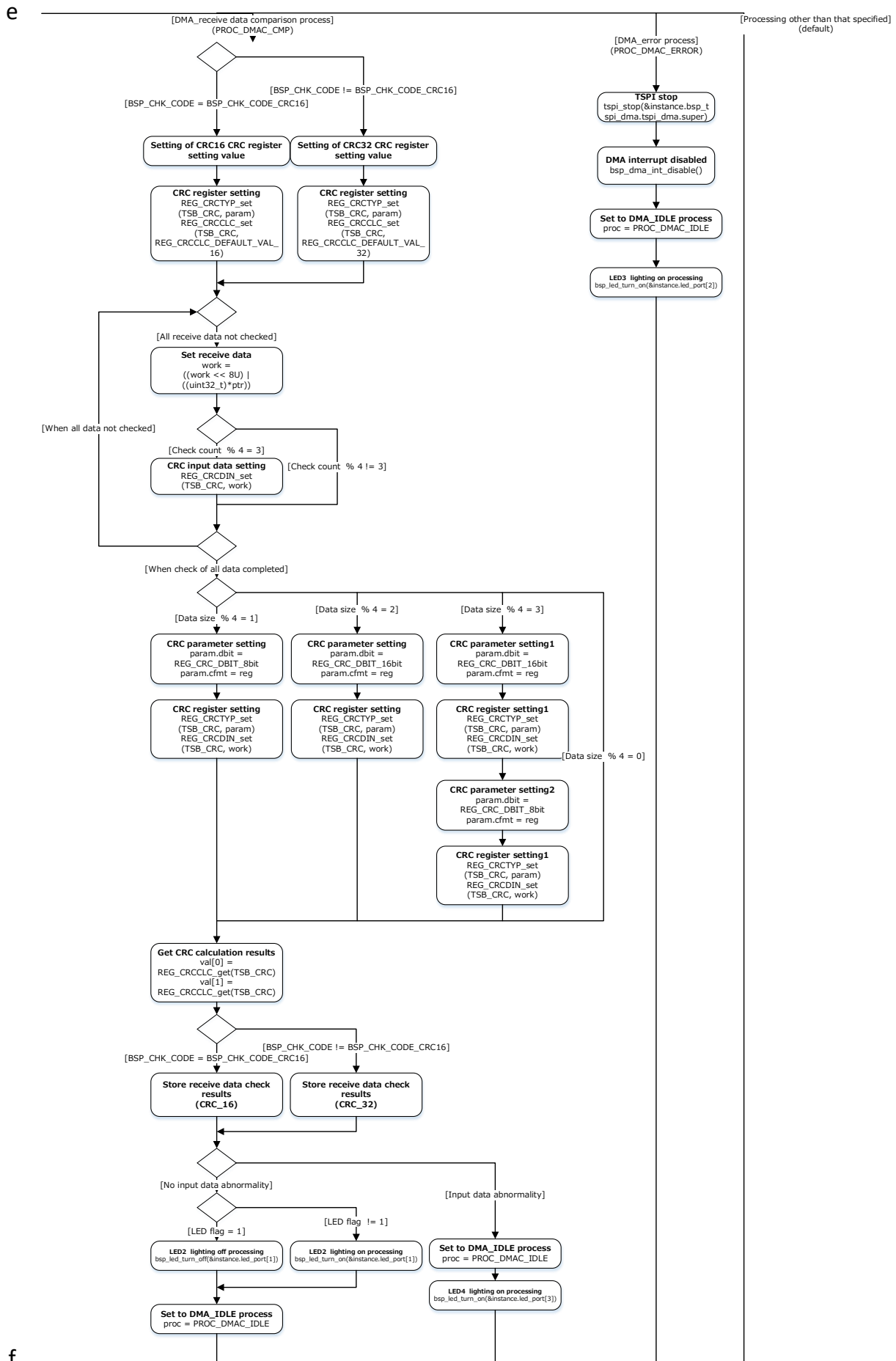
7. Activity diagram

7.1. main

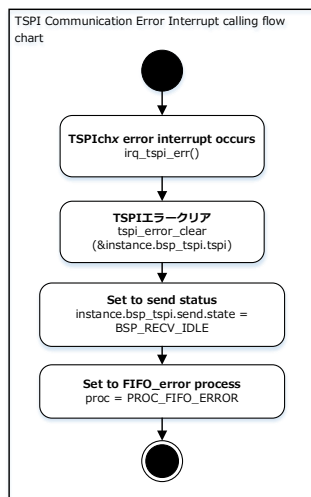
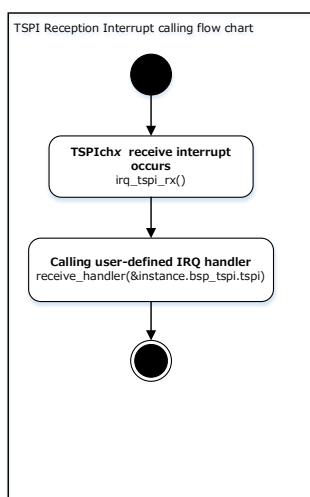
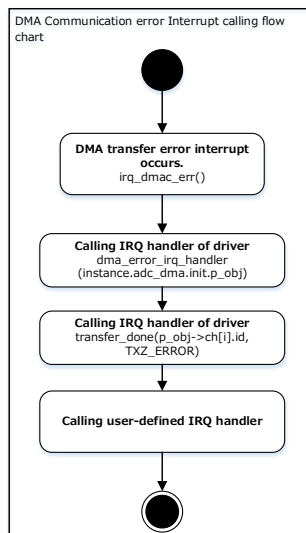
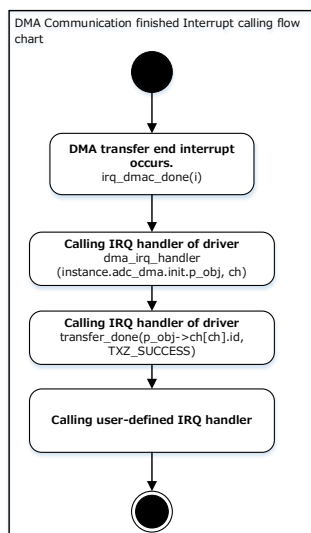
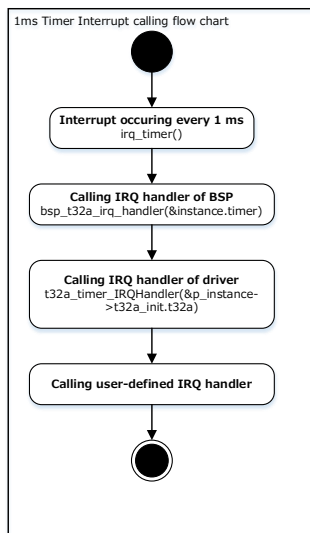






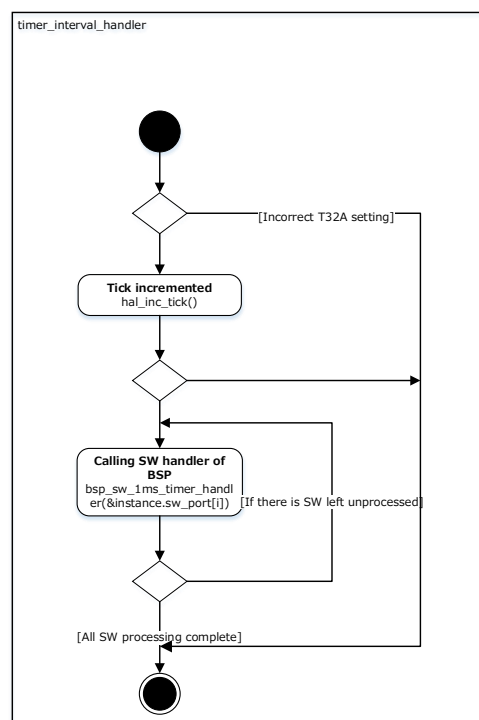


7.2. Interrupt

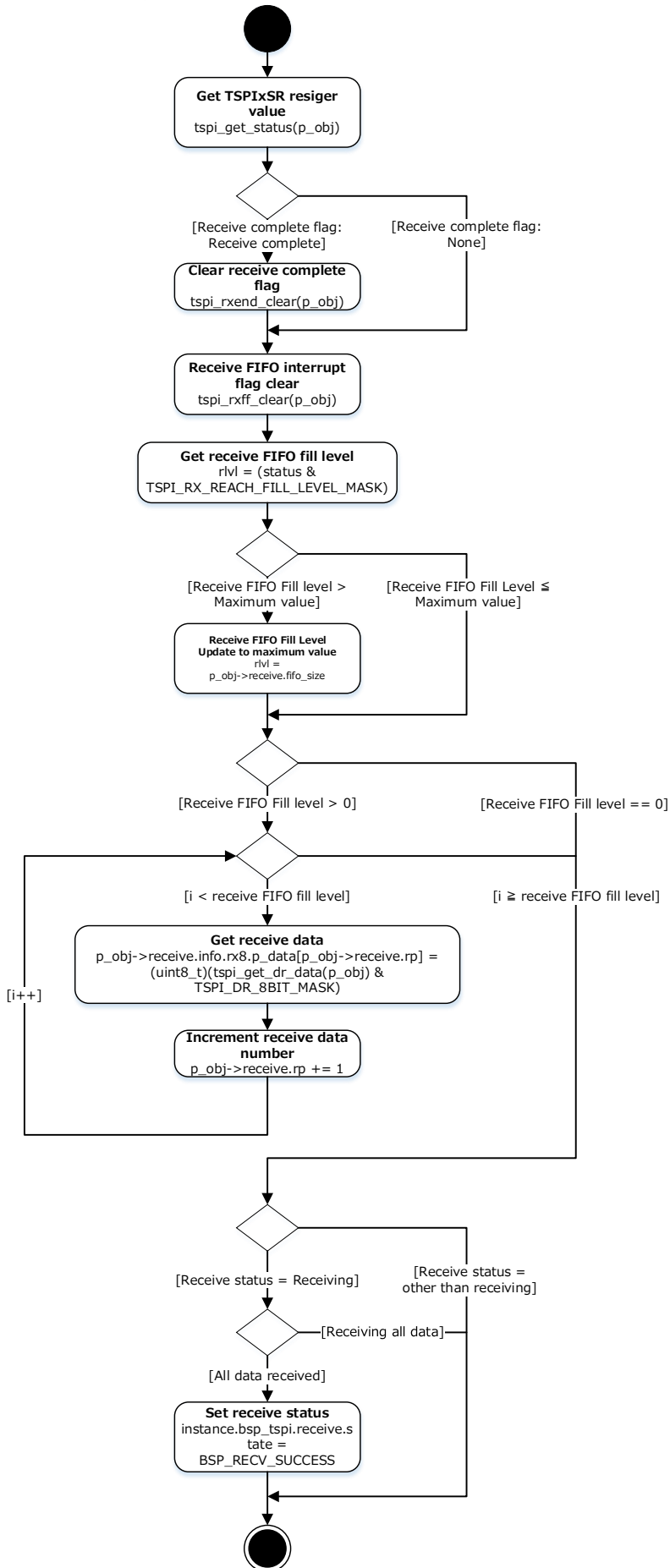


M471: x = 2
M4L4: x = 0

M471: x = 2
M4L4: x = 0



receive_handler(BSP_REQUEST_MODE = BSP_FIFO_MODE)



8. Revision History

Revision	Date	Description
1.0	2025-01-20	First release
1.1	2025-10-30	6.3 Interrupt to Use Added Interrupt for M3H

RESTRICTIONS ON PRODUCT USE

Toshiba Corporation and its subsidiaries and affiliates are collectively referred to as "TOSHIBA".

Hardware, software and systems described in this document are collectively referred to as "Product".

- TOSHIBA reserves the right to make changes to the information in this document and related Product without notice.
- This document and any information herein may not be reproduced without prior written permission from TOSHIBA. Even with TOSHIBA's written permission, reproduction is permissible only if reproduction is without alteration/omission.
- Though TOSHIBA works continually to improve Product's quality and reliability, Product can malfunction or fail. Customers are responsible for complying with safety standards and for providing adequate designs and safeguards for their hardware, software and systems which minimize risk and avoid situations in which a malfunction or failure of Product could cause loss of human life, bodily injury or damage to property, including data loss or corruption. Before customers use the Product, create designs including the Product, or incorporate the Product into their own applications, customers must also refer to and comply with (a) the latest versions of all relevant TOSHIBA information, including without limitation, this document, the specifications, the data sheets and application notes for Product and the precautions and conditions set forth in the "TOSHIBA Semiconductor Reliability Handbook" and (b) the instructions for the application with which the Product will be used with or for. Customers are solely responsible for all aspects of their own product design or applications, including but not limited to (a) determining the appropriateness of the use of this Product in such design or applications; (b) evaluating and determining the applicability of any information contained in this document, or in charts, diagrams, programs, algorithms, sample application circuits, or any other referenced documents; and (c) validating all operating parameters for such designs and applications. **TOSHIBA ASSUMES NO LIABILITY FOR CUSTOMERS' PRODUCT DESIGN OR APPLICATIONS.**
- **PRODUCT IS NEITHER INTENDED NOR WARRANTED FOR USE IN EQUIPMENTS OR SYSTEMS THAT REQUIRE EXTRAORDINARILY HIGH LEVELS OF QUALITY AND/OR RELIABILITY, AND/OR A MALFUNCTION OR FAILURE OF WHICH MAY CAUSE LOSS OF HUMAN LIFE, BODILY INJURY, SERIOUS PROPERTY DAMAGE AND/OR SERIOUS PUBLIC IMPACT ("UNINTENDED USE").** Except for specific applications as expressly stated in this document, Unintended Use includes, without limitation, equipment used in nuclear facilities, equipment used in the aerospace industry, lifesaving and/or life supporting medical equipment, equipment used for automobiles, trains, ships and other transportation, traffic signaling equipment, equipment used to control combustions or explosions, safety devices, elevators and escalators, and devices related to power plant. **IF YOU USE PRODUCT FOR UNINTENDED USE, TOSHIBA ASSUMES NO LIABILITY FOR PRODUCT.** For details, please contact your TOSHIBA sales representative or contact us via our website.
- Product shall not be used for or incorporated into any products or systems whose manufacture, use, or sale is prohibited under any applicable laws or regulations.
- The information contained herein is presented only as guidance for Product use. No responsibility is assumed by TOSHIBA for any infringement of patents or any other intellectual property rights of third parties that may result from the use of Product. No license to any intellectual property right is granted by this document, whether express or implied, by estoppel or otherwise.
- **ABSENT A WRITTEN SIGNED AGREEMENT, EXCEPT AS PROVIDED IN THE RELEVANT TERMS AND CONDITIONS OF SALE FOR PRODUCT, AND TO THE MAXIMUM EXTENT ALLOWABLE BY LAW, TOSHIBA (1) ASSUMES NO LIABILITY WHATSOEVER, INCLUDING WITHOUT LIMITATION, INDIRECT, CONSEQUENTIAL, SPECIAL, OR INCIDENTAL DAMAGES OR LOSS, INCLUDING WITHOUT LIMITATION, LOSS OF PROFITS, LOSS OF OPPORTUNITIES, BUSINESS INTERRUPTION AND LOSS OF DATA, AND (2) DISCLAIMS ANY AND ALL EXPRESS OR IMPLIED WARRANTIES AND CONDITIONS RELATED TO SALE, USE OF PRODUCT, OR INFORMATION, INCLUDING WARRANTIES OR CONDITIONS OF MERCHANTABILITY, FITNESS FOR A PARTICULAR PURPOSE, ACCURACY OF INFORMATION, OR NONINFRINGEMENT.**
- Do not use or otherwise make available Product or related software or technology for any military purposes, including without limitation, for the design, development, use, stockpiling or manufacturing of nuclear, chemical, or biological weapons or missile technology products (mass destruction weapons). Product and related software and technology may be controlled under the applicable export laws and regulations including, without limitation, the Japanese Foreign Exchange and Foreign Trade Law and the U.S. Export Administration Regulations. Export and re-export of Product or related software or technology are strictly prohibited except in compliance with all applicable export laws and regulations.
- Please contact your TOSHIBA sales representative for details as to environmental matters such as the RoHS compatibility of Product. Please use Product in compliance with all applicable laws and regulations that regulate the inclusion or use of controlled substances, including without limitation, the EU RoHS Directive. **TOSHIBA ASSUMES NO LIABILITY FOR DAMAGES OR LOSSES OCCURRING AS A RESULT OF NONCOMPLIANCE WITH APPLICABLE LAWS AND REGULATIONS.**

Toshiba Electronic Devices & Storage Corporation

<https://toshiba.semicon-storage.com/>