

M3H Group(1)
Application Note
Asynchronous Serial
Communication Circuit
(UART-C)

Outlines

This application note is a reference material for developing products using the asynchronous serial communication circuit (UART) function of M3H Group(1).
This document helps the user check operation of the product and develop its program.

Target sample program: UART_Echo

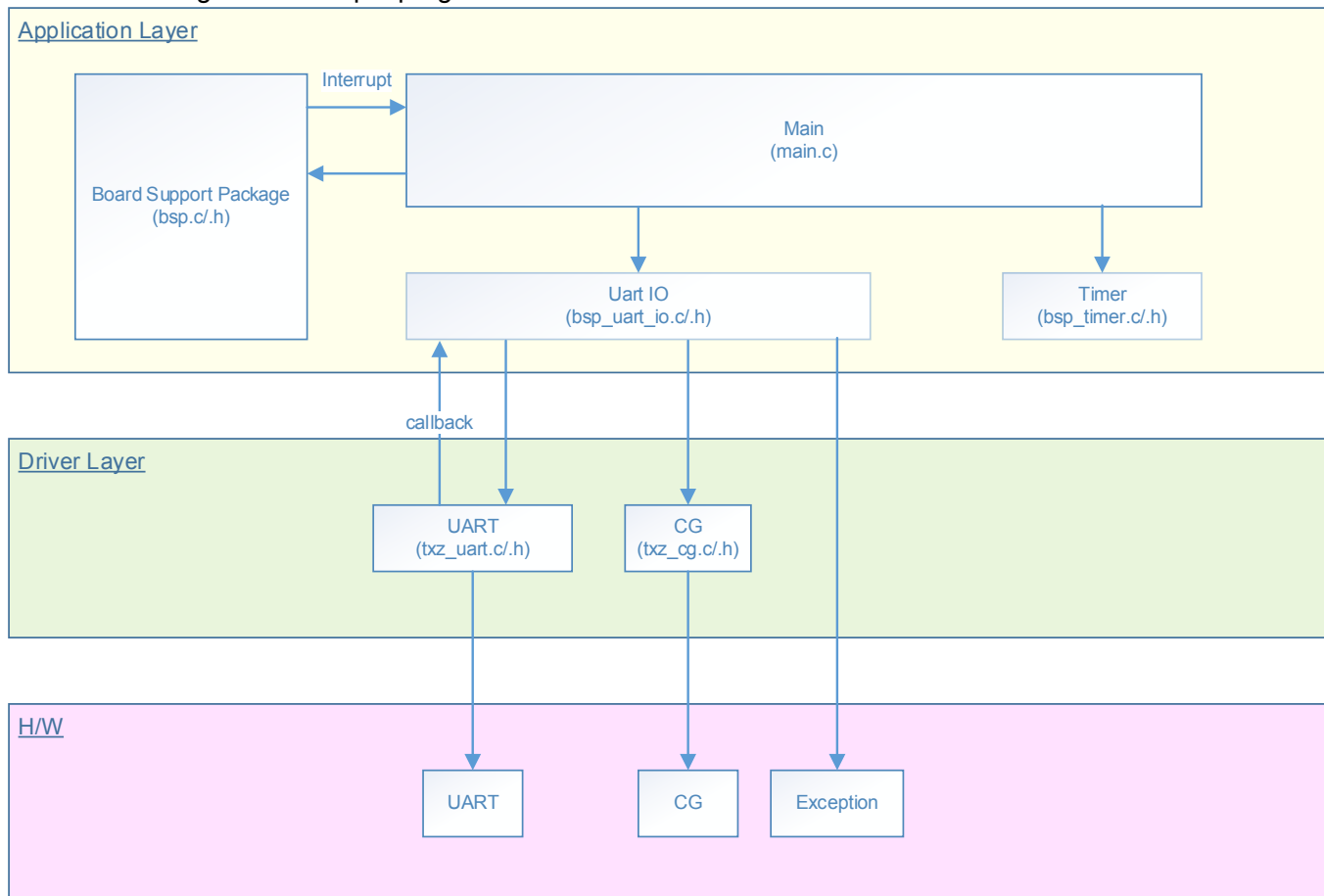
Table of Contents

Outlines	1
Table of Contents	2
1. Preface	3
2. Reference Document	4
3. Function to Use	4
4. Target Device	4
5. Operation confirmation condition	5
6. Evaluation Board Setting	6
7. Operation of Evaluation Board	6
8. Outline of UART interface function	7
8.1. Clock Supply	7
9. Sample Program	8
9.1. Initialization	8
9.2. Sample Program Main Operation	8
9.3. Output Example of Sample Program	9
9.3.1. Setting Example of Terminal Software	10
9.4. Operating Flow of Sample Program	11
10. Precaution	22
11. Revision History	22
RESTRICTIONS ON PRODUCT USE	23

1. Preface

This sample program is used to check the operation of UART communication function. It executes command input and echo back from the terminal software on the PC via the USB - UART interface.

Structure diagram of Sample program



2. Reference Document

- Datasheet
 TMPM3H group (1) datasheet Rev2.0 (Japanese edition)
- Reference manual
 Asynchronous serial communication circuit (UART-C) Rev2.0 (Japanese edition)
- Other reference document
 TMPM3H(1) Group Peripheral Driver User Manual (Doxygen)

3. Function to Use

IP	channel	port	Function / operation mode
Asynchronous communication	ch0	PA1 (UT0TXDA) PA2 (UT0RXD)	UART mode

4. Target Device

The target devices of application note are as follows.

TMPM3H6FWFG	TMPM3H6FUFG	TMPM3H6FSFG
TMPM3H6FWDFG	TMPM3H6FUDFG	TMPM3H6FSDFG
TMPM3H5FWFG	TMPM3H5FUFG	TMPM3H5FSFG
TMPM3H5FWDFG	TMPM3H5FUDFG	TMPM3H5FSDFG
TMPM3H4FWUG	TMPM3H4FUUG	TMPM3H4FSUG
TMPM3H4FWFG	TMPM3H4FUFG	TMPM3H4FSFG
TMPM3H3FWUG	TMPM3H3FUUG	TMPM3H3FSUG
TMPM3H2FWDUG	TMPM3H2FUDUG	TMPM3H2FSDUG
TMPM3H2FWQG	TMPM3H2FUQG	TMPM3H2FSQG
TMPM3H1FWUG	TMPM3H1FUUG	TMPM3H1FSUG
TMPM3H1FPUG	TMPM3H0FSDUG	TMPM3H0FMDUG

* This sample program operates on the evaluation board of TMPM3H6FWFG.

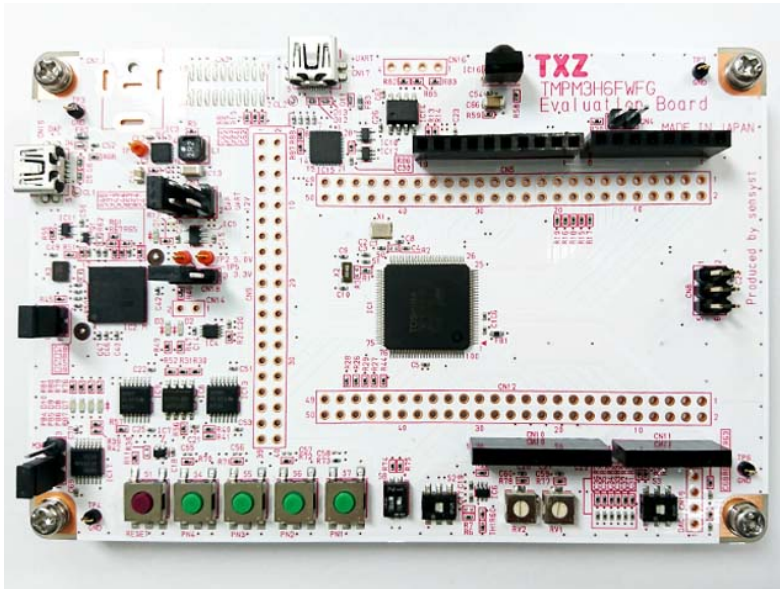
If other function than the TMPM3H6 one is checked, it is necessary that CMSIS Core related files (C startup file and I/O header file) should be changed properly.

The BSP related file is dedicated to the evaluation board (TMPM3H6). If other function than the TMPM3H6 one is checked, the BSP related file should be changed properly.

5. Operation confirmation condition

Used microcontroller TPM3H6FWFG
Used board TPM3H6FWFG Evaluation Board (Product of Sensystr)
Unified development environment IAR Embedded Workbench for ARM 8.11.2.13606
Unified development environment μVision MDK Version 5.24.2.0
Terminal software Tera Term V4.96
Sample program V1100

Evaluation board (TPM3H6FWFG Evaluation Board) (Top view)

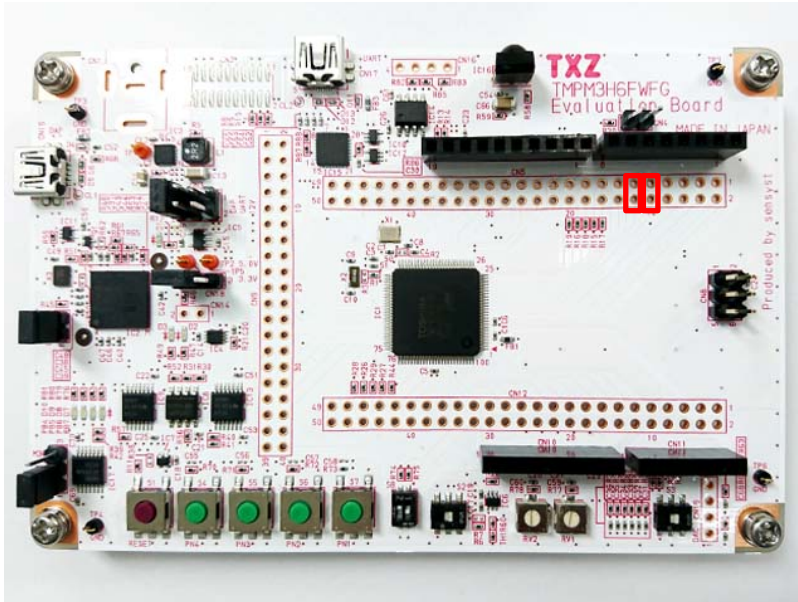


For purchasing the board, refer to the following homepage. (<http://www.chip1stop.com/>)

6. Evaluation Board Setting

The following pin connections should be done on the evaluation board.

CN5		
Use	Through-hole No.	Setting
UART (RXD)	9-10	Connection
UART (TXD)	11-12	Connection



7. Operation of Evaluation Board

PC should be connected to the USB_UART pin on the evaluation board with a USB cable. After start-up the terminal software (Tera Term), performs communication setting on the terminal software. Push the reset button on the evaluation board. The following operations should be done on the terminal software (Tera Term) on PC.

1. Initial display
"Input =" requires a user inputting proper information on the display
2. Character input
The user should input proper characters. Then, "Enter" should be done.
3. Echo-back output
The input characters are displayed after "Echo =".
4. When the count of the characters exceeds the maximum value;
"Input Error !!" is displayed.

Port	TXD:PA1, RXD:PA2
------	------------------

8. Outline of UART interface function

The asynchronous serial communication circuit (UART) can operate as a transmission / reception circuit of 1 channel (UTxTXDA / UTxTXDB / UTxRXD) per unit. The following is a list of functions.

Function classification	Function	Operation explanation
Baud rate control	Frequency dividing of prescaler	Selectable from 1/1 to 1/512 of the $\Phi T0$ frequency.
	Baud rate generator	N dividing or $N + (64 - K) / 64$ ($N = 1$ to 65535 and $K = 0$ to 63) dividing of the source clock frequency are possible.
Data format	Data length	Selectable 7, 8, or 9-bit.
	Parity	Parity control: Enable or disable selection Parity type: Even or odd parity is selectable
	Stop bit length	Selectable 1-bit or 2-bit.
	Data transfer order	Selectable LSB first or MSB first.
	Data signal inversion	Inversion control of the input and output data signal. Selectable disabled or enabled.
Transmission / reception control	FIFO storage stages	Reception: 8 stages Transmission: 8 stages
	Noise cancelling function	Reception: Noise cancelling function is enabled or disabled for UTxRXD.
	Error detection	Reception: Parity error, Framing error, Break error, Overrun error Transmission: Break error, Trigger transmission error
	Handshake function	Transmission / reception control by handshake with UTxCTS_N / UTxRTS_N signal is possible.
	Wake-up function	Serial link operation using the wakeup function in the 9-bit mode is possible.
Interlocking control	Interrupt	Reception interrupt, Transmission interrupt, and Error interrupt.
	DMA request	Reception DMA request: Burst transfer or Single transfer Transmission DMA request: Burst transfer or Single transfer
Special control	Half clock mode (Transmission / reception)	Transmission and reception with half width of "0" width of the normal UART waveform is possible.
	Loopback function (Test function)	The transmission data is connected to the reception data and the loopback test is possible.
	Software reset	Initialization can be done by software.

UTxTXDA can be exchanged for UTxRXD and UTxCTS_N can be exchanged for UTxRTS_N, too. This is done by a port setting. Refer to "Input/Output Ports" of the reference manual.

8.1. Clock Supply

When you use UART, please set an applicable clock enable bit to "1" (clock supply) in fsys supply stop register A (**[CGFSYSENA]**), fsys supply stop register B (**[CGFSYSENB]**), and fc supply stop registers (**[CGFCEN]**).

Please refer to "Clock Control and Operation Mode" of the reference manual for the details.

When attempting to stop supplying the clock, make sure to check whether the UART is stopping. Note that when the MCU enters STOP mode, make sure to check whether the UART is stopping as well.

9. Sample Program

The data transferred from the terminal software is echoed back.

9.1. Initialization

The following initialization is done after power is supplied.

The PORT setting is executed after the initialization of each clock setting, the watchdog timer setting and the clock setting.

9.2. Sample Program Main Operation

After the initialization operation, shift to the main function and perform the following initialization.

1. Initialization of BSP (Board Support Package)
2. Initialization of variables
3. Initialize the driver
4. Initialize the application

After performing the above processing, start the timer and clear the data.

It waits for input at "Input =" indication on the PC terminal software.

After inputting, the input character is displayed following "Echo =" display as the echo back output.

9.3. Output Example of Sample Program

After the sample program starts to operate, the command results are displayed as shown in the following.

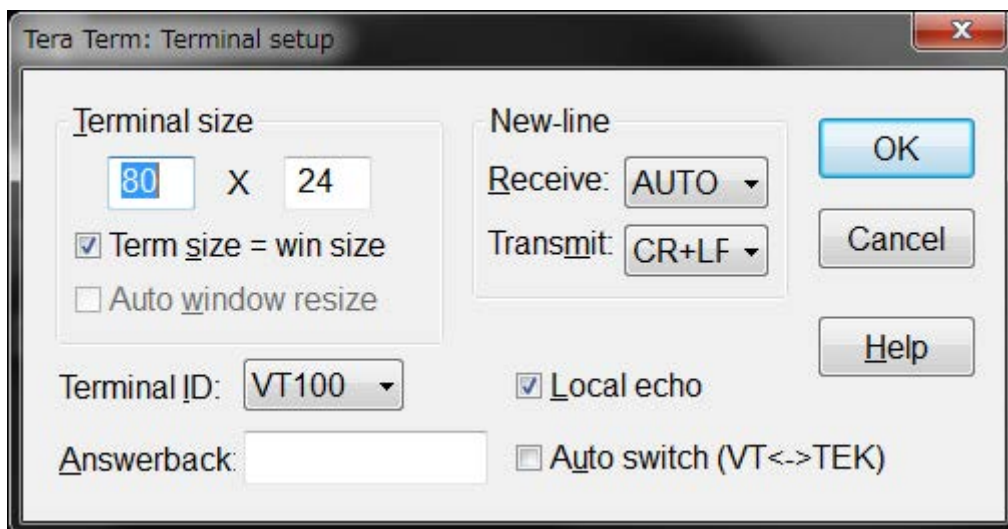
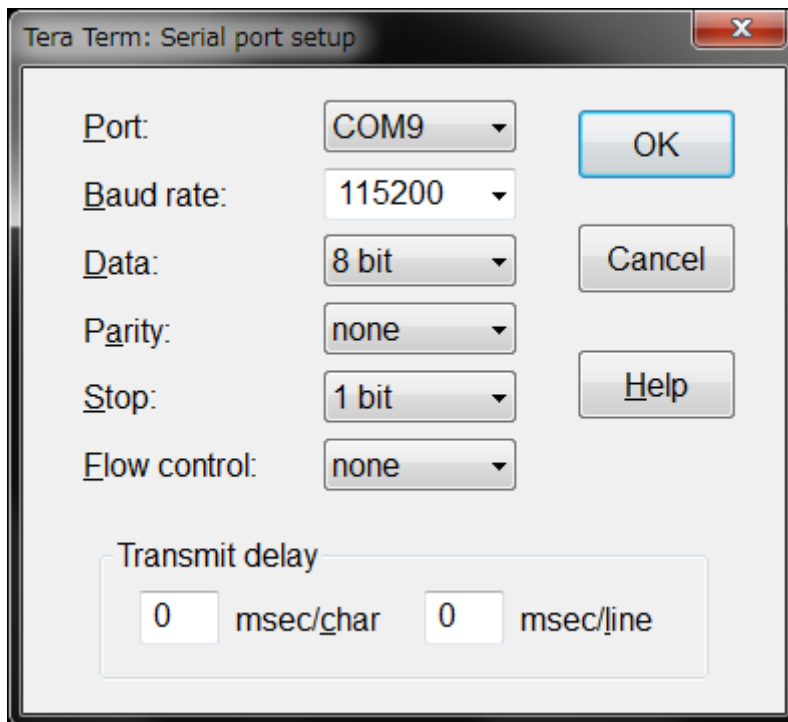


The screenshot shows a terminal window titled "COM9 - Tera Term VT". The window has a menu bar with "File", "Edit", "Setup", "Control", "Window", and "Help". The terminal output is as follows:

```
Input = 123456  
Echo = 123456  
Input = 01234567890123456789012345678901  
  
Input Error !!  
Input = Echo =  
Input =
```

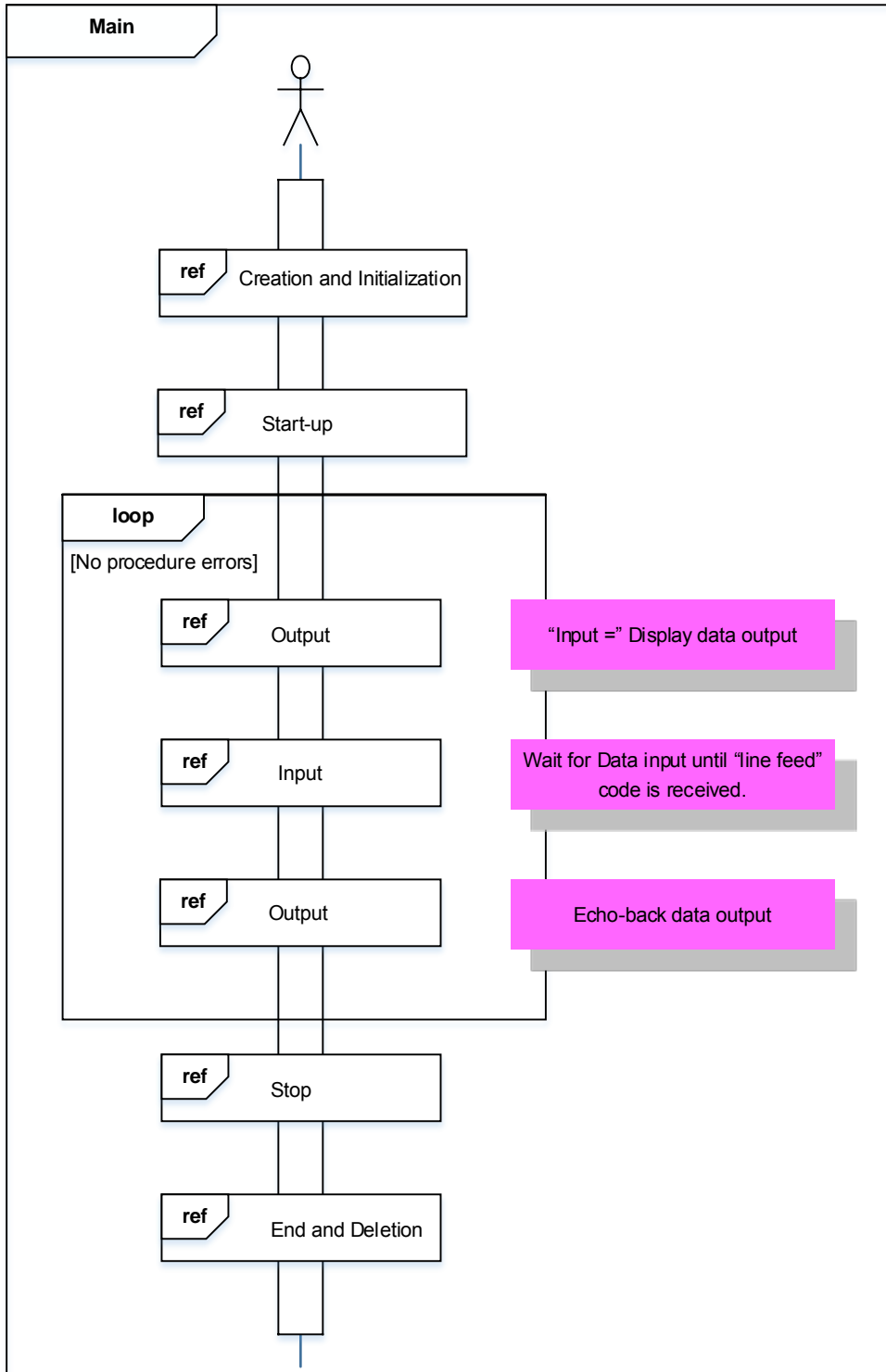
9.3.1. Setting Example of Terminal Software

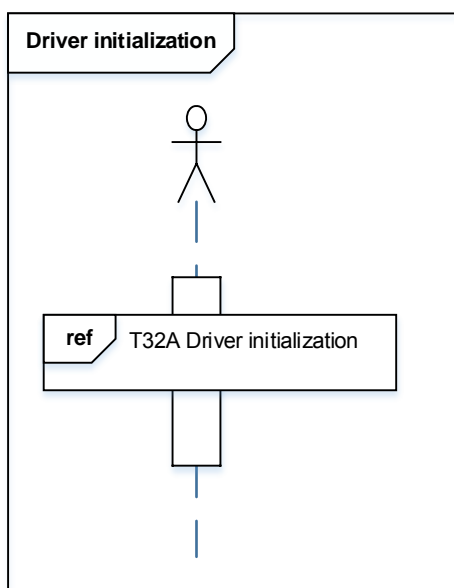
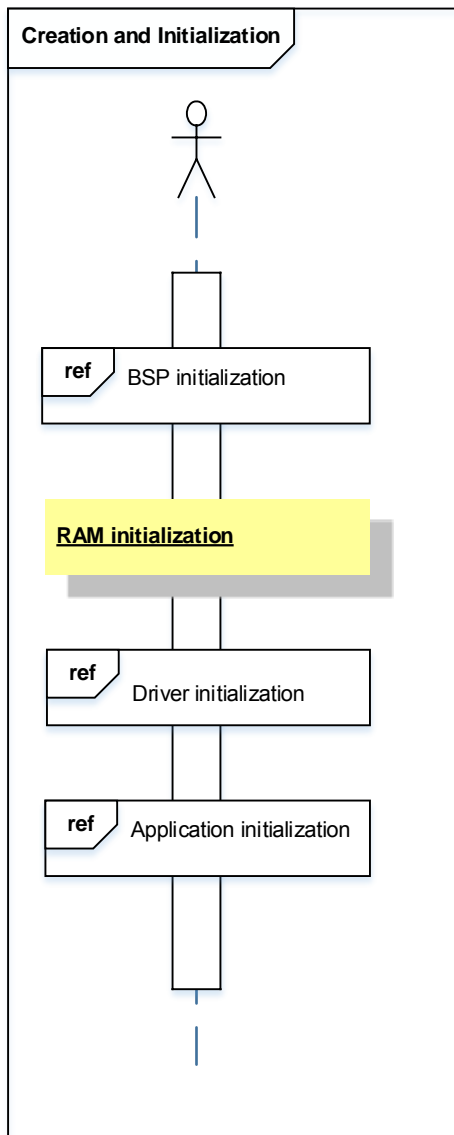
The operation of the terminal software (Tera Term) has been checked with the following settings.



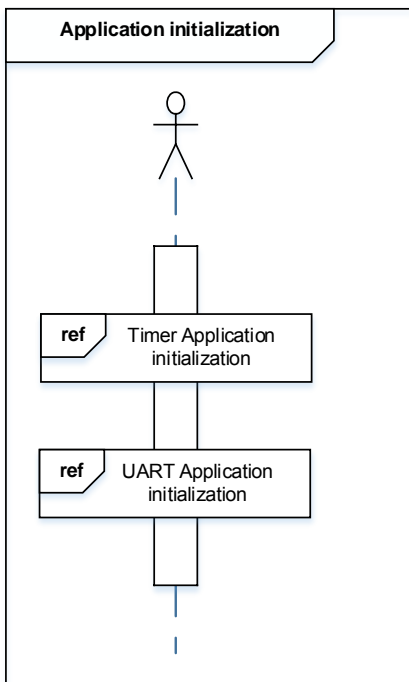
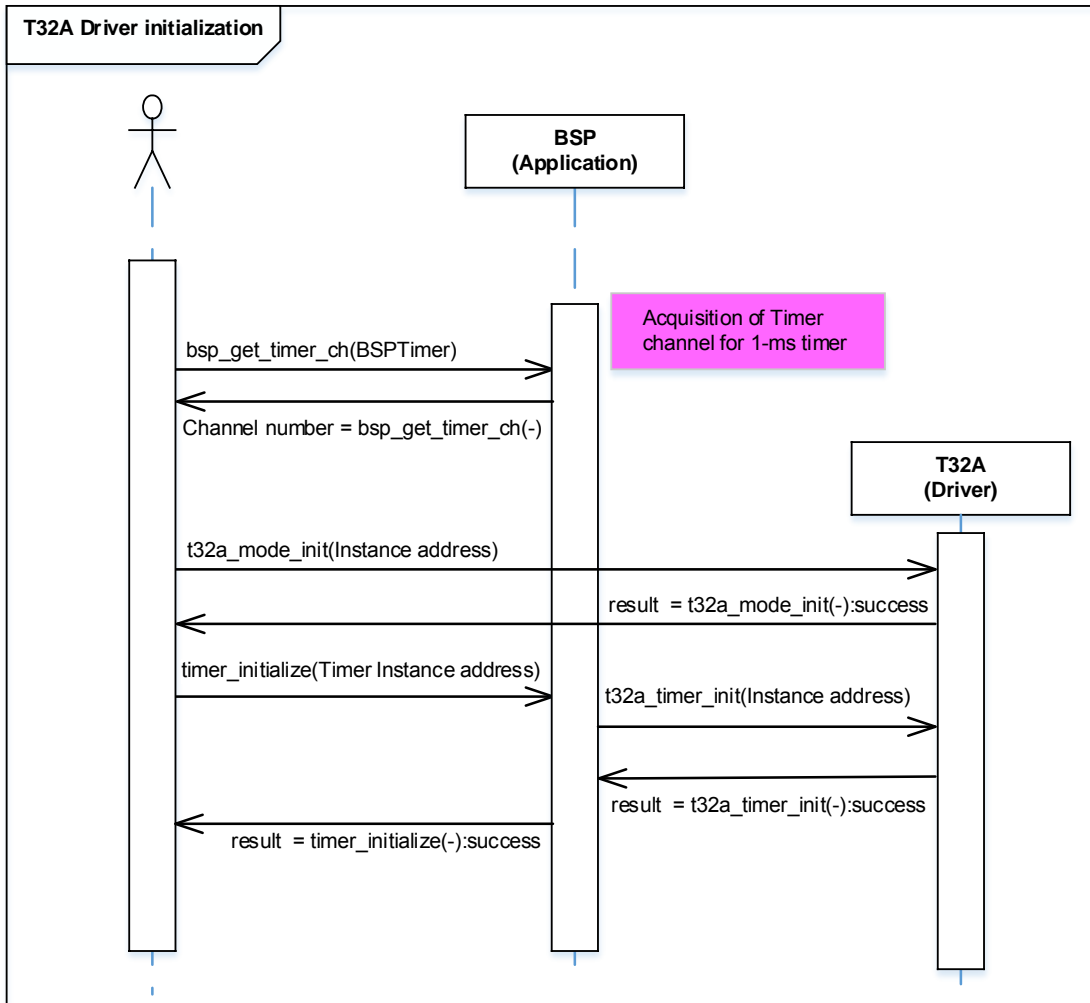
9.4. Operating Flow of Sample Program

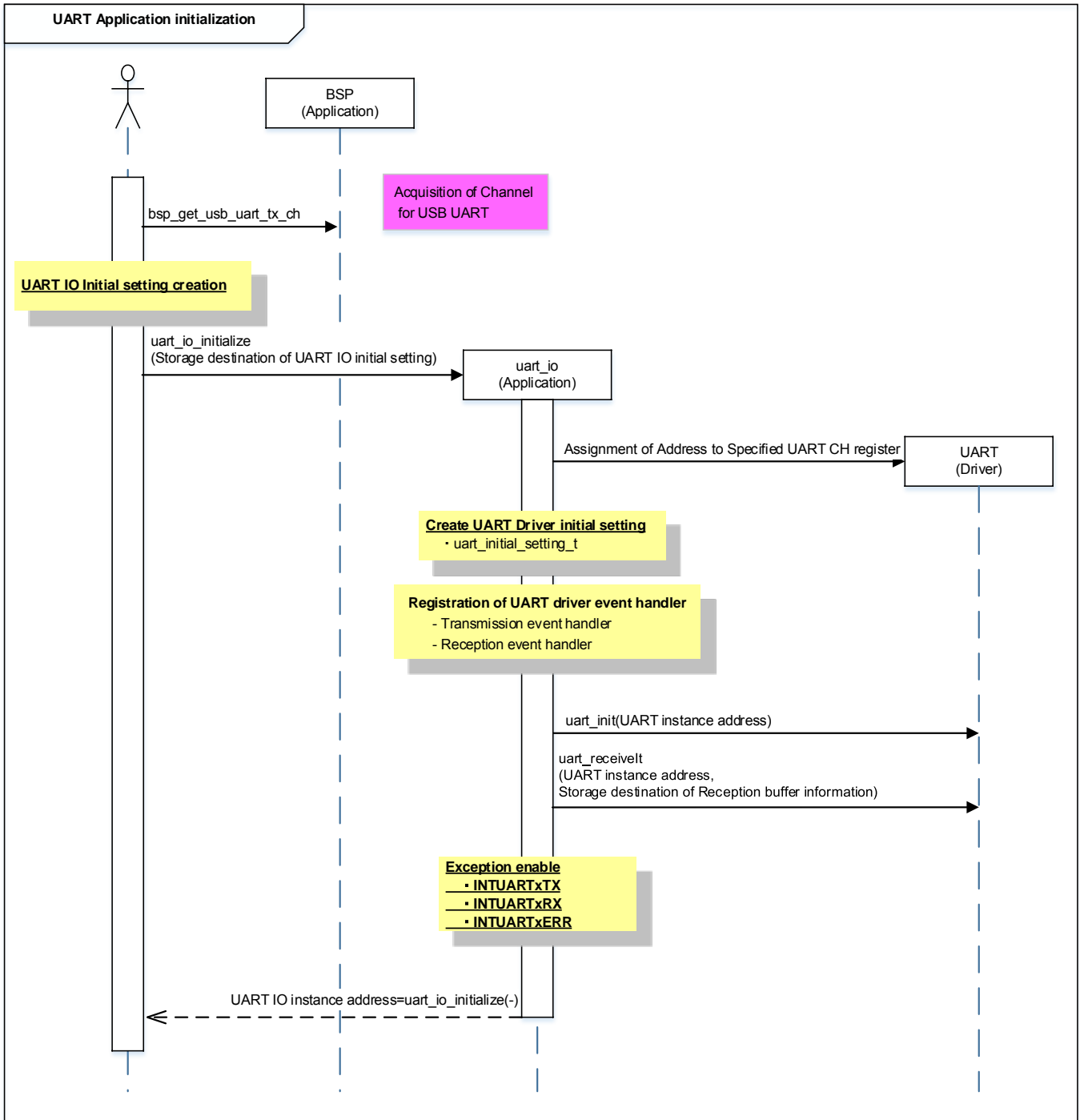
The operating flows of the sample program are shown as follows.

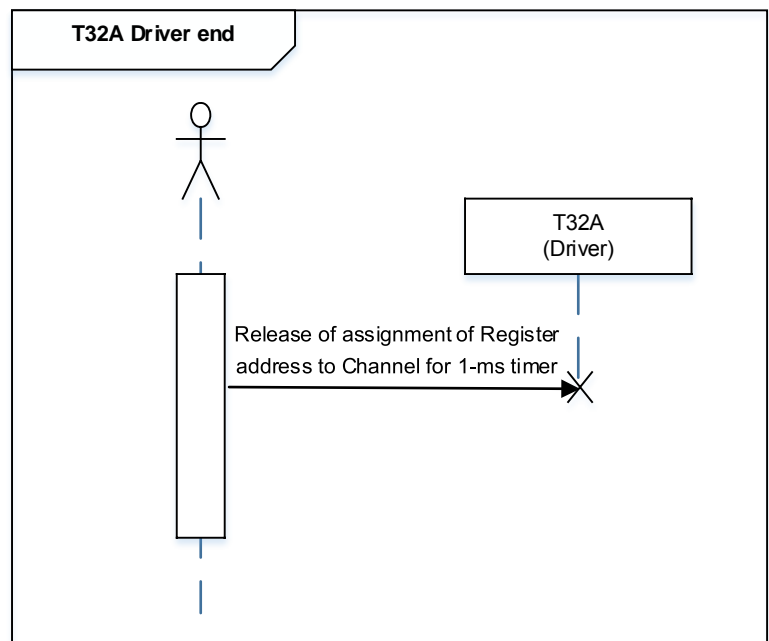
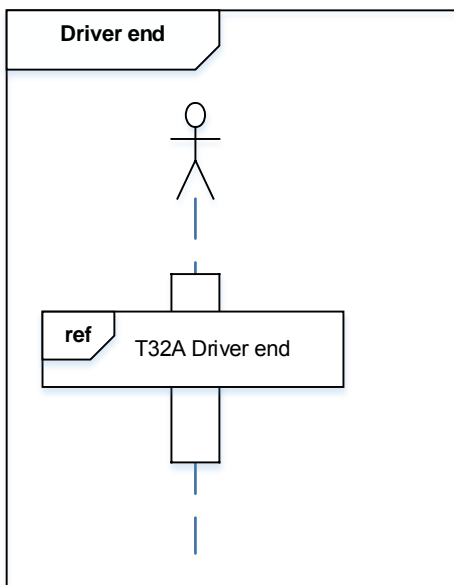
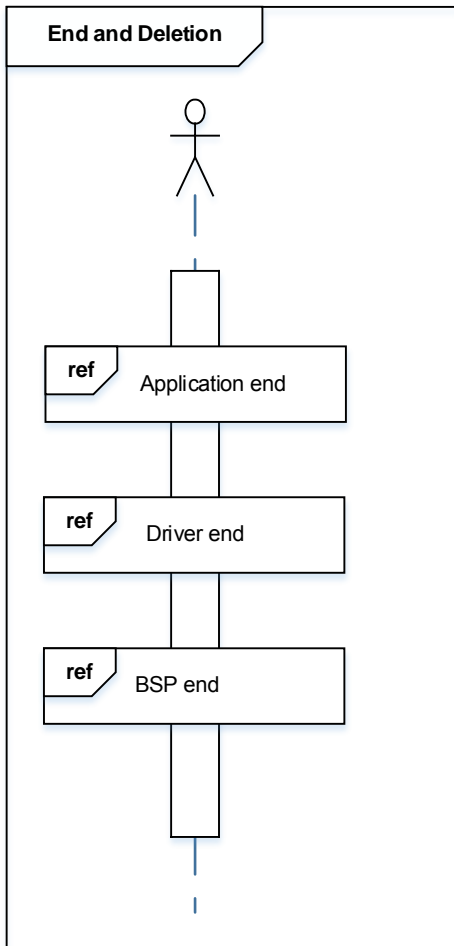


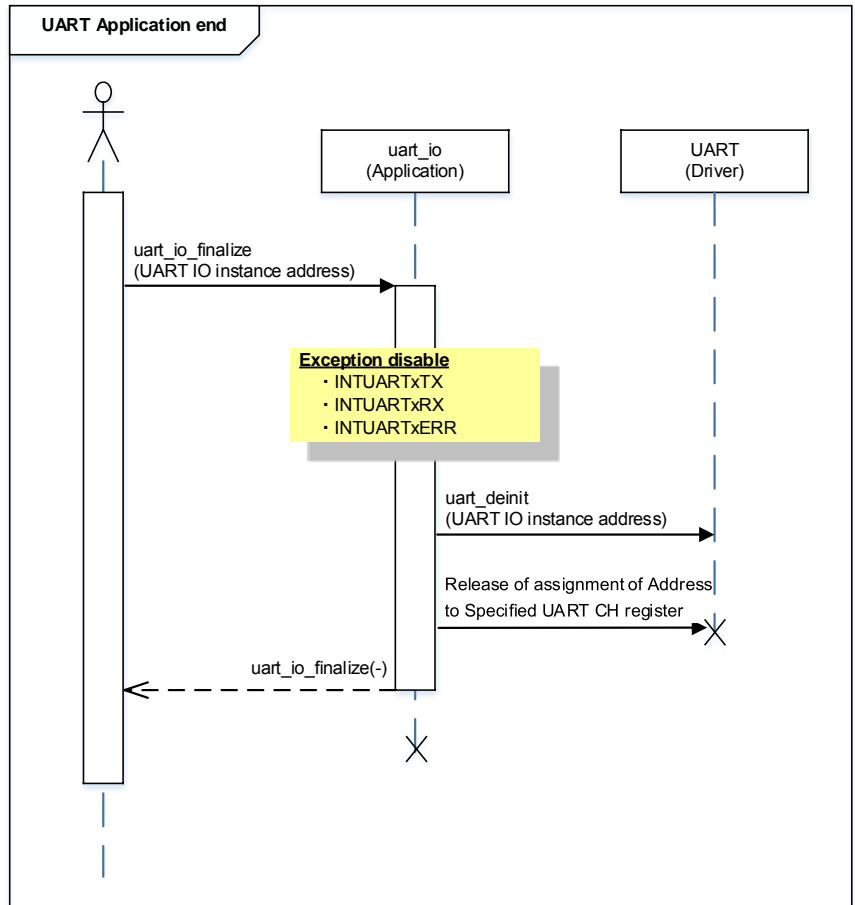
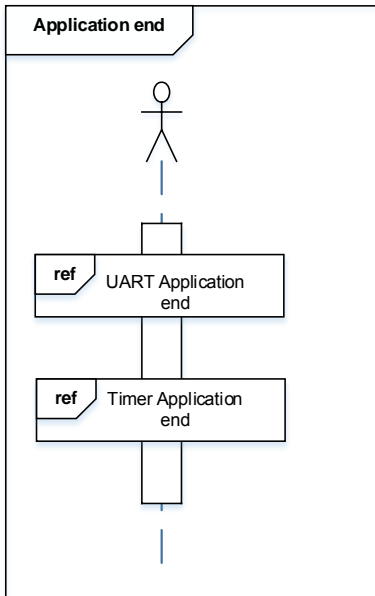


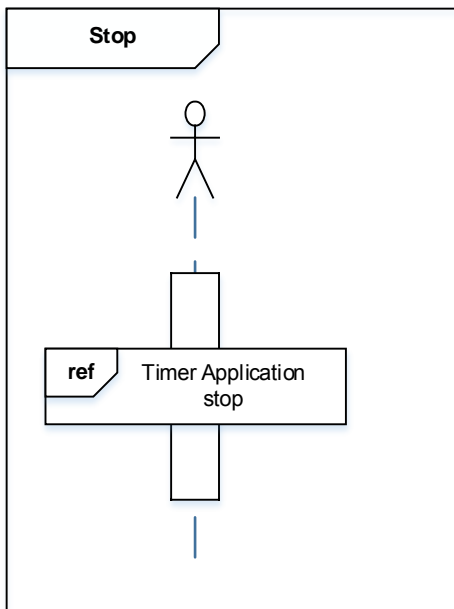
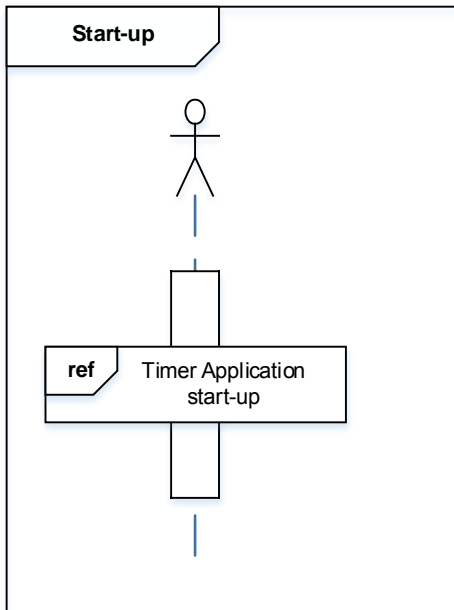
Although initialization setting of 32-bit timer event counter of TMPM3H is done, it is not used in actual operation of this sample program.

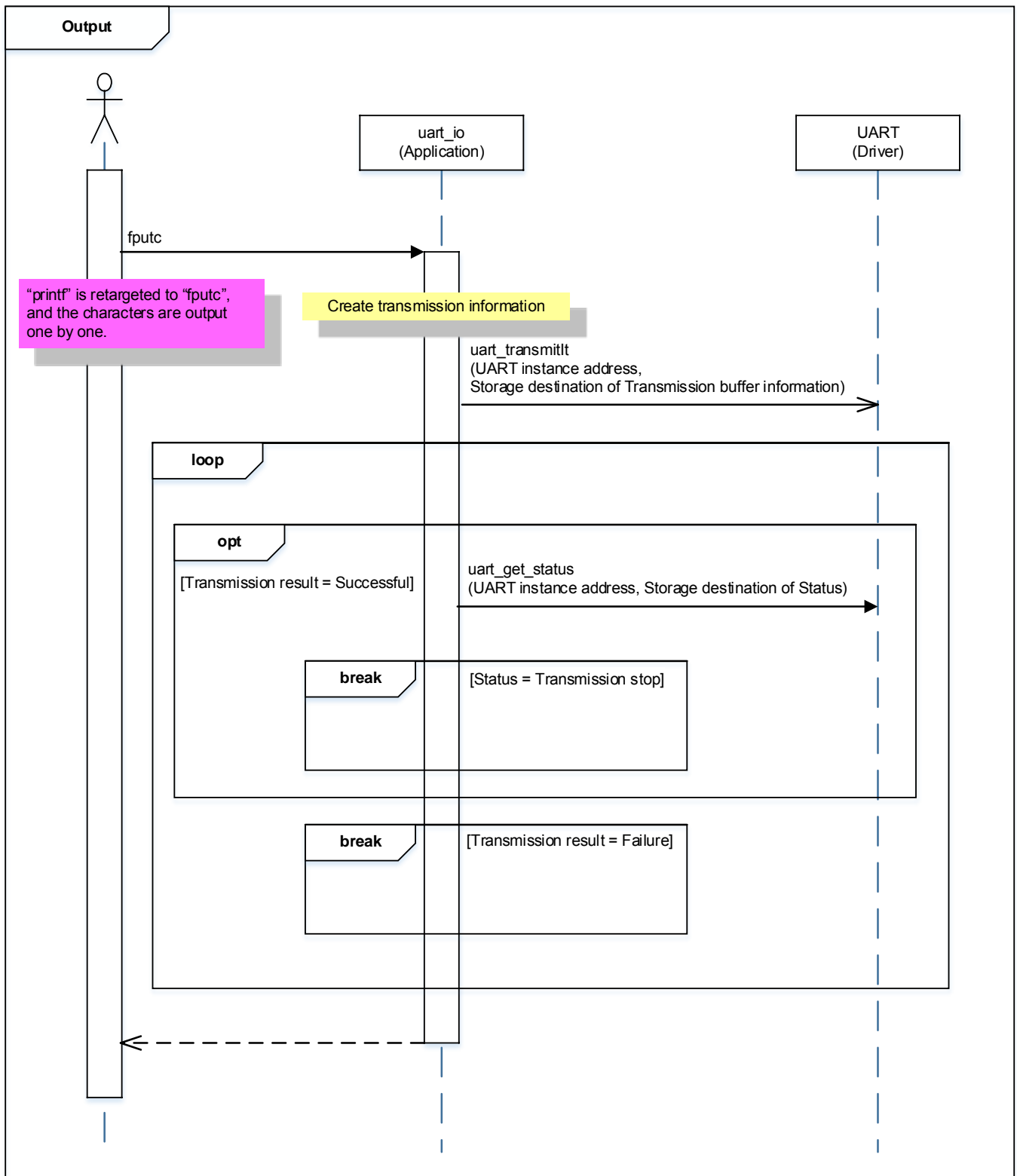


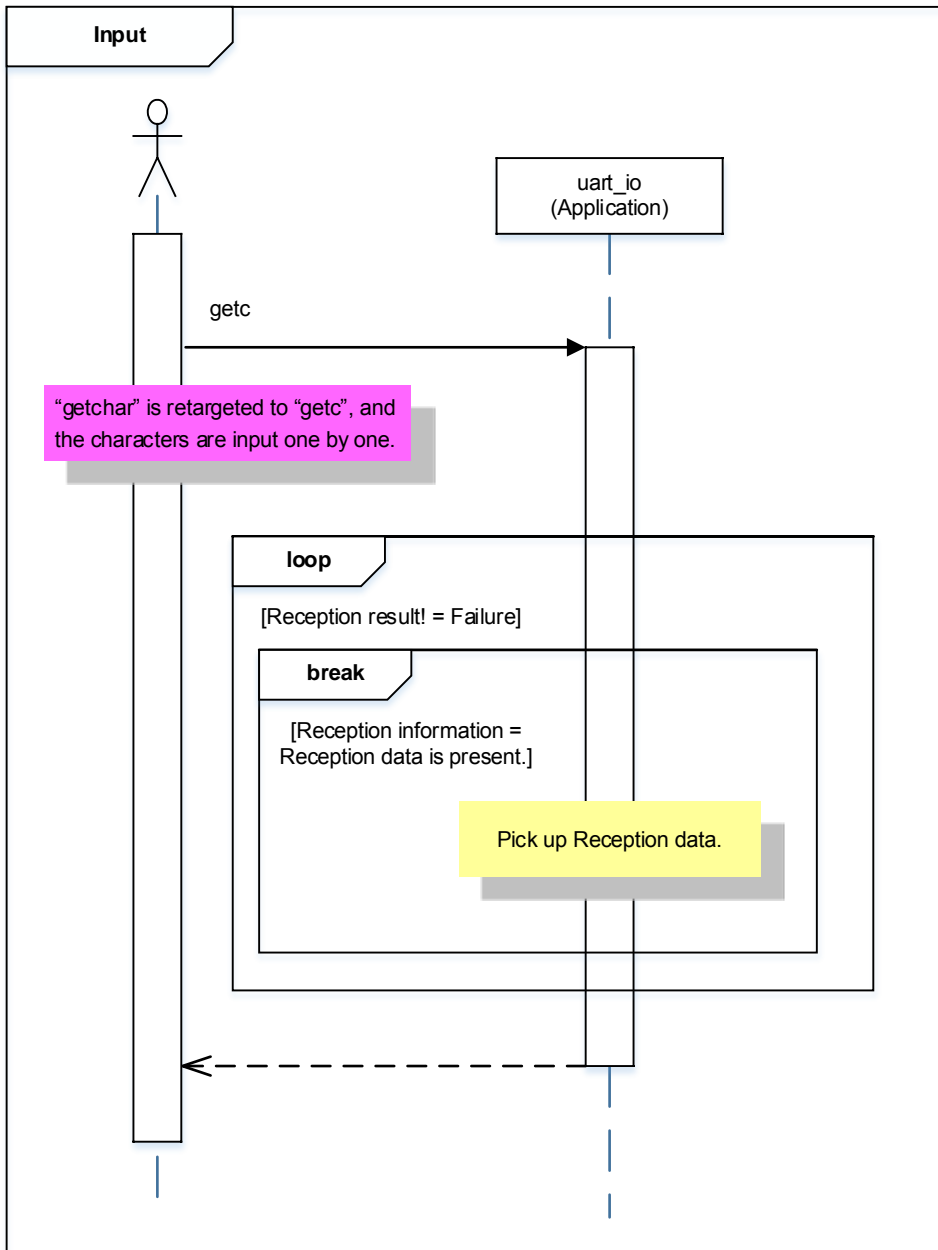


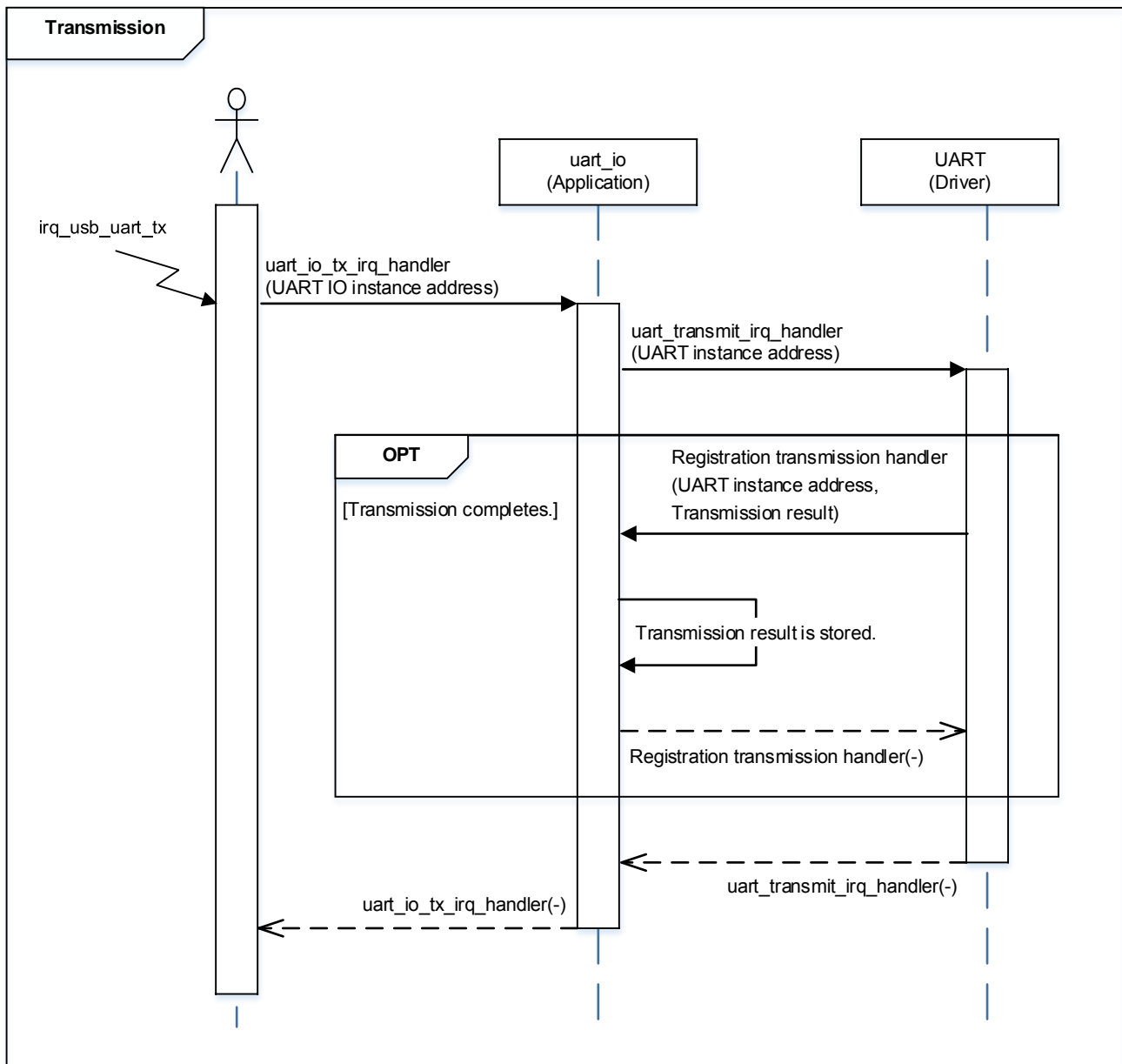


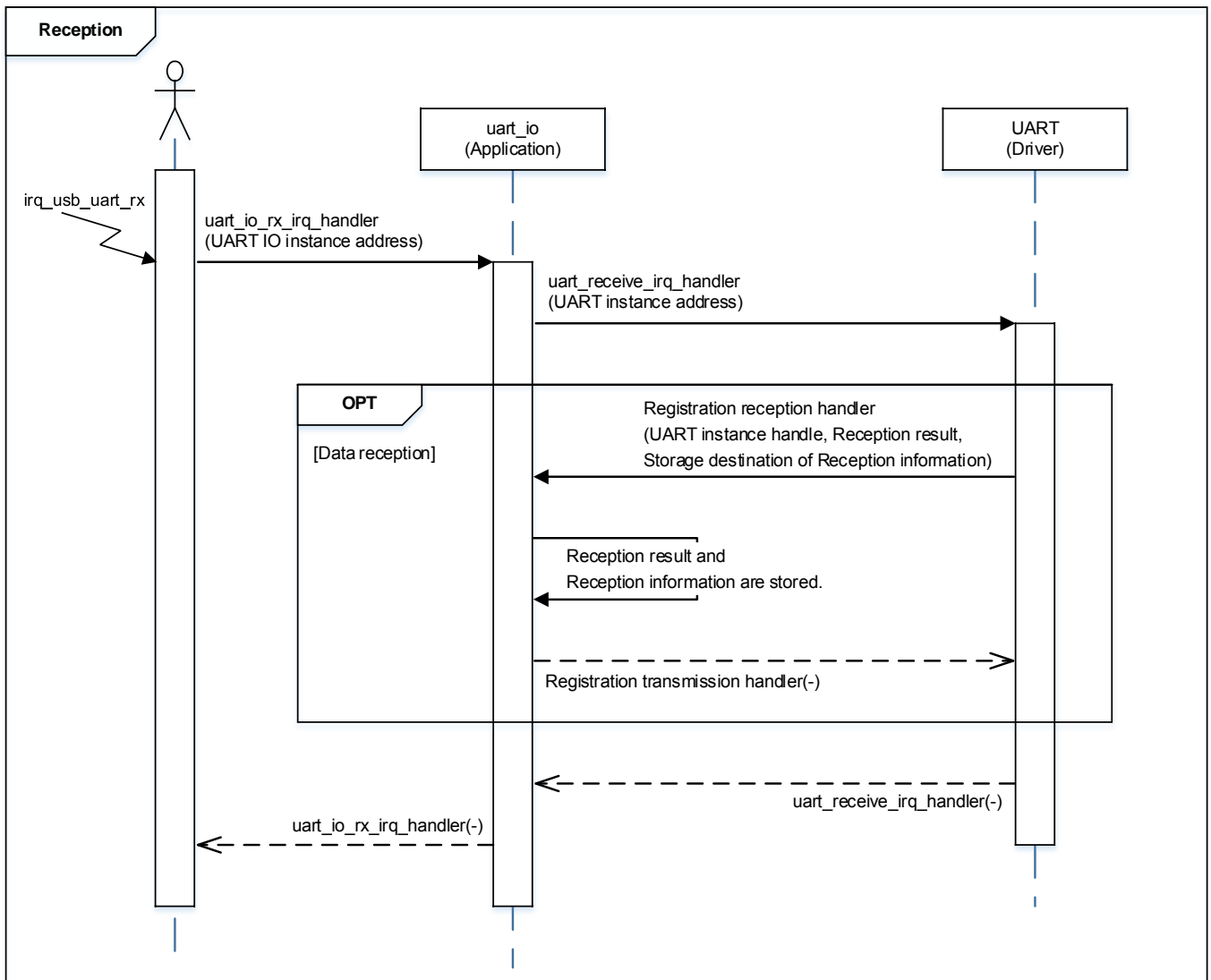












10. Precaution

When using the sample program with CPU other than TMPM3H6, please check operation sufficiently.

11. Revision History

Rev	Date	Page	Description
1.0	2018-03-15	-	First release

RESTRICTIONS ON PRODUCT USE

Toshiba Corporation and its subsidiaries and affiliates are collectively referred to as "TOSHIBA". Hardware, software and systems described in this document are collectively referred to as "Product".

- TOSHIBA reserves the right to make changes to the information in this document and related Product without notice.
- This document and any information herein may not be reproduced without prior written permission from TOSHIBA. Even with TOSHIBA's written permission, reproduction is permissible only if reproduction is without alteration/omission.
- Though TOSHIBA works continually to improve Product's quality and reliability, Product can malfunction or fail. Customers are responsible for complying with safety standards and for providing adequate designs and safeguards for their hardware, software and systems which minimize risk and avoid situations in which a malfunction or failure of Product could cause loss of human life, bodily injury or damage to property, including data loss or corruption. Before customers use the Product, create designs including the Product, or incorporate the Product into their own applications, customers must also refer to and comply with (a) the latest versions of all relevant TOSHIBA information, including without limitation, this document, the specifications, the data sheets and application notes for Product and the precautions and conditions set forth in the "TOSHIBA Semiconductor Reliability Handbook" and (b) the instructions for the application with which the Product will be used with or for. Customers are solely responsible for all aspects of their own product design or applications, including but not limited to (a) determining the appropriateness of the use of this Product in such design or applications; (b) evaluating and determining the applicability of any information contained in this document, or in charts, diagrams, programs, algorithms, sample application circuits, or any other referenced documents; and (c) validating all operating parameters for such designs and applications. **TOSHIBA ASSUMES NO LIABILITY FOR CUSTOMERS' PRODUCT DESIGN OR APPLICATIONS.**
- **PRODUCT IS NEITHER INTENDED NOR WARRANTED FOR USE IN EQUIPMENTS OR SYSTEMS THAT REQUIRE EXTRAORDINARILY HIGH LEVELS OF QUALITY AND/OR RELIABILITY, AND/OR A MALFUNCTION OR FAILURE OF WHICH MAY CAUSE LOSS OF HUMAN LIFE, BODILY INJURY, SERIOUS PROPERTY DAMAGE AND/OR SERIOUS PUBLIC IMPACT ("UNINTENDED USE").** Except for specific applications as expressly stated in this document, Unintended Use includes, without limitation, equipment used in nuclear facilities, equipment used in the aerospace industry, medical equipment, equipment used for automobiles, trains, ships and other transportation, traffic signaling equipment, equipment used to control combustions or explosions, safety devices, elevators and escalators, devices related to electric power, and equipment used in finance-related fields. **IF YOU USE PRODUCT FOR UNINTENDED USE, TOSHIBA ASSUMES NO LIABILITY FOR PRODUCT.** For details, please contact your TOSHIBA sales representative.
- Product shall not be used for or incorporated into any products or systems whose manufacture, use, or sale is prohibited under any applicable laws or regulations.
- The information contained herein is presented only as guidance for Product use. No responsibility is assumed by TOSHIBA for any infringement of patents or any other intellectual property rights of third parties that may result from the use of Product. No license to any intellectual property right is granted by this document, whether express or implied, by estoppel or otherwise.
- **ABSENT A WRITTEN SIGNED AGREEMENT, EXCEPT AS PROVIDED IN THE RELEVANT TERMS AND CONDITIONS OF SALE FOR PRODUCT, AND TO THE MAXIMUM EXTENT ALLOWABLE BY LAW, TOSHIBA (1) ASSUMES NO LIABILITY WHATSOEVER, INCLUDING WITHOUT LIMITATION, INDIRECT, CONSEQUENTIAL, SPECIAL, OR INCIDENTAL DAMAGES OR LOSS, INCLUDING WITHOUT LIMITATION, LOSS OF PROFITS, LOSS OF OPPORTUNITIES, BUSINESS INTERRUPTION AND LOSS OF DATA, AND (2) DISCLAIMS ANY AND ALL EXPRESS OR IMPLIED WARRANTIES AND CONDITIONS RELATED TO SALE, USE OF PRODUCT, OR INFORMATION, INCLUDING WARRANTIES OR CONDITIONS OF MERCHANTABILITY, FITNESS FOR A PARTICULAR PURPOSE, ACCURACY OF INFORMATION, OR NONINFRINGEMENT.**
- Do not use or otherwise make available Product or related software or technology for any military purposes, including without limitation, for the design, development, use, stockpiling or manufacturing of nuclear, chemical, or biological weapons or missile technology products (mass destruction weapons). Product and related software and technology may be controlled under the applicable export laws and regulations including, without limitation, the Japanese Foreign Exchange and Foreign Trade Law and the U.S. Export Administration Regulations. Export and re-export of Product or related software or technology are strictly prohibited except in compliance with all applicable export laws and regulations.
- Please contact your TOSHIBA sales representative for details as to environmental matters such as the RoHS compatibility of Product. Please use Product in compliance with all applicable laws and regulations that regulate the inclusion or use of controlled substances, including without limitation, the EU RoHS Directive. **TOSHIBA ASSUMES NO LIABILITY FOR DAMAGES OR LOSSES OCCURRING AS A RESULT OF NONCOMPLIANCE WITH APPLICABLE LAWS AND REGULATIONS.**