

**M4G Group (1)**  
**Application Note**  
**8-bit Digital to Analog Converter**  
**(DAC-A)**

**Outlines**

This application note is a reference material for developing products using 8-bit digital to analog converter (DAC) function of M4G Group (1).

This document helps the user check operation of the product and develop its program

Target sample program: DAC-UART

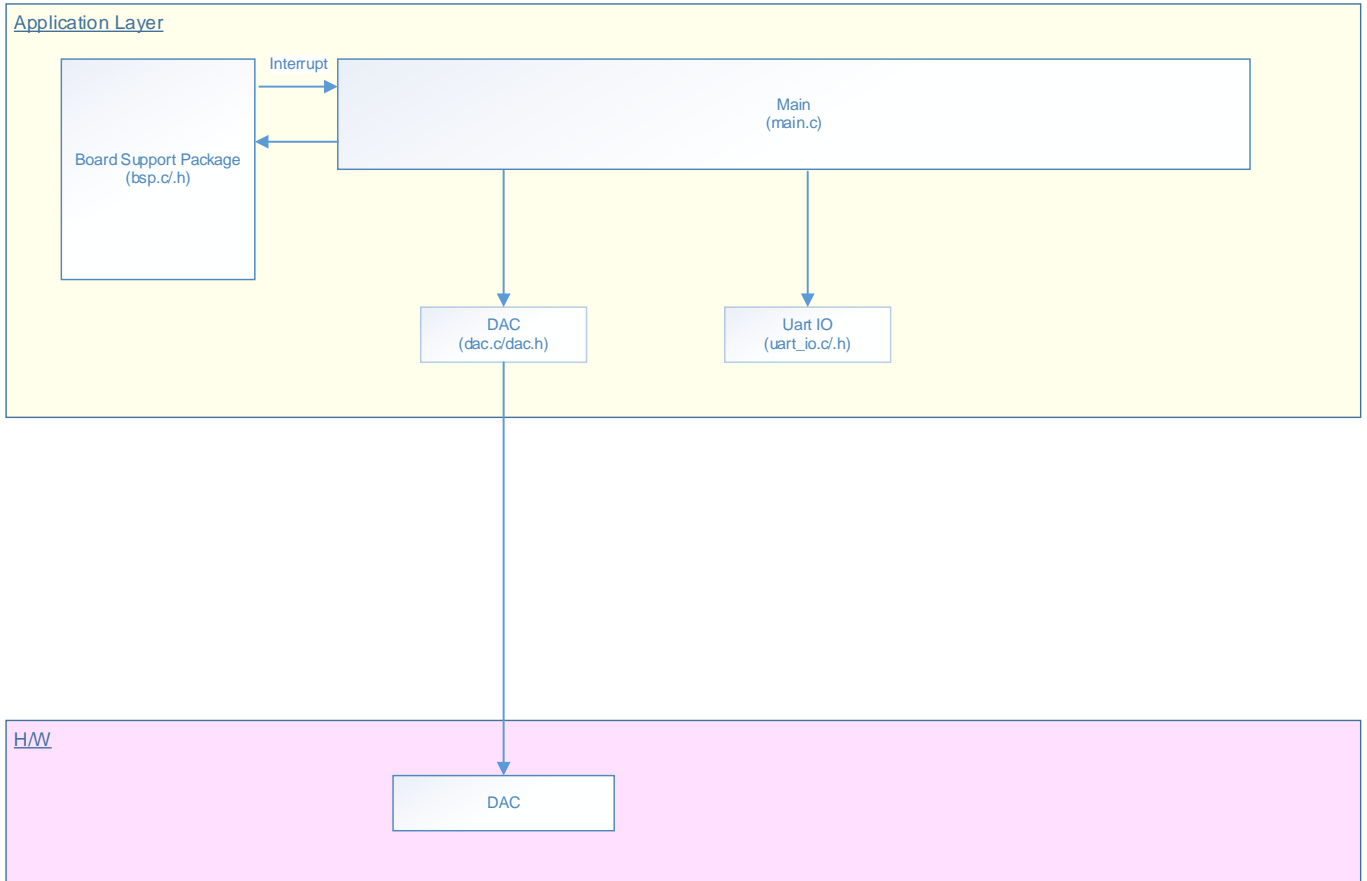
**Table of Contents**

Outlines.....	1
Table of Contents.....	2
1. Preface .....	3
2. Reference Document .....	4
3. Function to Use.....	4
4. Target Device.....	4
5. Operation Confirmation Condition .....	5
6. Evaluation Board Setting.....	6
7. Operation of Evaluation Board .....	6
8. Outline of DAC Function.....	7
9. Sample Program .....	8
9.1. Initialization .....	8
9.2. Sample Program Main Operation .....	8
9.3. Example of DAC output .....	8
9.4. Operating Flow of Sample Program .....	9
10. Precaution.....	15
11. Revision History .....	15
RESTRICTIONS ON PRODUCT USE .....	16

### 1. Preface

This sample program is used to check the operation of the DAC function.  
A received digital data is converted to an analog data, and its corresponding voltage is output.

Structure diagram of Sample program



### 2. Reference Document

- Datasheet  
     TPM4G Group (1) datasheet Rev1.0 (Japanese edition)
- Reference manual  
     8-bit Digital to Analog Converter (DAC-A) Rev2.1 (Japanese edition)  
     Asynchronous Serial Communication Circuit (UART-C) Rev3.0 (Japanese edition)
- Application Note  
     M4G Group (1) Application Note Startup (CMSIS System & Clock Configuration) Rev1.0
- Other reference document  
     TPM4G Group Peripheral Driver User Manual (Doxygen)

### 3. Function to Use

IP	Channel	Port	Function/Operation mode
Asynchronous Serial Communication Circuit	ch0	PE2 (UT0RXD) PE3 (UT0TXDA)	UART mode
8-bit Digital to Analog Converter	ch0	PT0 (DAC0)	DAC output

### 4. Target Device

The target devices of this application note are as follows;

TMPM4G9F15FG	TMPM4G9F10FG	TMPM4G9FEFG	TMPM4G9DFDG
TMPM4G9F15XBG	TMPM4G9F10XBG	TMPM4G9FEXBG	TMPM4G9FDXBG
TMPM4G8F15FG	TMPM4G8F10FG	TMPM4G8FEFG	TMPM4G8DFDG
TMPM4G8F15XBG	TMPM4G8F10XBG	TMPM4G8FEXBG	TMPM4G8FDXBG
	TMPM4G7F10FG	TMPM4G7FEFG	TMPM4G7DFDG
	TMPM4G6F10FG	TMPM4G6FEFG	TMPM4G6DFDG

\* This sample program operates on the evaluation board of TMPM4G9F15FG.

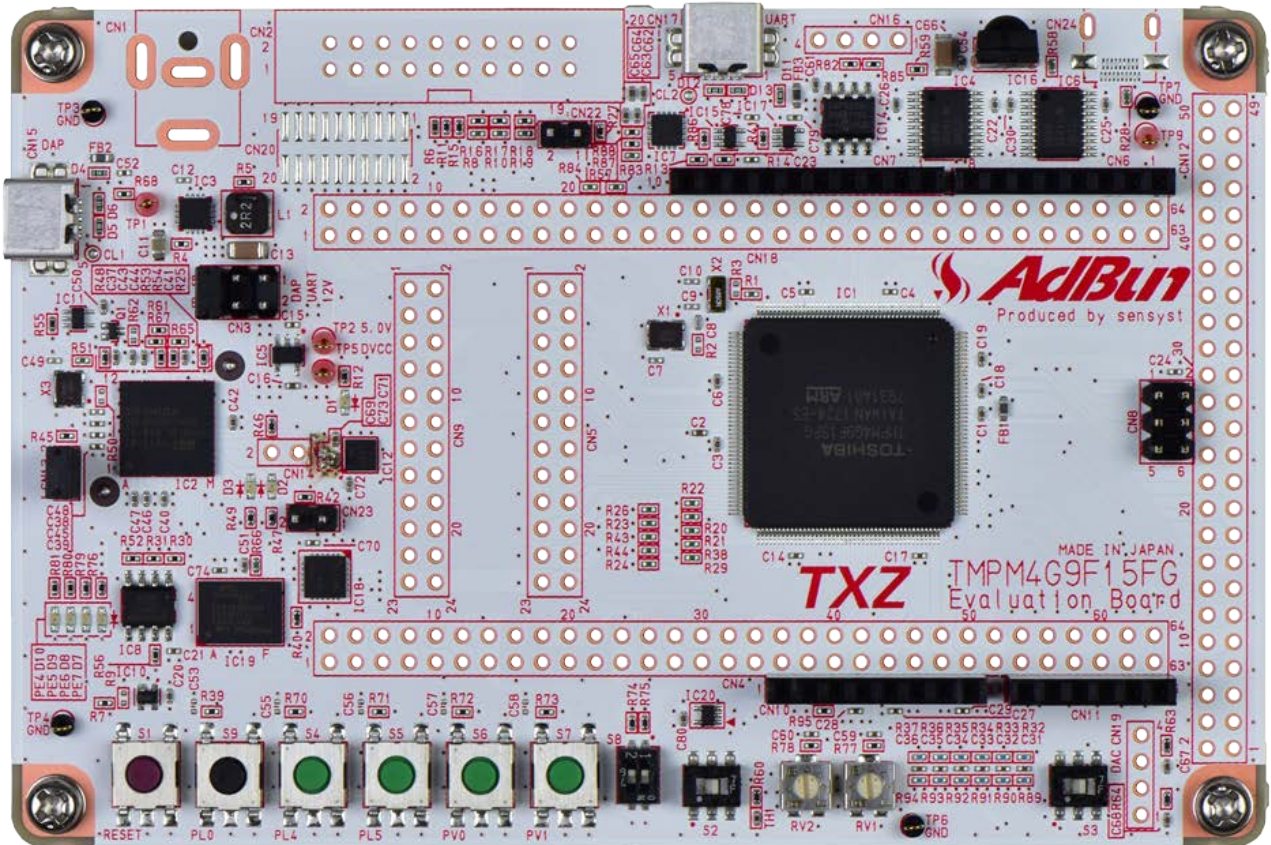
If other function than the TMPM4G9F15 one is checked, it is necessary that CMSIS Core related files (C startup file and I/O header file) should be changed properly.

The BSP related file is dedicated to the evaluation board (TMPM4G9F15). If other function than the TMPM4G9F15 one is checked, the BSP related file should be changed properly.

**5. Operation Confirmation Condition**

Used microcontroller      TMPM4G9F15FG  
 Used board                TMPM4G9F15FG Evaluation Board by Sensystr  
 Unified development environment    IAR Embedded Workbench for ARM 8.11.2.13606  
 Unified development environment    μVision MDK Version 5.24.2.0  
 Terminal software        Tera Term V4.96  
 Sample program         V1000

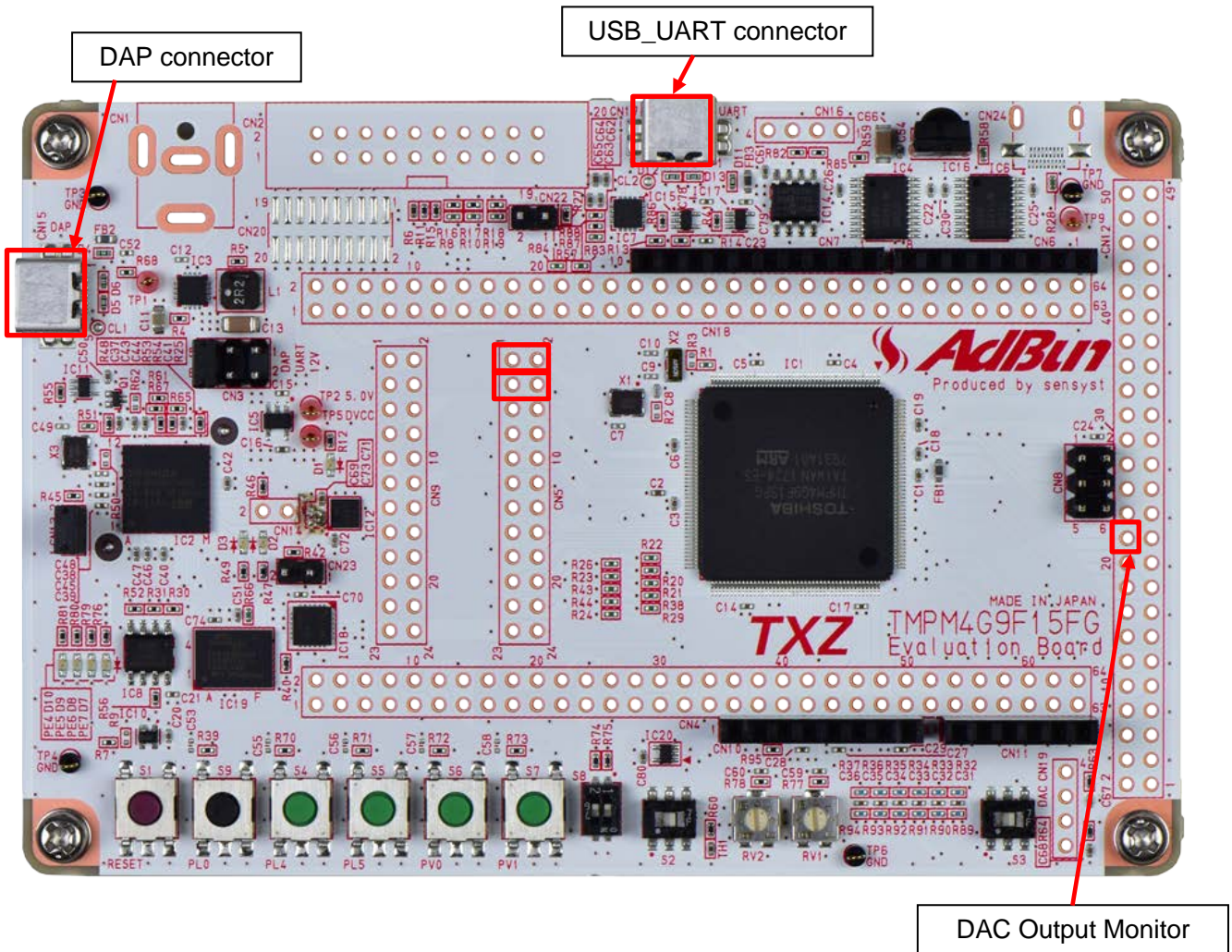
Evaluation board (TMPM4G9F15FG Evaluation Board) Top view



### 6. Evaluation Board Setting

The following pin connections should be done on the evaluation board

CN5		
Board function	Through-hole No.	Through-hole No.
USB UART conversion	1: USB_UT_RX	2: PE2
USB UART conversion	3: USB_UT_TX	4: PE3



### 7. Operation of Evaluation Board

PC and the USB\_UART are connected for communication with the terminal software.

255 or a less number should be input to the terminal software.

The input digital value is converted to an analog data, and its corresponding voltage is output on PT0.

## 8. Outline of DAC Function

8-bit digital / analog converter (DAC) builds in the DAC output circuit of one channel (DACx) per 1 unit.  
The main functions are as follows

Function category	Function	Description
DAC output	Conversion system	R-2R Resistance rudder type
	Resolution	8 bits
	Buffer amplifier	Un-built-in

## 9. Sample Program

The digital data which is transmitted by the terminal software using the UART interface is converted to analog data.

The voltage corresponding to the analog data is output on the port of DAC0.

### 9.1. Initialization

The following initialization is done after power is supplied.

The initialization of each clock setting and the setting of the watchdog timer are done.

### 9.2. Sample Program Main Operation

The initialization of BSP is executed.

The initialization of application is executed.

After data clearing is done, it becomes input state by "Input =" display.

When entering a value in terminal software, it will receive the value entered via UART.

When the input data is within the setting range, the DAC is enabled.

When it is processed normally, it returns to the input state.

If the received value is 255 or less, perform digital-to-analog conversion and output voltage.

If the received value is 256 or more, an error message is displayed in the terminal software.

### 9.3. Example of DAC output

The voltage value obtained by DA converting the digitally input value can be monitored with PT0.

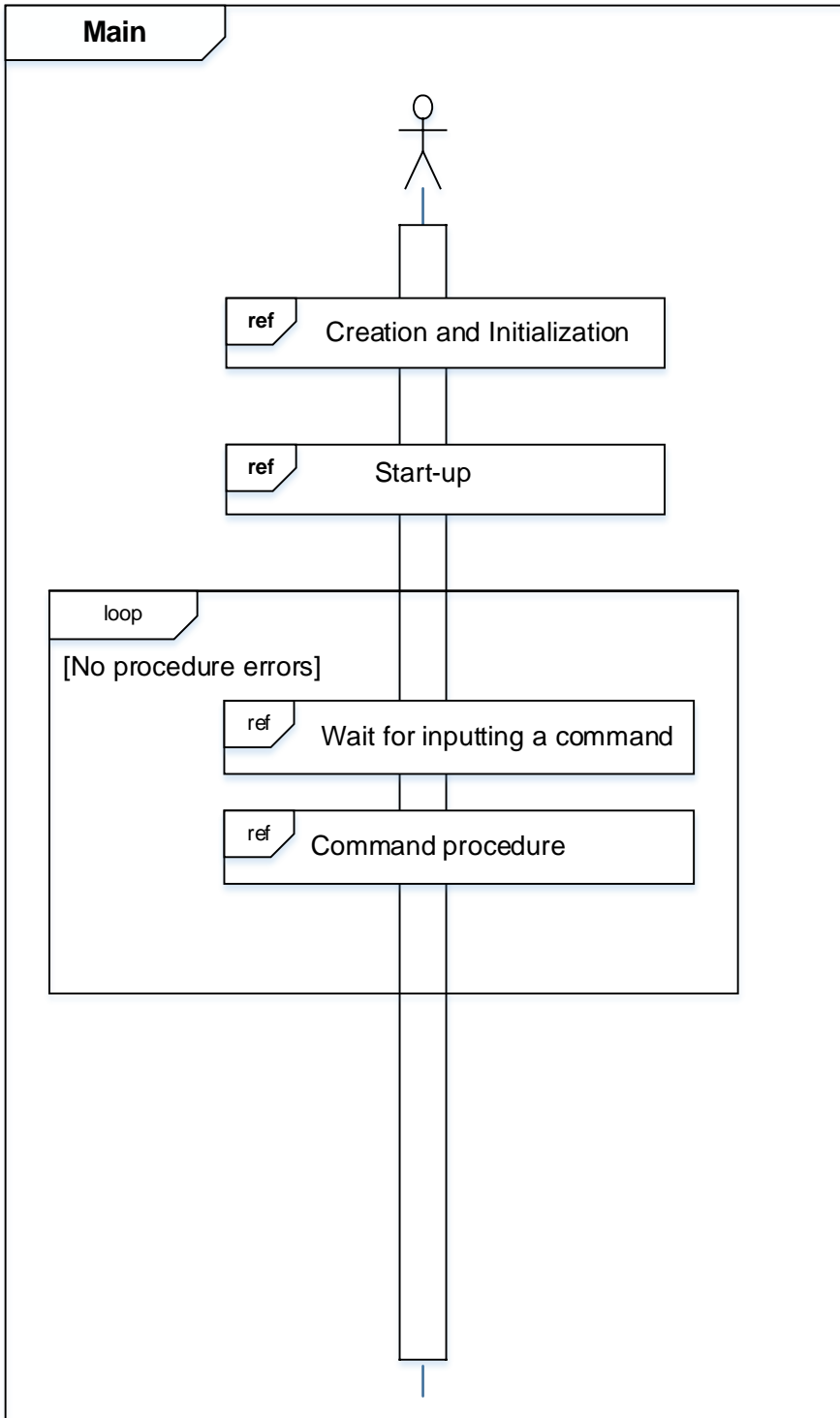
When the reference voltage is 3.3 V, the theoretical value is as follows.

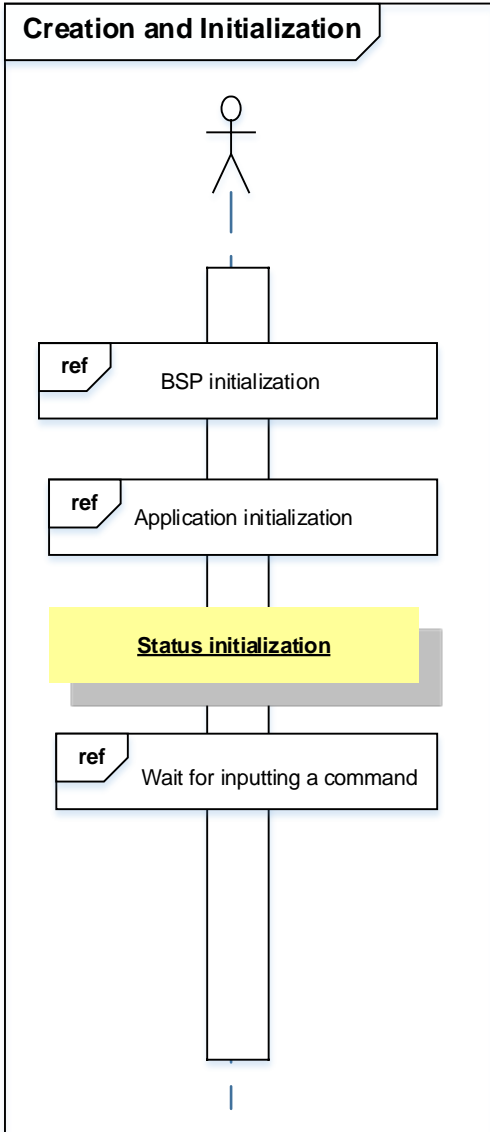
Input value	Converted voltage (Theoretical value)
0	0
63	0.812
127	1.637
192	2.475
255	3.287
256 or more	Error

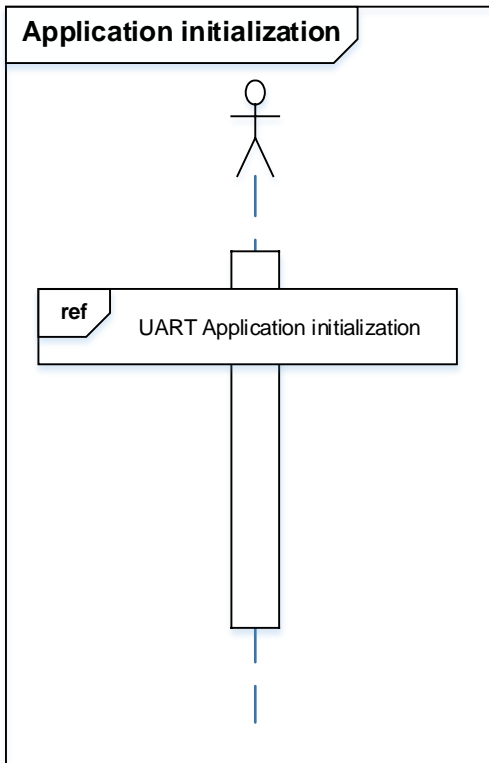


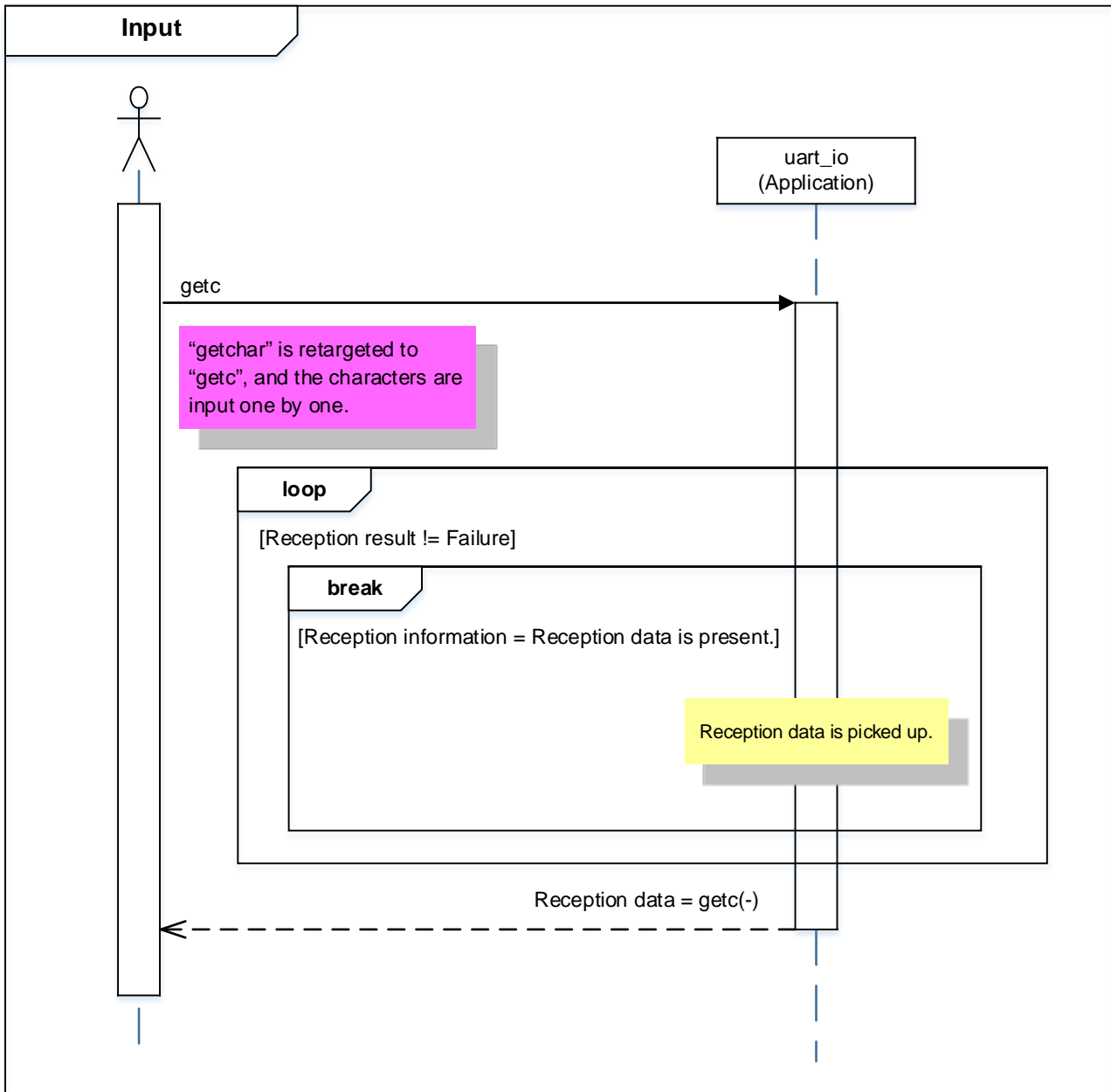
### 9.4. Operating Flow of Sample Program

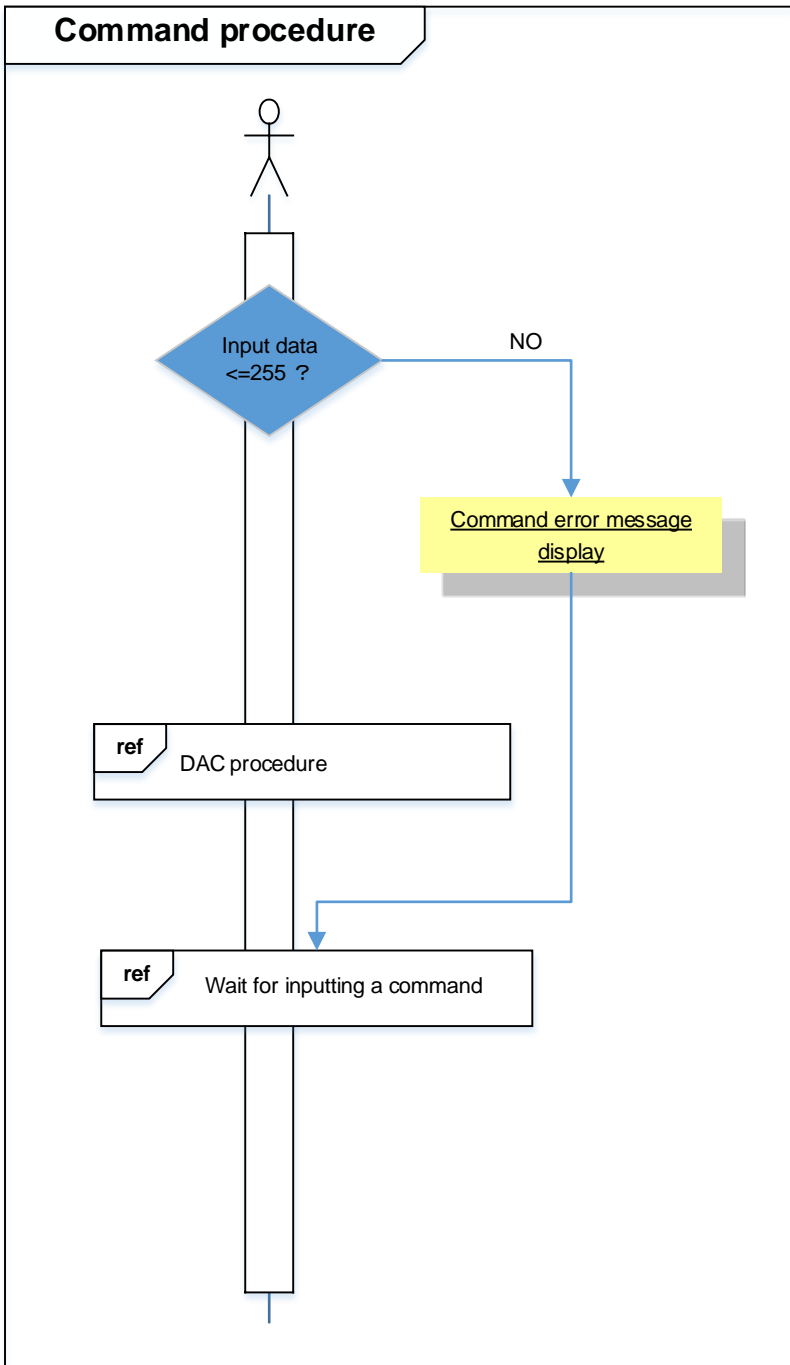
The basic operating flows of the sample program are shown in the following;

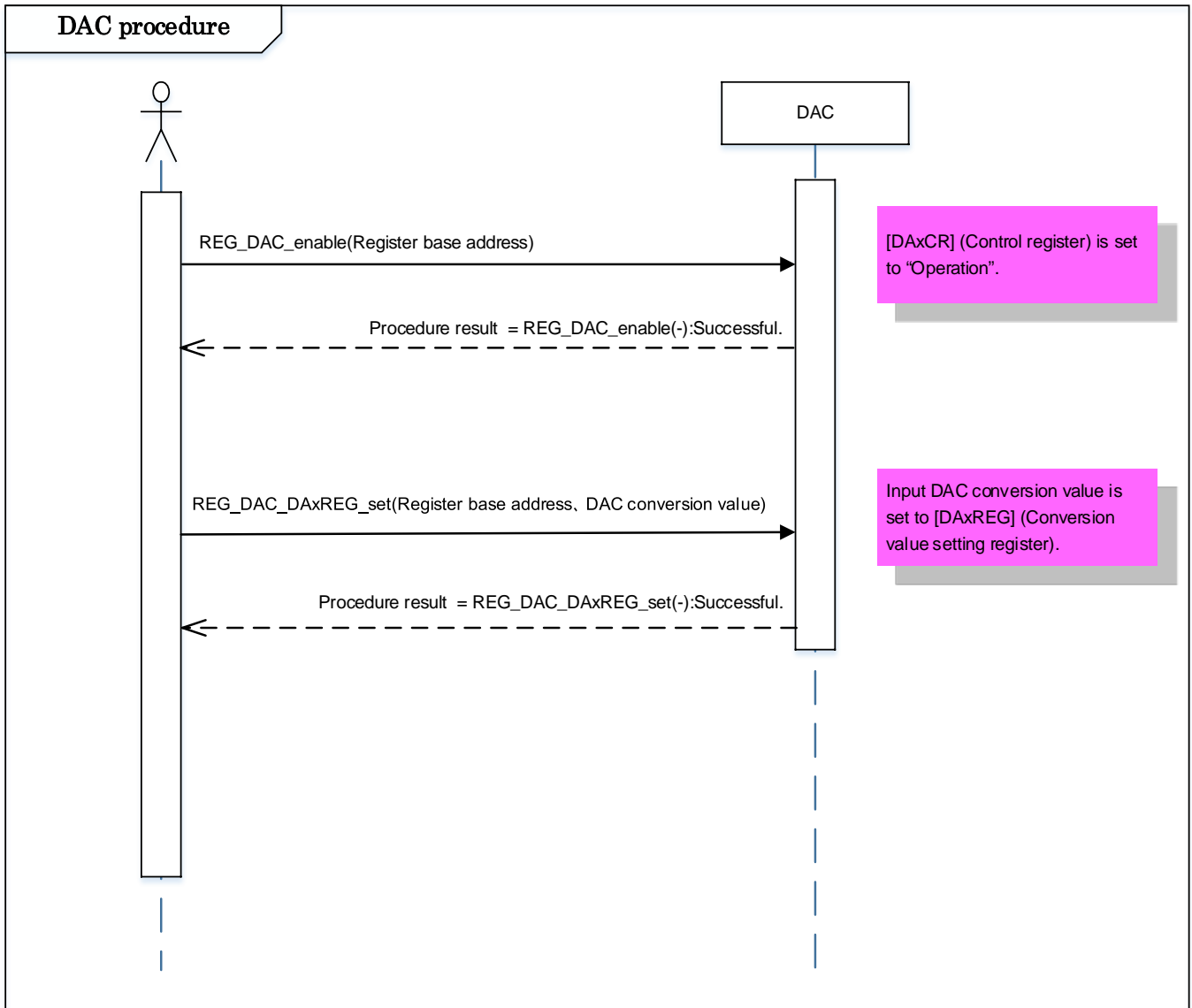












**10. Precaution**

When using the sample program with CPU other than TPM4G9F15, please check operation sufficiently.

**11. Revision History**

Rev	Date	Description
1.0	2018-11-27	First release

## RESTRICTIONS ON PRODUCT USE

Toshiba Corporation and its subsidiaries and affiliates are collectively referred to as "TOSHIBA". Hardware, software and systems described in this document are collectively referred to as "Product".

- TOSHIBA reserves the right to make changes to the information in this document and related Product without notice.
- This document and any information herein may not be reproduced without prior written permission from TOSHIBA. Even with TOSHIBA's written permission, reproduction is permissible only if reproduction is without alteration/omission.
- Though TOSHIBA works continually to improve Product's quality and reliability, Product can malfunction or fail. Customers are responsible for complying with safety standards and for providing adequate designs and safeguards for their hardware, software and systems which minimize risk and avoid situations in which a malfunction or failure of Product could cause loss of human life, bodily injury or damage to property, including data loss or corruption. Before customers use the Product, create designs including the Product, or incorporate the Product into their own applications, customers must also refer to and comply with (a) the latest versions of all relevant TOSHIBA information, including without limitation, this document, the specifications, the data sheets and application notes for Product and the precautions and conditions set forth in the "TOSHIBA Semiconductor Reliability Handbook" and (b) the instructions for the application with which the Product will be used with or for. Customers are solely responsible for all aspects of their own product design or applications, including but not limited to (a) determining the appropriateness of the use of this Product in such design or applications; (b) evaluating and determining the applicability of any information contained in this document, or in charts, diagrams, programs, algorithms, sample application circuits, or any other referenced documents; and (c) validating all operating parameters for such designs and applications. **TOSHIBA ASSUMES NO LIABILITY FOR CUSTOMERS' PRODUCT DESIGN OR APPLICATIONS.**
- **PRODUCT IS NEITHER INTENDED NOR WARRANTED FOR USE IN EQUIPMENTS OR SYSTEMS THAT REQUIRE EXTRAORDINARILY HIGH LEVELS OF QUALITY AND/OR RELIABILITY, AND/OR A MALFUNCTION OR FAILURE OF WHICH MAY CAUSE LOSS OF HUMAN LIFE, BODILY INJURY, SERIOUS PROPERTY DAMAGE AND/OR SERIOUS PUBLIC IMPACT ("UNINTENDED USE").** Except for specific applications as expressly stated in this document, Unintended Use includes, without limitation, equipment used in nuclear facilities, equipment used in the aerospace industry, lifesaving and/or life supporting medical equipment, equipment used for automobiles, trains, ships and other transportation, traffic signaling equipment, equipment used to control combustions or explosions, safety devices, elevators and escalators, and devices related to power plant. **IF YOU USE PRODUCT FOR UNINTENDED USE, TOSHIBA ASSUMES NO LIABILITY FOR PRODUCT.** For details, please contact your TOSHIBA sales representative or contact us via our website.
- Product shall not be used for or incorporated into any products or systems whose manufacture, use, or sale is prohibited under any applicable laws or regulations.
- The information contained herein is presented only as guidance for Product use. No responsibility is assumed by TOSHIBA for any infringement of patents or any other intellectual property rights of third parties that may result from the use of Product. No license to any intellectual property right is granted by this document, whether express or implied, by estoppel or otherwise.
- **ABSENT A WRITTEN SIGNED AGREEMENT, EXCEPT AS PROVIDED IN THE RELEVANT TERMS AND CONDITIONS OF SALE FOR PRODUCT, AND TO THE MAXIMUM EXTENT ALLOWABLE BY LAW, TOSHIBA (1) ASSUMES NO LIABILITY WHATSOEVER, INCLUDING WITHOUT LIMITATION, INDIRECT, CONSEQUENTIAL, SPECIAL, OR INCIDENTAL DAMAGES OR LOSS, INCLUDING WITHOUT LIMITATION, LOSS OF PROFITS, LOSS OF OPPORTUNITIES, BUSINESS INTERRUPTION AND LOSS OF DATA, AND (2) DISCLAIMS ANY AND ALL EXPRESS OR IMPLIED WARRANTIES AND CONDITIONS RELATED TO SALE, USE OF PRODUCT, OR INFORMATION, INCLUDING WARRANTIES OR CONDITIONS OF MERCHANTABILITY, FITNESS FOR A PARTICULAR PURPOSE, ACCURACY OF INFORMATION, OR NONINFRINGEMENT.**
- Do not use or otherwise make available Product or related software or technology for any military purposes, including without limitation, for the design, development, use, stockpiling or manufacturing of nuclear, chemical, or biological weapons or missile technology products (mass destruction weapons). Product and related software and technology may be controlled under the applicable export laws and regulations including, without limitation, the Japanese Foreign Exchange and Foreign Trade Law and the U.S. Export Administration Regulations. Export and re-export of Product or related software or technology are strictly prohibited except in compliance with all applicable export laws and regulations.
- Please contact your TOSHIBA sales representative for details as to environmental matters such as the RoHS compatibility of Product. Please use Product in compliance with all applicable laws and regulations that regulate the inclusion or use of controlled substances, including without limitation, the EU RoHS Directive. **TOSHIBA ASSUMES NO LIABILITY FOR DAMAGES OR LOSSES OCCURRING AS A RESULT OF NONCOMPLIANCE WITH APPLICABLE LAWS AND REGULATIONS.**