

M4G Group (1)
Application Note
External Bus Interface
(EBIF-A)

Outlines

This application note is a reference material for developing products using External bus interface (EBIF) function of M4G group (1).

This document helps the user check operation of the product and develop its program.

Target sample program: EBIF_SRAM

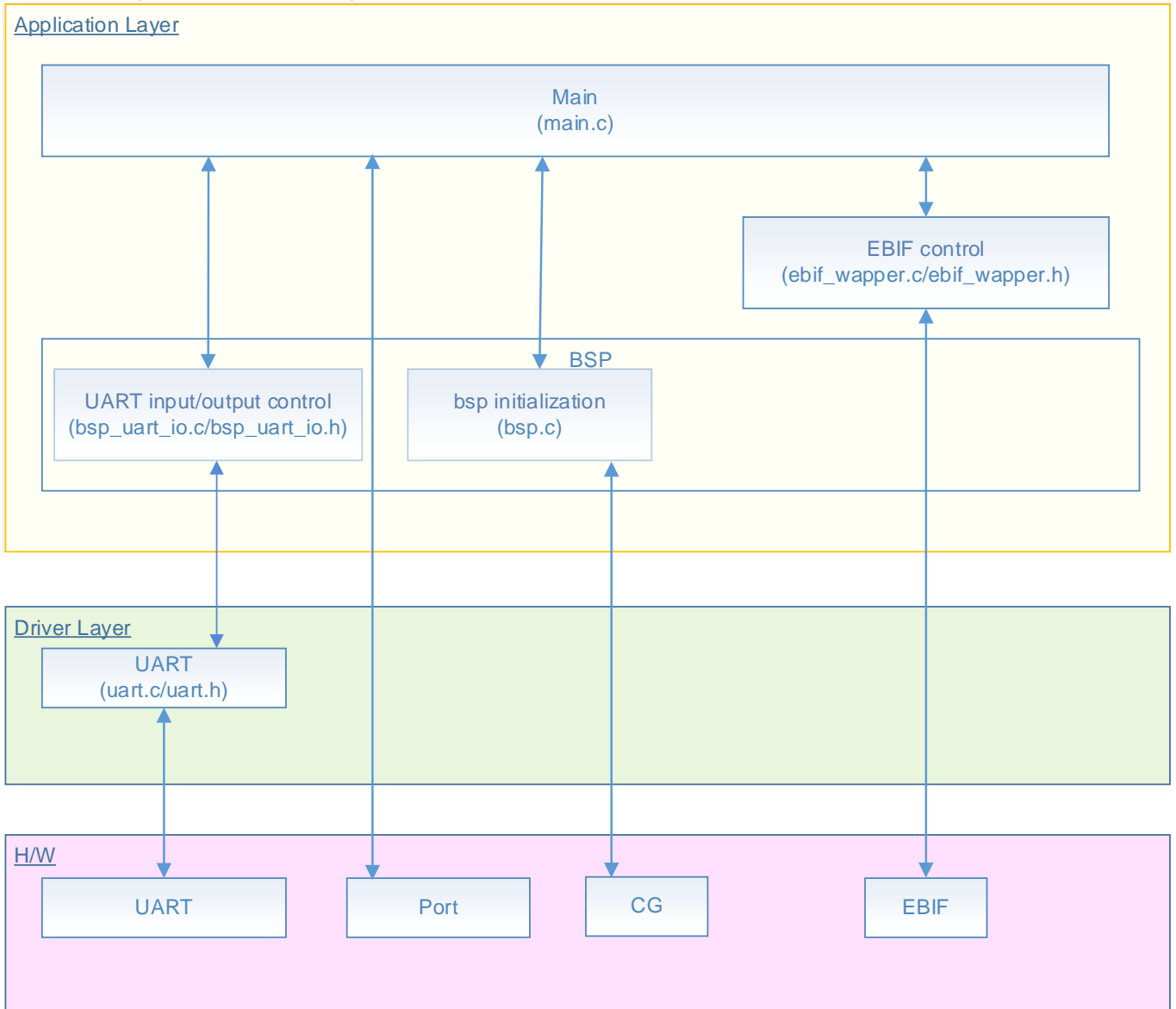
Table of Contents

Outlines.....	1
Table of Contents.....	2
1. Preface	3
2. Reference Document	4
3. Function to Use.....	4
4. Target Device.....	4
5. Operation confirmation condition.....	5
6. Evaluation Board Setting.....	5
7. Outline of External Bus Interface Function	6
8. Sample Program	7
8.1. Initialization	7
8.2. Sample Program Main Operation	7
8.3. Output Example of Sample Program.....	8
8.3.1. Setting Example of Terminal Software.....	8
8.4. Operating Flow of Sample Program	9
9. Precaution.....	13
10. Revision History	13
RESTRICTIONS ON PRODUCT USE	14

1. Preface

This sample program should be used to check the operation of the External bus interface.

Structure diagram of Sample program



2. Reference Document

- Datasheet
TMPM4G Group (1) datasheet Rev1.0 (Japanese edition)
- Reference manual
External Bus Interface (EBIF-A) Rev1.0 (Japanese edition)
Asynchronous Serial Communication Circuit (UART-C) Rev3.0 (Japanese edition)
- Application note
M4G Group (1) Application Note Startup (CMSIS System & Clock Configuration) Rev1.0
- Other reference document
TMPM4G (1) Group Peripheral Driver User Manual (Doxygen)

3. Function to Use

IP	Channel	Port	Function/Operation mode
External Bus Interface	-	PD[7:0] (ED07-ED00) PE[7:0] (ED15-ED08) PC[2:0] (EA18-EA16) PK3 (ECS1_N) PF0 (ERD_N) PF1 (EWR_N) PF6 (EBELL_N) PF7 (EBELH_N)	Multiplex bus
Asynchronous Serial Communication Circuit	ch1	PH0 (UT1TXDA) PH1 (UT1RXD)	UART mode

4. Target Device

The target devices of this application note are as follows;

TMPM4G9F15FG	TMPM4G9F10FG	TMPM4G9FEFG	TMPM4G9FDFG
TMPM4G9F15XBG	TMPM4G9F10XBG	TMPM4G9FEXBG	TMPM4G9FDXBG
TMPM4G8F15FG	TMPM4G8F10FG	TMPM4G8FEFG	TMPM4G8FDFG
TMPM4G8F15XBG	TMPM4G8F10XBG	TMPM4G8FEXBG	TMPM4G8FDXBG
	TMPM4G7F10FG	TMPM4G7FEFG	TMPM4G7FDFG
	TMPM4G6F10FG	TMPM4G6FEFG	TMPM4G6FDFG

* This sample program operates on the evaluation board of TMPM4G9F15FG.

If other function than the TMPM4G9F15 one is checked, it is necessary that CMSIS Core related files (C startup file and I/O header file) should be changed properly.

The BSP related file is dedicated to the evaluation board (TMPM4G9F15). If other function than the TMPM4G9F15 one is checked, the BSP related file should be changed properly.

5. Operation confirmation condition

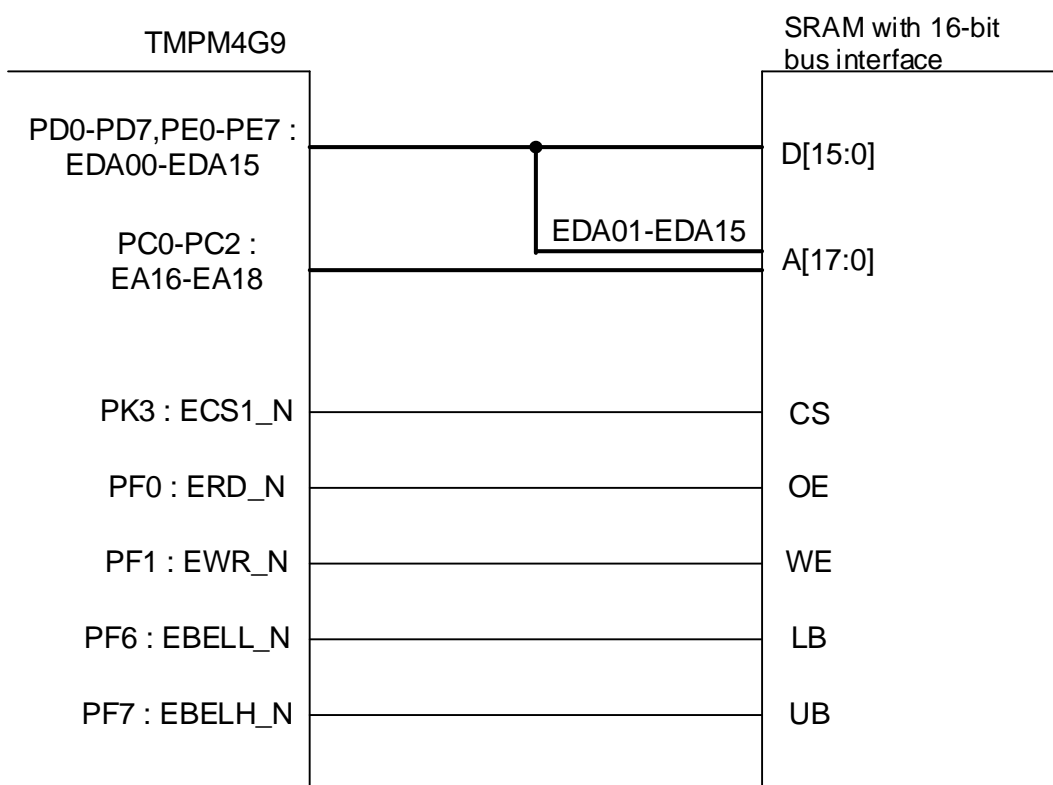
Used microcontroller	TMPM4G9F15FG
Used board	TMPM4G Evaluation Board (Not for sale)
Unified development environment	IAR Embedded Workbench for ARM 8.11.2.13606
Unified development environment	µVision MDK Version 5.24.2.0
Terminal software	Tera Term V4.96
Sample program	V1000

6. Evaluation Board Setting

The external SRAM device should be connected to TMPM4G9F15FG.
 The sample program has been checked in the synchronous multiplex mode.

A connection example is shown in the following figure.

Used SRAM device: IS62WV5126BLL-55TLI



7. Outline of External Bus Interface Function

External bus interface (EBIF) is interface to connect to memory and I/Os external of MCU. These features are shown in the following table.

Function classification	Function	Operation explanation
Connection specification	Support Devices	NOR Flash memory, SRAM, Peripheral I/O, etc.
	Mode	Separate bus mode, Multiplexed bus mode
	Data bus width	Either an 8-bit or 16-bit width can be set for each channel.
Memory allocation	Address access area	Supports up to 64MB memory area 0x60000000 to 0x63FFFFFF (Max. 16MB for each CS)
	CS control	4 channels (ECS0_N pin, ECS1_N pin, ECS2_N pin, ECS3_N pin)
External bus control	Clock output	This function can output clock synchronizing with bus cycles.
	Internal wait function	A wait can be inserted up to 15 cycles for each channel.
	External wait function	In addition to the internal wait function, the wait cycle can be extended by EWAIT_N pin.
		Active "Low" or active "High" is selectable.
	ALE assert time setting function	An assert time can be selected from 1, 2, 3, or 5 cycles for each channel.
	Setup cycle insertion function	Read or Write setup cycle can be inserted for each channel.
	Recovery cycle insertion function	In consecutive external bus cycles, a dummy cycle up to 8 clocks can be inserted and this dummy cycle can be specified for each channel.
		Address/ data hold cycle insertion at ECSn_N pin, ERD_N pin, EWR_N pin
Bus expansion function	Internal wait, ALE assert time, Setup cycle and Recovery cycle can be expanded double or quadruple. (Used in common in all channels)	

8. Sample Program

Input write or read command format to Tera Term.

In the case of the write command, the input character is saved in the SRAM.

In the case of the read command, it reads the data saved in SRAM and displays it in Tera Term.

8.1. Initialization

The following initialization is done after power is supplied.

The initialization of each clock setting and the setting of the watchdog timer are done.

8.2. Sample Program Main Operation

After the initialization operation, shift to the main function and do the following initialization.

1. Initialization of BSP (Board Support Package)
2. Initialization of the ports for the EBIF
3. Initialization of EBIF registers
4. Initialization of the application
5. Initialization of memory

After the procedure above has been done, the following operation should be done on the terminal software (Tera Term) on the PC.

"command >" is displayed on the Tera Term. The "write" command or the "read" command should be input according to the following format.

"write" command: The input character is stored to the address of 0x61000000 (SRAM address: 0x000000).

"read" command: The data stored in the address of 0x61000000 (SRAM address: 0x000000) is read, and the data is displayed on the Tera Term.

• Command format:

"write" command

write _X

X: Any character

"read" command

read

Used memory device	SRAM: IS62WV5126BLL-55TLI
--------------------	---------------------------

8.3. Output Example of Sample Program

When the sample program executes, the command result is output as shown in the following figure.

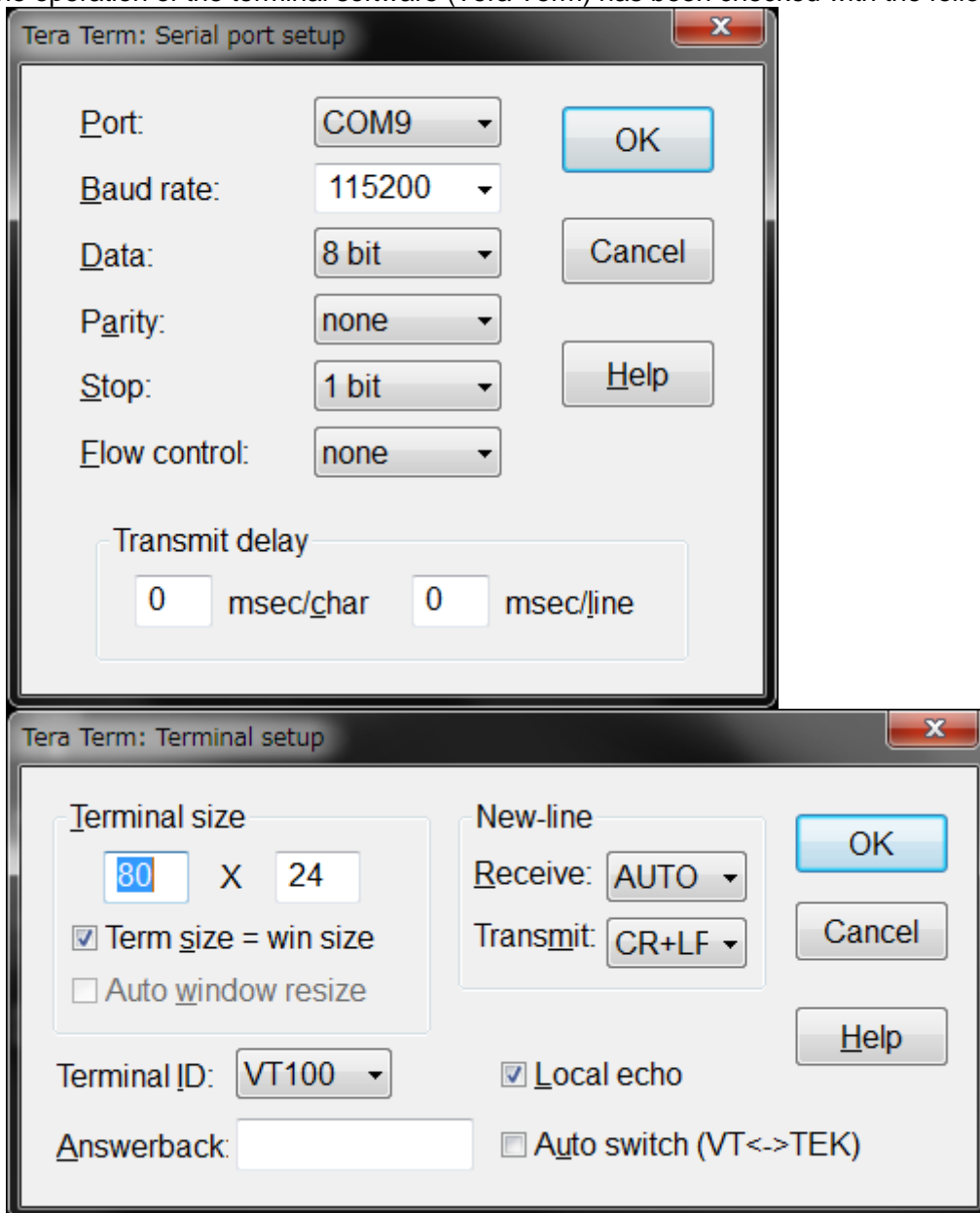
```
command > write a
write data > a

command > read
read data > a

command >
```

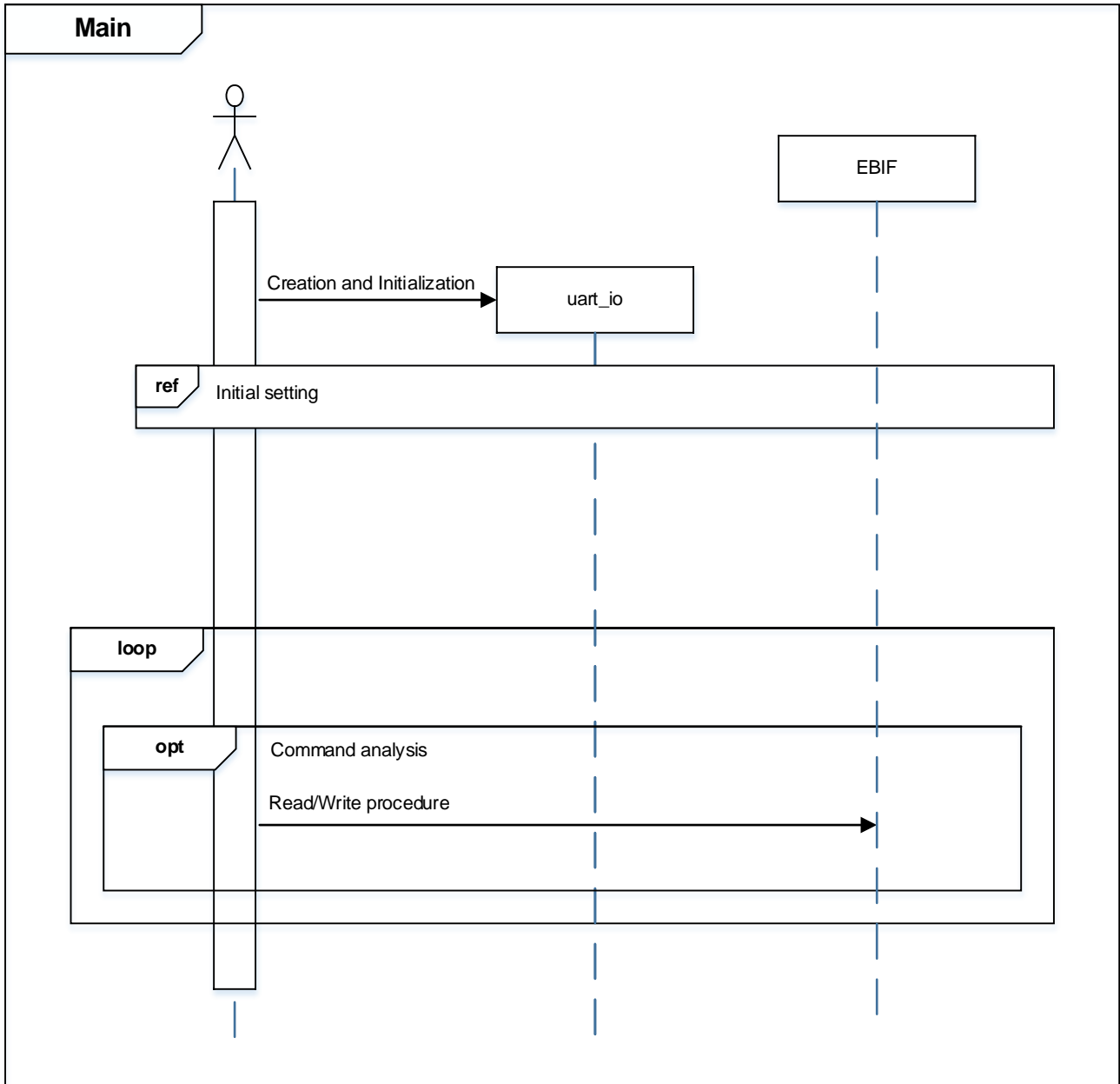
8.3.1. Setting Example of Terminal Software

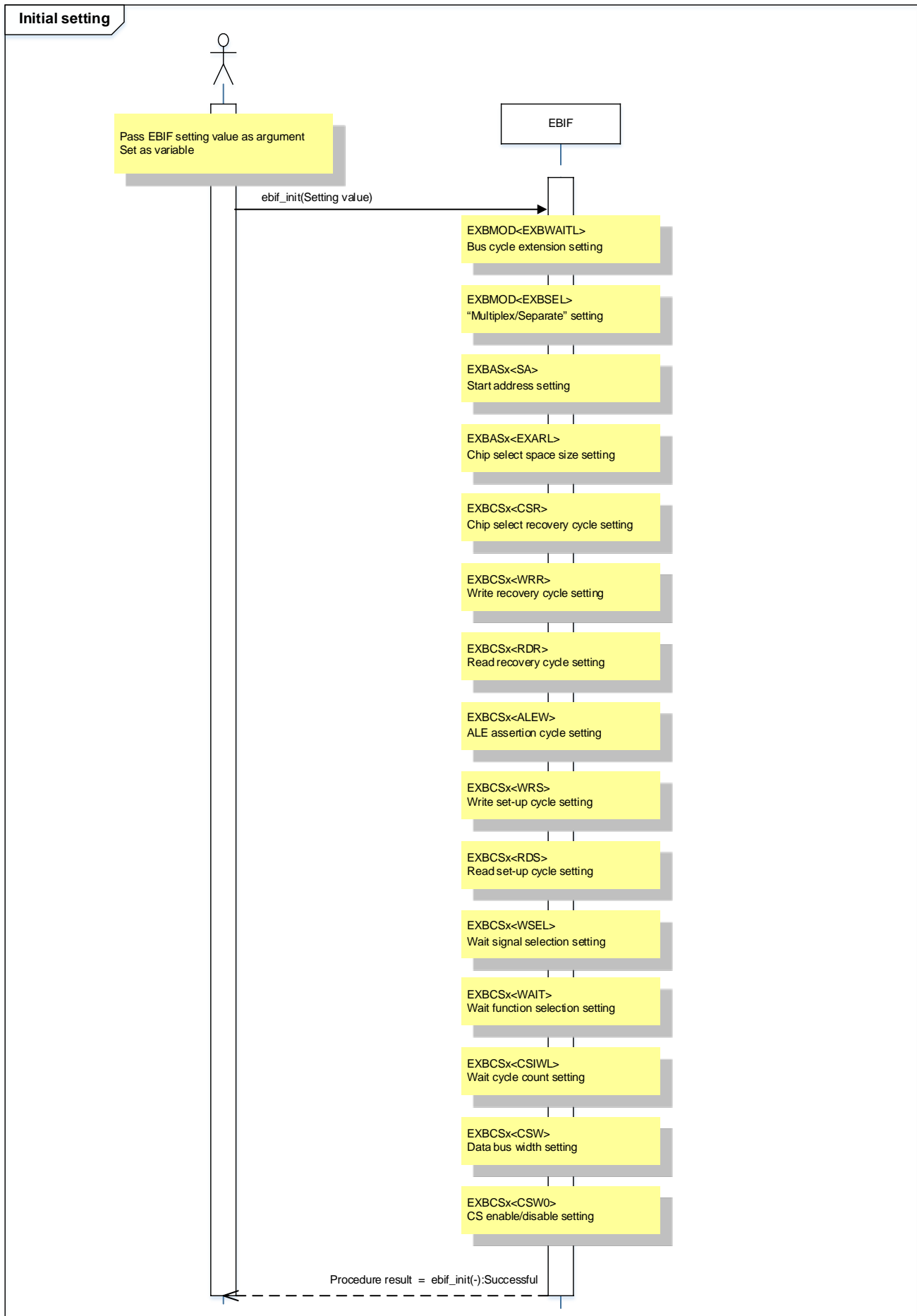
The operation of the terminal software (Tera Term) has been checked with the following settings.

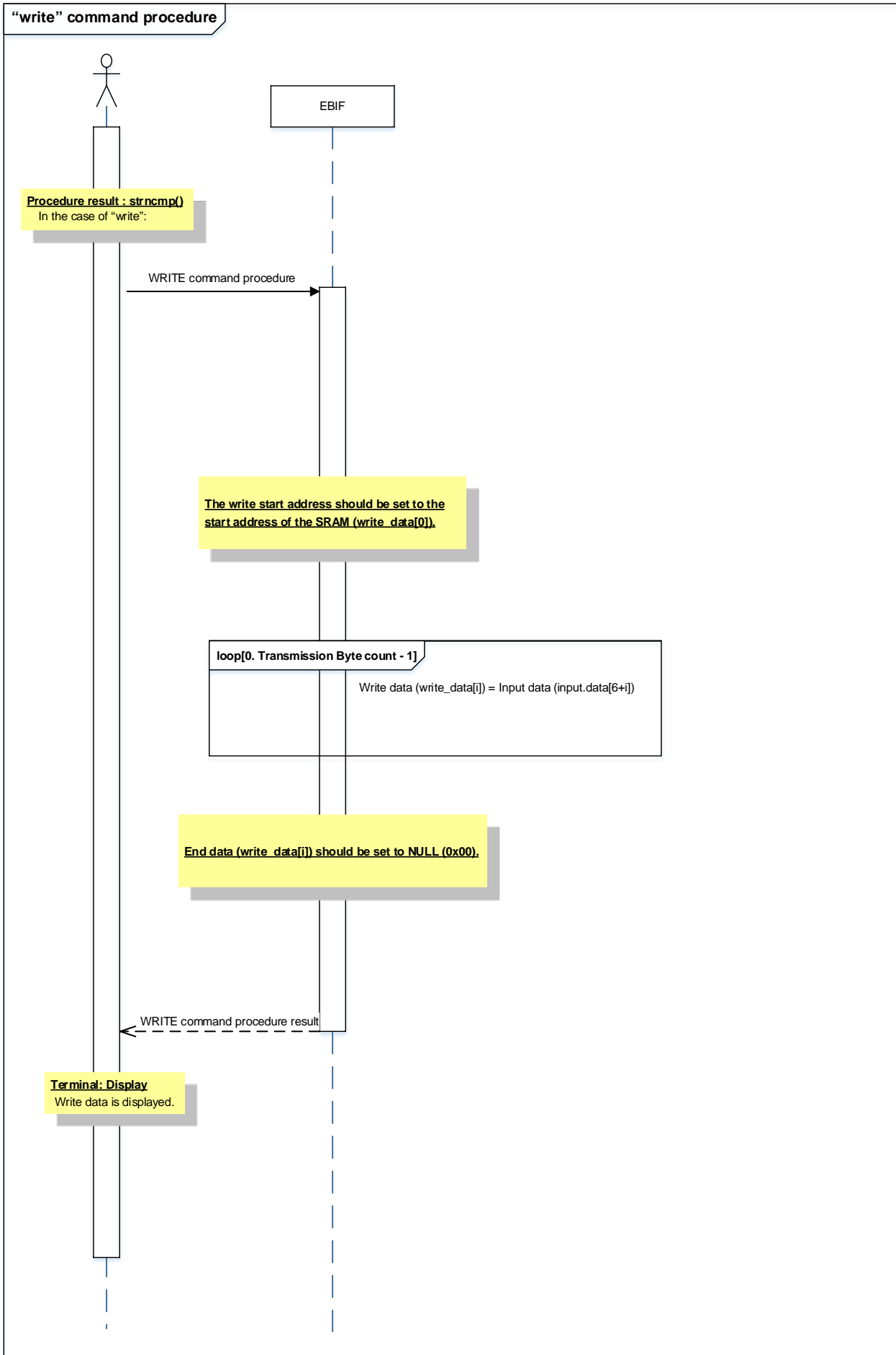


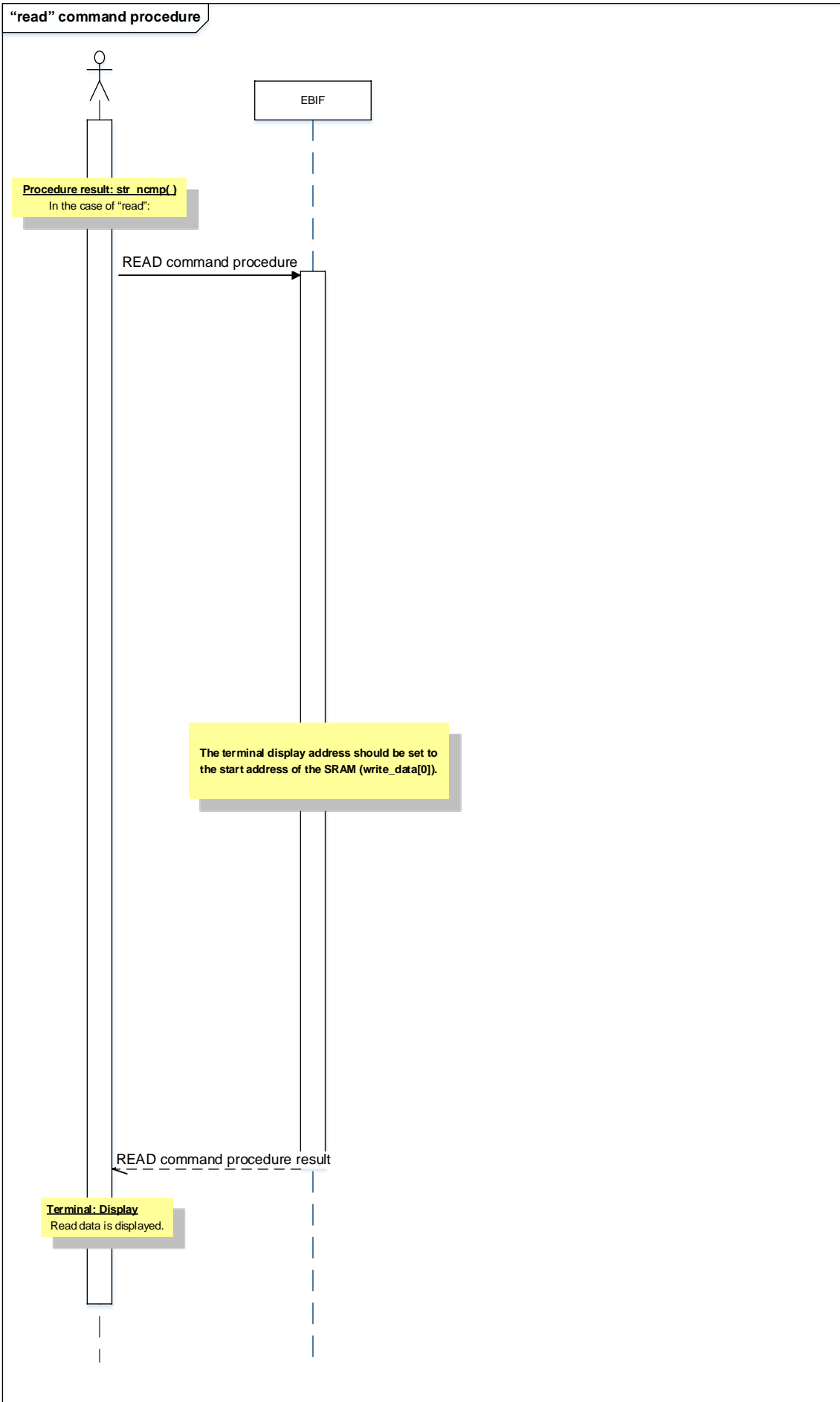
8.4. Operating Flow of Sample Program

The basic operating flows of the sample program are shown in the following;









9. Precaution

When using the sample program with CPU other than TPM4G9F15, please check operation sufficiently.

10. Revision History

Rev	Date	Description
1.0	2018-11-27	First release

RESTRICTIONS ON PRODUCT USE

Toshiba Corporation and its subsidiaries and affiliates are collectively referred to as "TOSHIBA". Hardware, software and systems described in this document are collectively referred to as "Product".

- TOSHIBA reserves the right to make changes to the information in this document and related Product without notice.
- This document and any information herein may not be reproduced without prior written permission from TOSHIBA. Even with TOSHIBA's written permission, reproduction is permissible only if reproduction is without alteration/omission.
- Though TOSHIBA works continually to improve Product's quality and reliability, Product can malfunction or fail. Customers are responsible for complying with safety standards and for providing adequate designs and safeguards for their hardware, software and systems which minimize risk and avoid situations in which a malfunction or failure of Product could cause loss of human life, bodily injury or damage to property, including data loss or corruption. Before customers use the Product, create designs including the Product, or incorporate the Product into their own applications, customers must also refer to and comply with (a) the latest versions of all relevant TOSHIBA information, including without limitation, this document, the specifications, the data sheets and application notes for Product and the precautions and conditions set forth in the "TOSHIBA Semiconductor Reliability Handbook" and (b) the instructions for the application with which the Product will be used with or for. Customers are solely responsible for all aspects of their own product design or applications, including but not limited to (a) determining the appropriateness of the use of this Product in such design or applications; (b) evaluating and determining the applicability of any information contained in this document, or in charts, diagrams, programs, algorithms, sample application circuits, or any other referenced documents; and (c) validating all operating parameters for such designs and applications. **TOSHIBA ASSUMES NO LIABILITY FOR CUSTOMERS' PRODUCT DESIGN OR APPLICATIONS.**
- **PRODUCT IS NEITHER INTENDED NOR WARRANTED FOR USE IN EQUIPMENTS OR SYSTEMS THAT REQUIRE EXTRAORDINARILY HIGH LEVELS OF QUALITY AND/OR RELIABILITY, AND/OR A MALFUNCTION OR FAILURE OF WHICH MAY CAUSE LOSS OF HUMAN LIFE, BODILY INJURY, SERIOUS PROPERTY DAMAGE AND/OR SERIOUS PUBLIC IMPACT ("UNINTENDED USE").** Except for specific applications as expressly stated in this document, Unintended Use includes, without limitation, equipment used in nuclear facilities, equipment used in the aerospace industry, lifesaving and/or life supporting medical equipment, equipment used for automobiles, trains, ships and other transportation, traffic signaling equipment, equipment used to control combustions or explosions, safety devices, elevators and escalators, and devices related to power plant. **IF YOU USE PRODUCT FOR UNINTENDED USE, TOSHIBA ASSUMES NO LIABILITY FOR PRODUCT.** For details, please contact your TOSHIBA sales representative or contact us via our website.
- Product shall not be used for or incorporated into any products or systems whose manufacture, use, or sale is prohibited under any applicable laws or regulations.
- The information contained herein is presented only as guidance for Product use. No responsibility is assumed by TOSHIBA for any infringement of patents or any other intellectual property rights of third parties that may result from the use of Product. No license to any intellectual property right is granted by this document, whether express or implied, by estoppel or otherwise.
- **ABSENT A WRITTEN SIGNED AGREEMENT, EXCEPT AS PROVIDED IN THE RELEVANT TERMS AND CONDITIONS OF SALE FOR PRODUCT, AND TO THE MAXIMUM EXTENT ALLOWABLE BY LAW, TOSHIBA (1) ASSUMES NO LIABILITY WHATSOEVER, INCLUDING WITHOUT LIMITATION, INDIRECT, CONSEQUENTIAL, SPECIAL, OR INCIDENTAL DAMAGES OR LOSS, INCLUDING WITHOUT LIMITATION, LOSS OF PROFITS, LOSS OF OPPORTUNITIES, BUSINESS INTERRUPTION AND LOSS OF DATA, AND (2) DISCLAIMS ANY AND ALL EXPRESS OR IMPLIED WARRANTIES AND CONDITIONS RELATED TO SALE, USE OF PRODUCT, OR INFORMATION, INCLUDING WARRANTIES OR CONDITIONS OF MERCHANTABILITY, FITNESS FOR A PARTICULAR PURPOSE, ACCURACY OF INFORMATION, OR NONINFRINGEMENT.**
- Do not use or otherwise make available Product or related software or technology for any military purposes, including without limitation, for the design, development, use, stockpiling or manufacturing of nuclear, chemical, or biological weapons or missile technology products (mass destruction weapons). Product and related software and technology may be controlled under the applicable export laws and regulations including, without limitation, the Japanese Foreign Exchange and Foreign Trade Law and the U.S. Export Administration Regulations. Export and re-export of Product or related software or technology are strictly prohibited except in compliance with all applicable export laws and regulations.
- Please contact your TOSHIBA sales representative for details as to environmental matters such as the RoHS compatibility of Product. Please use Product in compliance with all applicable laws and regulations that regulate the inclusion or use of controlled substances, including without limitation, the EU RoHS Directive. **TOSHIBA ASSUMES NO LIABILITY FOR DAMAGES OR LOSSES OCCURRING AS A RESULT OF NONCOMPLIANCE WITH APPLICABLE LAWS AND REGULATIONS.**