

M4G Group (1)
Application Note
Voltage Detection Circuit
(LVD-C)

Outlines

This application note is a reference material for developing products using voltage detection circuit (LVD) function of M4G Group (1). This document helps the user check operation of the product and develop its program.

Target sample program: LVD_DEMO_M4G9

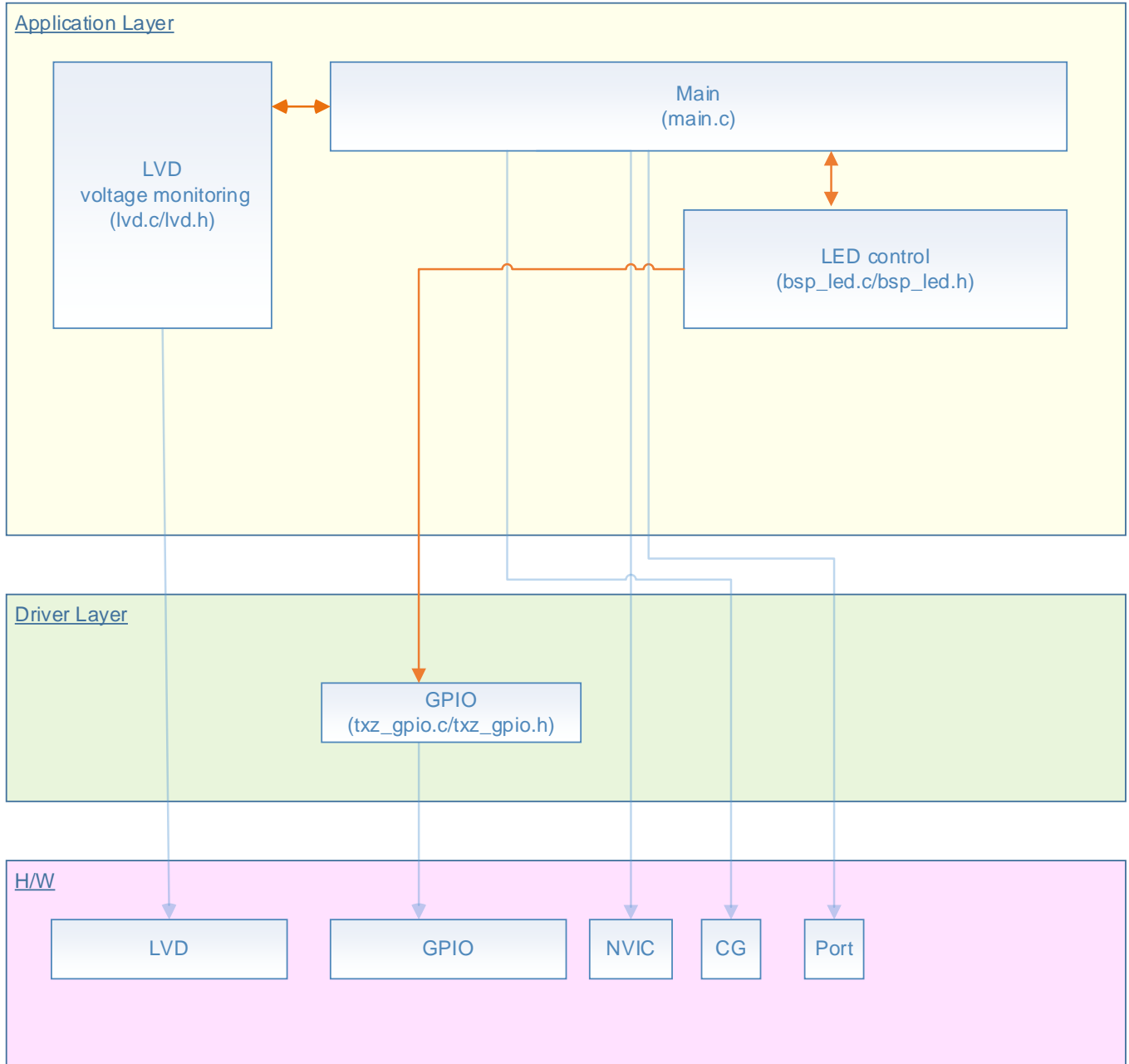
Table of Contents

Outlines.....	1
Table of Contents.....	2
1. Preface	3
2. Reference Document	4
3. Function to Use.....	4
4. Target Device.....	4
5. Operation Confirmation Condition	5
6. Evaluation Board Setting.....	6
7. Operation of Evaluation Board	6
8. Outline of LVD function	7
9. Sample Program	8
9.1. Initialization	8
9.2. Sample Program Main Operation.....	8
9.3. Detection Voltage Setting	8
9.4. Operating Flow of Sample Program	9
10. Precaution.....	16
11. Revision History	16
RESTRICTIONS ON PRODUCT USE	17

1. Preface

This sample program should be used to check the operation of the voltage detection circuit. The voltage value of the power supply is detected. The lighting and the lights-out of the LED are controlled by the detection result.

Structure diagram of Sample program



2. Reference Document

- Datasheet
 TPM4G Group (1) datasheet Rev1.0 (Japanese edition)
- Reference manual
 Voltage Detection Circuit (LVD-C) Rev2.0 (Japanese edition)
 Input/Output Ports (PORT-M4G (1)) Rev1.0 (Japanese edition)
 32-bit Timer Event Counter (T32A-B) Rev2.1 (Japanese edition)
- Application note
 M4G Group (1) Application Note Startup (CMSIS System & Clock Configuration) Rev1.0
- Other reference document
 TPM4G (1) Group Peripheral Driver User Manual (Doxygen)

3. Function to Use

IP	Channel	Port	Function/Operation mode
Voltage Detection Circuit	-	-	Voltage detection of a power supply
32-bit Timer Event Counter	Timer A ch0	-	Interval timer
Input/Output Ports	-	PE4 (Output port)	Output
	-	PE6 (Output port)	

4. Target Device

The target devices of this application note are as follows;

TMPM4G9F15FG	TMPM4G9F10FG	TMPM4G9FEFG	TMPM4G9FDFG
TMPM4G9F15XBG	TMPM4G9F10XBG	TMPM4G9FEXBG	TMPM4G9FDXBG
TMPM4G8F15FG	TMPM4G8F10FG	TMPM4G8FEFG	TMPM4G8FDFG
TMPM4G8F15XBG	TMPM4G8F10XBG	TMPM4G8FEXBG	TMPM4G8FDXBG
	TMPM4G7F10FG	TMPM4G7FEFG	TMPM4G7FDFG
	TMPM4G6F10FG	TMPM4G6FEFG	TMPM4G6FDFG

* This sample program operates on the evaluation board of TMPM4G9F15FG.

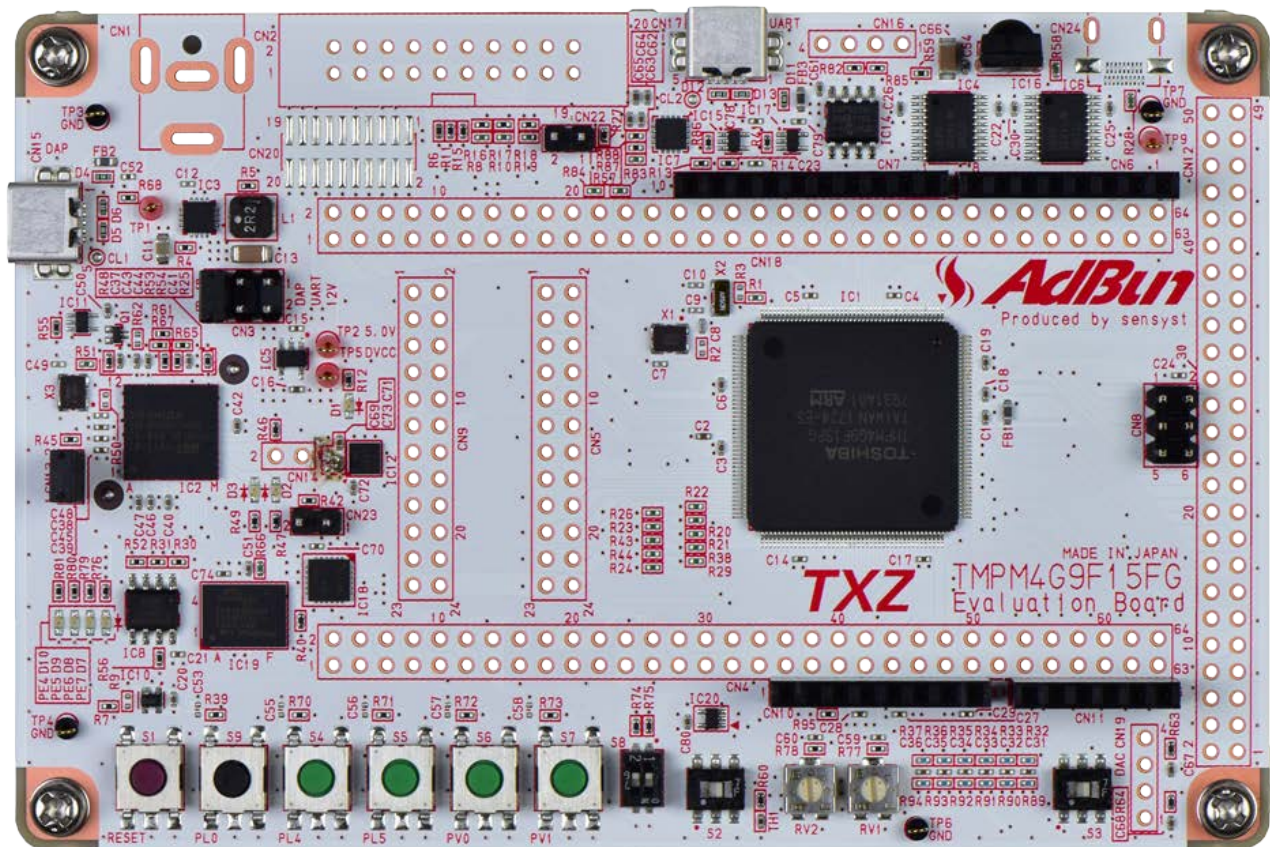
If other function than the TMPM4G9F15 one is checked, it is necessary that CMSIS Core related files (C startup file and I/O header file) should be changed properly.

The BSP related file is dedicated to the evaluation board (TMPM4G9F15). If other function than the TMPM4G9F15 one is checked, the BSP related file should be changed properly.

5. Operation Confirmation Condition

Used microcontroller	TMPM4G9F15FG
Used board	TMPM4G9F15FG Evaluation Board by Sensyst
Unified development environment	IAR Embedded Workbench for ARM 8.11.2.13606
Unified development environment	µVision MDK Version 5.24.2.0
Sample program	V1000

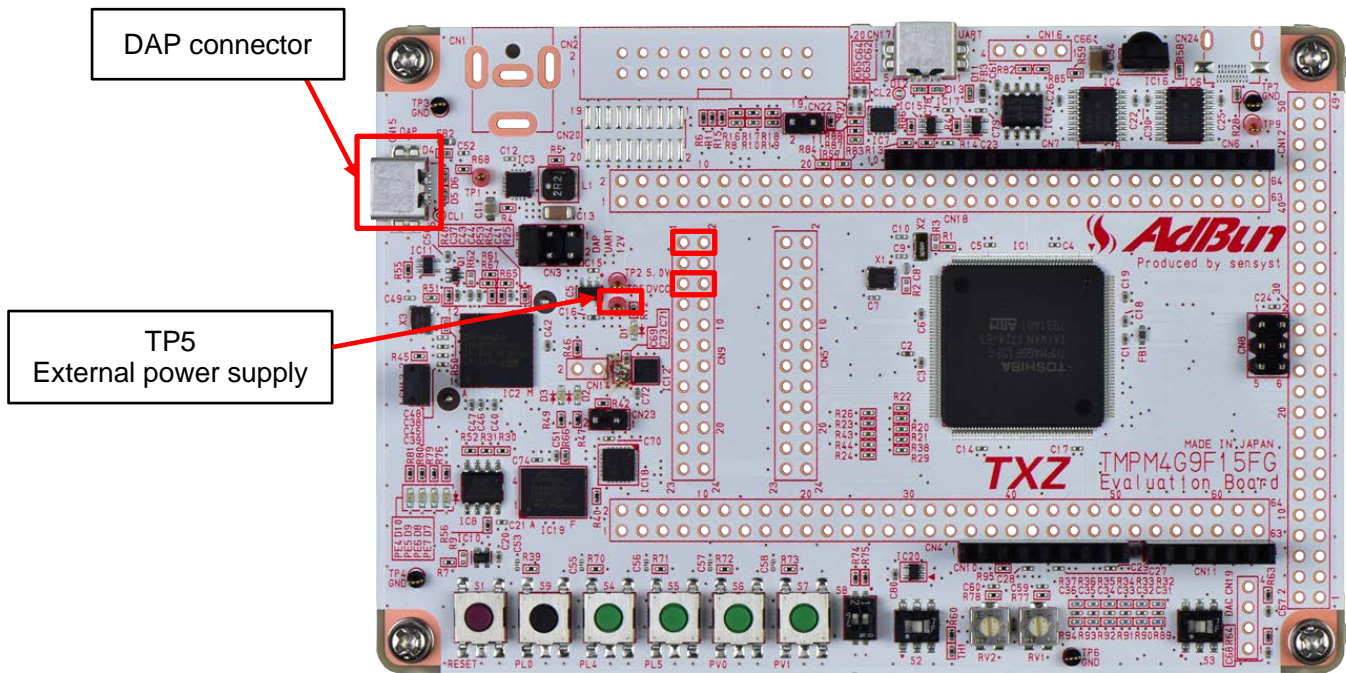
Evaluation board (TMPM4G9F15FG Evaluation Board) Top view



6. Evaluation Board Setting

The following pin connections should be done on the evaluation board.

CN9		
Board function	Through-hole No.	Through-hole No.
LED (D10)	1: LED0	2: PE4
LED (D8)	5: LED2	6: PE6



7. Operation of Evaluation Board

After the program is written to the evaluation board, the board should be disconnected with the PC for the power not to be supplied through the USB cable.

An external 3.3-V power is supplied on TP5.

The voltage of the external power supply should be changed to check the operation of the evaluation board.

The voltage of the external power supply is detected. When the voltage is more than the setting value, the LED (D10) lights and the LED (D8) lights out.

When the voltage is equal to or less than the setting value, the LED (D10) lights out and the LED (D8) blinks.

8. Outline of LVD function

The main functions of the voltage detection circuit (LVD) are shown in the following table.

Function category	Function	Description	Note
Supply voltage detection function	Reset output	Reset is generated at the set detection voltage or less.	Selectable from the reset and an interrupt.
	Interrupt request	An interrupt request is generated at the set detection voltage or less.	
	Monitor	The status can be monitored using a status register for the voltage detection.	-
	Detected voltage selection	The selection out of 7 kinds is possible.	Supported for NORMAL/IDLE/STOP1 modes and STOP2 mode

9. Sample Program

When an external power is supplied to the evaluation board, the sample program detects the voltage of the power using the voltage detection circuit.
The detection result can be checked by the LED lighting and blinking.

9.1. Initialization

The following initialization is done after power is supplied.
The initialization of each clock setting and the setting of the watchdog timer are done.

9.2. Sample Program Main Operation

The BSP (Board Support Package) is initialized.
The variables are initialized.
The driver is initialized.
The application initialization is done.

The timer should be started. And the setting of the LVD should be done.
The detection voltage has been set to 3.1 V in the sample program.
The status of the voltage detection of the LVD should be monitored to check whether the power supply voltage is more or less than the detection/release voltage.
If the monitored result is the same as the previous one, the LVD circuit stays in the same state.
When the state where the detected voltage is more than the LVD setting voltage is monitored 8 times continuously, the LED (D10) lights.
When the state where the detected voltage is equal to or less than the LVD setting voltage is monitored 8 times continuously, the LED (D8) blinks at 1-second interval which is counted by the timer.

9.3. Detection Voltage Setting

The detection voltage can be set with the value "TSB_LVD->LVL1" in the "int_LVD" function in "lvd.c".
The default value is "LVD_VOLTAGE_31". The detection voltage can be updated by changing the parameter.

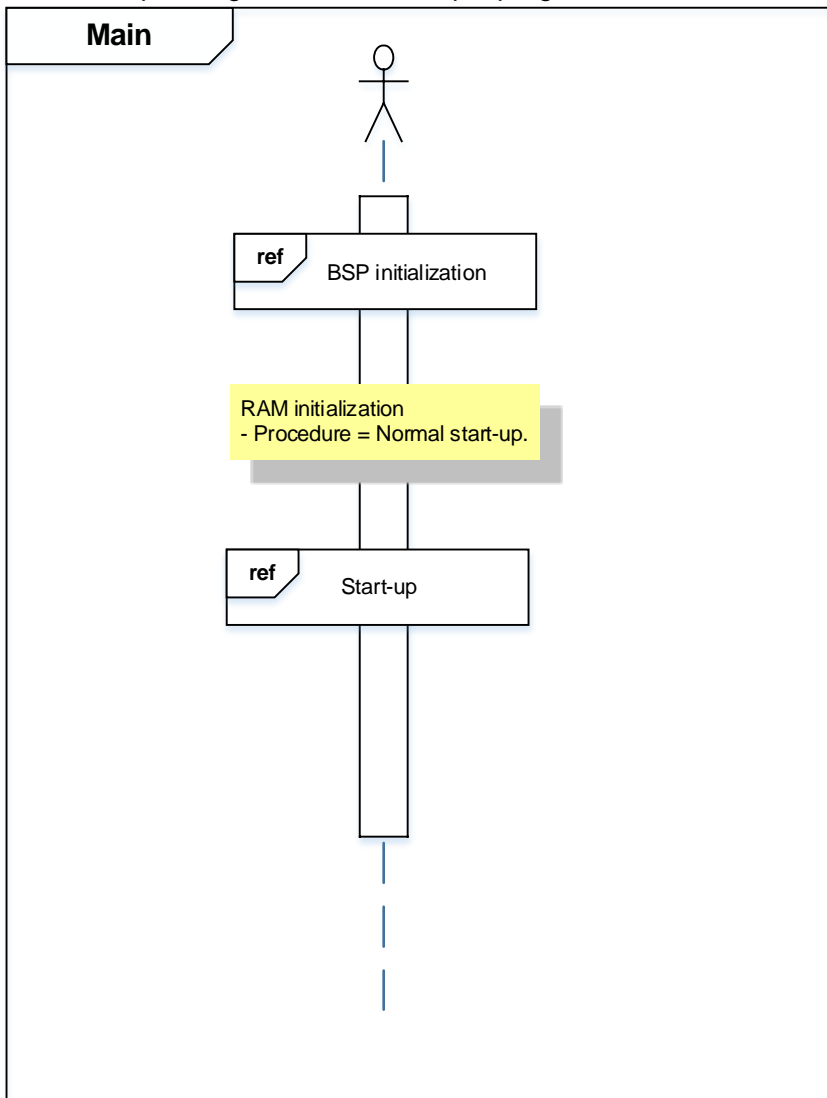
Example: `TSB_LVD->LVL1 = (uint8_t)LVD_VOLTAGE_29;`
The detection voltage is set to 2.9 V.

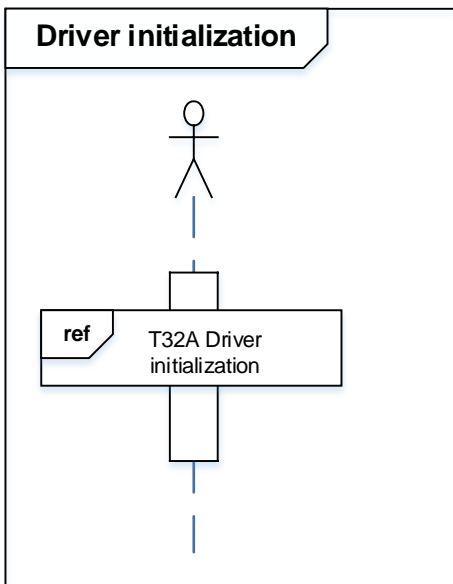
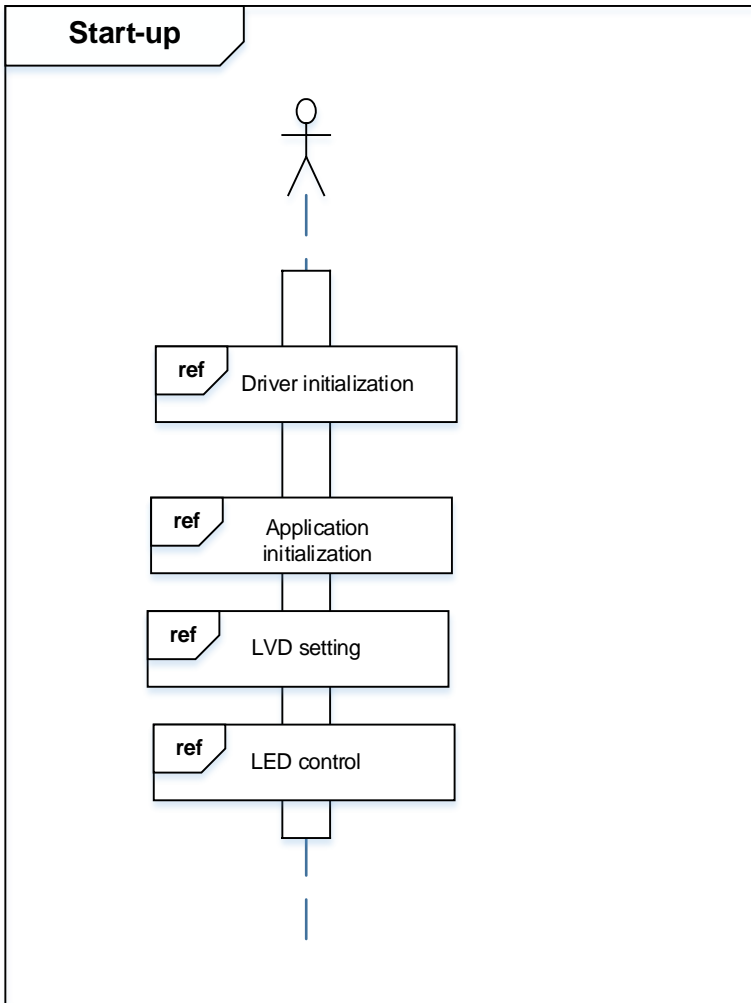
The detection voltages available are shown in the following table;

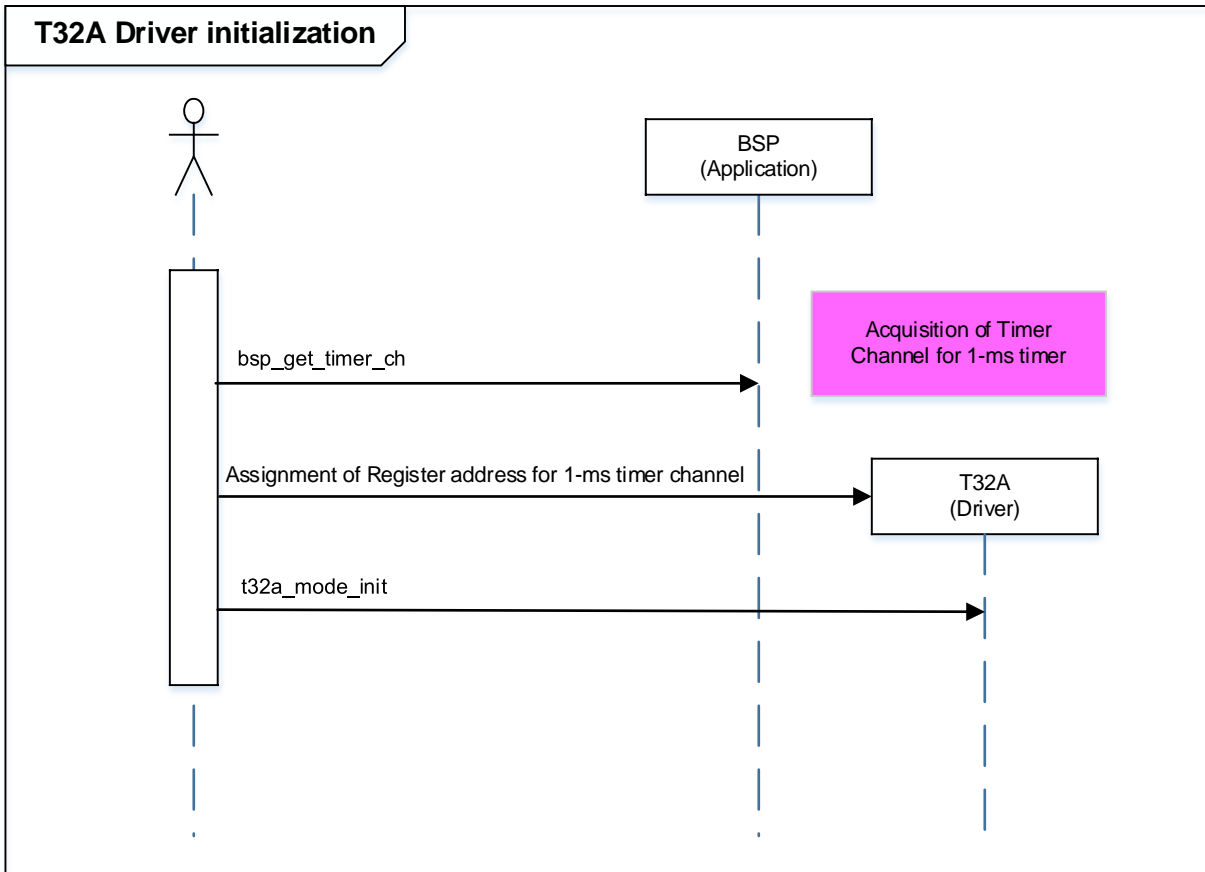
Setting parameter	Detection voltage
LVD_VOLTAGE_26	2.6 V
LVD_VOLTAGE_27	2.7 V
LVD_VOLTAGE_28	2.8 V
LVD_VOLTAGE_29	2.9 V
LVD_VOLTAGE_30	3.0 V
LVD_VOLTAGE_31	3.1 V

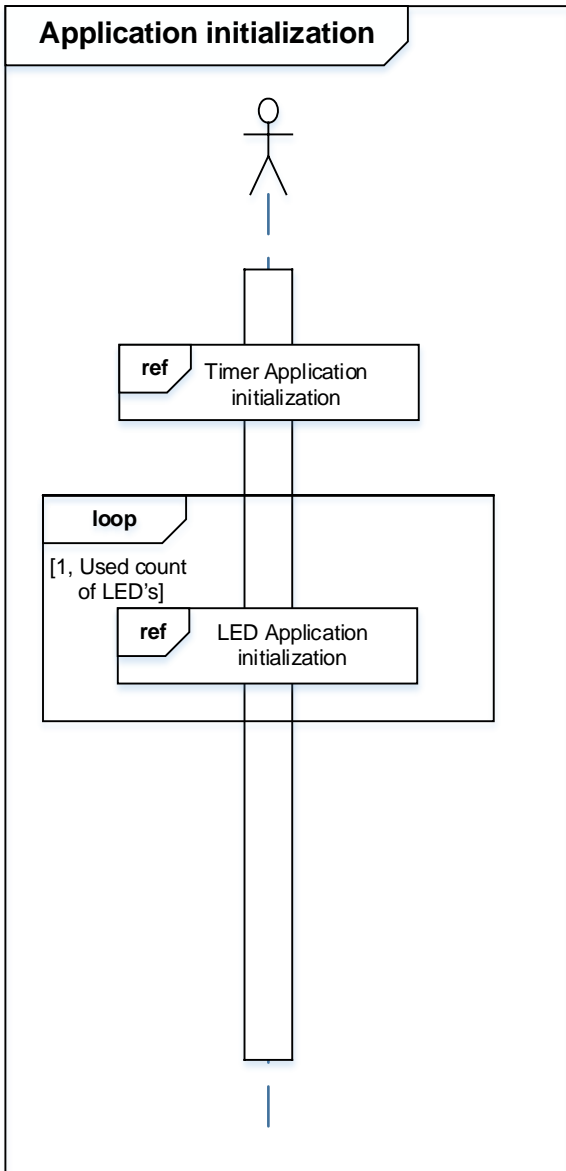
9.4. Operating Flow of Sample Program

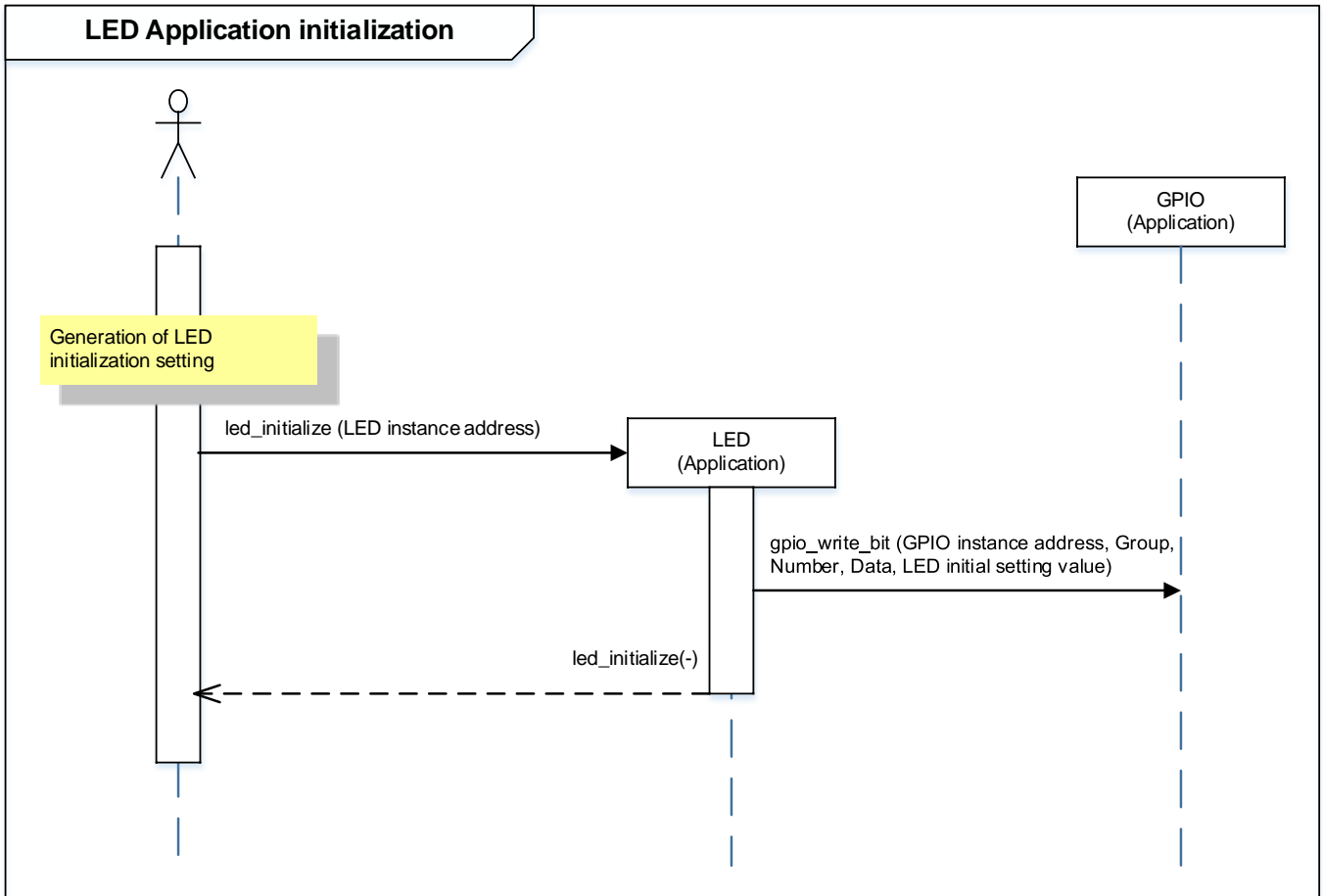
The basic operating flows of the sample program are shown in the following;

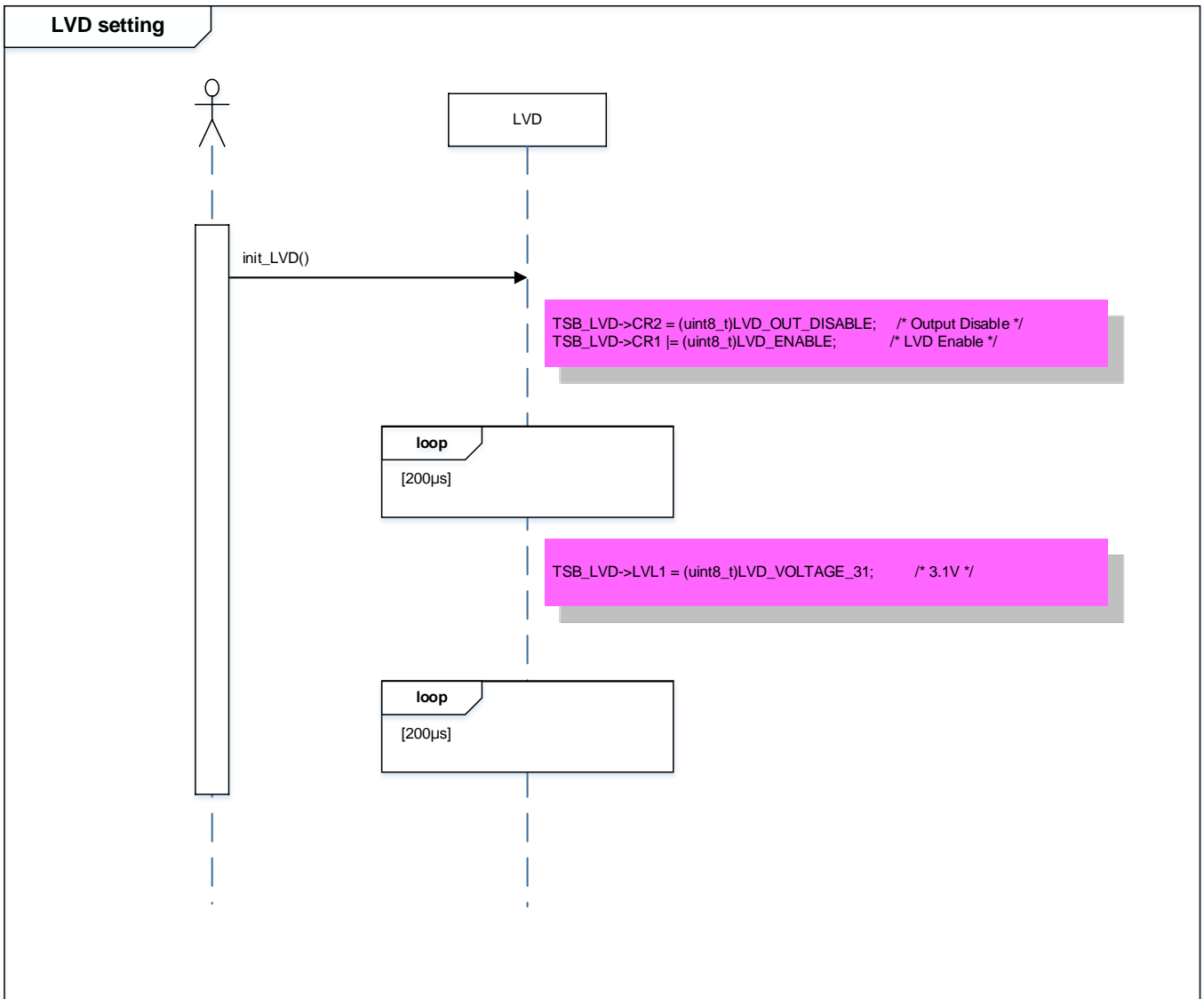


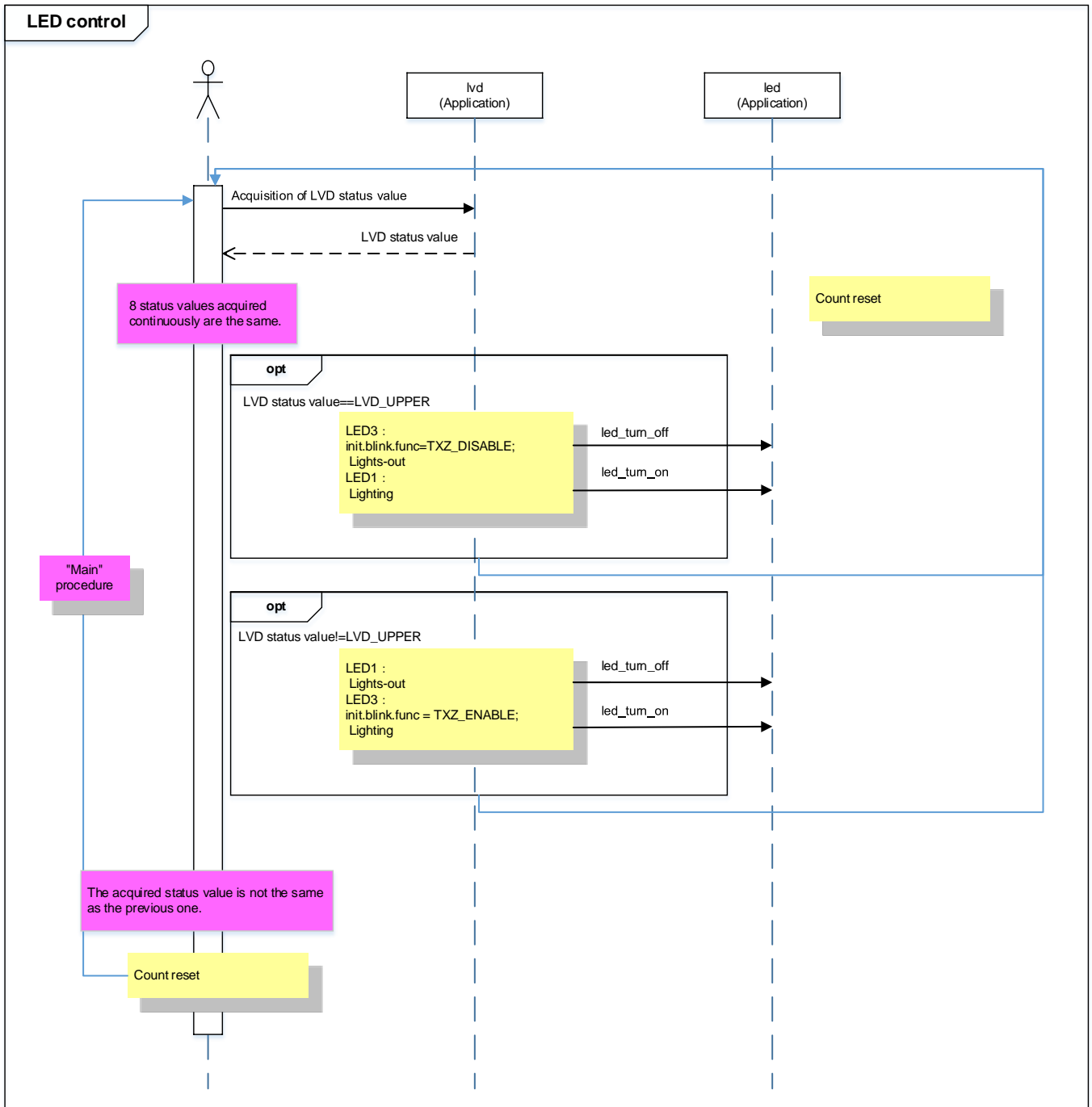












10. Precaution

When using the sample program with CPU other than TPM4G9F15, please check operation sufficiently.

11. Revision History

Rev	Date	Page	Description
1.0	2018-12-20	-	First release

RESTRICTIONS ON PRODUCT USE

Toshiba Corporation and its subsidiaries and affiliates are collectively referred to as "TOSHIBA". Hardware, software and systems described in this document are collectively referred to as "Product".

- TOSHIBA reserves the right to make changes to the information in this document and related Product without notice.
- This document and any information herein may not be reproduced without prior written permission from TOSHIBA. Even with TOSHIBA's written permission, reproduction is permissible only if reproduction is without alteration/omission.
- Though TOSHIBA works continually to improve Product's quality and reliability, Product can malfunction or fail. Customers are responsible for complying with safety standards and for providing adequate designs and safeguards for their hardware, software and systems which minimize risk and avoid situations in which a malfunction or failure of Product could cause loss of human life, bodily injury or damage to property, including data loss or corruption. Before customers use the Product, create designs including the Product, or incorporate the Product into their own applications, customers must also refer to and comply with (a) the latest versions of all relevant TOSHIBA information, including without limitation, this document, the specifications, the data sheets and application notes for Product and the precautions and conditions set forth in the "TOSHIBA Semiconductor Reliability Handbook" and (b) the instructions for the application with which the Product will be used with or for. Customers are solely responsible for all aspects of their own product design or applications, including but not limited to (a) determining the appropriateness of the use of this Product in such design or applications; (b) evaluating and determining the applicability of any information contained in this document, or in charts, diagrams, programs, algorithms, sample application circuits, or any other referenced documents; and (c) validating all operating parameters for such designs and applications. **TOSHIBA ASSUMES NO LIABILITY FOR CUSTOMERS' PRODUCT DESIGN OR APPLICATIONS.**
- **PRODUCT IS NEITHER INTENDED NOR WARRANTED FOR USE IN EQUIPMENTS OR SYSTEMS THAT REQUIRE EXTRAORDINARILY HIGH LEVELS OF QUALITY AND/OR RELIABILITY, AND/OR A MALFUNCTION OR FAILURE OF WHICH MAY CAUSE LOSS OF HUMAN LIFE, BODILY INJURY, SERIOUS PROPERTY DAMAGE AND/OR SERIOUS PUBLIC IMPACT ("UNINTENDED USE").** Except for specific applications as expressly stated in this document, Unintended Use includes, without limitation, equipment used in nuclear facilities, equipment used in the aerospace industry, lifesaving and/or life supporting medical equipment, equipment used for automobiles, trains, ships and other transportation, traffic signaling equipment, equipment used to control combustions or explosions, safety devices, elevators and escalators, and devices related to power plant. **IF YOU USE PRODUCT FOR UNINTENDED USE, TOSHIBA ASSUMES NO LIABILITY FOR PRODUCT.** For details, please contact your TOSHIBA sales representative or contact us via our website.
- Product shall not be used for or incorporated into any products or systems whose manufacture, use, or sale is prohibited under any applicable laws or regulations.
- The information contained herein is presented only as guidance for Product use. No responsibility is assumed by TOSHIBA for any infringement of patents or any other intellectual property rights of third parties that may result from the use of Product. No license to any intellectual property right is granted by this document, whether express or implied, by estoppel or otherwise.
- **ABSENT A WRITTEN SIGNED AGREEMENT, EXCEPT AS PROVIDED IN THE RELEVANT TERMS AND CONDITIONS OF SALE FOR PRODUCT, AND TO THE MAXIMUM EXTENT ALLOWABLE BY LAW, TOSHIBA (1) ASSUMES NO LIABILITY WHATSOEVER, INCLUDING WITHOUT LIMITATION, INDIRECT, CONSEQUENTIAL, SPECIAL, OR INCIDENTAL DAMAGES OR LOSS, INCLUDING WITHOUT LIMITATION, LOSS OF PROFITS, LOSS OF OPPORTUNITIES, BUSINESS INTERRUPTION AND LOSS OF DATA, AND (2) DISCLAIMS ANY AND ALL EXPRESS OR IMPLIED WARRANTIES AND CONDITIONS RELATED TO SALE, USE OF PRODUCT, OR INFORMATION, INCLUDING WARRANTIES OR CONDITIONS OF MERCHANTABILITY, FITNESS FOR A PARTICULAR PURPOSE, ACCURACY OF INFORMATION, OR NONINFRINGEMENT.**
- Do not use or otherwise make available Product or related software or technology for any military purposes, including without limitation, for the design, development, use, stockpiling or manufacturing of nuclear, chemical, or biological weapons or missile technology products (mass destruction weapons). Product and related software and technology may be controlled under the applicable export laws and regulations including, without limitation, the Japanese Foreign Exchange and Foreign Trade Law and the U.S. Export Administration Regulations. Export and re-export of Product or related software or technology are strictly prohibited except in compliance with all applicable export laws and regulations.
- Please contact your TOSHIBA sales representative for details as to environmental matters such as the RoHS compatibility of Product. Please use Product in compliance with all applicable laws and regulations that regulate the inclusion or use of controlled substances, including without limitation, the EU RoHS Directive. **TOSHIBA ASSUMES NO LIABILITY FOR DAMAGES OR LOSSES OCCURRING AS A RESULT OF NONCOMPLIANCE WITH APPLICABLE LAWS AND REGULATIONS.**