

M4G Group (1)
Application Note
Oscillation Frequency Detector
(OFD-A)

Outlines

This application note is a reference material for developing products using the Oscillation Frequency Detector (OFD) function of M4G Group (1). This document helps the user check operation of the product and develop its program.

Target sample program: OFD_LED_M4G9

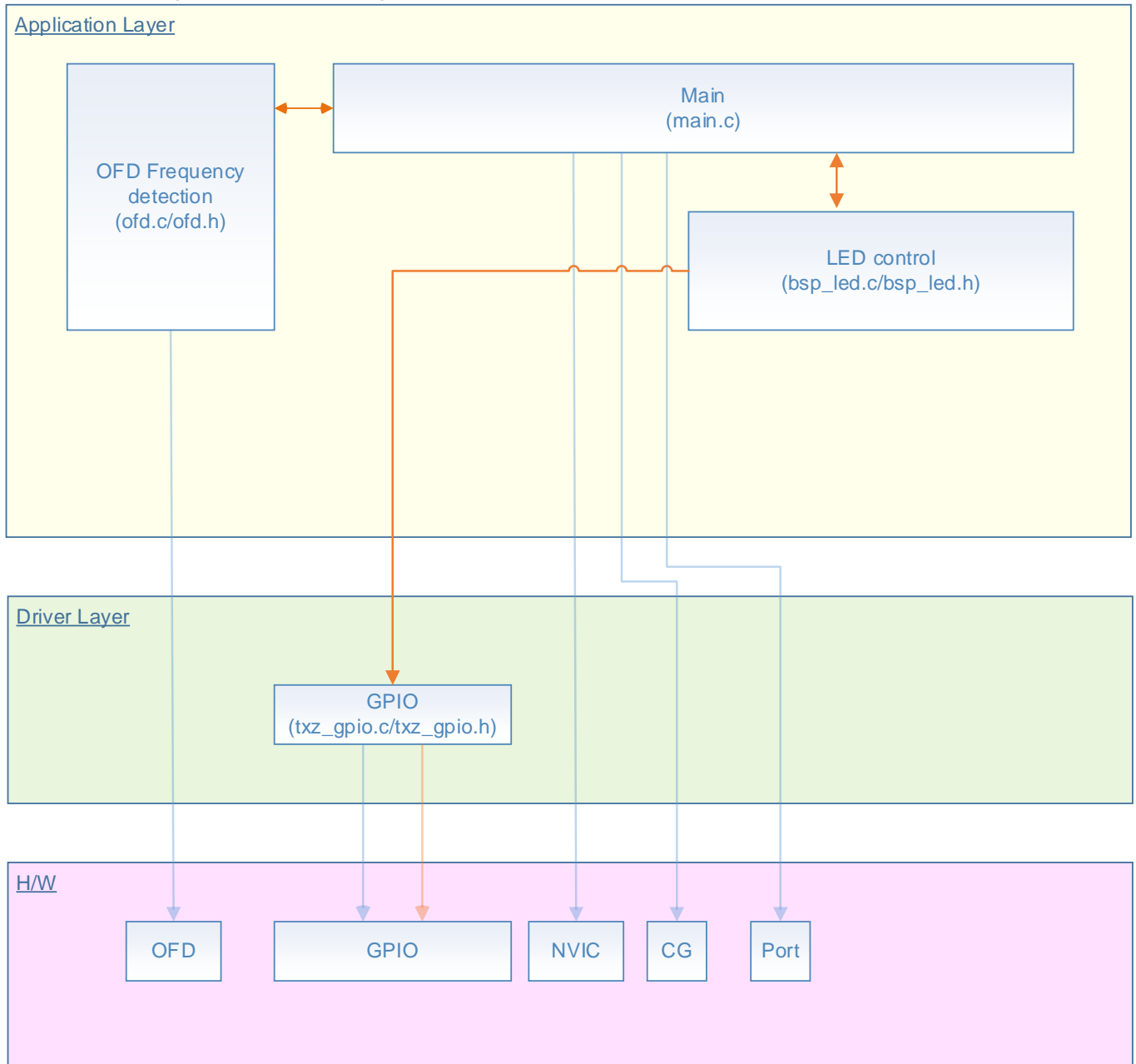
Table of Contents

| | |
|---|----|
| Outlines..... | 1 |
| Table of Contents..... | 2 |
| 1. Preface | 3 |
| 2. Reference Document | 4 |
| 3. Function to Use..... | 4 |
| 4. Target Device..... | 4 |
| 5. Operation Confirmation Condition | 5 |
| 6. Evaluation Board Setting..... | 6 |
| 7. Outline of OFD | 7 |
| 8. Sample Program | 8 |
| 8.1. Initialization | 8 |
| 8.2. Sample Program Main Operation | 8 |
| 8.3. OFD Setting Change | 8 |
| 8.4. Operating Flow of Sample Program | 9 |
| 9. Precaution..... | 16 |
| 10. Revision History | 16 |
| RESTRICTIONS ON PRODUCT USE | 17 |

1. Preface

This sample program is used to check the operation of OFD. The clock signal selected by OFD is monitored. Thereby it can be checked that the frequency range is normal.

Structure diagram of Sample program



2. Reference Document

- Datasheet
TMPM4G Group (1) datasheet Rev1.0 (Japanese edition)
- Reference manual
Oscillation Frequency Detector (OFD-A) Rev2.1 (Japanese edition)
Input/Output Ports (PORT-M4G(1)) Rev.1.0 (Japanese edition)
32-bit Timer Event Counter (T32A-B) Rev.2.1 (Japanese edition)
- Application note
M4G Group (1) Application Note Startup(CMSIS System &Clock Configuration) Rev1.0
- Other reference document
TMPM4G (1) Group Peripheral Driver User Manual (Doxygen)

3. Function to Use

| IP | Channel | Port | Function / Operation mode |
|--------------------------------|-------------|--|---|
| Oscillation Frequency Detector | - | - | Abnormal detection of the clock frequency |
| 32-bit Timer Event Counter | Timer A ch0 | - | Interval timer |
| Input/Output Ports | - | PE4 (Output Port) PE6 (Output Port) | Output |

4. Target Device

The target devices of this application note are as follows:

| | | | |
|---------------|---------------|--------------|--------------|
| TMPM4G9F15FG | TMPM4G9F10FG | TMPM4G9FEFG | TMPM4G9FDFG |
| TMPM4G9F15XBG | TMPM4G9F10XBG | TMPM4G9FEXBG | TMPM4G9FDXBG |
| TMPM4G8F15FG | TMPM4G8F10FG | TMPM4G8FEFG | TMPM4G8FDFG |
| TMPM4G8F15XBG | TMPM4G8F10XBG | TMPM4G8FEXBG | TMPM4G8FDXBG |
| | TMPM4G7F10FG | TMPM4G7FEFG | TMPM4G7FDFG |
| | TMPM4G6F10FG | TMPM4G6FEFG | TMPM4G6FDFG |

* This sample program operates on the evaluation board of TMPM4G9F15FG.

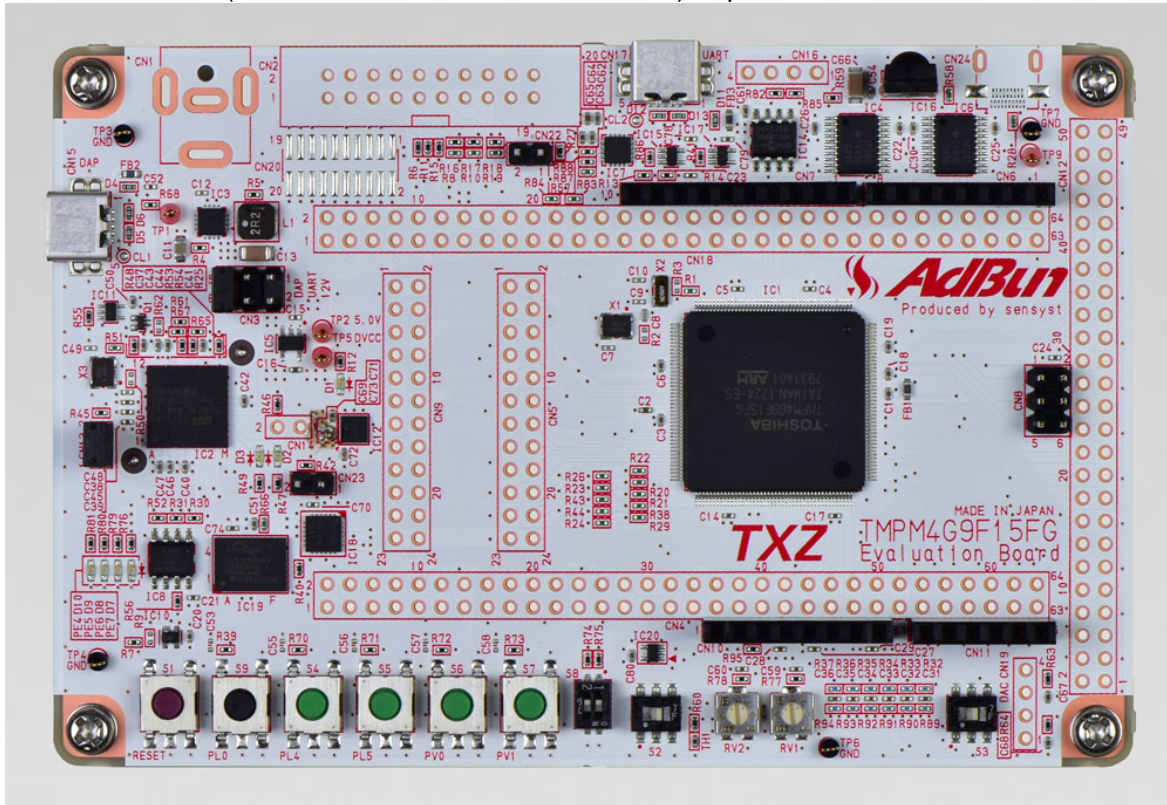
If other function than the TMPM4G9F15 one is checked, it is necessary that CMSIS Core related files (C startup file and I/O header file) should be changed properly.

The BSP related file is dedicated to the evaluation board (TMPM4G9F15). If other function than the TMPM4G9F15 one is checked, the BSP related file should be changed properly.

5. Operation Confirmation Condition

| | |
|---------------------------------|---|
| Used microcontroller | TMPM4G9F15FG |
| Used board | TMPM4G9F15FG Evaluation Board by Sensyst |
| Unified development environment | IAR Embedded Workbench for ARM 8.11.2.13606 |
| Unified development environment | µVision MDK Version 5.24.2.0 |
| Sample program | V1000 |

Evaluation board (TMPM4G9F15FG Evaluation Board) Top view

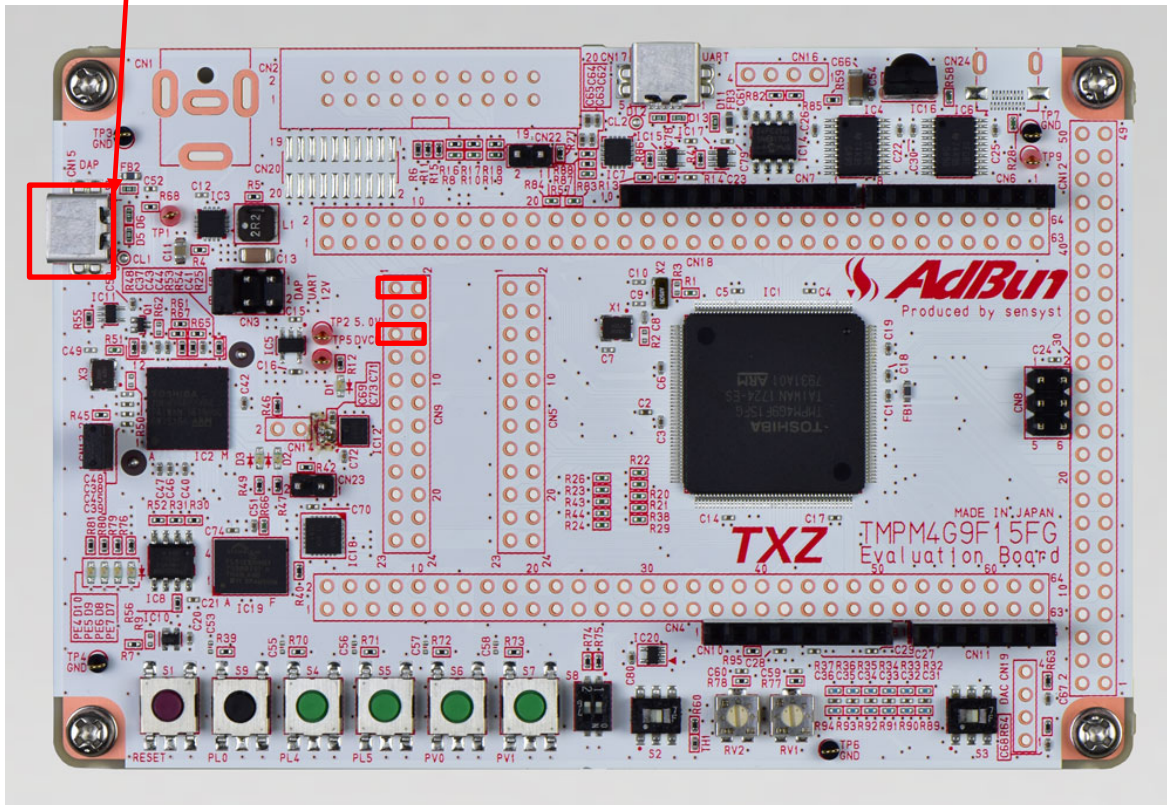


6. Evaluation Board Setting

The following pin connections should be done on the evaluation board.

| CN5 | | |
|----------------|------------------|------------------|
| Board function | Through-hole No. | Through-hole No. |
| LED (D10) | 1: LED0 | 2: PE4 |
| LED (D8) | 5: LED2 | 6: PE6 |

DAP connector



7. Outline of OFD

Oscillation Frequency Detector (OFD) detects abnormalities as the clock signal to monitor exceeding the range of the set-up frequency. The lists of functions are as follows.

| Function Classification | Function | Description |
|---|---------------------------|--|
| Abnormal detection of the clock frequency | Monitor clock | External high speed oscillator clock (f_{EHOSC}) or High speed clock (f_c) |
| | Standard clock (Note) | Internal high speed oscillator 2 clock (f_{IHOSC2}) |
| | Frequency detective range | The maximum, the minimum are settable. |
| | State monitor | status register. >operation / no operation >abnormality / no abnormality |
| | Reset output | Prohibition/permission of a reset output are possible. |
| Protection | Protect function | Incorrect writing is prevented. |

Note:When stopping the standard clock during OFD operation ($[OFDRST] < OFDRSTEN = 1$), OFD reset occurs.(When stopping the standard clock before OFD operation, OFD reset does not occur.)

8. Sample Program

In this sample program, the LED shows the detection result of External Oscillation Frequency.

In the normal frequency range, the LED (D10) blinks.
If it exceeds the normal frequency range, the LED (D8) blinks.

8.1. Initialization

The following initialization is done after power is supplied.
The initialization of each clock setting and the setting of the watchdog timer are done.

8.2. Sample Program Main Operation

Initialization of BSP (Board Support Package) is executed.
The OFD reset flag should be checked and cleared.
Internal oscillation should be set Enable.
The application is initialized.
The driver is initialized.

After each initialization is set, the OFD should be set.
In the normal frequency range, the LED (D10) blinks.
If it exceeds the normal frequency range, the LED (D8) blinks.
The blinking cycle is 1 second.
Using 1-ms timer counter, turning the LED ON / OFF repeats with two kinds of counter value, 0 to 999 times and 1000 to 1999 times.

8.3. OFD Setting Change

When the OFD frequency range of sample program is changed, the following should be changed.

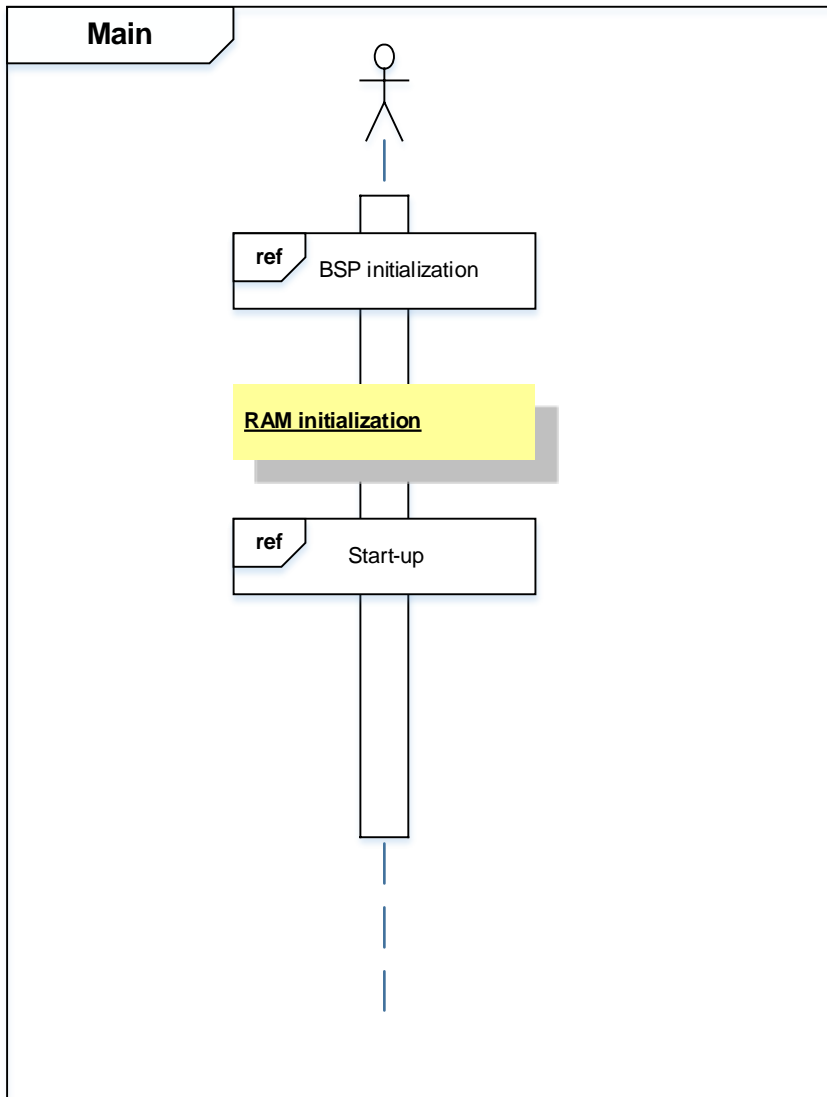
```
#define OFD_LOWER_COUNT_EXTERNAL ((uint32_t)0x01CU)  
#define OFD_HIGHER_COUNT_EXTERNAL ((uint32_t)0x024U)
```

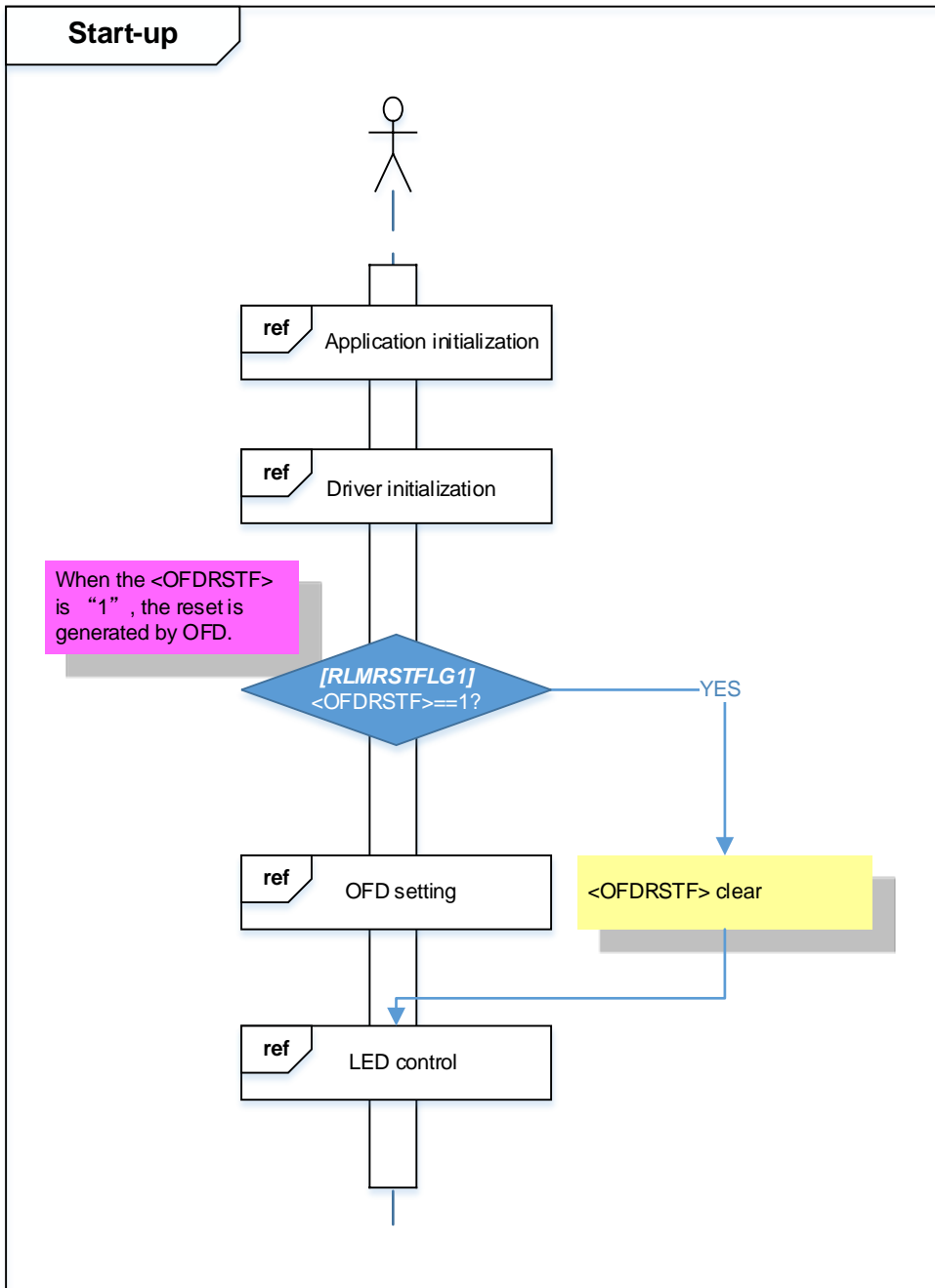
For the calculation of setting values, refer to the reference manual.

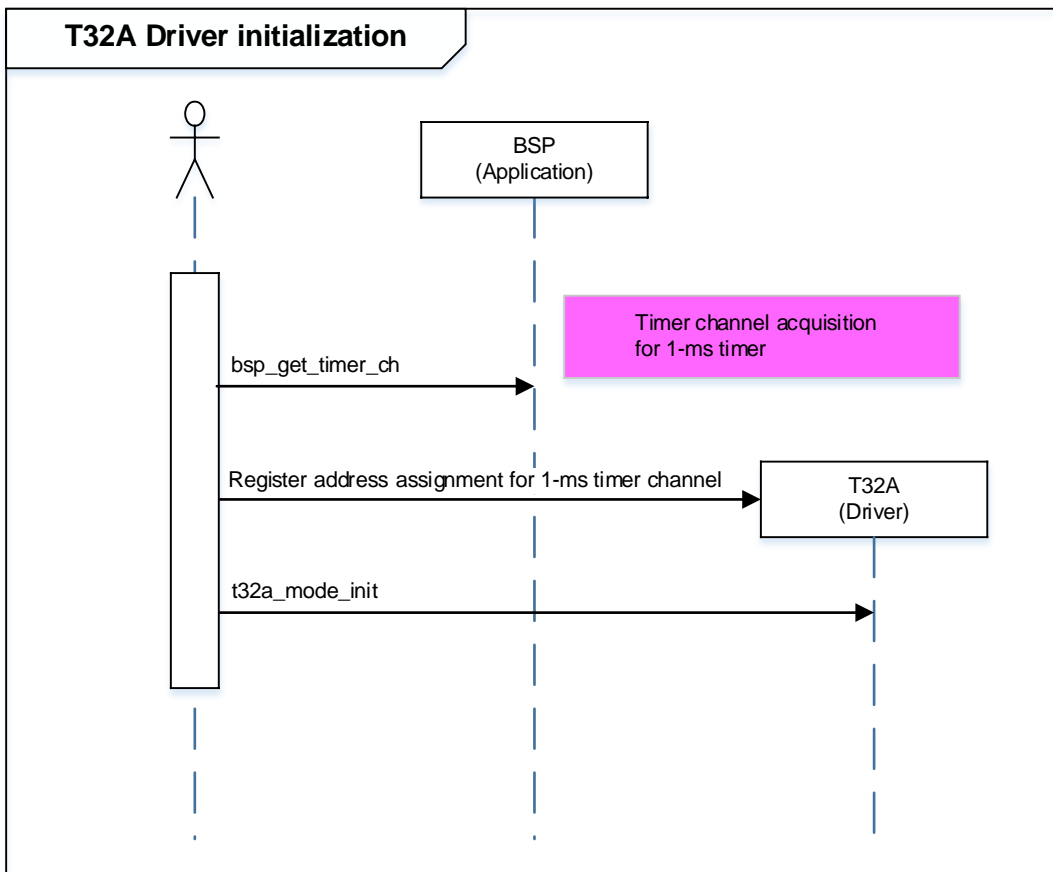
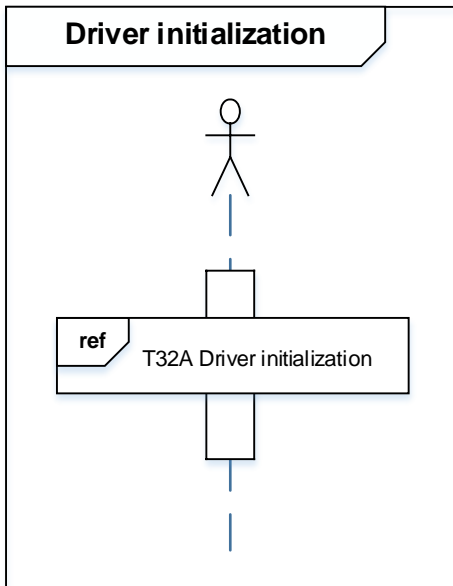
Calculating formula: Register setting value
= (Detective target clock frequency / 4) ÷ (Standard clock frequency / 128)
= (Detective target clock frequency ÷ Standard clock frequency) × 32

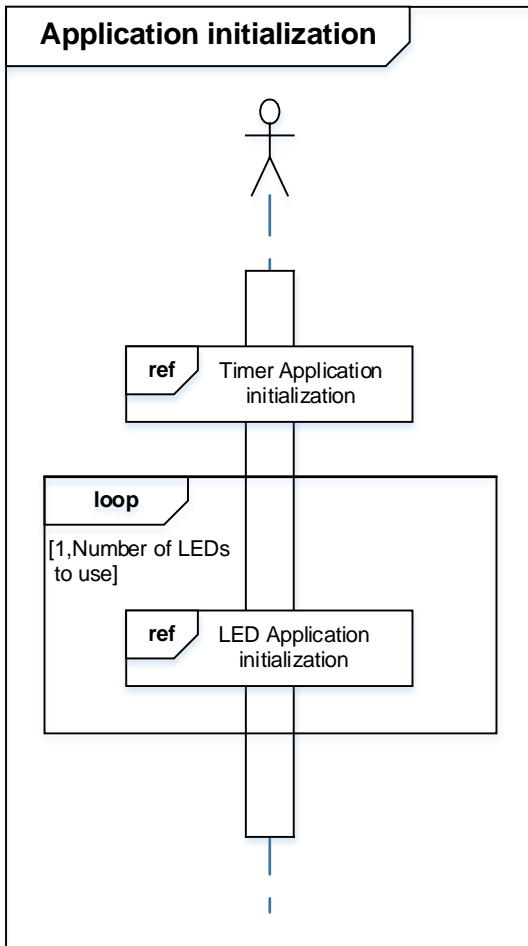
8.4. Operating Flow of Sample Program

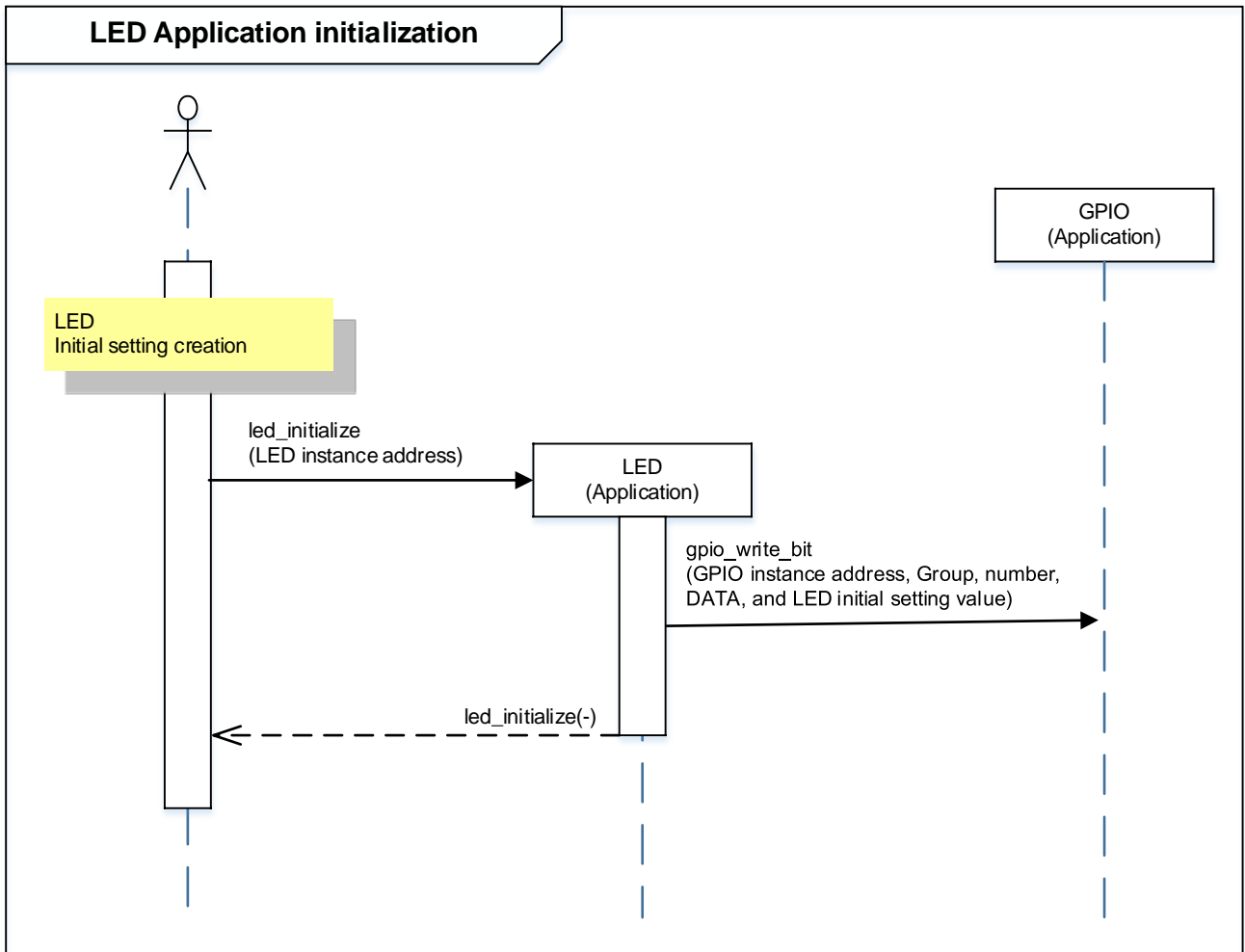
The basic operating flows of the sample program are shown in the following:

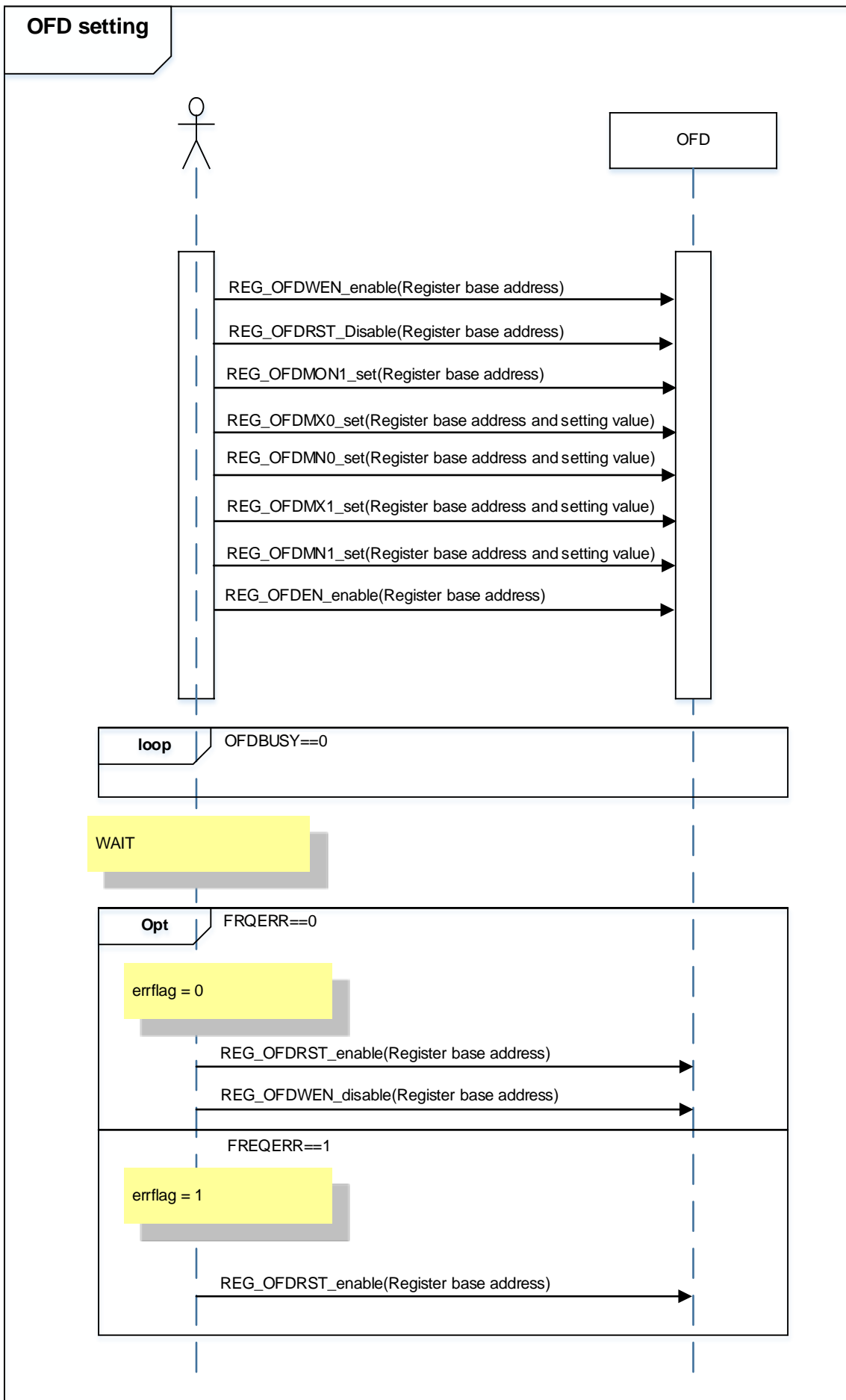


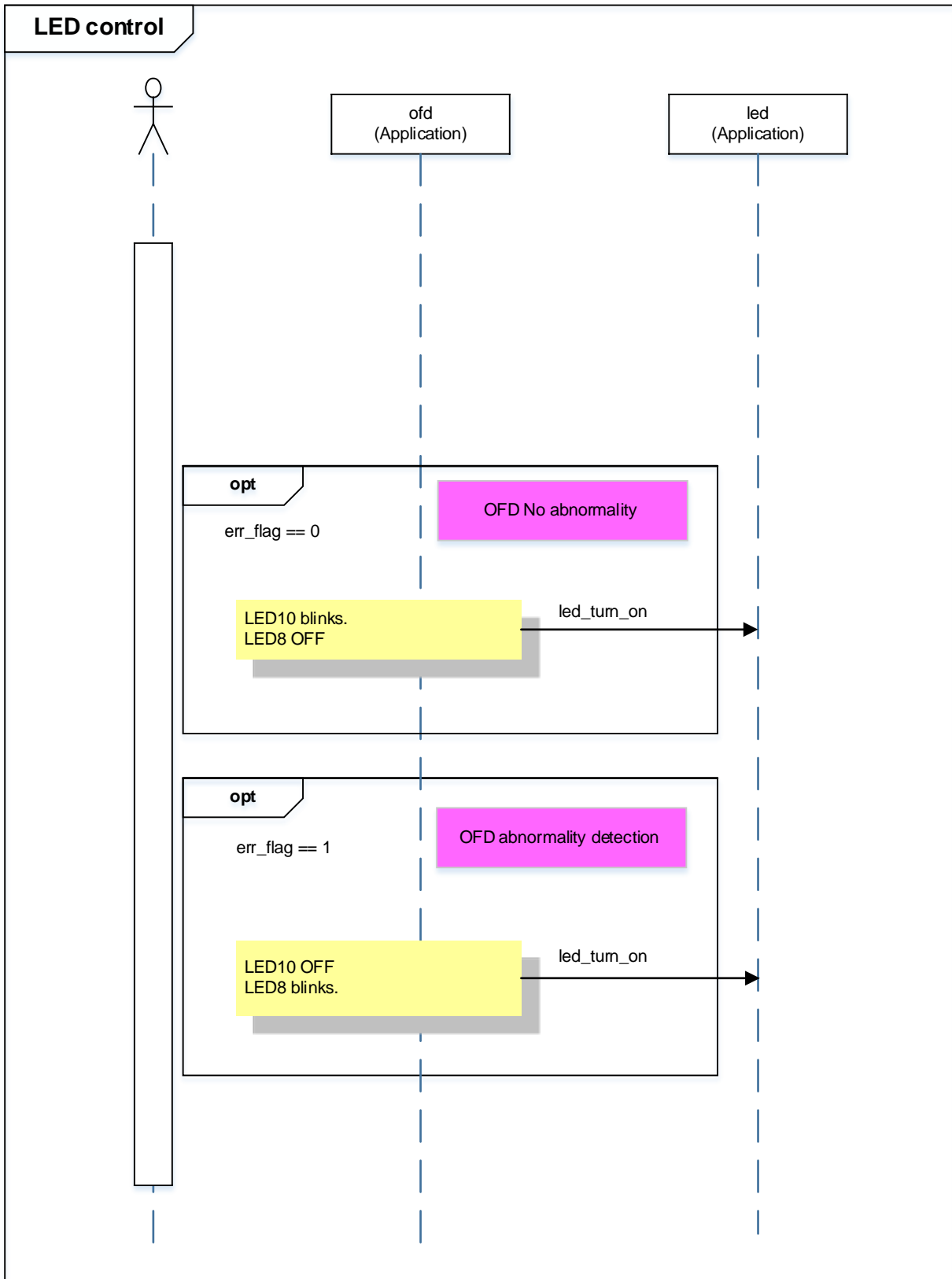












9. Precaution

When using the sample program with CPU other than TPM4G9, please check operation sufficiently.

10. Revision History

| Rev | Date | Page | Description |
|-----|------------|------|---------------|
| 1.0 | 2018-12-12 | - | First release |

RESTRICTIONS ON PRODUCT USE

Toshiba Corporation and its subsidiaries and affiliates are collectively referred to as "TOSHIBA". Hardware, software and systems described in this document are collectively referred to as "Product".

- TOSHIBA reserves the right to make changes to the information in this document and related Product without notice.
- This document and any information herein may not be reproduced without prior written permission from TOSHIBA. Even with TOSHIBA's written permission, reproduction is permissible only if reproduction is without alteration/omission.
- Though TOSHIBA works continually to improve Product's quality and reliability, Product can malfunction or fail. Customers are responsible for complying with safety standards and for providing adequate designs and safeguards for their hardware, software and systems which minimize risk and avoid situations in which a malfunction or failure of Product could cause loss of human life, bodily injury or damage to property, including data loss or corruption. Before customers use the Product, create designs including the Product, or incorporate the Product into their own applications, customers must also refer to and comply with (a) the latest versions of all relevant TOSHIBA information, including without limitation, this document, the specifications, the data sheets and application notes for Product and the precautions and conditions set forth in the "TOSHIBA Semiconductor Reliability Handbook" and (b) the instructions for the application with which the Product will be used with or for. Customers are solely responsible for all aspects of their own product design or applications, including but not limited to (a) determining the appropriateness of the use of this Product in such design or applications; (b) evaluating and determining the applicability of any information contained in this document, or in charts, diagrams, programs, algorithms, sample application circuits, or any other referenced documents; and (c) validating all operating parameters for such designs and applications. **TOSHIBA ASSUMES NO LIABILITY FOR CUSTOMERS' PRODUCT DESIGN OR APPLICATIONS.**
- **PRODUCT IS NEITHER INTENDED NOR WARRANTED FOR USE IN EQUIPMENTS OR SYSTEMS THAT REQUIRE EXTRAORDINARILY HIGH LEVELS OF QUALITY AND/OR RELIABILITY, AND/OR A MALFUNCTION OR FAILURE OF WHICH MAY CAUSE LOSS OF HUMAN LIFE, BODILY INJURY, SERIOUS PROPERTY DAMAGE AND/OR SERIOUS PUBLIC IMPACT ("UNINTENDED USE").** Except for specific applications as expressly stated in this document, Unintended Use includes, without limitation, equipment used in nuclear facilities, equipment used in the aerospace industry, lifesaving and/or life supporting medical equipment, equipment used for automobiles, trains, ships and other transportation, traffic signaling equipment, equipment used to control combustions or explosions, safety devices, elevators and escalators, and devices related to power plant. **IF YOU USE PRODUCT FOR UNINTENDED USE, TOSHIBA ASSUMES NO LIABILITY FOR PRODUCT.** For details, please contact your TOSHIBA sales representative or contact us via our website.
- Product shall not be used for or incorporated into any products or systems whose manufacture, use, or sale is prohibited under any applicable laws or regulations.
- The information contained herein is presented only as guidance for Product use. No responsibility is assumed by TOSHIBA for any infringement of patents or any other intellectual property rights of third parties that may result from the use of Product. No license to any intellectual property right is granted by this document, whether express or implied, by estoppel or otherwise.
- **ABSENT A WRITTEN SIGNED AGREEMENT, EXCEPT AS PROVIDED IN THE RELEVANT TERMS AND CONDITIONS OF SALE FOR PRODUCT, AND TO THE MAXIMUM EXTENT ALLOWABLE BY LAW, TOSHIBA (1) ASSUMES NO LIABILITY WHATSOEVER, INCLUDING WITHOUT LIMITATION, INDIRECT, CONSEQUENTIAL, SPECIAL, OR INCIDENTAL DAMAGES OR LOSS, INCLUDING WITHOUT LIMITATION, LOSS OF PROFITS, LOSS OF OPPORTUNITIES, BUSINESS INTERRUPTION AND LOSS OF DATA, AND (2) DISCLAIMS ANY AND ALL EXPRESS OR IMPLIED WARRANTIES AND CONDITIONS RELATED TO SALE, USE OF PRODUCT, OR INFORMATION, INCLUDING WARRANTIES OR CONDITIONS OF MERCHANTABILITY, FITNESS FOR A PARTICULAR PURPOSE, ACCURACY OF INFORMATION, OR NONINFRINGEMENT.**
- Do not use or otherwise make available Product or related software or technology for any military purposes, including without limitation, for the design, development, use, stockpiling or manufacturing of nuclear, chemical, or biological weapons or missile technology products (mass destruction weapons). Product and related software and technology may be controlled under the applicable export laws and regulations including, without limitation, the Japanese Foreign Exchange and Foreign Trade Law and the U.S. Export Administration Regulations. Export and re-export of Product or related software or technology are strictly prohibited except in compliance with all applicable export laws and regulations.
- Please contact your TOSHIBA sales representative for details as to environmental matters such as the RoHS compatibility of Product. Please use Product in compliance with all applicable laws and regulations that regulate the inclusion or use of controlled substances, including without limitation, the EU RoHS Directive. **TOSHIBA ASSUMES NO LIABILITY FOR DAMAGES OR LOSSES OCCURRING AS A RESULT OF NONCOMPLIANCE WITH APPLICABLE LAWS AND REGULATIONS.**