

M4K Group (1)
Application Note
Trimming Circuit
(TRM-A)

Outlines

This application note is a reference material for developing products using the Trimming circuit (TRM) function of M4K Group (1).

This document helps the user check operation of the product and develop its program.

Target sample program: TRMOSC

Table of Contents

| | |
|--|----|
| Outlines | 1 |
| Table of Contents | 2 |
| 1. Preface | 4 |
| 1.1. Reference Signal Input to T32AxINAx | 4 |
| 2. Reference Document | 5 |
| 3. Function to Use | 5 |
| 4. Target Device | 5 |
| 5. Operation Confirmation Condition | 6 |
| 6. Evaluation Board Operation | 6 |
| 7. Sample Program | 7 |
| 7.1. Structure Diagram of Sample Software | 7 |
| 7.2. Each Setting | 8 |
| 7.2.1. Clock | 8 |
| 7.2.2. Timer for Capture | 8 |
| 7.2.3. Timer for PPG | 8 |
| 7.3. Outlines of Operation | 10 |
| 7.3.1. Startup Routine | 10 |
| 7.3.2. Main Operation | 10 |
| 7.3.3. Trimming Initialization | 11 |
| 7.3.4. Trimming Process | 11 |
| 7.3.4.1. Pulse Width Measurement | 13 |
| 7.3.4.2. Frequency Difference Calculation | 13 |
| 7.3.4.3. Trimming Value Calculation | 13 |
| 7.3.4.4. Trimming Setting | 16 |
| 7.4. Change of Setting | 16 |
| 7.4.1. Reference Signal Frequency | 16 |
| 7.5. Output Example of Terminal Software | 17 |
| 7.5.1. Setting Example of Terminal Software | 17 |
| 8. Points to Remember on Handling of Sample Programs | 18 |
| 9. Revision History | 18 |
| RESTRICTIONS ON PRODUCT USE | 19 |

Arm and Keil are registered trademarks of Arm Limited (or its subsidiaries) in the US and/or elsewhere.

All other company names, product names, and service names mentioned herein may be trademarks of their respective companies.

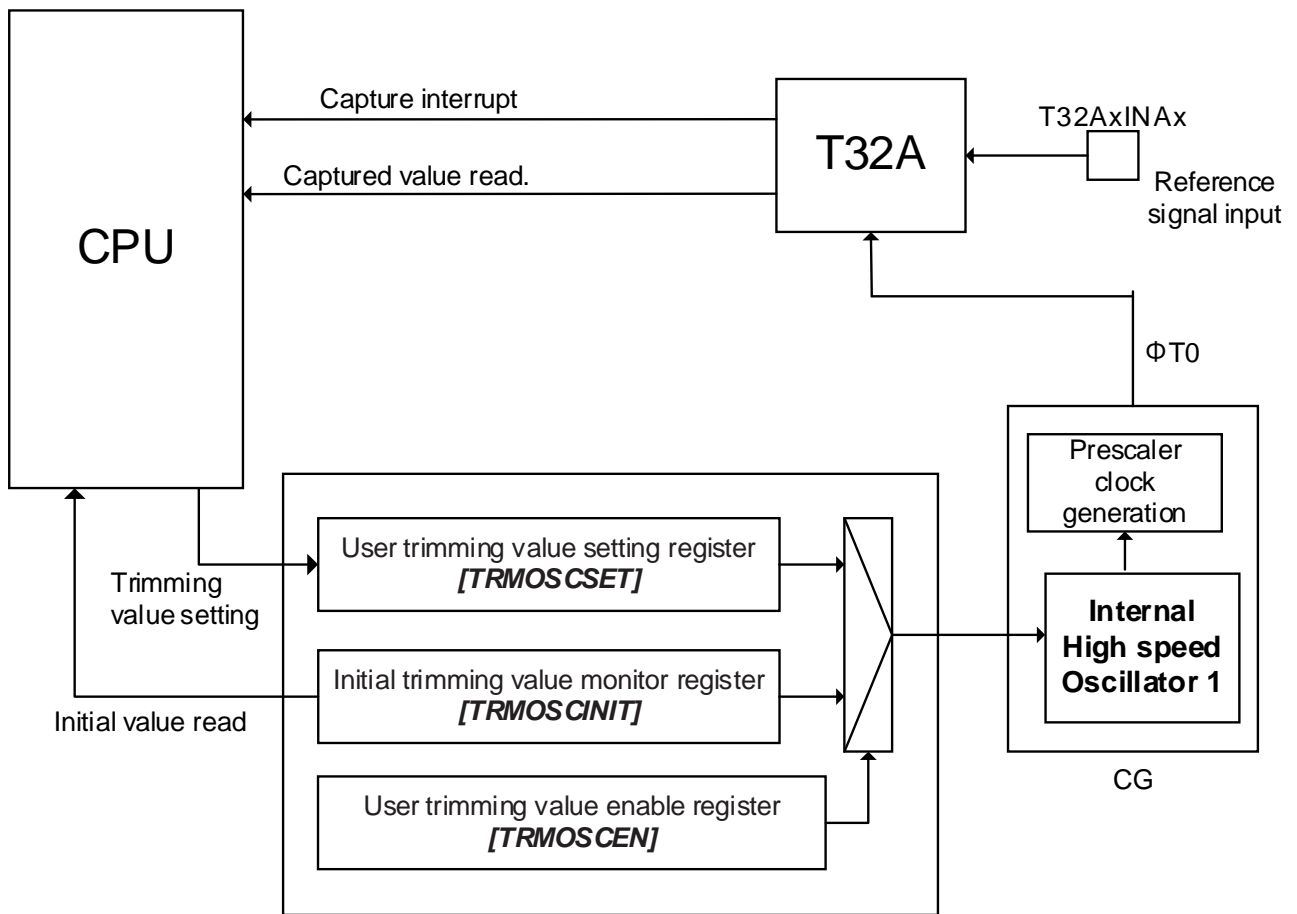
1. Preface

This sample program is used to adjust the internal oscillator using the Trimming circuit (TRM). The frequency of the internal oscillator is corrected using the pulse measurement function of the Timer. The correction of the frequency of the internal oscillator is done as follows; A reference signal is input to T32AxINAx.

When the terminal software is connected, the set trimming value can be displayed. A Programmable Rectangular Wave (PPG) is output. So the trimming value can be also checked by observing the wave form.

1.1. Reference Signal Input to T32AxINAx

A reference signal should be input to T32AxINAx. The difference between the target frequency and the captured frequency is calculated. Then the trimming value is determined and set.



Connection example when a reference signal is input to T32AxINAx

The frequencies of the following clocks should be set. For the setting values, refer to “Clock”.

- Target frequency (Frequency of internal high speed oscillator1): f_{IHOSC1}
- Frequency of the count clock for capture: f_{CAPCLK}
- Frequency of Reference signal : f_{BASE}

For an example of the correction of the frequency of the internal oscillator using the timer pulse measurement function, refer to “5.1.1. Input of Reference Clock to T32AxINAx Pin” in the Reference manual of “Trimming Circuit”.

2. Reference Document

1. Datasheet
TMPM4K Group (1) datasheet Rev2.0 (Japanese edition)
2. Reference manual
Trimming Circuit (TRM-A) Rev4.0 (Japanese edition)
Asynchronous Serial Communication Circuit (UART-C) Rev3.0 (Japanese edition)
32-bit Timer Event Counter (T32A-B) Rev3.0 (Japanese edition)
3. Application note
M4K Group (1) Application Note Startup (CMSIS System & Clock Configuration) Rev1.0
4. Other reference document
TMPM4KxA Group Peripheral Driver User Manual (Doxygen) V1.0.4.0

3. Function to Use

| IP | Channel | Port | Function/Operation mode |
|---|---------|-------------------------------|--|
| Trimming Circuit | - | - | Built-in oscillator frequency correction |
| Asynchronous Serial Communication Circuit | ch0 | PK0 (JT0RXD) PK1 (JT0TXDA) | UART mode |
| 32-bit Timer Event Counter | ch3 | PC0 (T32A03OUTA) | PPG output |
| | ch2 | PG1 (T32A02INA0) | External clock input |

4. Target Device

The target devices of this application note are as follows;

| | | | |
|---------------|---------------|---------------|---------------|
| TMPM4K4FYAUG | TMPM4K4FWAUG | TMPM4K4FUAUG | TMPM4K4FSAUG |
| TMPM4K4FYAFG | TMPM4K4FWAFG | TMPM4K4FUAFG | TMPM4K4FSAFG |
| TMPM4K2FYADUG | TMPM4K2FWADUG | TMPM4K2FUADUG | TMPM4K2FSADUG |
| TMPM4K1FYAUG | TMPM4K1FWAUG | TMPM4K1FUAUG | TMPM4K1FSAUG |
| | | | TMPM4K0FSADUG |

* This sample program operates on the evaluation board of TMPM4K4FYAUG.

If other function than the TMPM4K4 one is checked, it is necessary that CMSIS Core related files (the startup file and I/O header file) should be changed properly.

Additionally, the name of microcontroller which is set to the project should be changed.

The BSP related file is dedicated to the evaluation board (TMPM4K4FYAUG). If other function than the TMPM4K4 one is checked, the BSP related file should be changed properly.

5. Operation Confirmation Condition

| | |
|------------------------------------|---|
| Used microcontroller | TMPM4K4FYAUG |
| Used board | TMPM4K4 evaluation board (Product of ESP-kikaku Co. Ltd.) |
| Integrated development environment | IAR Embedded Workbench for ARM 8.22.2 |
| Integrated development environment | Arm® Keil® MDK Version 5.24.2.0 |
| Terminal software | Tera Term V4.96 |
| Sample program | v1.0.0 |

6. Evaluation Board Operation

| Board function | Microcontroller pin name |
|------------------------|--------------------------|
| PPG waveform output | PC0 |
| Reference signal input | PG1 |

1. A PC should be connected with the USB_UART connector to communicate with the terminal software.
2. A reference signal should be input to the PG1.
3. The terminal software should be started up, and the communication setting should be done.
4. The reset button on the evaluation board should be pushed down.

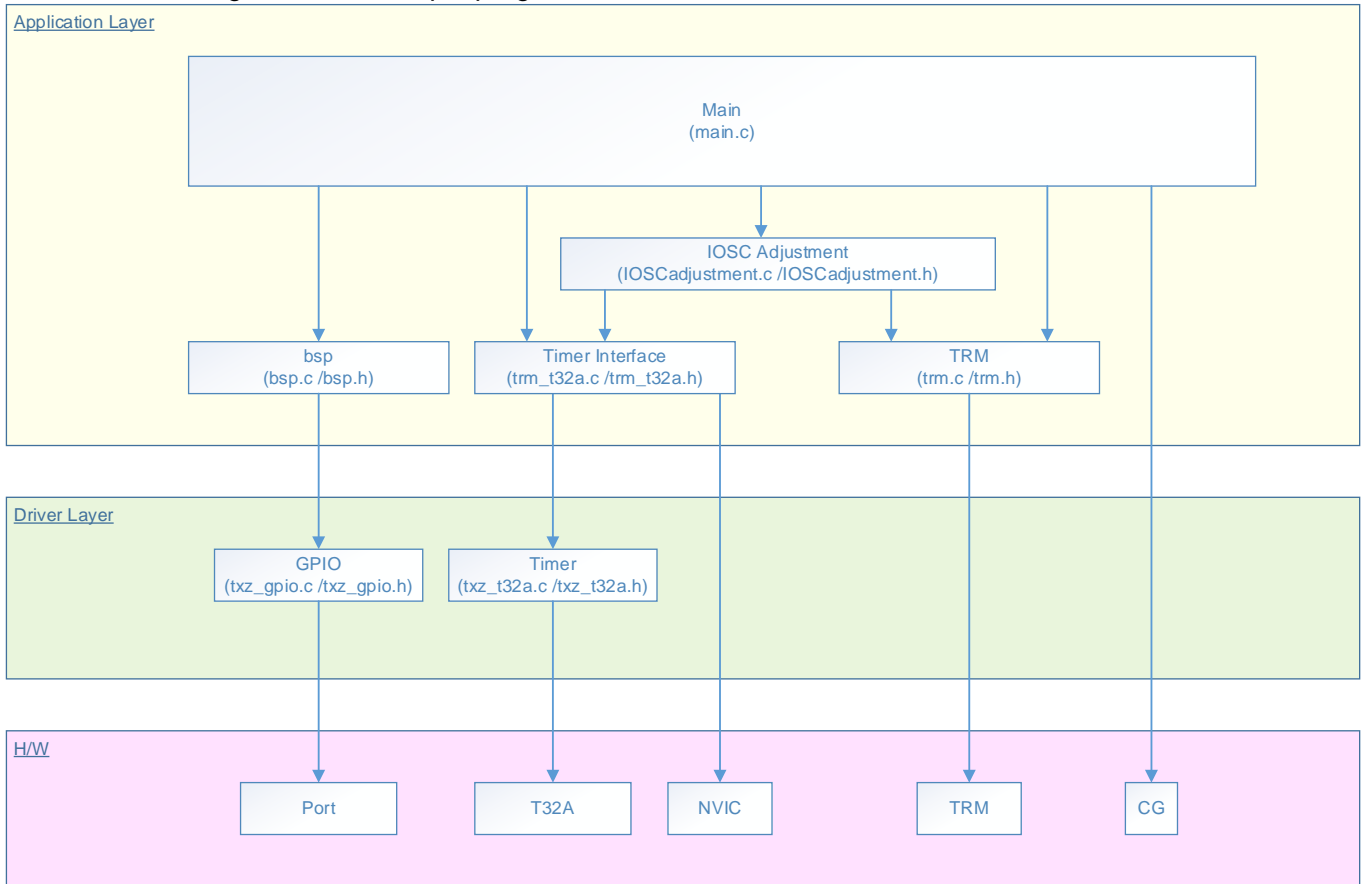
After the start-up, the following operations are enabled.

- The setting value of the trimming can be checked on the terminal software.
- The trimming value can be checked by a PPG waveform on the PC0.

7. Sample Program

7.1. Structure Diagram of Sample Software

The structure diagram of the sample program is shown below.



7.2. Each Setting

Each setting in the sample program is described in this section.

7.2.1. Clock

| | |
|--------------------------------|--------|
| f_{BASE} : | 240 Hz |
| f_{IHOSC1} : | 10 MHz |
| Prescaler value ($\Phi T0$): | 1/1 |
| f_{CAPCLK} : | 5 MHz |

7.2.2. Timer for Capture

- **[T32AxCRA]** (Counter control register A)

| Bit symbol | Function | Setting |
|-------------|-----------------------------------|---|
| PRSCLA[2:0] | Prescaler division rate selection | 001: 1/2 |
| CLKA[2:0] | Count clock selection | 000: Prescaler output |
| WBFA | Double buffer control | 0: Disable |
| UPDNA[1:0] | Counter operation | 00: Up-count |
| RELDA[2:0] | Counter reload condition | 000: No reload (Free-run) |
| STOPA[2:0] | Counter stop condition | 010: External trigger (T32AxINA0) rise edge |
| STARTA[2:0] | Counter start condition | 011: External trigger (T32AxINA0) fall edge |

- **[T32AxCAPCRA]** (Capture control register A)

| Bit symbol | Function | Setting |
|-------------|-----------------------------|---|
| CAPMA1[2:0] | [T32AxCAPA1] capture timing | 010: External trigger (T32AxINA0) rise edge |
| CAPMA0[2:0] | [T32AxCAPA0] capture timing | 011: External trigger (T32AxINA0) fall edge |

7.2.3. Timer for PPG

- **[T32AxCRA]** (Counter control register A)

| Bit symbol | Function | Setting |
|-------------|-----------------------------------|---------------------------------------|
| PRSCLA[2:0] | Prescaler division rate selection | 000: 1/1 |
| CLKA[2:0] | Count clock selection | 000: Prescaler output |
| WBFA | Double buffer control | 0: Disable |
| UPDNA[1:0] | Counter operation | 00: Up-count |
| RELDA[2:0] | Counter reload condition | 111: Match with the Timer register A1 |
| STOPA[2:0] | Counter stop condition | 000: A trigger is not used. |
| STARTA[2:0] | Counter start condition | 000: A trigger is not used. |

- **[T32AxOUTCRA0]** (Output control register A0)

| Bit symbol | Function | Setting |
|------------|-------------------|---------------|
| OCRA[1:0] | T32AxOUTA control | 00: No change |

- **[T32AxOUTCRA1]** (Output control register A1)

| Bit symbol | Function | Setting |
|---------------|--|--------------|
| OCRCAPA1[1:0] | T32AxOUTA control by the Capture register A1 | 00: Invalid. |
| OCRCAPA0[1:0] | T32AxOUTA control by the Capture register A0 | 00: Invalid. |
| OCRCMPA1[1:0] | T32AxOUTA control by the Comparator A1 | 11: Reversal |
| OCRCMPA0[1:0] | T32AxOUTA control by the Comparator A0 | 11: Reversal |

- **[T32AxRGA0]** (Timer register A0)

| Bit symbol | Function | Setting |
|------------|---|---------|
| RGA0[15:0] | A value is set to compare with the counter value. | 0 |

- **[T32AxRGA1]** (Timer register A1)

| Bit symbol | Function | Setting |
|------------|---|---------|
| RGA1[15:0] | A value is set to compare with the counter value. | 1 |

- **[T32AxRELDA]** (Counter reload register A)

| Bit symbol | Function | Setting |
|-------------|---------------------------------------|---------|
| RELDA[15:0] | A value is set to reload the counter. | 0 |

7.3. Outlines of Operation

The outlines of the operation of the sample program are described in this section.

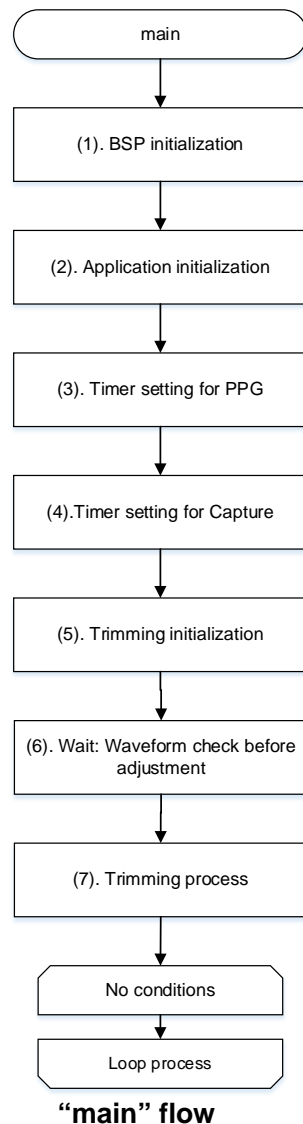
7.3.1. Startup Routine

The following initialization is done after power is supplied.

- Clock setting for the system core
- Setting of disable of the watchdog timer

7.3.2. Main Operation

After the initialization completes, the “main” function is executed. The following flow is done.



- (1)** BSP initialization
Clocks are supplied to peripheral functions and the ports are initialized.
- (2)** Application initialization
The following operation is done as the initialization of the application module.
 - UART input and output control module (for communication with the terminal software)
- (3)** Timer setting for PPG
The setting of the Timer for the PPG is done.
For the setting value, refer to “Timer for PPG”
- (4)** Timer setting for Capture
The setting of the Timer for capture is done.

- For the setting value, refer to “Timer for Capture”.
- (5) Trimming initialization
Refer to “Trimming Initialization”.
- (6) Wait: Waveform check before adjustment
A wait of any interval is prepared to check the PPG waveform before trimming.
- (7) Trimming process
Refer to “Trimming Process”.

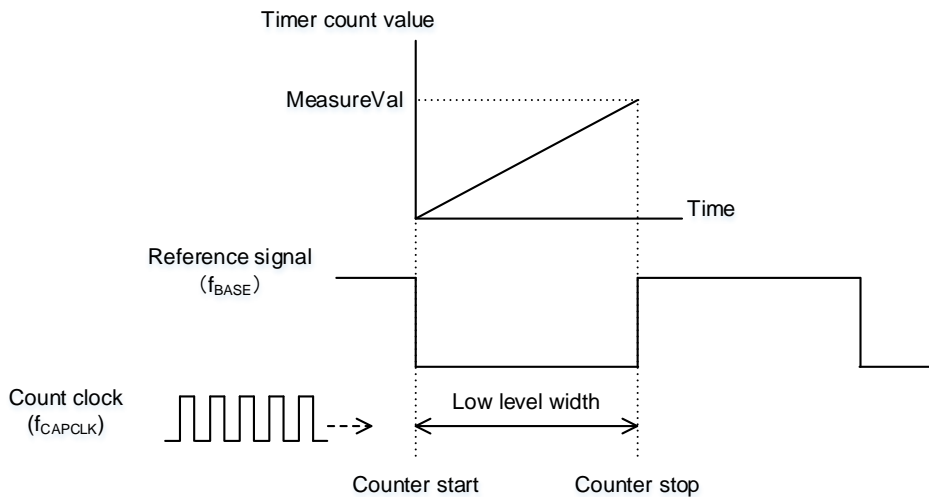
7.3.3. Trimming Initialization

The TRM register is normally initialized only by Power ON Reset. In this sample program, however, the TRM register is initialized by the software because the trimming has not been adjusted yet at the startup.

7.3.4. Trimming Process

The Low level width is measured by the pulse width measurement. The measured width is compared with the target width of Low level. Then the frequency difference is calculated. The trimming value is determined by the frequency difference.

- Measured Low level width (MeasureVal)



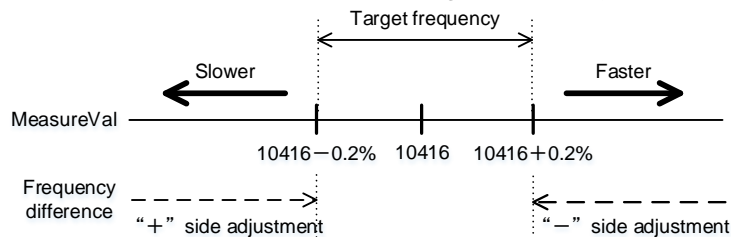
Pulse width measurement

For the measurement of the pulse width using the capture function, refer to “5.8. Pulse Width Measurement Using Capture Function” in the Reference manual of “32-bit Timer Event Counter”.

- Target Low level width

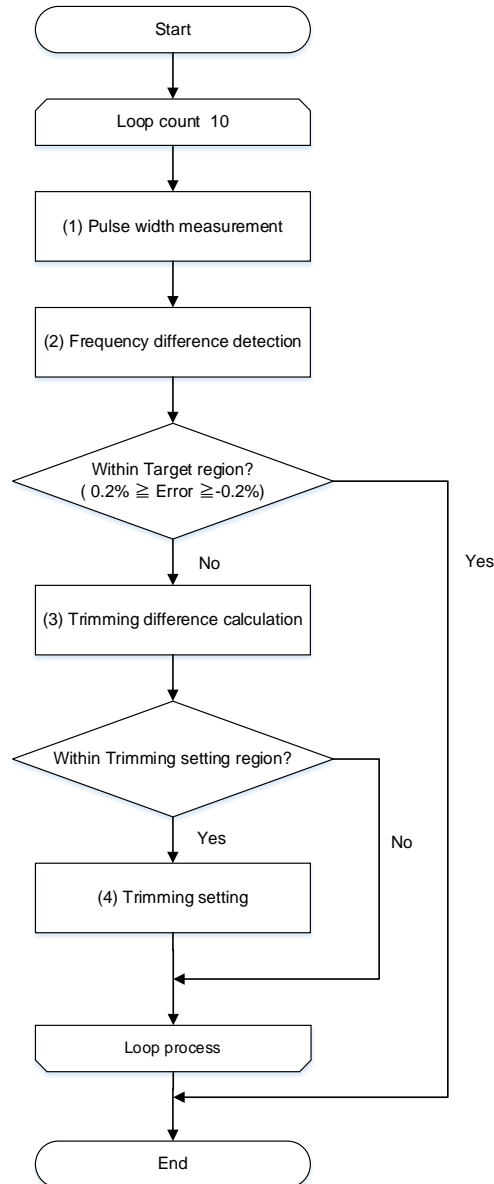
| f _{CAPCLK} | Timer count value of Low width (Target value) |
|---------------------|---|
| 5 MHz | 10416 |

The timer count of the target frequency should be in the target region of the MeasureVal (10416 ± 0.2%). The trimming process should be done to realize the target frequency.



Target region of MeasureVal

The following flow shows the trimming process.



Trimming process flow

- (1) Pulse width measurement
The Low level width of the reference signal is measured.
Refer to “Pulse Width Measurement”.
- (2) Frequency difference calculation
The frequency difference is calculated using the pulse width measured in Step (1).
Refer to “Frequency Difference CalculationPulse Width Measurement”.
- (3) Trimming value calculation
The trimming value is calculated using the frequency difference acquired in Step (2).
Refer to “Trimming Value Calculation”.
- (4) Trimming setting
The trimming value acquired in Step (3) is set to the user trimming value.
Refer to “Trimming Setting”.

The trimming repeats predetermined times (the initial value is 10). Then the process completes.

7.3.4.1. Pulse Width Measurement

- Measured value of Low level width
 $\text{MeasureVal} = [T32AxCAPA1] < CAPA1[15:0] >$

The following function executes the process in the source code.

File: IOSAdjustment.c
 Function name: MeasureWave

7.3.4.2. Frequency Difference Calculation

The frequency difference is calculated using the measured value of the Low level width and the target value of the Low level width.

The target value of the Low level width has been calculated and defined as a constant value.

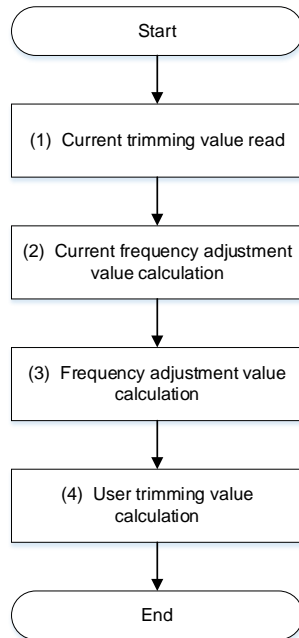
- Target value of Low level width
 $\#define \text{CAPTUREVAL10MHZ} \quad (10416) \quad /* \text{Reference signal frequency 240 (Hz) } */$
- Frequency difference (%)
 The difference value is calculated for adjustment.
 $\text{MeasureDiff} = (1 - (\text{MeasureVal} \div \text{CAPTUREVAL10MHZ})) \times 100$

The following function executes the process in the source code.

File: IOSAdjustment.c
 Function name: CalcDiff

7.3.4.3. Trimming Value Calculation

The trimming value is calculated by the following flow.

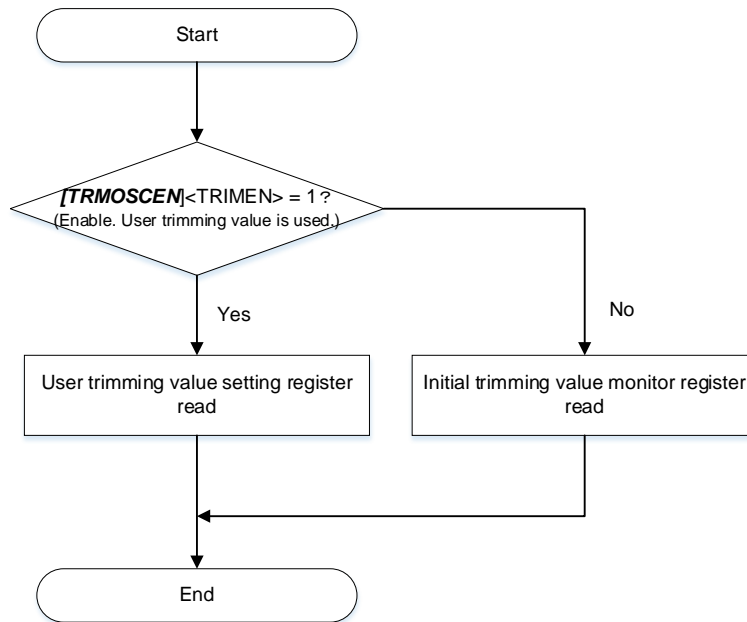


Trimming value calculation flow

(1) Current trimming value read

The current trimming value is read.

The read target register is selected by the value in the User trimming value enable control (**[TRMOSCEN]<TRIMEN>**).



Current trimming value read flow

The trimming values can be read from the following registers.

- User trimming value setting register read
 - Coarse trimming value:
trimvalueC = **[TRMOSCSET]<TRIMSETC[5:0]>**
 - Fine trimming value:
trimvalueF = **[TRMOSCSET]<TRIMSETF[3:0]>**
- Initial trimming value setting register read
 - Coarse trimming value:
trimvalueC = **[TRMOSCINIT]<TRIMINITC[5:0]>**
 - Fine trimming value:
trimvalueF = **[TRMOSCINIT]<TRIMINITF[3:0]>**

The following function executes the process in the source code.

File: IOSAdjustment.c
Function name: GetAdjustmentValue

(2) Current Frequency Adjustment Value Calculation

The current frequency adjustment value is calculated using the read trimming value.

Each frequency adjustment value is calculated by multiplying the trimming value by an adjustment step value.

- Adjustment step

The following values in “1. Outlines” in the Reference manual should be used.

Coarse trimming mean step: 0.8%

Fine trimming step: 0.1%

- Coarse frequency adjustment value (%)
adjvalueC

- Fine frequency adjustment value (%)
adjvalueF

- Current frequency adjustment value (%)
adjvalue = adjvalueC + adjvalueF

The following function executes the process in the source code.

File: IOScadjustment.c

Function name: GetAdjustmentValue

(3) Frequency adjustment value calculation

The frequency adjustment value is calculated.

- Frequency adjustment value (%)
difference = MeasureDiff + adjvalue

The following function executes the process in the source code.

File: IOScadjustment.c

Function name: CalcAdjVal

(4) User trimming value calculation

The user trimming value is calculated using the frequency adjustment value.

The user trimming value is calculated by dividing each frequency adjustment value by an adjustment step value.

- Adjustment step

The following values in “1. Outlines” in the Reference manual should be used.

Coarse trimming mean step: 0.8%

Fine trimming step: 0.1%

- Coarse trimming value (Absolute value)

This value is a quotient of the frequency adjustment value divided by the coarse trimming mean step value.

coarse = (|difference| / 0.8)

- Fine trimming value (Absolute value)

This value is a quotient of the frequency adjustment value divided by the fine trimming step value.

fine = ((|difference| - (coarse × 0.8)) / 0.1)

The user trimming values are as follows;

In the case of (difference ≥ 0):

- Coarse trimming value

CoarseTrim = coarse

- Fine trimming value

FineTrim = fine

In the case of (difference < 0):

- Coarse trimming value

- CoarseTrim = -coarse
- Fine trimming value
FineTrim = -fine

The following function executes the process in the source code.

File: IOSAdjustment.c
Function name: CalcAdjVal

7.3.4.4. Trimming Setting

The user trimming value is stored in the User trimming value setting register **[TRMOSCSET]**.

7.4. Change of Setting

7.4.1. Reference Signal Frequency

When the reference signal frequency is changed, the following should be modified in "IOSAdjustment.c".

- Target value of Low level width
#define CAPTUREVAL10MHZ (10416)

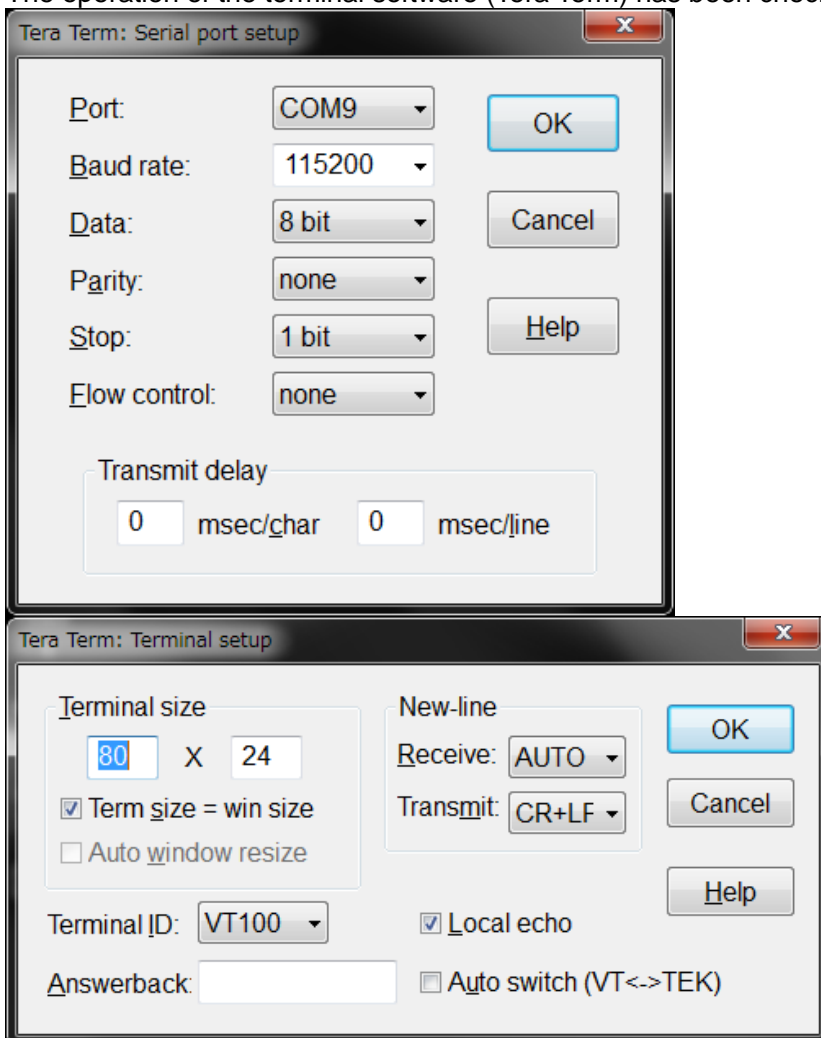
7.5. Output Example of Terminal Software

An output example of the terminal software is shown as follows;

```
-----  
| TRMOSC_demo |  
-----  
please wait...  
-----  
| start |  
-----  
TRMOSC_RUN  
<TRIMSETC>:0  
<TRIMSETF>:B  
TRMOSC_RUN  
<TRIMSETC>:0  
<TRIMSETF>:A  
TRMOSC_DONE  
<TRIMSETC>:0  
<TRIMSETF>:A
```

7.5.1. Setting Example of Terminal Software

The operation of the terminal software (Tera Term) has been checked with the following settings.



8. Points to Remember on Handling of Sample Programs

When using the sample program with other than “Operation Confirmation Condition” please check the operation sufficiently.

9. Revision History

| Revision | Date | Description |
|----------|------------|---------------|
| 1.0 | 2019-10-21 | First release |

RESTRICTIONS ON PRODUCT USE

Toshiba Corporation and its subsidiaries and affiliates are collectively referred to as "TOSHIBA". Hardware, software and systems described in this document are collectively referred to as "Product".

- TOSHIBA reserves the right to make changes to the information in this document and related Product without notice.
- This document and any information herein may not be reproduced without prior written permission from TOSHIBA. Even with TOSHIBA's written permission, reproduction is permissible only if reproduction is without alteration/omission.
- Though TOSHIBA works continually to improve Product's quality and reliability, Product can malfunction or fail. Customers are responsible for complying with safety standards and for providing adequate designs and safeguards for their hardware, software and systems which minimize risk and avoid situations in which a malfunction or failure of Product could cause loss of human life, bodily injury or damage to property, including data loss or corruption. Before customers use the Product, create designs including the Product, or incorporate the Product into their own applications, customers must also refer to and comply with (a) the latest versions of all relevant TOSHIBA information, including without limitation, this document, the specifications, the data sheets and application notes for Product and the precautions and conditions set forth in the "TOSHIBA Semiconductor Reliability Handbook" and (b) the instructions for the application with which the Product will be used with or for. Customers are solely responsible for all aspects of their own product design or applications, including but not limited to (a) determining the appropriateness of the use of this Product in such design or applications; (b) evaluating and determining the applicability of any information contained in this document, or in charts, diagrams, programs, algorithms, sample application circuits, or any other referenced documents; and (c) validating all operating parameters for such designs and applications. **TOSHIBA ASSUMES NO LIABILITY FOR CUSTOMERS' PRODUCT DESIGN OR APPLICATIONS.**
- **PRODUCT IS NEITHER INTENDED NOR WARRANTED FOR USE IN EQUIPMENTS OR SYSTEMS THAT REQUIRE EXTRAORDINARILY HIGH LEVELS OF QUALITY AND/OR RELIABILITY, AND/OR A MALFUNCTION OR FAILURE OF WHICH MAY CAUSE LOSS OF HUMAN LIFE, BODILY INJURY, SERIOUS PROPERTY DAMAGE AND/OR SERIOUS PUBLIC IMPACT ("UNINTENDED USE").** Except for specific applications as expressly stated in this document, Unintended Use includes, without limitation, equipment used in nuclear facilities, equipment used in the aerospace industry, lifesaving and/or life supporting medical equipment, equipment used for automobiles, trains, ships and other transportation, traffic signaling equipment, equipment used to control combustions or explosions, safety devices, elevators and escalators, and devices related to power plant. **IF YOU USE PRODUCT FOR UNINTENDED USE, TOSHIBA ASSUMES NO LIABILITY FOR PRODUCT.** For details, please contact your TOSHIBA sales representative or contact us via our website.
- Do not disassemble, analyze, reverse-engineer, alter, modify, translate or copy Product, whether in whole or in part.
- Product shall not be used for or incorporated into any products or systems whose manufacture, use, or sale is prohibited under any applicable laws or regulations.
- The information contained herein is presented only as guidance for Product use. No responsibility is assumed by TOSHIBA for any infringement of patents or any other intellectual property rights of third parties that may result from the use of Product. No license to any intellectual property right is granted by this document, whether express or implied, by estoppel or otherwise.
- **ABSENT A WRITTEN SIGNED AGREEMENT, EXCEPT AS PROVIDED IN THE RELEVANT TERMS AND CONDITIONS OF SALE FOR PRODUCT, AND TO THE MAXIMUM EXTENT ALLOWABLE BY LAW, TOSHIBA (1) ASSUMES NO LIABILITY WHATSOEVER, INCLUDING WITHOUT LIMITATION, INDIRECT, CONSEQUENTIAL, SPECIAL, OR INCIDENTAL DAMAGES OR LOSS, INCLUDING WITHOUT LIMITATION, LOSS OF PROFITS, LOSS OF OPPORTUNITIES, BUSINESS INTERRUPTION AND LOSS OF DATA, AND (2) DISCLAIMS ANY AND ALL EXPRESS OR IMPLIED WARRANTIES AND CONDITIONS RELATED TO SALE, USE OF PRODUCT, OR INFORMATION, INCLUDING WARRANTIES OR CONDITIONS OF MERCHANTABILITY, FITNESS FOR A PARTICULAR PURPOSE, ACCURACY OF INFORMATION, OR NONINFRINGEMENT.**
- Do not use or otherwise make available Product or related software or technology for any military purposes, including without limitation, for the design, development, use, stockpiling or manufacturing of nuclear, chemical, or biological weapons or missile technology products (mass destruction weapons). Product and related software and technology may be controlled under the applicable export laws and regulations including, without limitation, the Japanese Foreign Exchange and Foreign Trade Law and the U.S. Export Administration Regulations. Export and re-export of Product or related software or technology are strictly prohibited except in compliance with all applicable export laws and regulations.
- Please contact your TOSHIBA sales representative for details as to environmental matters such as the RoHS compatibility of Product. Please use Product in compliance with all applicable laws and regulations that regulate the inclusion or use of controlled substances, including without limitation, the EU RoHS Directive. **TOSHIBA ASSUMES NO LIABILITY FOR DAMAGES OR LOSSES OCCURRING AS A RESULT OF NONCOMPLIANCE WITH APPLICABLE LAWS AND REGULATIONS.**